

Customer Information Sheet

DRAWING No.: M80-666XXX

SHEET 2 OF 2

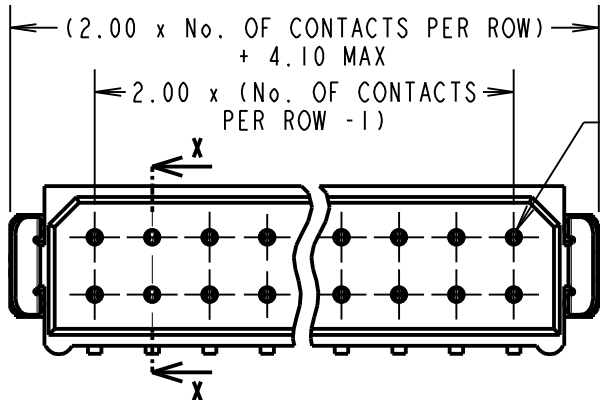
IF IN DOUBT - ASK

©

NOT TO SCALE

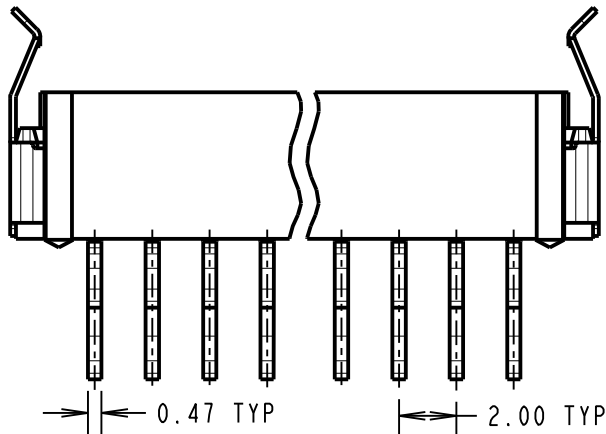
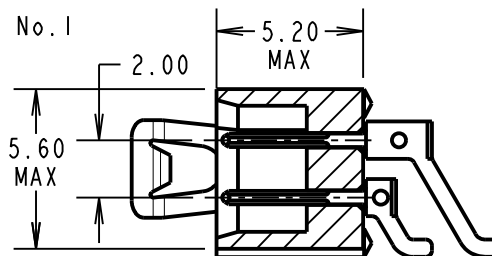
THIRD ANGLE PROJECTION

ALL DIMENSIONS IN mm

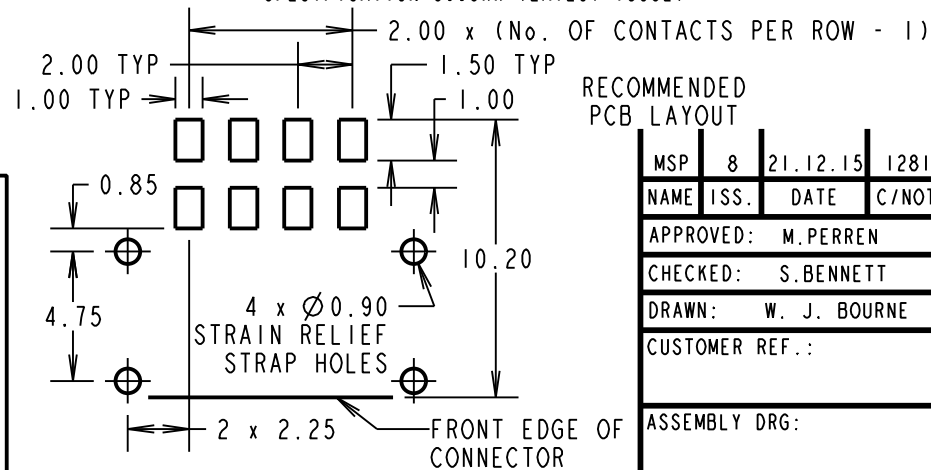
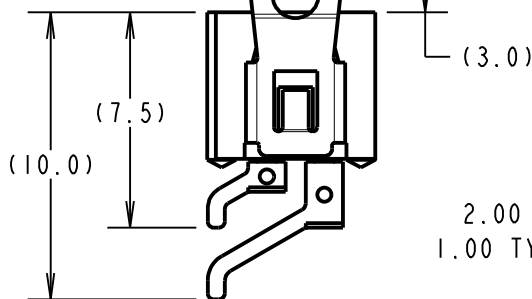


CONTACT No. 1

SECTION X-X



0.36 MAX



RECOMMENDED PCB LAYOUT

SPECIFICATIONS:

MATERIAL:

MOULDING = GLASS-FILLED PPS, UL94V-0, BLACK
CONTACT = BRASS
LATCH = BERYLLIUM COPPER

FINISH:

CONTACT:

22 = 0.75µ GOLD ON CONTACT AREA,
3µm 90/10 TIN/LEAD ON TAILS
42 = 0.75µ GOLD ON CONTACT AREA,
3µm 100% TIN ON TAILS
45 = 0.75µ GOLD OVER NICKEL
LATCH = 1.25µ NICKEL

ELECTRICAL:

CURRENT RATING AT 25°C = 3.0A MAX
CURRENT RATING AT 85°C = 2.2A MAX
WORKING VOLTAGE = 800V AC/DC
VOLTAGE PROOF = 1200V AC/DC
CONTACT RESISTANCE = 25mΩ MAX
INSULATION RESISTANCE = 100MΩ MIN

MECHANICAL:

DURABILITY = 500 OPERATIONS

ENVIRONMENTAL:

TEMPERATURE RANGE = -55°C TO +125°C

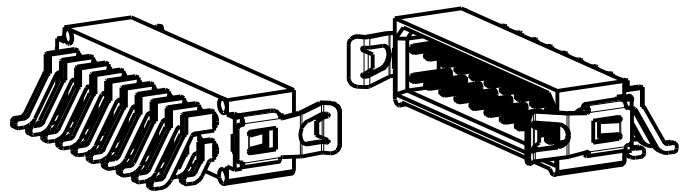
PACKING:

TUBE, 2-OFF STRAIN RELIEF STRAPS PER CONNECTOR IN BAG
FOR COMPLETE SPECIFICATION, SEE COMPONENT SPECIFICATION C005XX (LATEST ISSUE)

ORDER CODE:
M80-666XXX

No. OF CONTACTS
04, 06, 08, 10, 12, 14,
16, 18, 20, 26, 34

FINISH
22 - GOLD, 90/10 TIN/LEAD
42 - GOLD, 100% TIN
45 - ALL OVER GOLD



HARWIN

www.harwin.com
technical@harwin.com

THIS DRAWING AND ANY INFORMATION OR DESCRIPTIVE MATTER SET OUT HEREON ARE CONFIDENTIAL AND COPYRIGHT PROPERTY OF THE HARWIN GROUP AND MUST NOT BE DISCLOSED, LOANED, COPIED OR USED FOR MANUFACTURING, TENDERING OR FOR ANY OTHER PURPOSE WITHOUT THEIR WRITTEN PERMISSION.

TOLERANCES
X. = ±1mm
X.X = ±0.50mm
X.XX = ±0.10mm
X.XXX = ±0.01mm
ANGLES = ±5°
UNLESS STATED

MATERIAL:
SEE ABOVE
FINISH: SEE ABOVE
S/AREA: mm²

TITLE: DATAMATE L-TEK
MALE DIL HORIZONTAL SMT
ASSEMBLY (LATCHED)
DRAWING NUMBER:
M80-666XXX

MSP	8	21.12.15	12814
NAME	ISS.	DATE	C/NOTE
APPROVED: M.PERREN			
CHECKED: S.BENNETT			
DRAWN: W. J. BOURNE			
CUSTOMER REF.:			
ASSEMBLY DRG:			

Mouser Electronics

Authorized Distributor

Click to View Pricing, Inventory, Delivery & Lifecycle Information:

[Harwin:](#)

[M80-6660422](#) [M80-6660442](#) [M80-6660622](#) [M80-6660642](#) [M80-6660822](#) [M80-6660842](#) [M80-6661022](#) [M80-6661042](#) [M80-6661222](#) [M80-6661242](#) [M80-6662022](#) [M80-6662042](#) [M80-6662622](#) [M80-6662642](#) [M80-6663422](#) [M80-6663442](#) [M80-6661422](#) [M80-6661442](#) [M80-6661622](#) [M80-6661642](#) [M80-6661822](#) [M80-6661842](#) [M80-6664422](#) [M80-6664442](#)