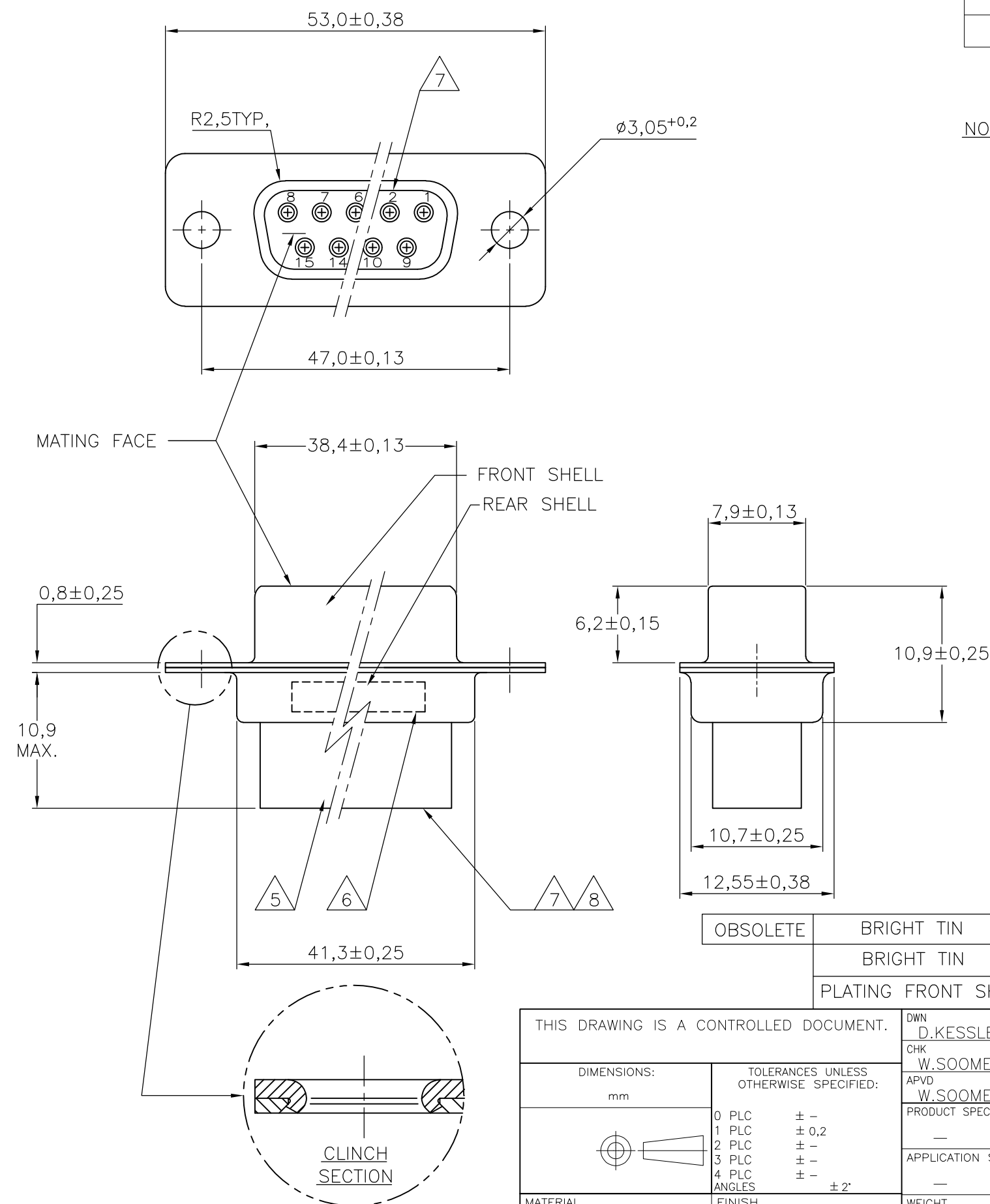


THIS DRAWING IS UNPUBLISHED. RELEASED FOR PUBLICATION

© COPYRIGHT BY TYCO ELECTRONICS CORPORATION. ALL RIGHTS RESERVED.

LOC	DIST	REVISIONS					
		P	LTR	DESCRIPTION	DATE	DWN	APVD
H	—		L	ECR-07-008767	16-07-07	BSV	KMA
			N	ECR-09-004273	02-03-09	AEG	KMA
			N1	ECR-10-020025	13JAN11	RK	KMA



NOTES:

- 1 THIS RECEPTACLE ACCEPTS SIZE 20 REC. CONTACTS.
  - 2 MAXIMUM WIRE INSULATION RECOMMENDED FOR USE WITH THIS RECEPTACLE IS 1,73 DIA. MAX..
  - 3 RETENTION TINES ARE AN INTEGRAL PART OF INSERT.
  - 4 FOLLOWING INSERTION/REMOVAL TOOLS ARE RECOMMENDED FOR USE WITH THESE CONNECTORS:  
 32-28AWG/28-24AWG CONTACTS  
 91067-3 INSERTION/REMOVAL  
 726363-1 INSERTION ONLY  
 24-20AWG CONTACTS  
 726363-1 INSERTION ONLY  
 726364-1 REMOVAL ONLY
- 5 INSERTS: GLASSFILLED SELF-EXTINGUISHING PBT, COLOR BLACK.
- 6 TE, PARTNUMBER AND DATE CODE; INK STAMPED.
- 7 RAISED CAVITY IDENTIFICATION 0,8 HIGH.
- 8 RAISED CAVITY IDENTIFICATION NUMBERS ON WIRE SIDE ARE WHITENED FOR 164533-9.

OBSOLETE	BRIGHT TIN	BRIGHT TIN	STEEL	164533-9	8
	BRIGHT TIN	BRIGHT TIN	STEEL	164533-4	
	PLATING FRONT SHELL	PLATING REAR SHELL	MATERIAL SHELLS	PARTNUMBER	

THIS DRAWING IS A CONTROLLED DOCUMENT.		DWN	11FEB99		Tyco Electronics Corporation 's-Hertogenbosch, Nederland
DIMENSIONS: mm		CHK	-		
TOLERANCES UNLESS OTHERWISE SPECIFIED:		APVD	-		
0 PLC ± - 1 PLC ± 0,2 2 PLC ± - 3 PLC ± - 4 PLC ± - ANGLES ± 2°		PRODUCT SPEC	-		
MATERIAL		FINISH	-		NAME 25 POS HDP-20 RECEPTACLE CONNECTOR SIZE 3
		WEIGHT	-		SIZE A3 CAGE CODE - DRAWING NO C- 164533 RESTRICTED TO -
CUSTOMER DRAWING			SCALE	NTS	SHEET 1 OF 1 REV N1