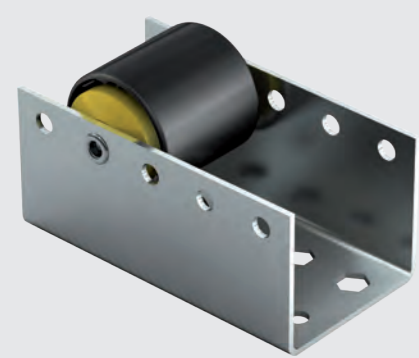


**Push conveyor tracks and diverter equipment
for medium-heavy and heavy pallets**

ROLLER TRACKS BU50



Product Description

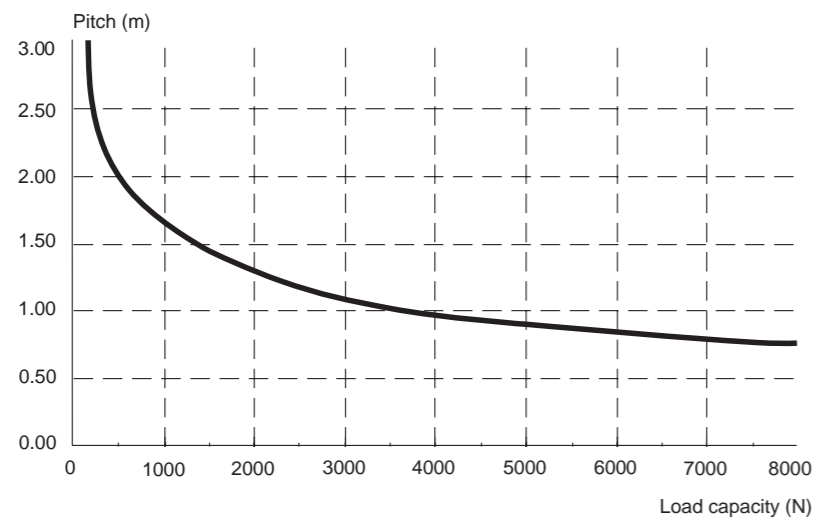
- For universal use
- Different pitches are possible
- Suitable for medium-heavy and heavy materials to be conveyed
- For inclined conveyors and pushing operations
- Side guides
- Zinc-plated steel profile
- Rollers riveted in the profile, rivet shafts 8 mm
- Platform 1700 conveyor rollers used:
 - Polymer conveyor rollers (Ø 50 mm) with or without flange; static load capacity 300 N / dynamic load capacity: 400 N
 - Conveyor rollers with steel tube (Ø 50 mm): static load capacity: 1,200 N / dynamic load capacity: 1,600 N

Technical Data

General technical data

Material	Steel, zinc-plated
Wall thickness	2,5 mm
Standard pitch	52, 78, 104, 156 mm

Load capacity diagram (surface load-deflection 2 mm)



Reference number

Please contact your Interroll customer consultant.

Version

- Polymer conveyor roller without flange
- Polymer conveyor roller with flange
- Steel conveyor roller

Dimensions

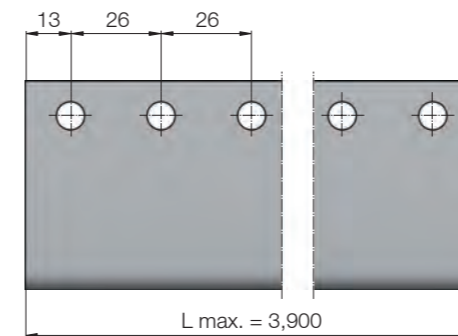


Fig.: Dimensions of Roller Track

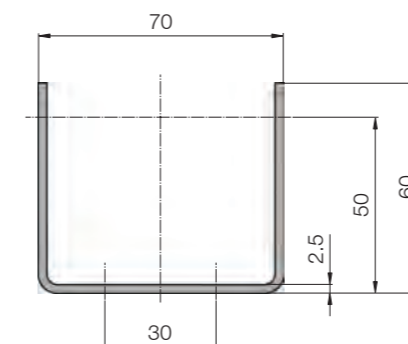
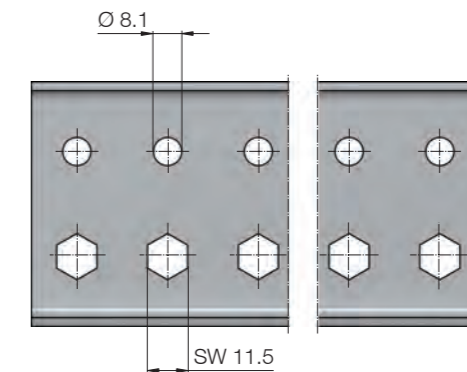


Fig.: Dimensions of steel profile

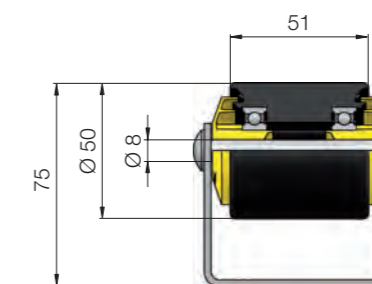


Fig.: Dimensions with polymer conveyor roller without flange

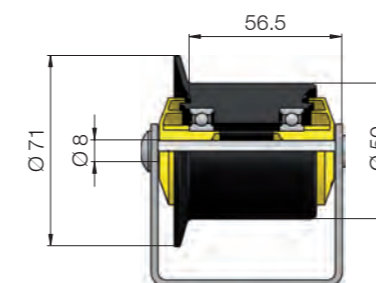


Fig.: Dimensions with polymer conveyor roller with flange

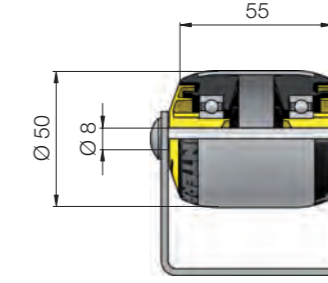


Fig.: Dimensions with steel conveyor roller