

5

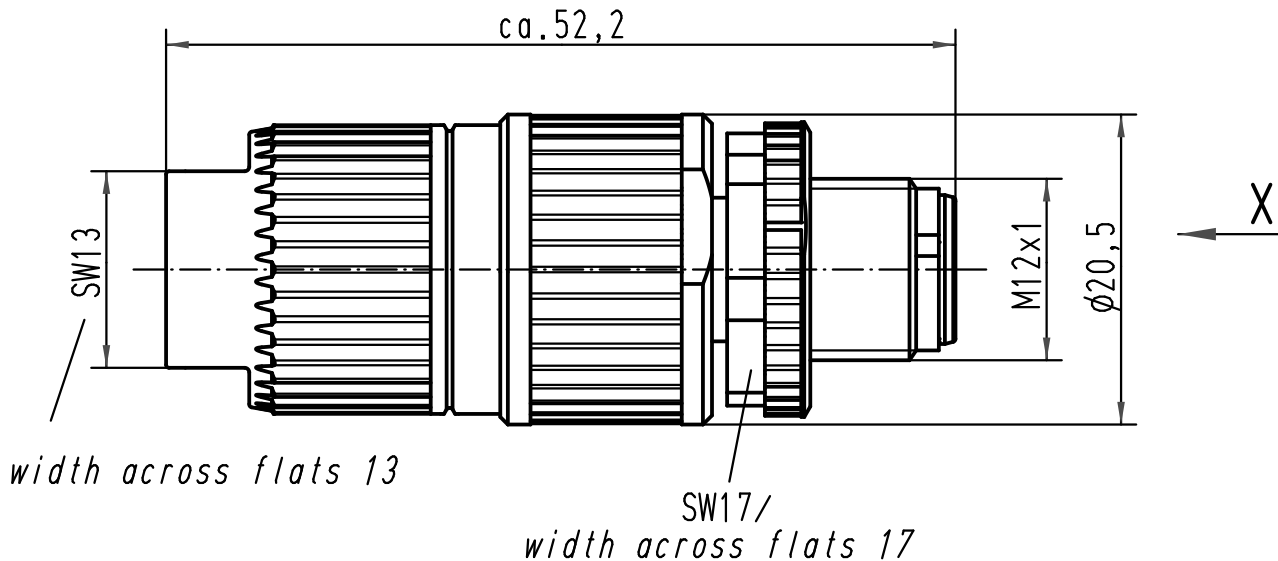
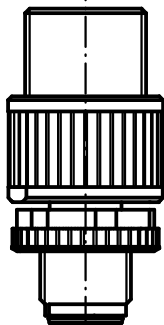
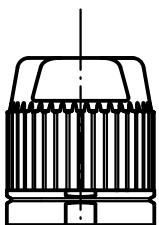
4

3

2

1

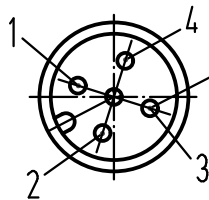
1:1



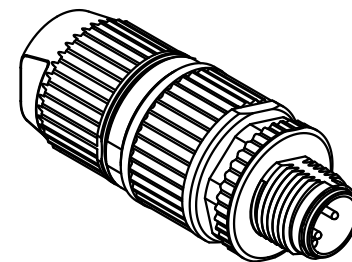
width across flats 13



SW17/
width across flats 17

X



Steckgesicht n.
Contact face acc.
IEC 61076-2-101



 All Dimensions in mm Original Size DIN A 4			Techn. Character.			Nicht tolerierte Masse/ Free size tolerances			
Mod.	Dat.	Name		Dat.	Name	Masstab/ Scale 2:1 1:1	Rundsteckverbinder/ Circular connector M12-L 4polig Stift/ M12-L 4poles male bleifrei/lead free		
412800	19.03.07	DY	Detail.	10.04.02	Pae				
411606	08.08.05	DY	Insp.		Sr				
410925	10.03.04	DY	Stand.						
410180	30.08.02	Pae	HARTING Electric GmbH & Co. KG				TB 21 03 212 1305		
410027			D-32339 Espelkamp					Blatt/ page	
						Sub.			

D

C

B

A