

REFERENCE SPECIFICATIONS

-NFC 93425 (in compliance with HE 501)

PHYSICAL CHARACTERISTICS

-INSULATOR MATERIAL: THERMOPLASTIC UL94V0
 -CONTACT MATERIAL: BRASS
 GOLD OVER NICKEL

-ACCESSORIES: BRASS,cadmium plated yellow passivation
 -SHELLS: STEEL,cadmium plated yellow passivation

ELECTRICAL CHARACTERISTICS

-NOMINAL CURRENT: 7.5A
 -CONTACT RESISTANCE: <= 7.3 m ohms
 -CONTACT/CONTACT : >=1000 V
 -CONTACT/GROUND : >=1200 V
 -INSULATION RESISTANCE: >=5000 MOhms

ENVIRONMENTAL CHARACTERISTICS

- CLIMATIC CATEGORY: 55/125/56
 TEMPERATURE RANGE -55°C TO +125°C
 DAMP HEAT STEADY STATE 56 DAYS
 SALT SPRAY 48 HOURS

MECHANICAL CHARACTERISTICS

- RETENTION AGAINST TORQUE: - Threaded insert: 0.7 N.m minimum
 - Female screw : 0.5 N.m minimum

DBML25P300

Series

Shell size: **E A B C D**
 see sheet 2

Front accessory definition
 see sheet 2

- Blank** :without accessory
- F** :floating mounting
- L** :threaded insert M3
- O** :threaded insert UNC 4-40
- V** :female screw UNC 4-40
- S** :spacer

Contact number (see sheet 2)
9,15,25,37,50

Contacts

P :Pin

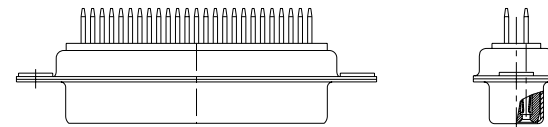
Termination type

3 :Straight version

Plating

00 : 500 matings/unmatings

43 : 500 matings/unmatings for harsh environment



25 WAY for Example

rev	ecn no	dr	date
A	LS06-0174	MPE	2006/11/14
B	LS07-0273	MPE	2007/10/30
-	-	-	-
-	-	-	-
-	-	-	-
-	-	-	-

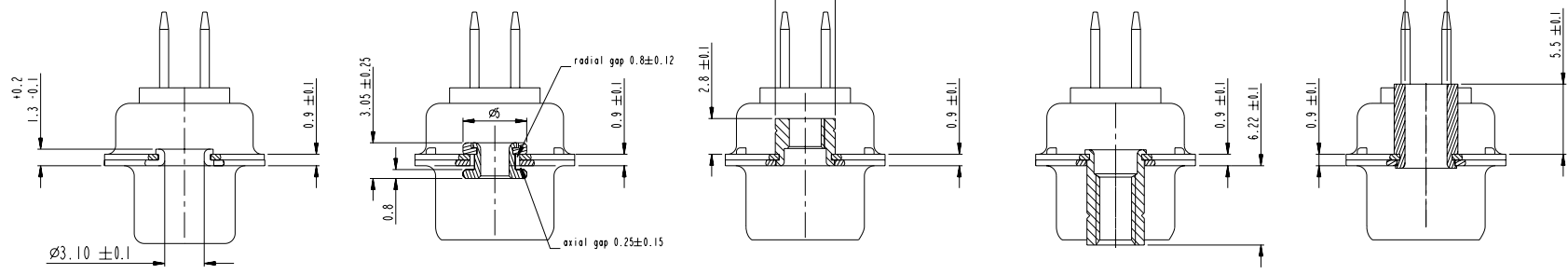
www.fciconnect.com		surface	ISO 1302	tolerance std	ISO 406	ISO 1101	projection	mm
		TOLERANCES UNLESS OTHERWISE SPECIFIED		0.X	±0.3	size	A2	Scale
		ANGULAR	LINEAR	0.xx	±0.1	ECN	LS07-0273	2:1
		0° ±2'		0.xxx	±0.05	Spec.ref		
Dr	M PESSON	2006/11/14	Product family					
Eng	P LEGARE	2006/11/14	SUB MALE DM HE501 series					
Chr	P LEGARE	2006/11/14	with straight solder contact					
Appr	P LEGARE	2006/11/14	cat no	C01-8637-1738				
		catalog no	CUSTOMER		sheet 1 of 4			

Copyright FCI, FCJ

1 2 3 4 5 6 7 8

A
B
C
D
E
F

A
B
C
D
E
F



FRONT ACCESSORY **Blank** without **F** floating mounting **L** insert M3 **O** insert UNC 4.40 **V** female screw UNC 4.40 **S** spacer

PART NUMBER	FRONT ACCESSORY
D*MxxP300	without
D*MFxxP300	floating mounting
D*MLxxP300	insert M3
D*MOxxP300	insert UNC 4.40
D*MVxxP300	female screw UNC 4.40
D*MSxxP300	spacer

shell size	Contact number
‡	XX
E	09
A	15
B	25
C	37
D	50

PART NUMBER	FRONT ACCESSORY
D*MxxP343	without
D*MFxxP343	floating mounting
D*MLxxP343	insert M3
D*MOxxP343	insert UNC 4.40
D*MVxxP343	female screw UNC 4.40
D*MSxxP343	spacer

CROSS REFERENCES HE501 and FCI

HE501 P/N	FCI P/N	FRONT ACCESSORY
HE501NxxYP4	D*MxxP300	without
HE501FxxYP4	D*MFxxP300	floating mounting

Copyright FCI,

www.fciconnect.com		surface ISO 1302	tolerance std ISO 406 ISO 1101	projection TOLERANCES UNLESS OTHERWISE SPECIFIED	mm
Dr	M PESSON	2006/11/14	ANGULAR	0.X ±0.3	size A2 Scale 2:1
Eng	P LEGARE	2006/11/14	LINEAR	0.XX ±0.1	ECN LS07-0273
Chr	P LEGARE	2006/11/14	0° ±2°	0.XXX ±0.05	Product family - Spec ref
Appr	P LEGARE	2006/11/14			

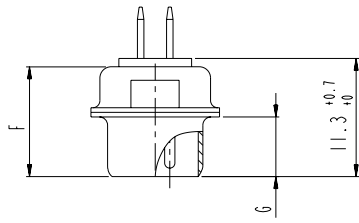
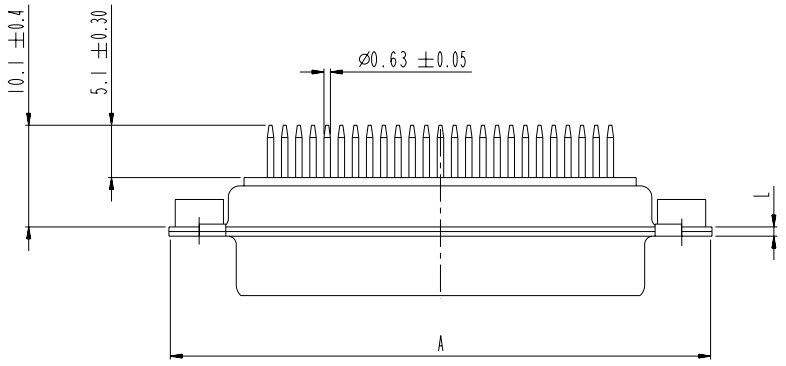
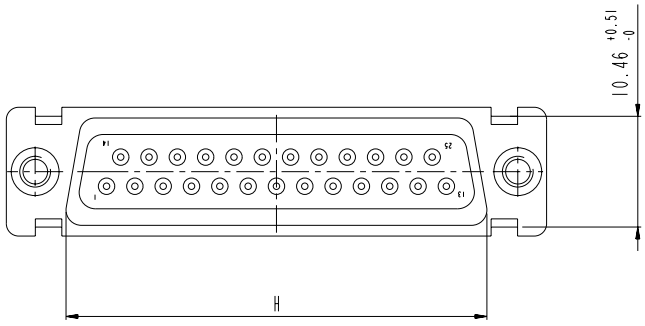
SCALE: 4

	SUB MALE DM HE501 series with straight solder contact	dwg no C01-8637-1738	Rev. B
catalog no	CUSTOMER	sheet 2 of 4	

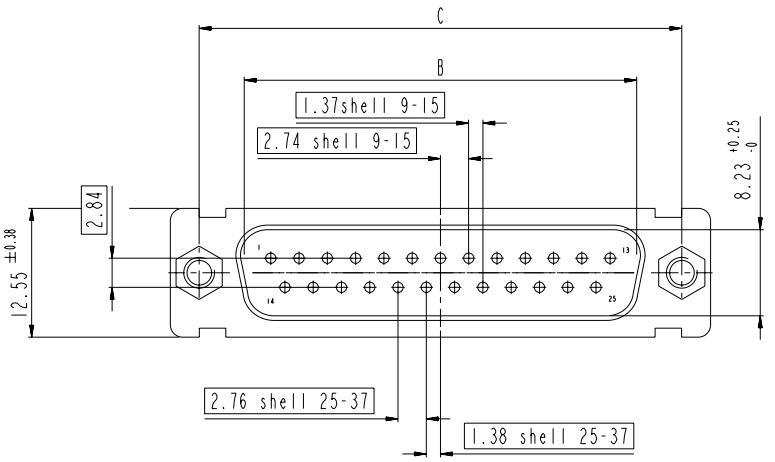
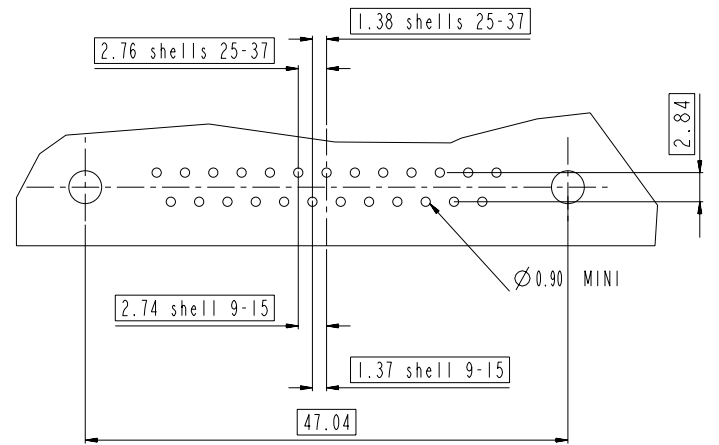
DIMENSIONS FOR SHELL E,A,B,C

Dimensions are in millimeters

Shell size	Number of contacts	A ^{+0.76} ₋₀	B ^{+0.25} ₋₀	C ±0.12	F ^{+0.57} ₋₀	G ^{+0.25} ₋₀	H ^{+0.51} ₋₀	L ^{+0.22} ₋₀
E	09	30.43	16.79	24.99	10.47	5.9 ^{+0.15} ₋₀	19.02	0.80
A	15	38.76	25.12	33.32	10.47	5.9 ^{+0.15} ₋₀	27.25	0.80
B	25	52.65	38.84	47.04	10.43	5.7 ^{+0.25} ₋₀	41.02	0.80
C	37	68.94	55.30	63.50	10.56	5.7 ^{+0.25} ₋₀	57.45	0.90

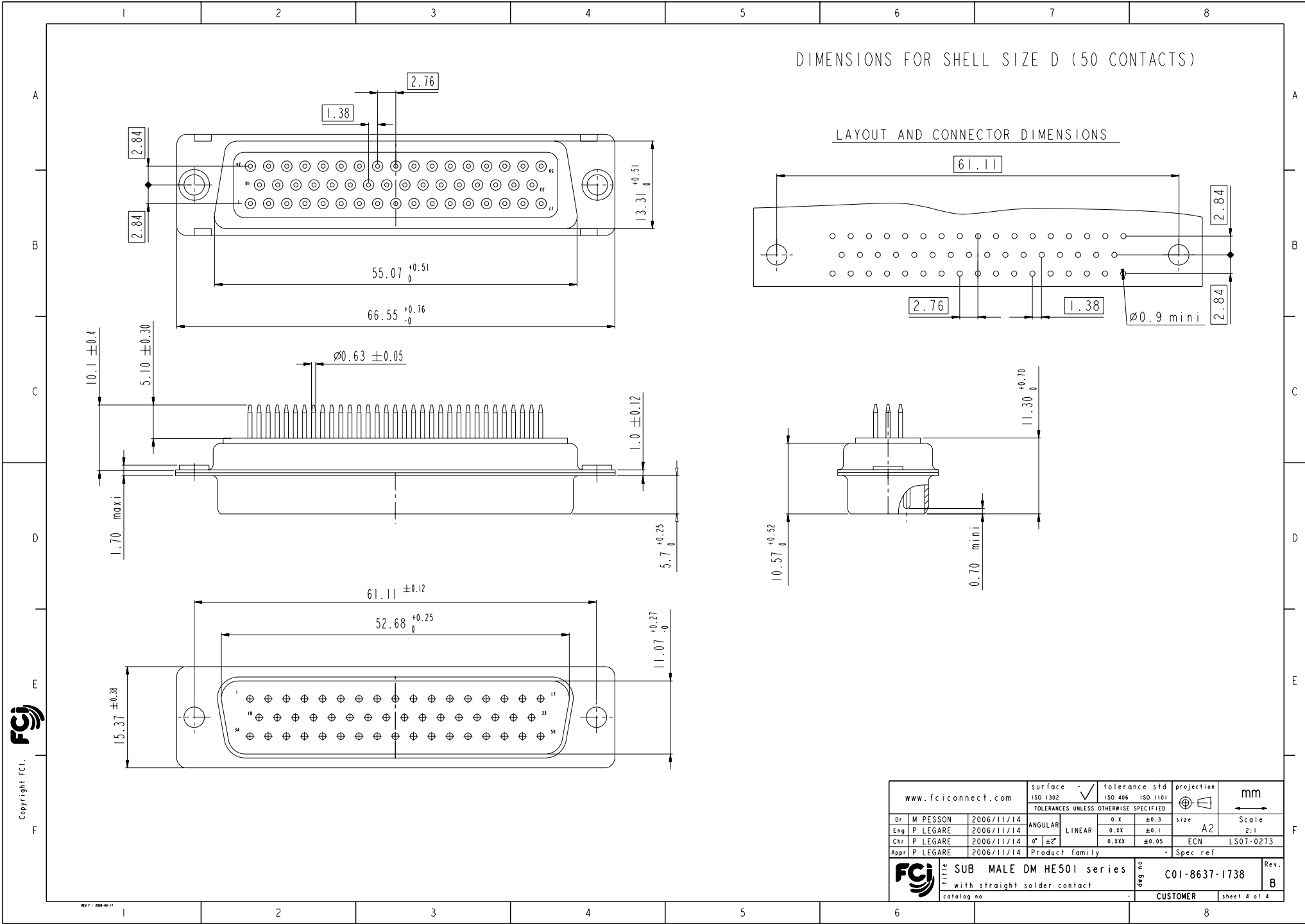


LAYOUT AND CONNECTOR DIMENSIONS



Copyright FCI. **FCI**

www.fciconnect.com		surface -	tolerance std ISO 1302 ✓	ISO 406	ISO 1101	projection	mm
		TOLERANCES UNLESS OTHERWISE SPECIFIED				⊕	
Dr	M PESSON	2006/11/14	ANGULAR	0.X	±0.3	size	A2
Eng	P LEGARE	2006/11/14	LINEAR	0.XX	±0.1	Scale	2:1
Chr	P LEGARE	2006/11/14	0° ±2°	0.XXX	±0.05	ECN	LS07-0273
Appr	P LEGARE	2006/11/14	Product family			Spec ref	
FCI		SUB MALE DM HE501 series		ang no	C01-8637-1738		Rev. B
		with straight solder contact		catalog no	CUSTOMER		sheet 3 of 4



Copyright FCI. **FCI**

www.fciconnect.com		surface ISO 1302	tolerance std ISO 406 ISO 1101	projection	mm
		TOLERANCES UNLESS OTHERWISE SPECIFIED			
Dr	M PESSON	2006/11/14	ANGULAR	0.X ± 0.3	size A2 Scale 2:1
Eng	P LEGARE	2006/11/14	LINEAR	0.XX ± 0.1	
Chr	P LEGARE	2006/11/14	∅ ± 2	0.XXX ± 0.05	ECN LS07-0273
Appr	P LEGARE	2006/11/14	Product family	-	Spec ref
FCI SUB MALE DM HE501 series		title	with straight solder contact	ang no	C01-8637-1738
catalog no		CUSTOMER		Rev.	B
				sheet 4 of 4	

Mouser Electronics

Authorized Distributor

Click to View Pricing, Inventory, Delivery & Lifecycle Information:

[FCI / Amphenol:](#)

[DAM15P300](#) [DAM15P343](#) [DAMF15P300](#) [DAMS15P300](#) [DBM25P343](#) [DBMV25P300](#) [DCM37P343](#) [DDM50P343](#)
[DDMF50P300](#) [DDML50P300](#) [DEM09P343](#) [DEMS09P300](#) [DEMV09P300](#) [DAML15P300](#) [DBM25P300](#) [DBMS25P300](#)
[DCM37P300](#) [DCML37P300](#) [DCMS37P300](#) [DDM50P300](#) [DDMS50P300](#) [DEM09P300](#) [DCMV37P300](#)
[DAMO15P300](#)