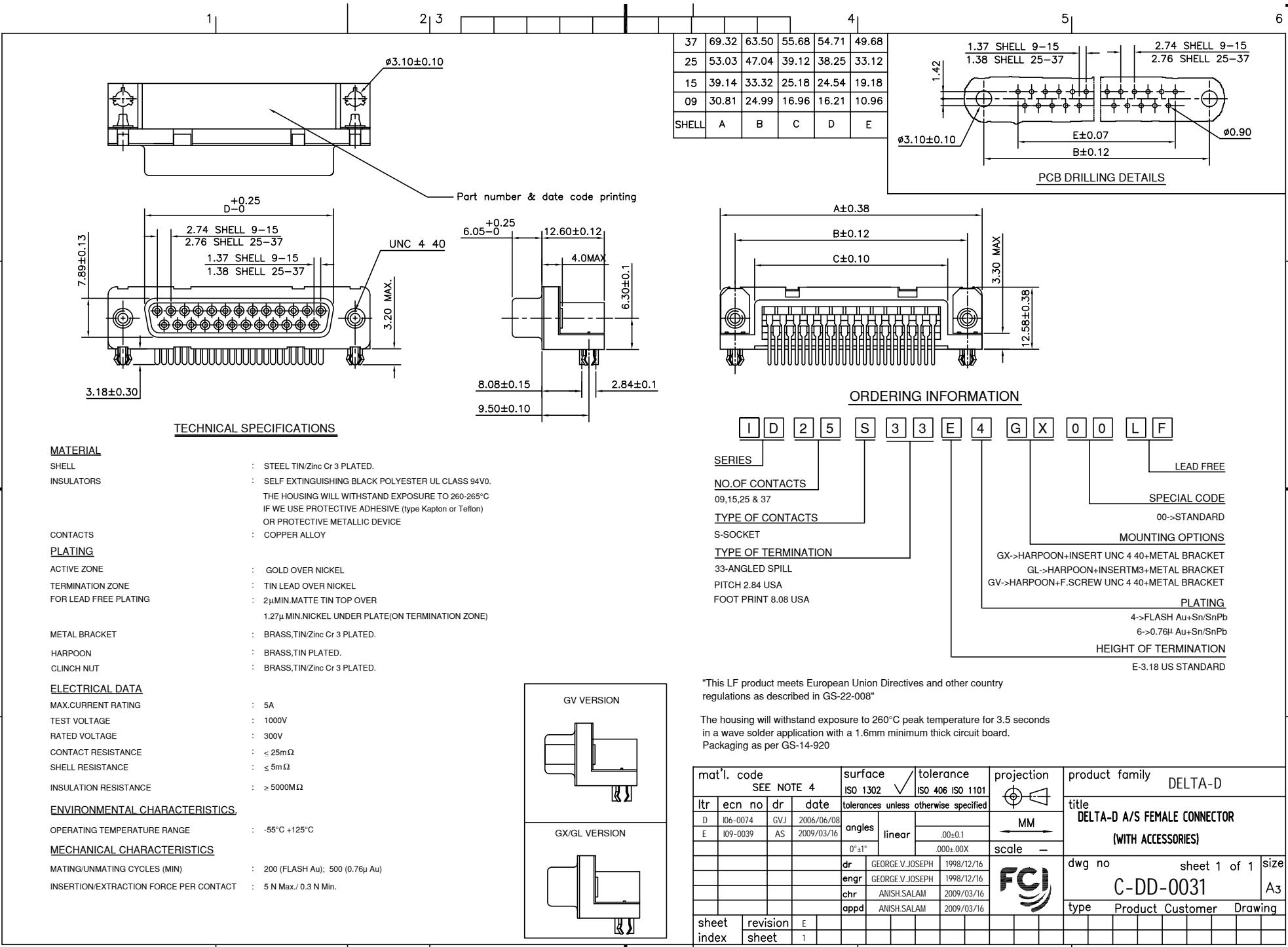




FCIconnect.com

Copyright FCI



TECHNICAL SPECIFICATIONS

- MATERIAL**
 - SHELL : STEEL TIN/Zinc Cr 3 PLATED.
 - INSULATORS : SELF EXTINGUISHING BLACK POLYESTER UL CLASS 94V0. THE HOUSING WILL WITHSTAND EXPOSURE TO 260-265°C IF WE USE PROTECTIVE ADHESIVE (Type Kapton or Teflon) OR PROTECTIVE METALLIC DEVICE
 - CONTACTS : COPPER ALLOY
- PLATING**
 - ACTIVE ZONE : GOLD OVER NICKEL
 - TERMINATION ZONE : TIN LEAD OVER NICKEL
 - FOR LEAD FREE PLATING : 2µMIN.MATTE TIN TOP OVER 1.27µ MIN.NICKEL UNDER PLATE(ON TERMINATION ZONE)
- METAL BRACKET** : BRASS,TIN/Zinc Cr 3 PLATED.
- HARPOON** : BRASS,TIN PLATED.
- CLINCH NUT** : BRASS,TIN/Zinc Cr 3 PLATED.

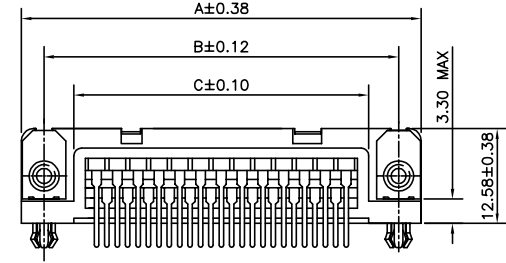
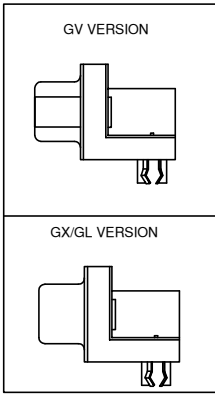
- ELECTRICAL DATA**
 - MAX.CURRENT RATING : 5A
 - TEST VOLTAGE : 1000V
 - RATED VOLTAGE : 300V
 - CONTACT RESISTANCE : ≤ 25mΩ
 - SHELL RESISTANCE : ≤ 5mΩ
 - INSULATION RESISTANCE : ≥ 5000MΩ

ENVIRONMENTAL CHARACTERISTICS.

- OPERATING TEMPERATURE RANGE : -55°C +125°C

MECHANICAL CHARACTERISTICS

- MATING/UNMATING CYCLES (MIN) : 200 (FLASH Au); 500 (0.76µ Au)
- INSERTION/EXTRACTION FORCE PER CONTACT : 5 N Max./ 0.3 N Min.



ORDERING INFORMATION

Series: I D 2 5 S 3 3 E 4 G X 0 0 L F

- SERIES**: ID25S33E4GX00LF
- NO.OF CONTACTS**: 09,15,25 & 37
- TYPE OF CONTACTS**: S-SOCKET
- TYPE OF TERMINATION**: 33-ANGLED SPILL
- PITCH**: 2.84 USA
- FOOT PRINT**: 8.08 USA
- LEAD FREE**
- SPECIAL CODE**: 00->STANDARD
- MOUNTING OPTIONS**:
 - GX->HARPOON+INSERT UNC 4 40+METAL BRACKET
 - GL->HARPOON+INSERTM3+METAL BRACKET
 - GV->HARPOON+F.SCREW UNC 4 40+METAL BRACKET
- PLATING**:
 - 4->FLASH Au+Sn/SnPb
 - 6->0.76µ Au+Sn/SnPb
- HEIGHT OF TERMINATION**: E-3.18 US STANDARD

"This LF product meets European Union Directives and other country regulations as described in GS-22-008"

The housing will withstand exposure to 260°C peak temperature for 3.5 seconds in a wave solder application with a 1.6mm minimum thick circuit board. Packaging as per GS-14-920

mat'l. code		surface		tolerance		projection		product family	
SEE NOTE 4		ISO 1302		ISO 406 ISO 1101				DELTA-D	
ltr	ecn no	dr	date	tolerances unless otherwise specified		MM		title	
D	106-0074	GVJ	2006/06/08	angles	linear	.00±0.1		DELTA-D A/S FEMALE CONNECTOR	
E	109-0039	AS	2009/03/16	0°±1°		.000±.00X		(WITH ACCESSORIES)	
		dr	GEORGE.V.JOSEPH	1998/12/16		scale		dwg no	
		enrg	GEORGE.V.JOSEPH	1998/12/16		-		sheet 1 of 1	
		chr	ANISH.SALAM	2009/03/16		-		size	
		appd	ANISH.SALAM	2009/03/16		-		A3	
sheet index		revision sheet	E					type	
		1						Product Customer Drawing	

Mouser Electronics

Authorized Distributor

Click to View Pricing, Inventory, Delivery & Lifecycle Information:

[FCI / Amphenol:](#)

[ID09S33E6GX00LF](#) [ID15S33E6GX00LF](#) [ID25S33E4GX00LF](#)