

PRODUCT NUMBER
SEE TABLE-SHEET1-1

NOTES:

1. MATERIAL:
HOUSING: LCP, UL 94V-0 RATED
CONTACT: COPPER ALLOY

PLATING CONTACT: SEE TABLE ON SHEET 1
SOLDER BALL: SEE TABLE ON SHEET 1
EUTECTIC SnPb OR LEAD FREE
95.5 Sn/4 Ag/0.5 Cu

2. OVERALL BOARD-TO-BOARD STACK HEIGHTS
AVAILABLE USING THIS CONNECTOR (84578):

MATED HT.	WITH RECEPT. P/N	-2XX PLATING
10.0	84501	SEE NOTE 3 & 4
11.5	84502	*
14.0	84553	SEE NOTE 3 & 4

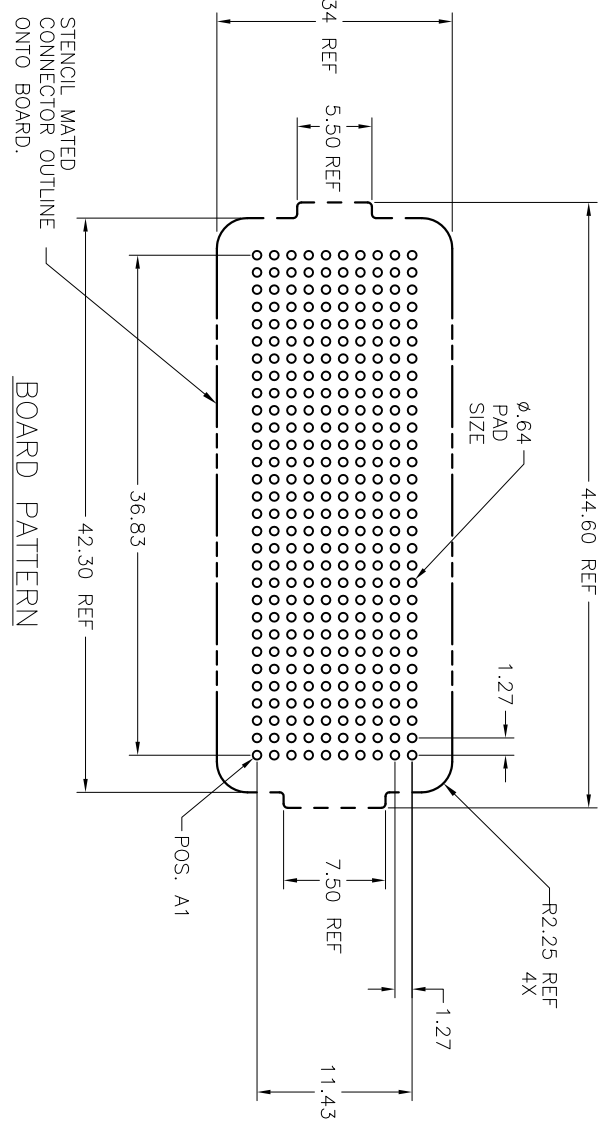
* 84502 NOT AVAILABLE IN TELCORDIA/NORTEL VERSION.

3. PLATING FOR INDICATED -2XX SERIES
PRODUCT NUMBERS MEET THE REQUIREMENTS OF
GR-1217-CORE, CENTRAL
OFFICE ENVIRONMENT, (25 YEAR LIFE EXPECTANCY).

4. PLATING FOR INDICATED -2XX SERIES PRODUCT
NUMBER IS 50μ INCH MIN. Au OVER 100μ INCH MIN. Ni
WITH SPECIAL CONTACT GEOMETRY TO
MEET REQUIREMENTS OF TELCORDIA GR-1217-CORE;
CENTRAL OFFICE ENVIRONMENT.

5. FOR PROPER APPLICATION FOLLOW FCI APPLICATION
SPECIFICATION GS-20-033. LEAD FREE SOLDER
BALLS WILL NOT SOLDER PROPERLY IN A LEADED
SOLDER PROCESS DUE TO A HIGHER REFLOW TEMPERATURE
LEAD FREE PRODUCT IS THEREFORE NOT BACKWARDS
COMPATIBLE WITH LEADED OR SOME SOLDERING
APPLICATIONS. REFERENCE FCI APPLICATION SPECIFICATION.

6. THIS PRODUCT MEETS EUROPEAN UNION DIRECTIVE AND OTHER
COUNTRY REGULATIONS AS DESCRIBED IN GS-47-0004.
PRODUCT MEETING THIS DIRECTIVE IS IDENTIFIED IN THE
LOT CODE NUMBER MARKED ON EACH PART BY HAVING AN "X"
IN THE SEVENTH CHARACTER POSITION.



7. 84578-A02 AND -A02LF ARE CUSTOMER SPECIALS.

9. Δ SYMBOL WILL BE NEXT TO ANY DIMENSION, NEW VIEW OR
NOTE WHICH HAS BEEN MODIFIED WITH THE CURRENT
DRAWING REVISION.

10. 84578-093LF HAS A SPECIAL CAP

mat'l. code	SEE NOTE 1	surface	tolerance	projection	product family
lfr	ecm no.	date	ASME Y14.5	ASME Y14.5	MEG-ARRAY
			tolerances unless otherwise specified		
L		angles	Xx3	MM	title
		0° ±2°	XXX.051	Scale: 2:1	6mm PLUG ASSEMBLY
		dr	D. WAUGHEN		10 X 30 = 300 POSITION
		ENGR	M. HAHN		84578
		chr	M. HAHN		sheet 2 of 2
		appd	M. HAHN		size
sheet	revision				A4
index	sheet				CUSTOMER Drawing

Mouser Electronics

Authorized Distributor

Click to View Pricing, Inventory, Delivery & Lifecycle Information:

[FCI / Amphenol:](#)

[84578-102](#) [84578-202](#) [84578-002](#) [84578-002LF](#) [84578-102LF](#) [84578-202LF](#) [84578-A02](#) [84578-092LF](#) [84578-292LF](#) [84578-292](#) [84578-192](#) [84578-092](#) [84578-192LF](#)