

FEATURES

- Precision power supply monitoring
- 31 reset threshold options: 1.58 V to 5.0 V
- Four reset timeouts: 1 ms, 20 ms, 140 ms, and 1120 ms
- Manual reset input
- Reset output stage
- Push pull active low
- Guaranteed reset output valid to $V_{CC} = 1\text{ V}$
- Power supply glitch immunity
- Specified over the -40°C to $+125^{\circ}\text{C}$ temperature range
- 4-lead SC70 package

APPLICATIONS

- Microprocessor systems
- Computers
- Controllers
- Intelligent instruments
- Portable equipment

GENERAL DESCRIPTION

The [ADM6384](#) is a supervisory circuit that monitors power supply voltage levels in microprocessor-based systems. A power-on reset signal is generated when the supply voltage rises to a preset threshold level. The debounced manual reset input of the [ADM6384](#) can be used to initiate a reset by means of an external push button or logic signal.

FUNCTIONAL BLOCK DIAGRAMS

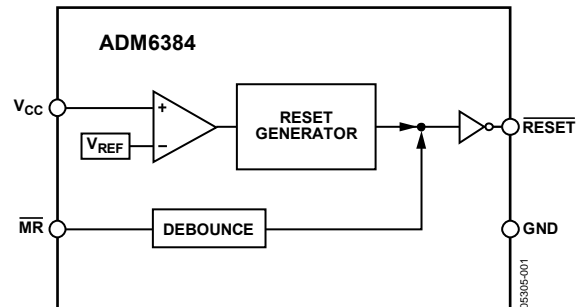


Figure 1.

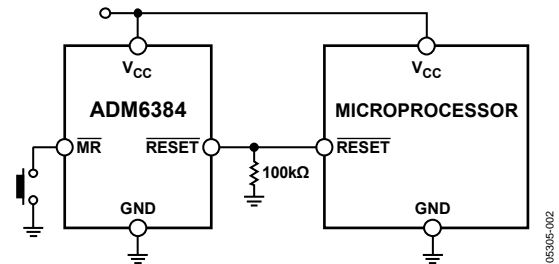


Figure 2.

The device is available in a choice of 31 reset threshold options, from 1.58 V to 5.0 V. The minimum reset timeout periods are 1 ms, 20 ms, 140 ms, and 1120 ms. Not all device options are released for sale as standard models. See Ordering Guide for details.

The [ADM6384](#) is available in a 4-lead SC70 package and typically consumes only $7\ \mu\text{A}$, making it suitable for use in low power, portable applications.

TABLE OF CONTENTS

| | | | |
|--|---|--|----|
| Features | 1 | Typical Performance Characteristics | 7 |
| Applications..... | 1 | Circuit Description..... | 9 |
| Functional Block Diagrams..... | 1 | Reset Output | 9 |
| General Description | 1 | Manual Reset Input | 9 |
| Revision History | 2 | Applications Information | 10 |
| Specifications..... | 3 | Negative Going V_{CC} Transients..... | 10 |
| Absolute Maximum Ratings..... | 5 | Ensuring Reset Valid to $V_{CC} = 0 V$ | 10 |
| ESD Caution..... | 5 | Outline Dimensions | 11 |
| Pin Configuration and Function Descriptions..... | 6 | Ordering Guide | 11 |

REVISION HISTORY

4/2018—Rev. D to Rev. E

| | |
|---|----|
| Changes to General Description Section | 1 |
| Added Note 2, Table 1; Renumbered Sequentially..... | 3 |
| Changes to Ordering Guide | 11 |

6/2016—Rev. C to Rev. D

| | |
|----------------------------------|----|
| Change to Table 3 | 6 |
| Updated Outline Dimensions | 11 |

4/2011—Rev. B to Rev. C

| | |
|----------------------------------|----|
| Updated Outline Dimensions | 11 |
| Changes to Ordering Guide | 11 |

7/2008—Rev. A to Rev. B

| | |
|--|----|
| Changes to Figure 5, Figure 8, and Figure 9..... | 7 |
| Changes to Figure 10..... | 8 |
| Changes to Figure 15..... | 11 |
| Changes to Ordering Guide | 11 |

1/2007—Rev. 0 to Rev. A

| | |
|--------------------------------------|-----------|
| Updated Format..... | Universal |
| Changes to Specifications Table..... | 3 |
| Updated Outline Dimensions | 11 |
| Changes to Ordering Guide | 11 |

7/2005—Revision 0: Initial Version

SPECIFICATIONS

V_{CC} = full operating range, T_A = -40°C to $+125^{\circ}\text{C}$, unless otherwise noted.

Table 1.

| Parameter | Min | Typ | Max | Unit | Test Conditions/Comments |
|---|------|-------------------|------|-------------------------|--|
| SUPPLY | | | | | |
| V_{CC} Operating Voltage Range | 1 | | 5.5 | V | |
| Supply Current | | 7 | 13 | μA | $V_{CC} = 5.5\text{ V}$, no load |
| | | 6 | 11 | μA | $V_{CC} = 3.6\text{ V}$, no load |
| | | 4 | 7 | μA | $V_{CC} = 2.5\text{ V}$, no load ¹ |
| | | 3 | 6 | μA | $V_{CC} = 1.8\text{ V}$, no load ¹ |
| RESET THRESHOLD VOLTAGE ² | | | | | |
| ADM6384x50x | 4.88 | 5.00 | 5.12 | V | |
| ADM6384x49x | 4.78 | 4.90 | 5.02 | V | |
| ADM6384x48x | 4.68 | 4.80 | 4.92 | V | |
| ADM6384x47x | 4.58 | 4.70 | 4.82 | V | |
| ADM6384x46x | 4.51 | 4.63 | 4.74 | V | |
| ADM6384x45x | 4.39 | 4.5 | 4.61 | V | |
| ADM6384x44x | 4.27 | 4.38 | 4.48 | V | |
| ADM6384x43x | 4.19 | 4.30 | 4.41 | V | |
| ADM6384x42x | 4.1 | 4.2 | 4.31 | V | |
| ADM6384x41x | 4.0 | 4.1 | 4.2 | V | |
| ADM6384x40x | 3.9 | 4.0 | 4.1 | V | |
| ADM6384x39x | 3.8 | 3.9 | 4.0 | V | |
| ADM6384x38x | 3.71 | 3.8 | 3.9 | V | |
| ADM6384x37x | 3.61 | 3.7 | 3.79 | V | |
| ADM6384x36x | 3.51 | 3.6 | 3.69 | V | |
| ADM6384x35x | 3.41 | 3.5 | 3.59 | V | |
| ADM6384x34x | 3.32 | 3.4 | 3.49 | V | |
| ADM6384x33x | 3.22 | 3.3 | 3.38 | V | |
| ADM6384x32x | 3.12 | 3.2 | 3.28 | V | |
| ADM6384x31x | 3.00 | 3.08 | 3.15 | V | |
| ADM6384x30x | 2.93 | 3.0 | 3.08 | V | |
| ADM6384x29x | 2.85 | 2.93 | 3.00 | V | |
| ADM6384x28x | 2.73 | 2.8 | 2.87 | V | |
| ADM6384x27x | 2.63 | 2.70 | 2.77 | V | |
| ADM6384x26x | 2.56 | 2.63 | 2.69 | V | |
| ADM6384x25x | 2.44 | 2.5 | 2.56 | V | |
| ADM6384x24x | 2.34 | 2.4 | 2.46 | V | |
| ADM6384x23x | 2.26 | 2.31 | 2.37 | V | |
| ADM6384x22x | 2.13 | 2.19 | 2.24 | V | |
| ADM6384x17x | 1.62 | 1.67 | 1.71 | V | |
| ADM6384x16x | 1.54 | 1.58 | 1.61 | V | |
| RESET THRESHOLD TEMPERATURE COEFFICIENT | | | | | |
| V_{CC} to Reset Delay | | 60 | | ppm/ $^{\circ}\text{C}$ | |
| | | 35 | | μs | V_{CC} falling at 10 mV/ μs from $V_{TH} + 100\text{ mV}$ to $V_{TH} - 100\text{ mV}$ |
| RESET THRESHOLD HYSTERESIS | | | | | |
| | | $2 \times V_{TH}$ | | mV | |
| RESET TIMEOUT PERIOD ² | | | | | |
| ADM6384xxD1 | 1 | | 2 | ms | |
| ADM6384xxD2 | 20 | | 40 | ms | |
| ADM6384xxD3 | 140 | | 280 | ms | |
| ADM6384xxD4 | 1120 | | 2240 | ms | |

| Parameter | Min | Typ | Max | Unit | Test Conditions/Comments |
|---|----------------------------|-----|----------------------------|---------------|--|
| MANUAL RESET INPUT | | | | | |
| $\overline{\text{MR}}$ Input Threshold | | | | | |
| V_{IL} | | | $0.3 \times V_{\text{CC}}$ | V | $V_{\text{CC}} < 4\text{ V}$ |
| | | | 0.8 | V | $V_{\text{CC}} > 4\text{ V}$ |
| V_{IH} | $0.7 \times V_{\text{CC}}$ | | | V | $V_{\text{CC}} < 4\text{ V}$ |
| | 2.4 | | | V | $V_{\text{CC}} > 4\text{ V}$ |
| $\overline{\text{MR}}$ Input Pulse Width | 1 | | | μs | |
| $\overline{\text{MR}}$ Glitch Rejection | | 100 | | ns | |
| $\overline{\text{MR}}$ Pull-Up Resistance | 32 | 63 | 100 | kV | |
| $\overline{\text{MR}}$ to Reset Delay | | 200 | | ns | |
| RESET OUTPUT VOLTAGE | | | | | |
| V_{OL} | | | 0.3 | V | $V_{\text{CC}} \geq 1.0\text{ V}$, $I_{\text{SINK}} = 80\ \mu\text{A}$ |
| | | | 0.3 | V | $V_{\text{CC}} \geq 2.5\text{ V}$, $I_{\text{SINK}} = 1.2\text{ mA}$ |
| | | | 0.4 | V | $V_{\text{CC}} \geq 4.5\text{ V}$, $I_{\text{SINK}} = 3.2\text{ mA}$ |
| V_{OH} | $0.8 \times V_{\text{CC}}$ | | | V | $V_{\text{CC}} \geq 2.5\text{ V}$, $I_{\text{SOURCE}} = 500\ \mu\text{A}$ |
| | $0.8 \times V_{\text{CC}}$ | | | V | $V_{\text{CC}} \geq 4.5\text{ V}$, $I_{\text{SOURCE}} = 800\ \mu\text{A}$ |

¹ $T_{\text{A}} = 25^{\circ}\text{C}$ only.

² Not all devices are released for sale as standard models. See the Ordering Guide for details.

ABSOLUTE MAXIMUM RATINGS

$T_A = 25^\circ\text{C}$, unless otherwise noted.

Table 2.

| Parameter | Rating |
|--|-----------------|
| V_{CC} | -0.3 V to +6 V |
| $\overline{\text{RESET}}$ | -0.3 V to +6 V |
| Output Current ($\overline{\text{RESET}}$) | 20 mA |
| Operating Temperature Range | -40°C to +125°C |
| Storage Temperature Range | -65°C to +150°C |
| θ_{JA} Thermal Impedance, SC70 | 331°C/W |
| Soldering Temperature | |
| Sn/Pb | 240°C, 30 sec |
| Pb-Free | 260°C, 40 sec |

Stresses at or above those listed under Absolute Maximum Ratings may cause permanent damage to the product. This is a stress rating only; functional operation of the product at these or any other conditions above those indicated in the operational section of this specification is not implied. Operation beyond the maximum operating conditions for extended periods may affect product reliability.

ESD CAUTION



ESD (electrostatic discharge) sensitive device.

Charged devices and circuit boards can discharge without detection. Although this product features patented or proprietary protection circuitry, damage may occur on devices subjected to high energy ESD. Therefore, proper ESD precautions should be taken to avoid performance degradation or loss of functionality.

PIN CONFIGURATION AND FUNCTION DESCRIPTIONS

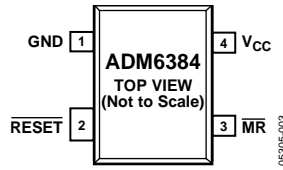


Figure 3. Pin Configuration

Table 3. Pin Function Descriptions

| Pin No. | Mnemonic | Description |
|---------|---------------------------|---|
| 1 | GND | Ground. |
| 2 | $\overline{\text{RESET}}$ | Active Low Reset Output. This is an active low output that is asserted whenever V_{CC} is below the reset threshold (V_{TH}). It features a push pull output stage. |
| 3 | $\overline{\text{MR}}$ | Manual Reset Input. This is an active low input that, when forced low for at least 1 μs , generates a reset. It features a 52 k Ω internal pull-up. |
| 4 | V_{CC} | Power Supply Voltage Being Monitored. |

TYPICAL PERFORMANCE CHARACTERISTICS

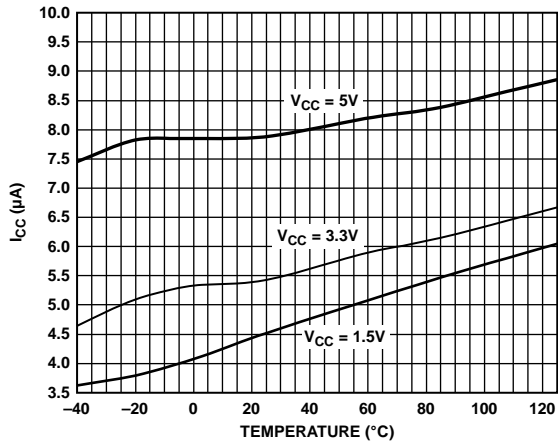


Figure 4. Supply Current vs. Temperature

05305-004

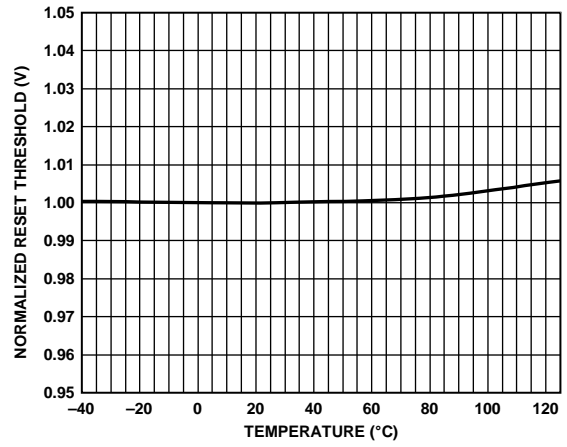


Figure 7. Normalized Reset Threshold vs. Temperature

05305-007

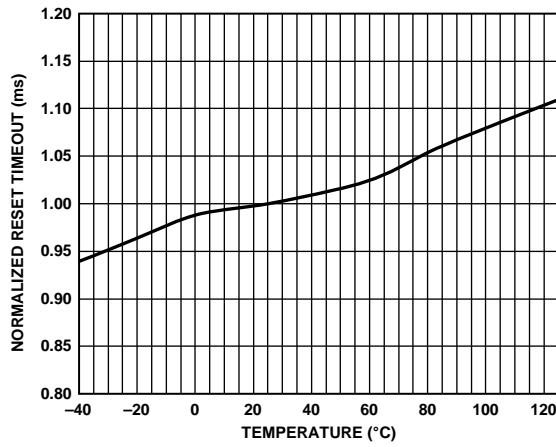


Figure 5. Normalized Reset Timeout Period vs. Temperature

05305-005

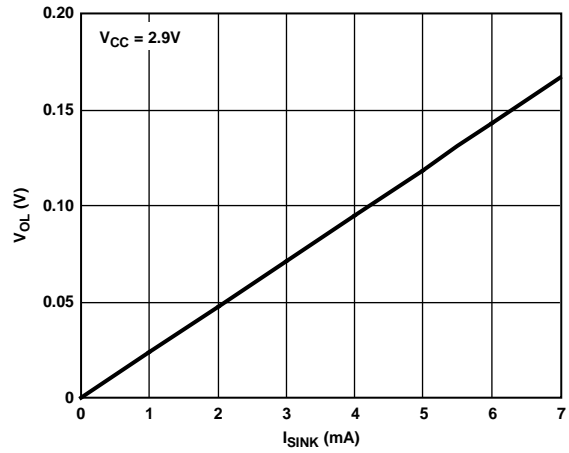


Figure 8. Output Voltage Low vs. I_{SINK}

05305-008

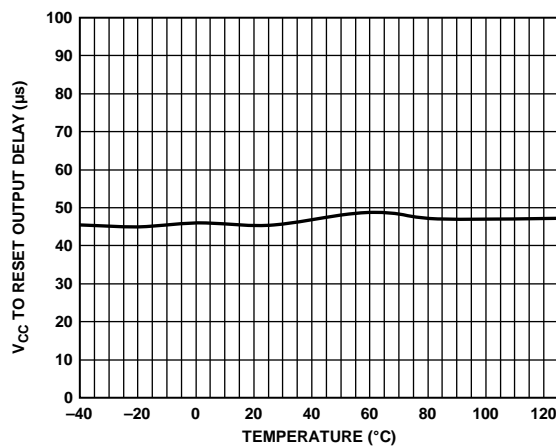


Figure 6. V_{CC} to Reset Output Delay vs. Temperature

05305-006

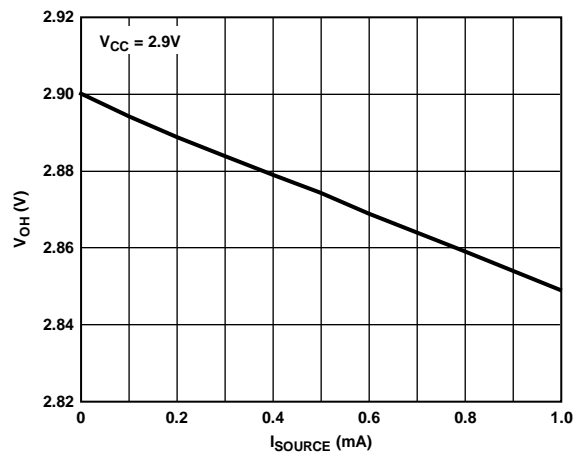


Figure 9. Output Voltage High vs. I_{SOURCE}

05305-009

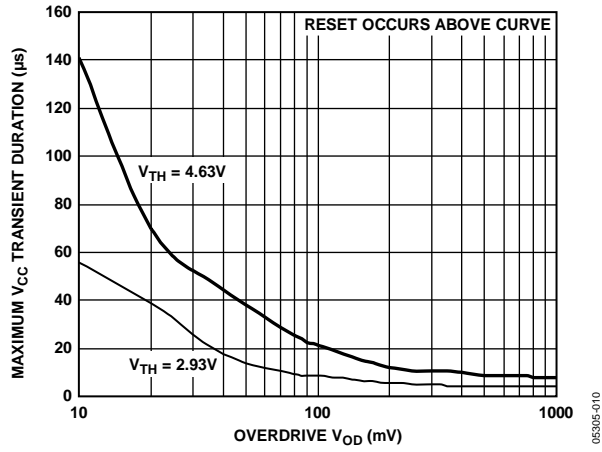


Figure 10. Maximum V_{CC} Transient Duration vs. Reset Threshold Overdrive

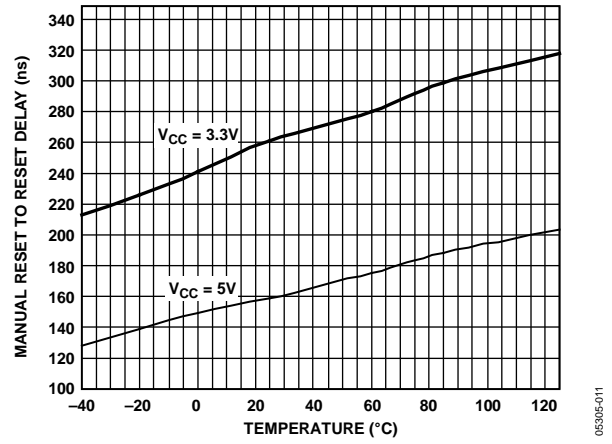


Figure 11. Manual Reset Minimum Pulse Width vs. Temperature

CIRCUIT DESCRIPTION

The [ADM6384](#) provides microprocessor supply voltage supervision by controlling the microprocessor reset input. Code execution errors are avoided during power-up, power-down, and brownout conditions by asserting a reset signal when the supply voltage is below a preset threshold. In addition, the [ADM6384](#) allows supply voltage stabilization with a fixed timeout before the reset deasserts after the supply voltage rises above the threshold. If the user detects a problem with the system operation, a manual reset input is available to reset the microprocessor by means of an external push-button, for example.

RESET OUTPUT

The [ADM6384](#) features an active low, push pull reset output. The reset signal is guaranteed to be logic low for V_{CC} down to 1 V.

The reset output is asserted when V_{CC} is below the reset threshold (V_{TH}) or when \overline{MR} is driven low. Reset remains asserted for the duration of the reset active timeout period (t_{RP}) after V_{CC} rises above the reset threshold or after \overline{MR} transitions from low to high. Figure 12 illustrates the behavior of the reset outputs.

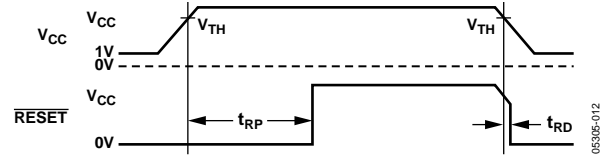


Figure 12. Reset Timing Diagram

MANUAL RESET INPUT

The [ADM6384](#) features a manual reset input (\overline{MR}) that, when driven low, asserts the reset output. When \overline{MR} transitions from low to high, reset remains asserted for the duration of the reset active timeout period before deasserting. The \overline{MR} input has a 52 k Ω internal pull-up so that the input is always high when unconnected. An external push-button switch can be connected between \overline{MR} and ground so that the user can generate a reset. Debounce circuitry for this purpose is integrated on-chip. Noise immunity is provided on the \overline{MR} input, and fast, negative going transients of up to 100 ns (typical) are ignored. A 0.1 μ F capacitor between \overline{MR} and ground provides additional noise immunity.

APPLICATIONS INFORMATION

NEGATIVE GOING V_{CC} TRANSIENTS

To avoid unnecessary resets caused by fast power supply transients, the ADM6384 is equipped with glitch rejection circuitry. The typical performance characteristic shown in Figure 10 plots V_{CC} transient duration vs. the transient magnitude. The curves show combinations of transient magnitude and duration for which a reset is not generated for 4.63 V and 2.93 V reset threshold devices. For example, with the 2.93 V threshold, a transient that goes 100 mV below the threshold and lasts 8 μ s typically does not cause a reset, but if the transient is any greater in magnitude or duration, a reset is generated. An optional 0.1 μ F bypass capacitor mounted close to V_{CC} provides additional glitch rejection.

ENSURING RESET VALID TO $V_{CC} = 0$ V

Both active low and active-high reset outputs are guaranteed to be valid for V_{CC} as low as 1 V. However, by using an external resistor with push pull configured reset outputs, valid outputs for V_{CC} as low as 0 V are possible. For an active low reset output, a resistor connected between $\overline{\text{RESET}}$ and ground pulls the output low when it is unable to sink current. Use a large resistance such as 100 k Ω to avoid overloading the reset output when V_{CC} is above 1 V.

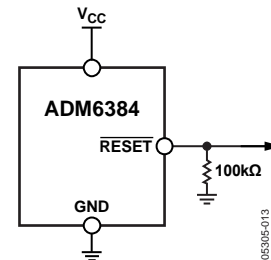
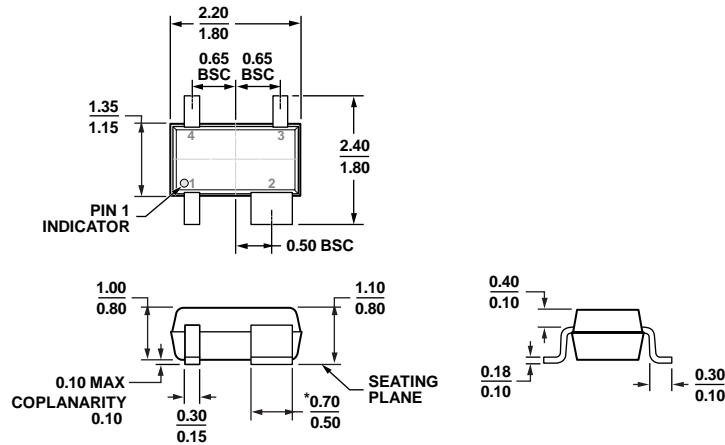


Figure 13. Ensuring Reset Valid to $V_{CC} = 0$ V

OUTLINE DIMENSIONS



*PACKAGE OUTLINE CORRESPONDS IN FULL TO EIAJ SC82 EXCEPT FOR WIDTH OF PIN 2 AS SHOWN.

Figure 14. 4-Lead Thin Shrink Small Outline Transistor Package [SC70] (KS-4)

Dimensions shown in millimeters

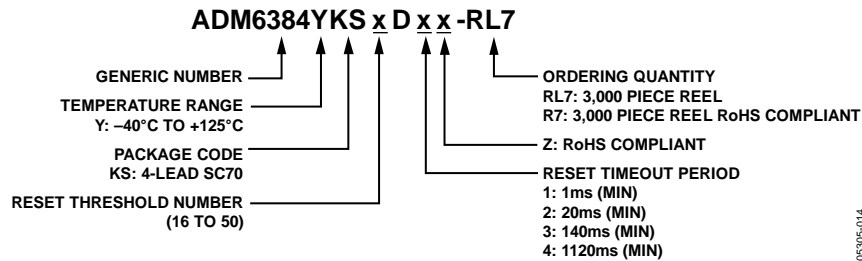


Figure 15. Ordering Code Structure

ORDERING GUIDE

| Standard Models ^{1, 2, 3} | Reset Threshold (V) | Reset Timeout (ms) | Temperature Range | Package Description | Package Option | Ordering Quantity | Marking Code |
|------------------------------------|---------------------|--------------------|-------------------|---------------------|----------------|-------------------|--------------|
| ADM6384YKS17D3Z-R7 | 1.67 | 140 | -40°C to +125°C | 4-Lead SC70 | KS-4 | 3,000 | N0R |
| ADM6384YKS23D3Z-R7 | 2.31 | 140 | -40°C to +125°C | 4-Lead SC70 | KS-4 | 3,000 | N0R |
| ADM6384YKS29D1Z-R7 | 2.93 | 1 | -40°C to +125°C | 4-Lead SC70 | KS-4 | 3,000 | N0R |
| ADM6384YKS29D3Z-R7 | 2.93 | 140 | -40°C to +125°C | 4-Lead SC70 | KS-4 | 3,000 | N0R |
| ADM6384YKS31D1Z-R7 | 3.08 | 1 | -40°C to +125°C | 4-Lead SC70 | KS-4 | 3,000 | N0R |
| ADM6384YKS31D2Z-R7 | 3.08 | 20 | -40°C to +125°C | 4-Lead SC70 | KS-4 | 3,000 | N0R |
| ADM6384YKS39D2Z-R7 | 3.9 | 20 | -40°C to +125°C | 4-Lead SC70 | KS-4 | 3,000 | N0R |
| ADM6384YKS46D2Z-R7 | 4.63 | 20 | -40°C to +125°C | 4-Lead SC70 | KS-4 | 3,000 | N0R |

¹ Z = RoHS Compliant Part.

² The ADM6384 includes many device options; however, not all options are released for sale. Released options are called standard models and are listed in the Ordering Guide. For the most up to date list of standard models, check the Simple Reset Supervisory IC page on the Analog Devices website. Contact sales for information on non-standard models and be aware that samples and production units have very long lead times.

³ If ordering nonstandard models, complete the ordering code shown in Figure 15 by inserting reset timeout and reset threshold suffixes.

NOTES

Mouser Electronics

Authorized Distributor

Click to View Pricing, Inventory, Delivery & Lifecycle Information:

[Analog Devices Inc.:](#)

[ADM6384YKS45D3Z-R7](#) [ADM6384YKS26D3Z-R7](#) [ADM6384YKS34D2Z-R7](#)