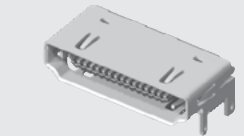




HDMR-19-01-S-SM-PF



HDMR-19-02-S-SM



HDMR-29-01-S-SM

**HDMR SERIES**

# HIGH-SPEED I/O RECEPTACLES

## SPECIFICATIONS

For complete specifications and recommended PCB layouts see [www.samtec.com?HDMR](http://www.samtec.com?HDMR)

- Insulator Material:**  
High Temperature Thermoplastic
- Contact Material:**  
Copper Alloy
- Shell Material:**  
Nickel Plated Brass
- Operating Temp Range:**  
-25 °C to +85 °C
- Plating:**  
Gold on Contacts, Nickel on Shell and Tin on Tails
- Current Rating:**  
1.3 A per pin  
(6 adjacent pins powered)
- Voltage Rating:**  
40 VAC
- Minimum Cycles:**  
100
- Lead-Free Solderable:**  
Yes
- RoHS Compliant:**  
Yes

Meets Digital Display Working Group Single Monitor Interface Specifications

Optional Panel Flange (19 position only)

Hot Pluggable

Selectively Plated

19 or 29 Positions

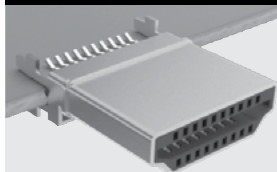
Surface Mount or Through-hole Signal Leads

Through-hole or Surface Mount (19 only) Ground tails

**RUGGEDIZED**  
BY SAMTEC

- Panel flange option
- Locking option

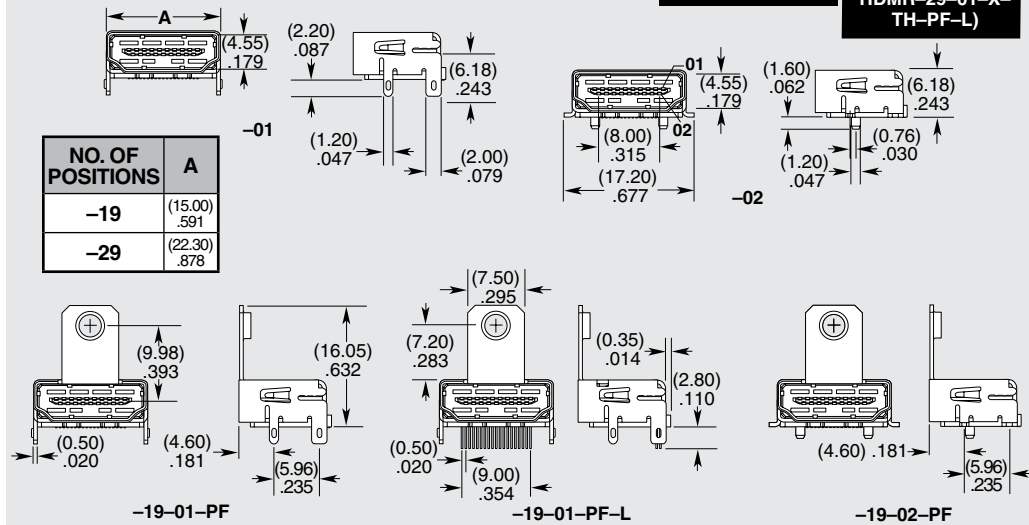
## OTHER SOLUTIONS



HDMP is an Edge Mount plug that mates to HDMR receptacles.

Call Samtec for HDMP Series specifications.

HDMR	NO. OF POSITIONS	LEAD STYLE	PLATING	TAIL OPTION	OPTIONS	"X" R
	-19 = 19 Positions / Mates with HPXXX 5 Pairs	-01 = Through-hole Ground Tails	-S = 30 μ" (0.76 μm) Gold on Mating Area, Tin on Tails	-SM = Surface Mount (Signal Leads)	-PF = Panel Flange	-TR = Tape & Reel
	-29 = 29 Positions / Mates with HPXXX 8 Pairs	-02 = Surface Mount Ground Tails (-19 only)		-TH = Through-hole (Only available on HDMR-19-01-X-TH-PF-L)	-L = Locking Option (Only available on HDMR-19-01-X-TH-PF-L & HDMR-29-01-X-TH-PF-L)	-FR = Full Reel Tape & Reel (must order max. quantity per reel; contact Samtec for quantity breaks)



**Note:**  
Some lengths, styles and options are non-standard, non-returnable.

Due to technical progress, all designs, specifications and components are subject to change without notice.

[WWW.SAMTEC.COM](http://WWW.SAMTEC.COM)

All parts within this catalog are built to Samtec's specifications. Customer specific requirements must be approved by Samtec and identified in a Samtec customer-specific drawing to apply.