

BoPad

Hand-held enclosure with battery compartment, IP40 (IP65)



BOP 500 BE4MC-9005

Order no.: 35150025

* = Available on request.

Characteristics

Colour of enclosure group

Black, similar to RAL 9005

Colour of enclosure group

Black

Protection class

IP 40, 65

Enclosure Material

Enclosures: ABS

Seal / impact protection: TPE

For details see technical information

Scope of delivery

Lid and base, 4 screws, battery compartment lid, screws, battery contacts

Note

Upgradable to IP65 with design seal BOP_ DI.

Important!

To compensate for pressure when temperatures change and cause moisture in the enclosure, we recommend that you use a pressure compensation element.

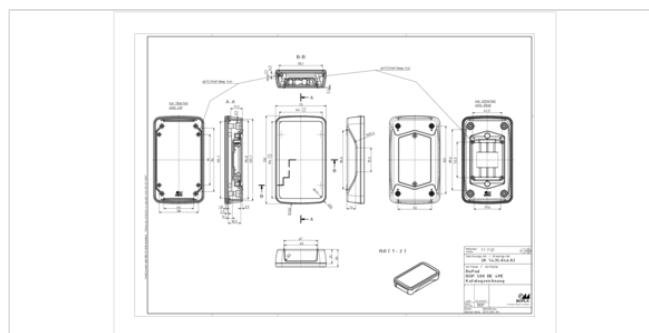
» Additional information

Dimensions

Dimensions

130 x 75 x 26 mm

Product drawing



Technical documentation / Downloads

Technical drawings

3D product data in STEP format: Registration necessary

Drawing for mechanical processing: 35150025 BOP-500-BE-4MC-9005-G.dxf (1.8 MB)

Milling contours are shown here as a DXF file. (Sub D, USB, HDMI, cable glands, ...)

Product drawing in PDF format: 35150025 BOP-500-BE4MC-9005.pdf (218.2 KB)

Product drawing in DXF format: 35150025 BOP-500-BE4MC-9005.dxf (2.5 MB)

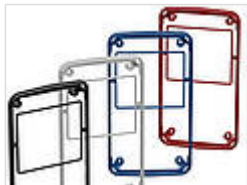
Drawing for max. PCB dimensions in PDF format: 35150025 BOP-500-BE-4MC-9005-pcb.pdf (154.8 KB)

Drawing for max. PCB dimensions in DXF format: 35150025 BOP-500-BE-4MC-9005-pcb.dxf (927.6 KB)

Assembly Instructions

BoPad BOP Batteriekontakte Battery Contacts 35999902.pdf (1.7 MB)

Matching accessories



Design seal, IP65

35250005	BOP 500 DI-9005	For BOP 500, 520	Black
35250006	BOP 500 DI-9016	For BOP 500, 520	White
35250000	BOP 500 DI-5005	For BOP 500, 520	Signal blue
35250001	BOP 500 DI-3001	For BOP 500, 520	Signal red



Impact protection

35350005	BOP 500 S-9005	Black
35350000	BOP 500 S-5005	Signal blue
35350001	BOP 500 S-3001	Signal red
35350003	BOP 500 S-1003	Signal yellow



Screw covers for enclosure screws

35007405	BOP-SA-9005	Black
----------	-------------	-------



Screws (SHR) and distance bolts (DIBLZ) for mounting bosses in plastic enclosures

59006190	SHR Z KA25x6	SD = 2.5 / ND = 2.0 / KD = 4.4
----------	--------------	--------------------------------