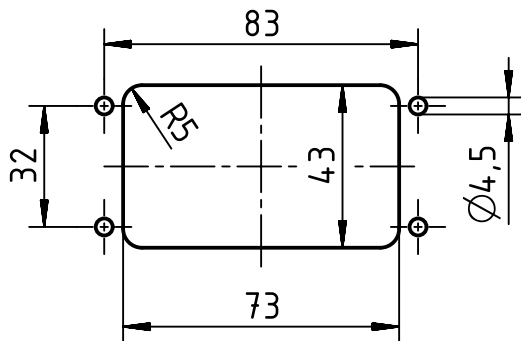
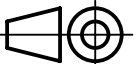



panel cut out (1:2)



 All Dimensions in mm Original Size DIN A4		Scale 1:1	Free size tol.		Ref.
 All rights reserved Department EL PD		Created by LONGL	Inspected by WENE	Standardisation GARSKE	Date 2020-03-17
HARTING Electric GmbH & Co. KG D-32339 Espelkamp		Title Han 10B/EMV HBM Rear-Fit DL w/o frame			State Final Release
		Type TB	Number 09 62 810 0392		Doc-Key / ECM-Nr. 100852832/UGD/001/A 500000160106
					Rev. A Page 1/1