

CRYSTAL CLOCK OSCILLATORS

1330 SERIES

■ Features

- Directly drives the C-MOS IC.
- Available for high frequency range up to 70MHz.
- Accurate duty cycle 45~55%
- High speed Tr/Tf.

■ Absolute Maximum Rating

Supply Voltage (V_{DD}) -0.5~+7.0V DC

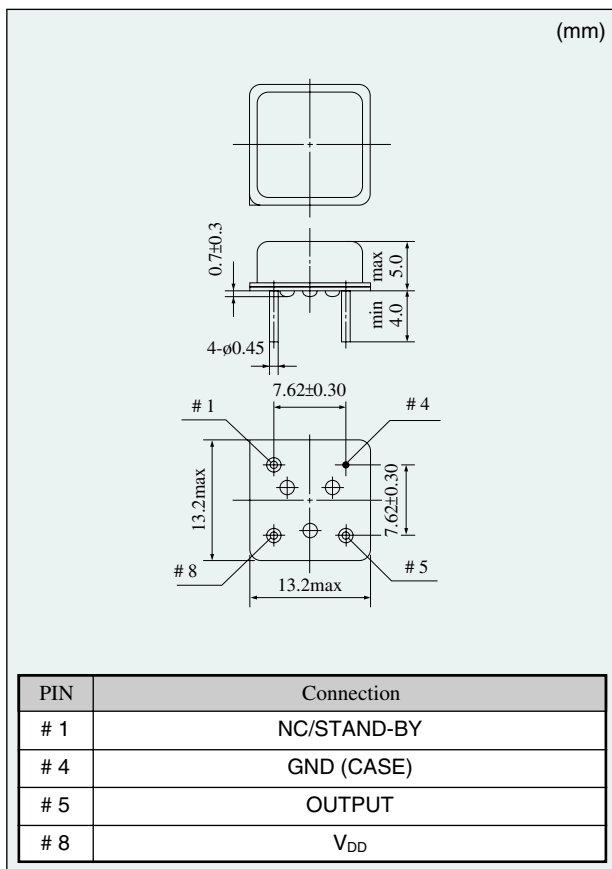
Storage Temperature Range -55~+125°C

Item		Model	1330	1331	1332	1333	1334	1335	1336	1337	1338	1339
Frequency Range	(MHz)		22~23	23~26	26~30	30~34	34~36	36~40	40~44	44~51	51~60	60~70
Supply Voltage (V _{DD})	(V)		+5±10%									
Current Consumption	(mA) +5VDC, 25°C		15 (TYP) 25 (max)			20 (TYP) 30 (max)			25 (TYP) 35 (max)			
V _{OL} max/V _{OH} min	(V)		0.5/V _{DD} -0.5 I _{OL} =8mA I _{OH} =-8mA									
Tr max/Tf max	(ns)		5/5 (Value between 0.1×V _{DD} and 0.9×V _{DD})									
Duty Cycle	(%)		45~55 (at 1/2V _{DD})									
Fanout (gate)	C _L (pF)		15									
Stand-by Function	Tri-state		Yes									

Note: If requested, no stand-by function version #5 pin : H level or no osc, #1 pin : L level (+0.8V max) is available.

If requested, Operating Temp. Range -40 to + 85°C is available. Please contact us for detailed specifications.

■ 1330 Series Outline

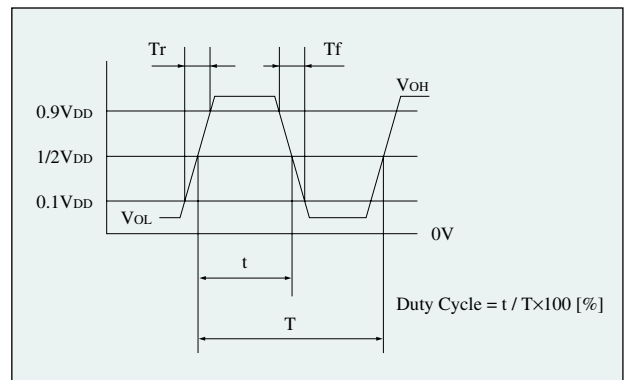


■ Option of Frequency Stability

Frequency stability (×10 ⁻⁶)	±50	±100
Op. Temp.		
0~+70°C	A	B
-10~+70°C	—	G
-20~+70°C	—	M

□ Standard

■ Output Wave <C-MOS>



■ Stand-by Function <Tri-state>

# 1 pin input	# 5 pin output
H level (+2.2 Vmin) or open	Operating
L level (+0.8 Vmax)	High impedance