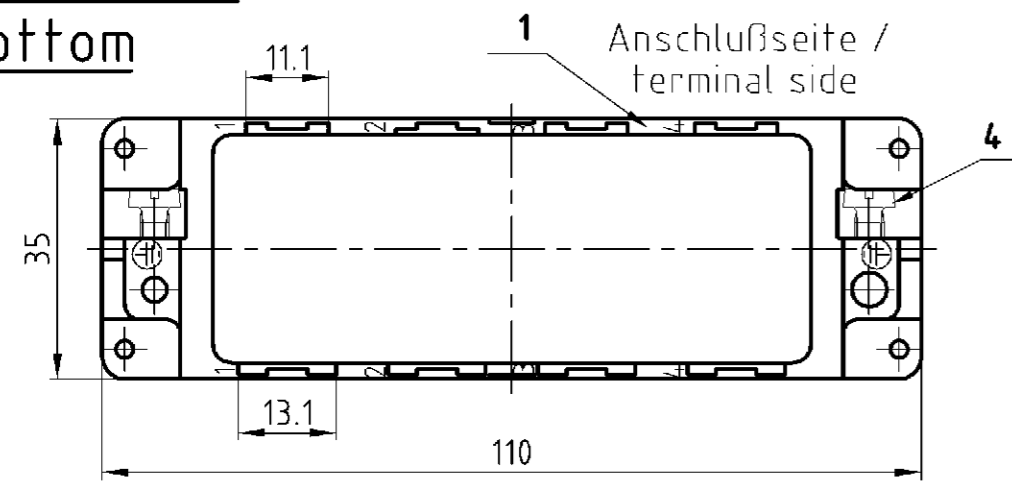
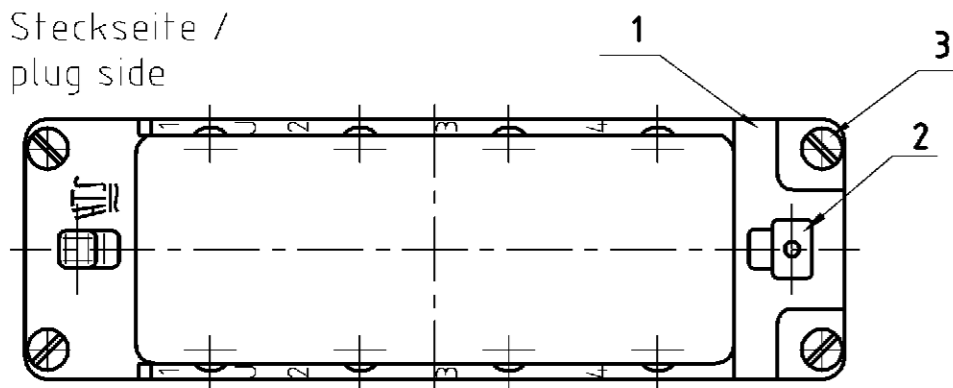


LOC	DIST	REVISIONS				DATE	DWN	APVD
		P	LTR	DESCRIPTION				
		BESCHREIBUNG						
AI	-				01.07.06	GW	ST	
PROJEKT NR.: B 91 04 65		B2	ECR-05-006046					

**Unterteil /  
bottom**

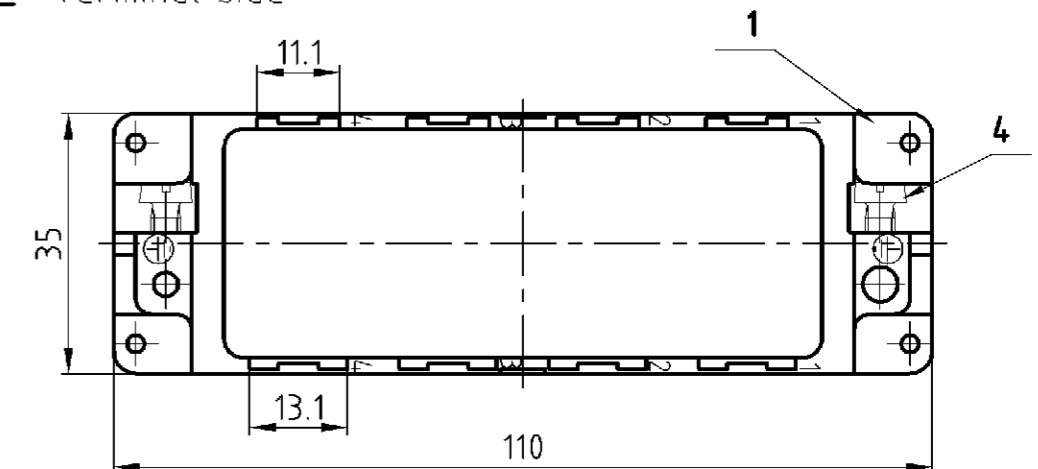


**Steckseite /  
plug side**

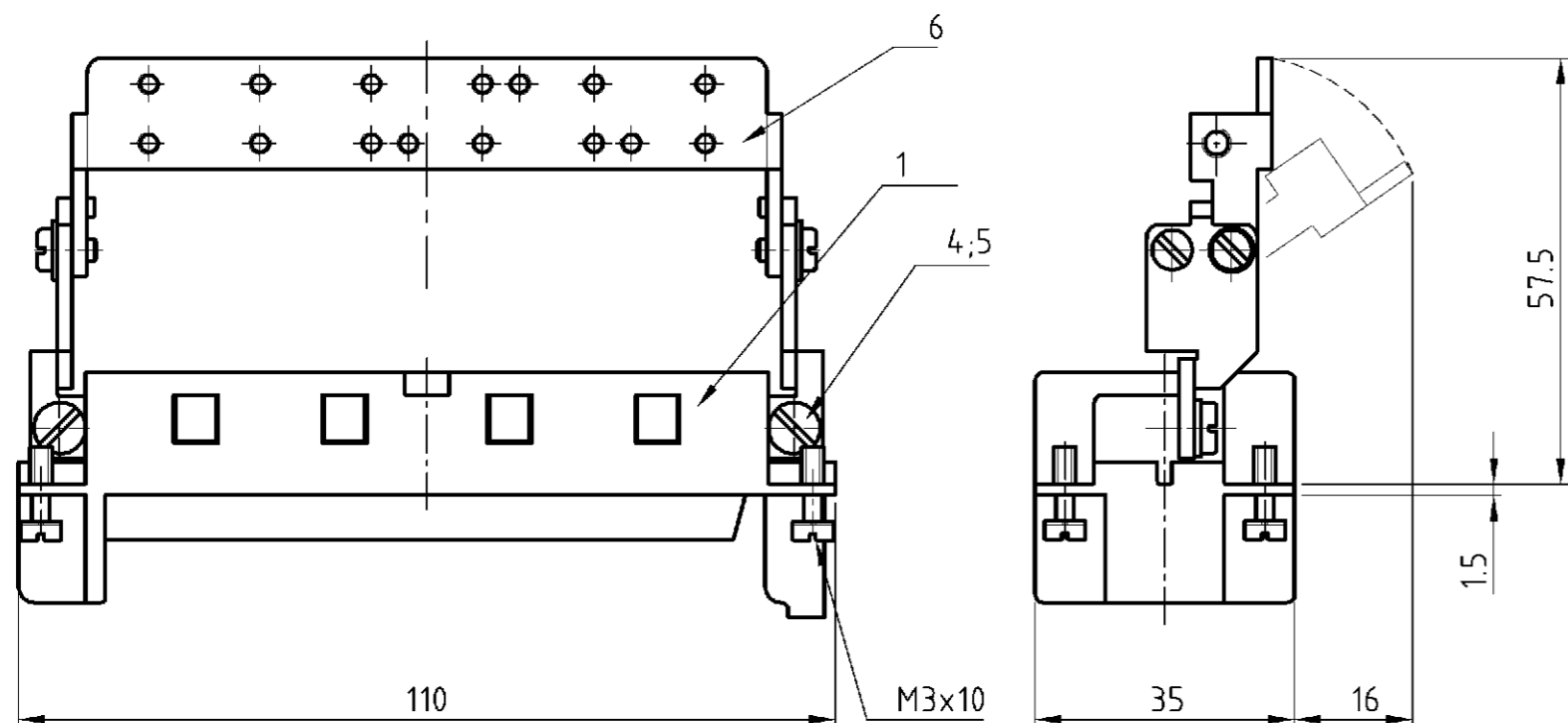
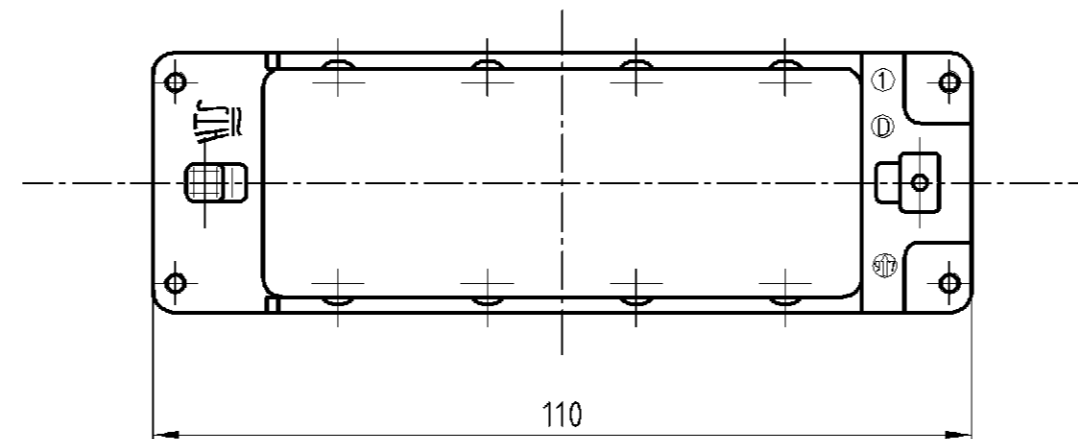
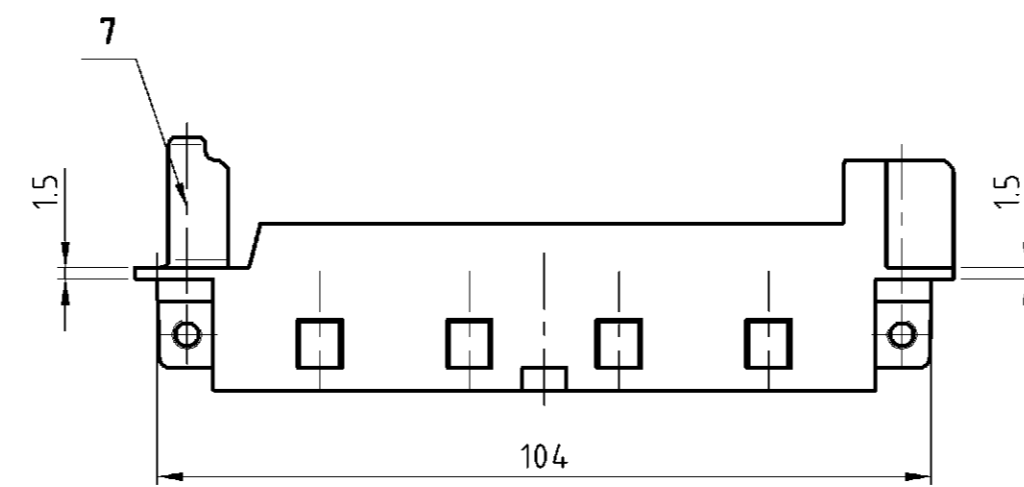
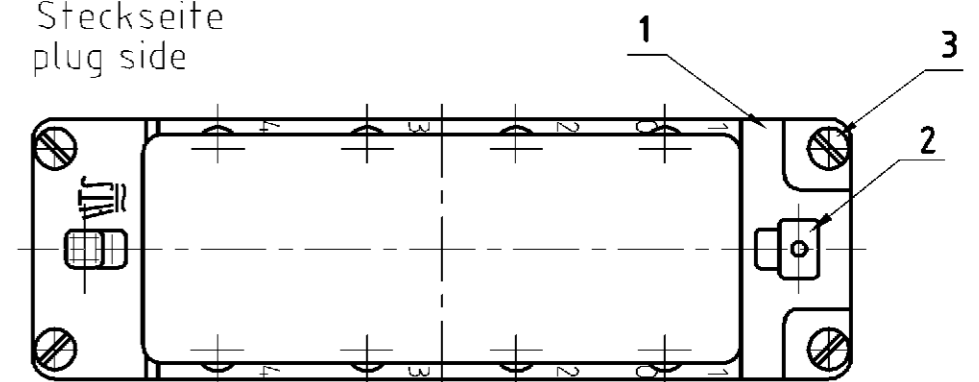


**Oberteil /  
upper part**

Anschlußseite  
terminal side



**Steckseite  
plug side**



						1	2			
			1			Modulrahmen Oberteil module frame upper part	Zink-Leg./ zinc alloy	Verzinkt/ tin plated	7	Sonder für Griffblech/ special for grip
			1	1		Schirmbügel schwenkbar/ screen termination roofing	Stahl/steel	Verzinkt/ tin plated	6	
			2	2		Federring/ spring lock washer	Stahl/steel	Verzinkt/ tin plated	5	DIN 128 - A4
2	2	2	2	2	2	Zylinderschraube mit Schlitz/ cylinder screw with slit	Messing/brass	Vernickelt/ nickel plated	4	DIN EN ISO 1207
4	4	4	4	4	4	Befestigungsschraube/ fixing screw	Stahl/steel	Vernickelt/ nickel plated	3	M3x10
1	1	1	1	1	1	Erdkontaktfeder/ spring f. grounding cont.	Bronze/ bronze	Vernickelt/ nickel plated	2	
1	1		1	1	1	Modulrahmen/ module frame	Zink-Leg./ zinc alloy	Verzinkt/ tin plated	1	
0-70-60-50-40-30-20-1						DESCRIPTION / BENENNUNG	MATERIAL	SURFACE/COLOR	ITEM NO. Pos.	NOTES / BEMERKUNGEN
MDL2-GR-U-8-B5-8	MDL2-GR-O-8-B5-8	MDL2-GR-O-8/GB-B1-4	MDL2-GR-U-8/SB-B1-4	MDL2-GR-O-8/SB-B1-4	MDL2-GR-U-8-B1-4	MDL2-GR-O-8-B1-4	ORDERING TEXT/BESTELTEXT	DWN wroblewski 06.10.2003	APVD Baum 06.10.2003	NAME <b>AMP</b> HTS Elektrotechnik 53819 Neunkirchen, Germany
DIMENSIONS: DIMENSIONEN: mm							TOLERANCES UNLESS OTHERWISE SPECIFIED ALLGEMEIN TOLERANZEN p. ISO 8015 r. ISO 2768 - mH - E n. DIN 16901 - 14.0		PRODUCT SPEC PRODUKTSPEZ	
MATERIAL							FINISH / OBERFLÄCHE / FARBE		APPLICATION SPEC VERARBEITUNGSSPEZ	
WEIGHT / GEWICHT							CUSTOMER DRAWING		RESTRICTED TO NUR FÜR	
SIZE							CAGE CODE		DRAWING NO. ZEICHNUNGS-NR.	
MASSSTAB							BLATT		OF VON	
REV							REV		REV	

# Mouser Electronics

Authorized Distributor

Click to View Pricing, Inventory, Delivery & Lifecycle Information:

[TE Connectivity:](#)

[1108780-2](#)