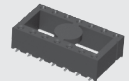
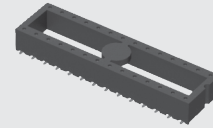


ICF-640-S-O

ICF-328-T-O



ICF-314-S-O

(2.54 mm) .100"

ICF SERIES

SURFACE MOUNT DIP SOCKET

SPECIFICATIONS

For complete specifications and recommended PCB layouts see www.samtec.com?ICF

Insulator Material:

Black Liquid Crystal Polymer

Contact Material:

BeCu

Plating:

Sn or Au over

50 μ " (1.27 μ m) Ni

Operating Temp Range:

-55 °C to +125 °C

Insertion Depth:

(2.54 mm) .100" to

(3.81 mm) .150"

Insertion Force/Contact:

(1.39 N) 5 oz average

Withdrawal Force/Contact:

(1.11 N) 4 oz average

RoHS Compliant:

Yes

PROCESSING

Lead-Free Solderable:

Yes

SMT Lead Coplanarity:

(0.15 mm) .006" max*

*(.004" stencil solution may be available; contact

IPG@samtec.com)

RECOGNITIONS

For complete scope of

recognitions see

www.samtec.com/quality



FILE NO. E111594

TYPE SOCKET

ICF
=Surface Mount
IC Socket

ROW SPACING & NO. OF CONTACTS

PLATING OPTION

-S
=30 μ " (0.76 μ m)
Gold on contact,
Matte Tin on tail

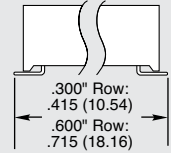
-T
= Matte Tin

TAIL OPTION

-I
=Tails In



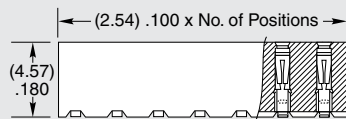
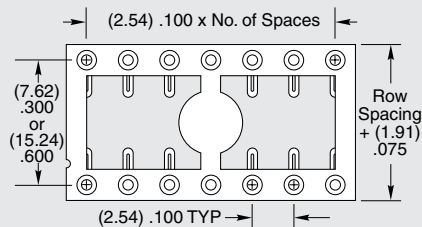
-O
=Tails Out



-TR
=Tape &
Reel
Packaging



Specify from chart below



"-XXX"	Row Space	No. of Contacts
-308	(7.62) .300	08
-314		14
-316		16
-318		18
-320		20
-328	(15.24) .600	28
-624		24
-628		28
-632		32
-640		40

Note:
Some sizes, styles and options are non-standard, non-returnable.

Mouser Electronics

Authorized Distributor

Click to View Pricing, Inventory, Delivery & Lifecycle Information:

Samtec:

[ICF-308-T-O](#) [ICF-318-T-O](#) [ICF-628-T-O-TR](#) [ICF-328-T-O-TR](#) [ICF-632-S-O-TR](#) [ICF-640-S-O](#) [ICF-316-T-O](#) [ICF-628-T-O](#) [ICF-308-T-I-TR](#) [ICF-308-S-O](#) [ICF-316-T-O-TR](#) [ICF-308-S-O-TR](#) [ICF-308-T-O-TR](#) [ICF-314-S-I-TR](#) [ICF-318-S-I-TR](#) [ICF-324-T-O](#) [ICF-628-T-I-TR](#) [ICF-632-T-I](#) [ICF-640-S-O-TR](#) [ICF-314-S-O-TR](#) [ICF-316-F-I](#) [ICF-322-S-I](#) [ICF-322-T-O](#) [ICF-328-S-O-TR](#) [ICF-328-T-I-TR](#) [ICF-628-S-O-TR](#) [ICF-632-S-I-TR](#) [ICF-648-T-O](#) [ICF-314-F-O](#) [ICF-316-S-O](#) [ICF-316-S-O-TR](#) [ICF-316-T-I-TR](#) [ICF-320-T-I](#) [ICF-320-T-O](#) [ICF-320-T-O-TR](#) [ICF-324-S-I-TR](#) [ICF-324-S-O](#) [ICF-328-T-O](#) [ICF-648-S-I](#) [ICF-308-F-O](#) [ICF-308-S-I-TR](#) [ICF-314-S-I](#) [ICF-316-F-O](#) [ICF-316-S-I-TR](#) [ICF-318-S-O](#) [ICF-320-S-I](#) [ICF-328-T-I](#) [ICF-624-T-O](#) [ICF-628-S-O](#) [ICF-632-S-O](#) [ICF-648-T-I](#) [ICF-320-S-O](#) [ICF-322-S-O](#) [ICF-324-S-O-TR](#) [ICF-324-T-I-TR](#) [ICF-328-S-O](#) [ICF-640-S-I-TR](#) [ICF-640-T-I](#) [ICF-308-T-I](#) [ICF-316-T-I](#) [ICF-328-F-O](#) [ICF-628-F-I](#) [ICF-628-F-O](#) [ICF-632-T-I-TR](#) [ICF-308-F-I](#) [ICF-318-S-O-TR](#) [ICF-318-T-O-TR](#) [ICF-324-S-I](#) [ICF-624-S-I-TR](#) [ICF-632-F-I](#) [ICF-640-T-I-TR](#) [ICF-308-S-I](#) [ICF-316-S-I](#) [ICF-320-S-I-TR](#) [ICF-320-S-O-TR](#) [ICF-324-T-I](#) [ICF-624-S-O](#) [ICF-624-T-I-TR](#) [ICF-640-S-I](#) [ICF-648-S-O](#) [ICF-308-F-I-TR](#) [ICF-314-T-I](#) [ICF-314-T-I-TR](#) [ICF-314-T-O](#) [ICF-314-T-O-TR](#) [ICF-318-T-I](#) [ICF-320-F-O](#) [ICF-324-F-O](#) [ICF-624-F-O](#) [ICF-624-S-I](#) [ICF-632-F-I-TR](#) [ICF-632-F-O](#) [ICF-640-T-O](#) [ICF-640-T-O-TR](#) [ICF-314-F-I](#) [ICF-320-T-I-TR](#) [ICF-328-F-I](#) [ICF-328-S-I](#) [ICF-624-T-O-TR](#) [ICF-628-S-I](#)