



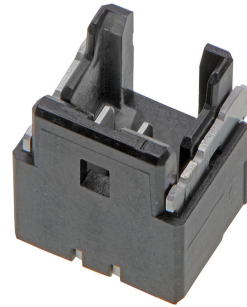
Part Number : [2140940020](#)

Product Description : OneBlade Header, 1.00mm Pitch, Single Row, Vertical, Surface Mount, Tin (Sn) Plating, Friction Lock, 2 Circuits, Tape and Reel

Series Number : 214094

Status : Active

Product Category : PCB Headers and Receptacles



Documents & Resources

Drawings

[Drawing 2140940020_sd.pdf](#)

3D Models and Design Files

[2D Drawing DXF 2140940020.dxf](#)

[2D Drawing DXF PDF 2140940020.pdf](#)

[3D Model 2140940020_stp.zip](#)

[3D Model PDF 2140940020.pdf](#)


Specifications

[Packaging Specification 2140949200-SPK-200.pdf](#)

[Product Specification 2140920000-PS-000.pdf](#)

Product Environment Compliance

Compliance

GADSL/IMDS	Compliant with Exemption 44
China RoHS	
EU ELV	Not Relevant
Low-Halogen Status	Not Low-Halogen per IEC 61249-2-21
REACH SVHC	Not Contained per D(2023)3788-DC (14 Jun 2023)
EU RoHS	Compliant per EU 2015/863

Multiple Part Product Compliance Statements

- Eu RoHS
- REACH SVHC

- Low-Halogen

Multiple Part Industry Compliance Documents

- IPC 1752A Class C
- IPC 1752A Class D
- Molex Product Compliance Declaration
- IEC-62474
- chemSHERPA (xml)

EU RoHS Certificate of Compliance

Part Details

General

Status	Active
Category	PCB Headers and Receptacles
Series	214094
Description	OneBlade Header, 1.00mm Pitch, Single Row, Vertical, Surface Mount, Tin (Sn) Plating, Friction Lock, 2 Circuits, Tape and Reel
Application	Signal, Wire-to-Board
Component Type	PCB Header
Product Family	OneBlade Wire-to-Board Connector System
Product Name	OneBlade
UPC	195842620742

Agency

UL	E29179
----	--------

Electrical

Current - Maximum per Contact	2.5A
Voltage - Maximum	100V AC (RMS)/DC

Physical

Breakaway	No
Circuits (Loaded)	2
Circuits (maximum)	2
Color - Resin	Black

Durability (mating cycles max)	30
First Mate / Last Break	No
Glow-Wire Capable	No
Guide to Mating Part	No
Keying to Mating Part	None
Lock to Mating Part	Yes
Mated Height	6.50mm
Material - Metal	Brass
Material - Plating Mating	Matte Tin
Material - Plating Termination	Matte Tin
Material - Resin	Polyamide
Net Weight	126.270/mg
Number of Rows	1
Orientation	Vertical
Packaging Type	Embossed Tape on Reel
PCB Locator	No
PCB Retention	Yes
Pitch - Mating Interface	1.00mm
Pitch - Termination Interface	1.00mm
Plating min - Mating	1.000µm
Plating min - Termination	1.000µm
Polarized to Mating Part	Yes
Polarized to PCB	Yes
Robotic Placement	Vacuum Pick-Up Area
Temperature Range - Operating	-40° to +105°C
Termination Interface Style	Surface Mount

Mates With / Use With

Mates with Part(s)

Description	Part Number
OneBlade Single Row Receptacle Housings	<u>214092</u>

This document was generated on Aug 18, 2023