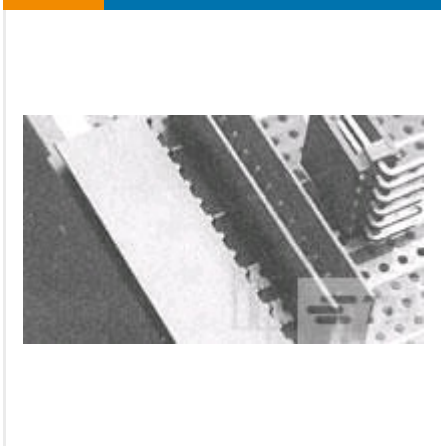




CONNECTORS

MULTIPLE CONFIGURATION PCB HEADERS & RECEPTACLES



✓ Active

TE CONNECTIVITY (TE)

HEADER HE14 RA 6 P

AMPMODU | AMPMODU

281698-6

TE Internal Number: 281698-6

Alias ID: CN266

EU RoHS Compliant

EU ELV Compliant

Number of Positions 6

Centerline (Pitch) 2.54 mm [.1 in]

Connector & Contact Terminates To Printed Circuit Board

Connector Style Plug

Header Type Shrouded

[↓ PRODUCT DRAWING](#)
English

[↓ 3D PDF](#)

DOCUMENTATION

Product Drawings

HEADERS HE14, SINGLE ROW, RIGHT ANGLE

PDF (TIFF AVAILABLE)

English

CAD Files

3D PDF

PDF

3D

Customer View Model

3D_STP.ZIP

English

Customer View Model

3D_IGS.ZIP

English

Customer View Model

2D_DXF.ZIP

English

Customer View Model

2D_DXF.ZIP

English

3D PDF

PDF

3D

Customer View Model

3D_IGS.ZIP

English

Customer View Model

3D_STP.ZIP

English

Product Specifications

Product Specification

MODULAR HEADERS AND PLUGS ACCORDING TO IEC 60603-8 SERIES (HE13 HE14 SERIES)

PDF

French

FEATURES



Please review product documents or [contact us](#) for the latest agency approval information.

Please Note: Use the Product Drawing for all design activity.

Product Type Features

Connector & Contact Terminates To Printed Circuit Board

Connector Style Plug

Header Type Shrouded

PCB Mounting Orientation Right Angle

Connector Type Header

Row-to-Row Spacing 2.54 mm [.1 in]

Gasket Without

Product Type Connector

Stabilizers Without

Board Standoff Without

Strain Relief Without

Configuration Features

Selectively Loaded No

Number of Positions 6

Number of Rows 1

Keyed No

Body Features

Post Size .64 mm [.025 in]

Contact Features

Solder Tail Contact Plating Material Tin over Nickel

Contact Protection With

Contact Shape Square

Contact Current Rating (Max) (A) 3

Contact Base Material Phosphor Bronze

Contact Type Pin

Contact Mating Area Plating Material Tin

Contact Protection Type Shrouded

Termination Features

Termination Method to PC Board Through Hole

Termination Method to Wire/Cable Crimp, Insulation Displacement Crimp (IDC)

Termination End Plating Material Tin-Lead

Termination Post Length (mm) 2.9

Mechanical Attachment

Panel Mount Feature Without

Mating Connector Lock Without

PCB Mounting Style Through Hole

Mating Alignment Type Polarization

PCB Mount Retention Without

Mating Alignment Without

Housing Features

Centerline (Pitch) 2.54 mm [.1 in]

Housing Style 2-Sided

Housing Material High Temperature Thermoplastic

Housing Color Blue

Dimensions

Shrouded End Dimension (mm) 1.27

Mating Post Length (mm) 6.75

Usage Conditions

Operating Temperature Range (°C) -55 – 105

Industry Standards

Approved Standards CSA LR7189, UL E28476

UL Flammability Rating UL 94V-0

Packaging Features

Packaging Quantity 4000

Packaging Method Box

Statement of Compliance

Statement of Compliance

PDF
