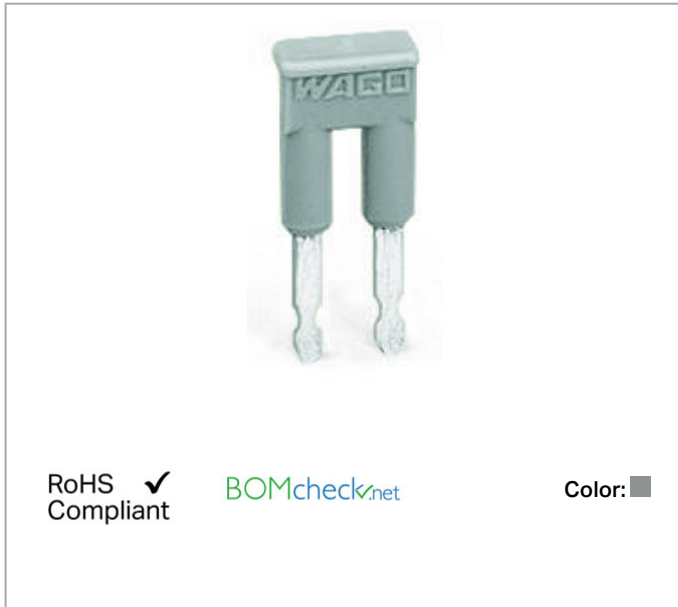


Data sheet | Item number: 280-482

Jumper; 2-way; insulated; gray

www.wago.com/280-482



Data

Physical data

Width	10 mm / 0.394 inch
Depth	4 mm / 0.157 inch

Material Data

Color	gray
Fire load	0.006 MJ
Weight	1.1 g

Commercial data

Packaging type	BOX
Country of origin	DE
GTIN	4044918683845
Customs tariff number	85366990990


Subject to changes. Please also observe the further product documentation!

WAGO Kontakttechnik GmbH & Co. KG
Hansastr. 27
32423 Minden
Phone: +49571 887-0 | Fax: +49571 887-169
Email: info.de@wago.com | Web: www.wago.com

Do you have any questions about our products?
We are always happy to take your call at +49 (571) 887-44222.

Compatible products

tools

	Item no.: 280-432 Operating tool; made of insulating material; 2-way; white	www.wago.com/280-432
--	---	--

Downloads

Documentation

Bid Text

280-482 doc - Datei	Apr 27, 2017	doc 24.1 kB	Download
------------------------	--------------	----------------	----------

280-482 X81 - Datei	Feb 19, 2019	xml 2.6 kB	Download
------------------------	--------------	---------------	----------

Additional Information

Technical explanations	Apr 3, 2019	pdf 2.2 MB	Download
------------------------	-------------	---------------	----------

CAD/CAE-Data

CAD data

2D/3D Models 280-482	URL	Download
----------------------	-----	----------

CAE data

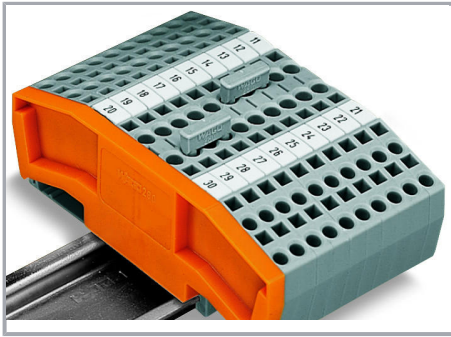
WSCAD Universe 280-482	URL	Download
------------------------	-----	----------

ZUKEN Portal 280-482	URL	Download
----------------------	-----	----------

Installation Notes

Commoning

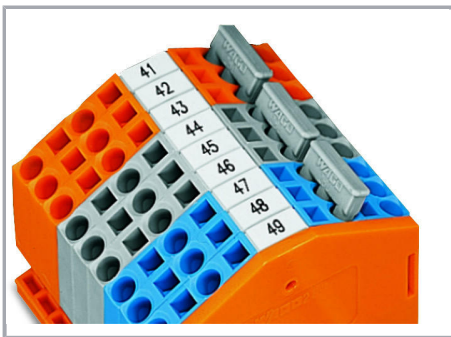
Subject to changes. Please also observe the further product documentation!



Commoning with comb-style jumper bar.

Push comb-style jumper bar down until fully inserted.

Commoning

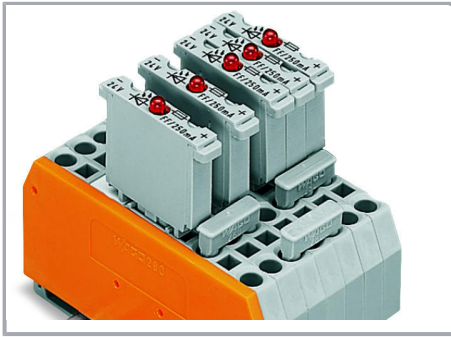


4-conductor through terminal blocks, angled type –

formation of groups with 3-way, comb-style jumper bars

Commoning

Subject to changes. Please also observe the further product documentation!

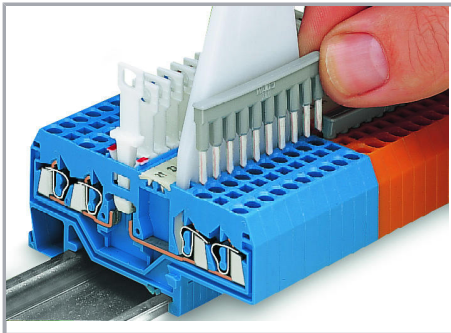


Carrier terminal blocks with component plugs,

alternate comb-style jumper bars,

3-way, comb-style jumper bar

Commoning



Commoning front-entry disconnect terminal blocks via comb-style jumper bar using a 10-pole operating tool.

Subject to changes. Please also observe the further product documentation!