


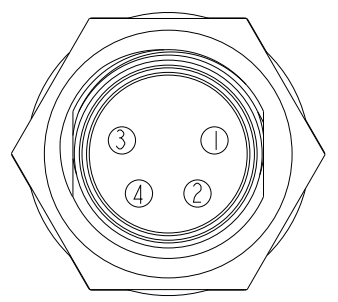
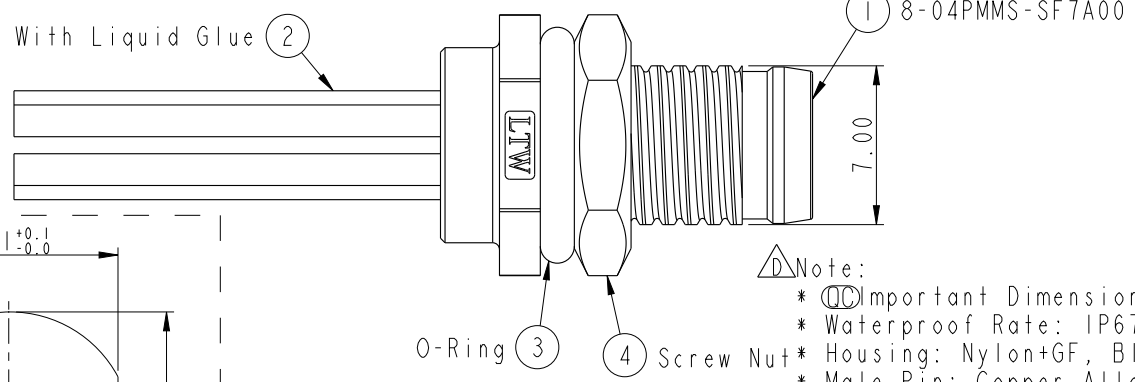
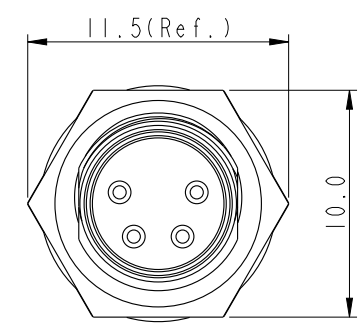
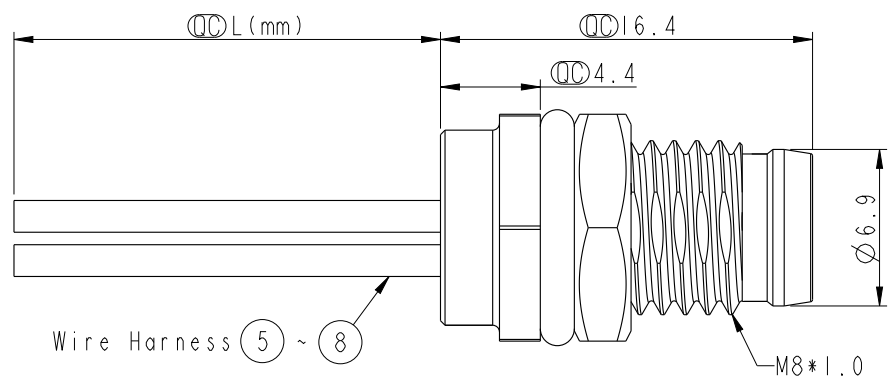
THIS DOCUMENT IS SUBJECT TO CHANGE WITHOUT NOTICE. IT IS CONFIDENTIAL AND A PROPERTY OF Amphenol LTW. DISCLOSURE TO THIRD PARTY HAS TO BE AUTHORIZED BY Amphenol LTW.

REV.	ECN NO.	DATE	SIGN	DESCRIPTION
B	LE31410409~11	2014-01-09	Tony_leng	Change Ball No. & Wire Length
C	E191630	2019-09-18	Ruru	Update Wire Tolarance
D	CI92160	2019/12/21	Peng	DXI

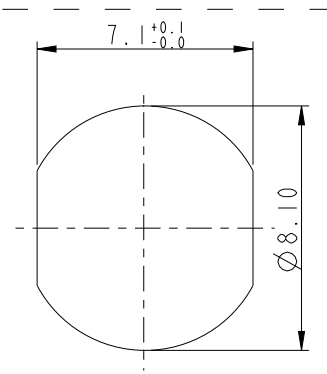
8-04PMMS-SF7AXX 

15:150mm
20:200mm
95:950mm
Cable Pitch Unit=50mm

A0:1000mm
A5:1500mm
Cable Pitch Unit=100mm
Wire Length (L):150~1500 mm


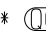



Pin Assignment
Front View



Recommended
Panel Cut-Out

4	Black	黑
3	Blue	藍
2	White	白
1	Brown	棕
Conn.	Wire Color	
	Pin Out	

-  Note:
- *  Important Dimension.
 - * Waterproof Rate: IP67
 - * Housing: Nylon+GF, Black
 - * Male Pin: Copper Alloy, Gold Plated
 - * Shield: Zinc Alloy, Nickel Plated
 - * Nut: Copper Alloy, Nickel Plated
 - * O-Ring: EPDM, Black
 - * Wire Harness: UL1007, 24AWG
 - * Panel Thickness For Snap-in Type Max 3.0mm
 - * Panel Thickness For Screw Type Max 1.9mm
 - * Nut Torque: 4-6 kgf.cm
 - * Wire harness Tolerance: 150~300±15mm
301~1000±20mm
Over1000 ±50/-0mm
- 

UNIT:mm				TITLE		M8 4PIN PANEL F CONN F PIN		Amphenol LTW		ITEM NO		DRAWN BY		DATE	
TOLERANCE		.X ±0.25		SCALE		2:1		DWG NO		8-04PMMS-SF7AXX		CHECKED BY		DATE	
.XX ±0.1		SIZE		A4		SHEET		CUSTOMER		ALTW		APPROVED BY		DATE	
.XXX ±0.05		REV.		D		WC-REV.		8-04PMMS-SF7AXX		Max		Rita		2019-09-18	
ANGLES ±1°		WC-REV.		B.2		 Inspection item		安費諾亮泰企業股份有限公司		8		W10814-03-0001A2		2019-09-18	

Mouser Electronics

Authorized Distributor

Click to View Pricing, Inventory, Delivery & Lifecycle Information:

[Amphenol:](#)

[8-04PMMS-SF7AA5](#) [8-04PMMS-SF7A50](#) [8-04PMMS-SF7AA0](#) [8-04PMMS-SF7A15](#) [8-04PMMS-SF7A30](#)