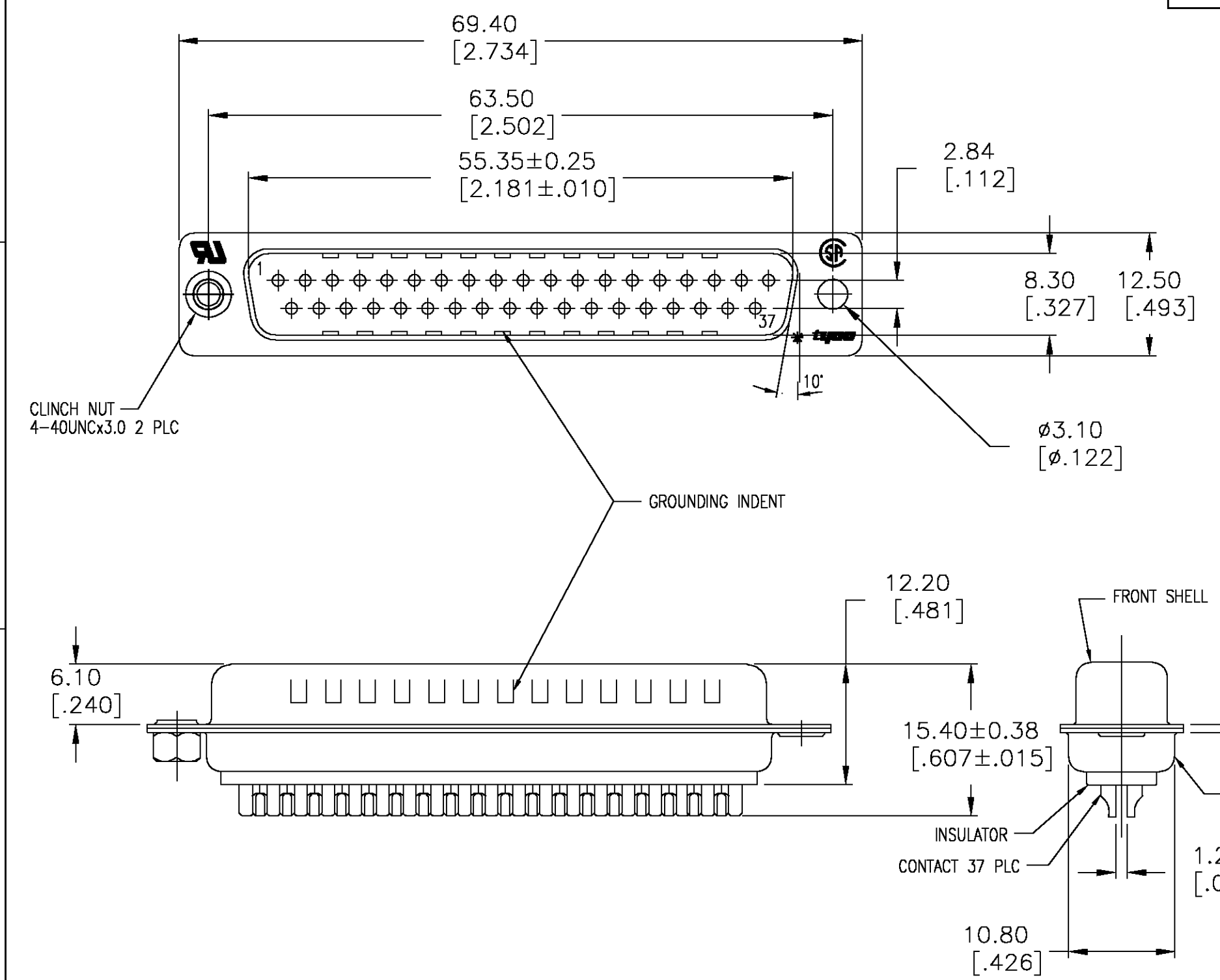


THIS DRAWING IS UNPUBLISHED. RELEASED FOR PUBLICATION
 © COPYRIGHT BY TYCO ELECTRONICS CORPORATION. ALL RIGHTS RESERVED.

LOC	DIST	REVISIONS					
AD	0	P	LTR	DESCRIPTION	DATE	DWN	APVD
			M	REV PER EC 0G3C-337-04	13JUL04	MB	JO



- MATERIAL:**
 1. FRONT INSULATOR: PBT, 30 %GF, UL94V-0, BLACK COLOR
 BACK INSULATOR: PBT, 30 %GF, UL94V-0, BLACK COLOR
 CONTACT: BRASS
 FRONT SHELL: STEEL
 BACK SHELL: STEEL
 CLINCH NUTS: BRASS
- FINISH:**
 2. CONTACT: GOLD PLATING 0.0002[.000008] MIN ON CONTACT AREA 0.00229 [.000090] MIN TIN-LEAD PLATING ALL OVER 0.00127[.000050] MIN NICKEL
 3. CONTACT: GOLD PLATING 0.00076[.000030] MIN ON CONTACT AREA 0.00229 [.000090] MIN TIN-LEAD PLATING ALL OVER 0.00127[.000050] MIN NICKEL
 4. SHELL: TIN 0.0241[.000095] MIN FULL SHELL
 5. SHELL: ZINC 0.00076[.000300] MIN FULL SHELL
 6. CONTACT: GOLD PLATING 0.0002[.000008] MIN ON CONTACT AREA 0.00229 [.000090] MIN TIN PLATING ALL OVER 0.00127[.000050] MIN NICKEL
 7. CLINCH NUTS: NICKEL PLATING .00305-.00508[.000120-.000200]
- 8. SPECIFICATION**
 ELECTRICAL CHARACTERISTICS: CURRENT RATING: 3 AMPERES
 DIELECTRIC WITHSTANDING VOLTAGE: AC 1000V r.m.s
 INSULATION RESISTANCE: 5000 MEGOHMS MINIMUM AT DC 500V
 CONTACT RESISTANCE: 10 MILLIOHMS MAXIMUM.
9. PRELIMINARY PART
 10. PLUG ASSEMBLY MATES WITH ANY 25 POSITION RECEPTACLE IN AMPLIMITE SERIES
 11. SOLDER CUP WILL ACCOMMODATE 20 MAX AWG WIRE.
 12. LEAD FREE PART

12/9	STANDARD	NO	YES	6	4	747916-7
	STANDARD	YES	YES	2	4	747916-6
	STANDARD	NO	YES	3	4	747916-5
	STANDARD	NO	NO	2	5	747916-4
	STANDARD	NO	YES	2	4	747916-2
	PACKAGING TYPE	CLINCH NUTS	GROUNDING INDENTS	CONTACTS	SHELLS	PART NO

THIS DRAWING IS A CONTROLLED DOCUMENT.		DWN	M.BINNER	04MAR03	tyco Tyco Electronics Corporation Harrisburg, Pa 17105-3608
DIMENSIONS: mm [INCHES]		CHK	R.BENDORF	05MAR03	
TOLERANCES UNLESS OTHERWISE SPECIFIED:		APVD	R.BENDORF	05MAR03	NAME
0 PLC ± -		PRODUCT SPEC			PLUG ASSEMBLY, SOLDER CUP, SIZE 4, 37 POSN, HD-20, AMPLIMITE
1 PLC ± 0.25		APPLICATION SPEC			
2 PLC ± 0.13		WEIGHT			SIZE
3 PLC ± 0.05		CUSTOMER DRAWING			CAGE CODE
4 PLC ± -		SCALE			DRAWING NO
ANGLES ± 4°		SHEET			RESTRICTED TO
MATERIAL SEE NOTES		FINISH SEE TABLE			1 OF 1
		REV			M