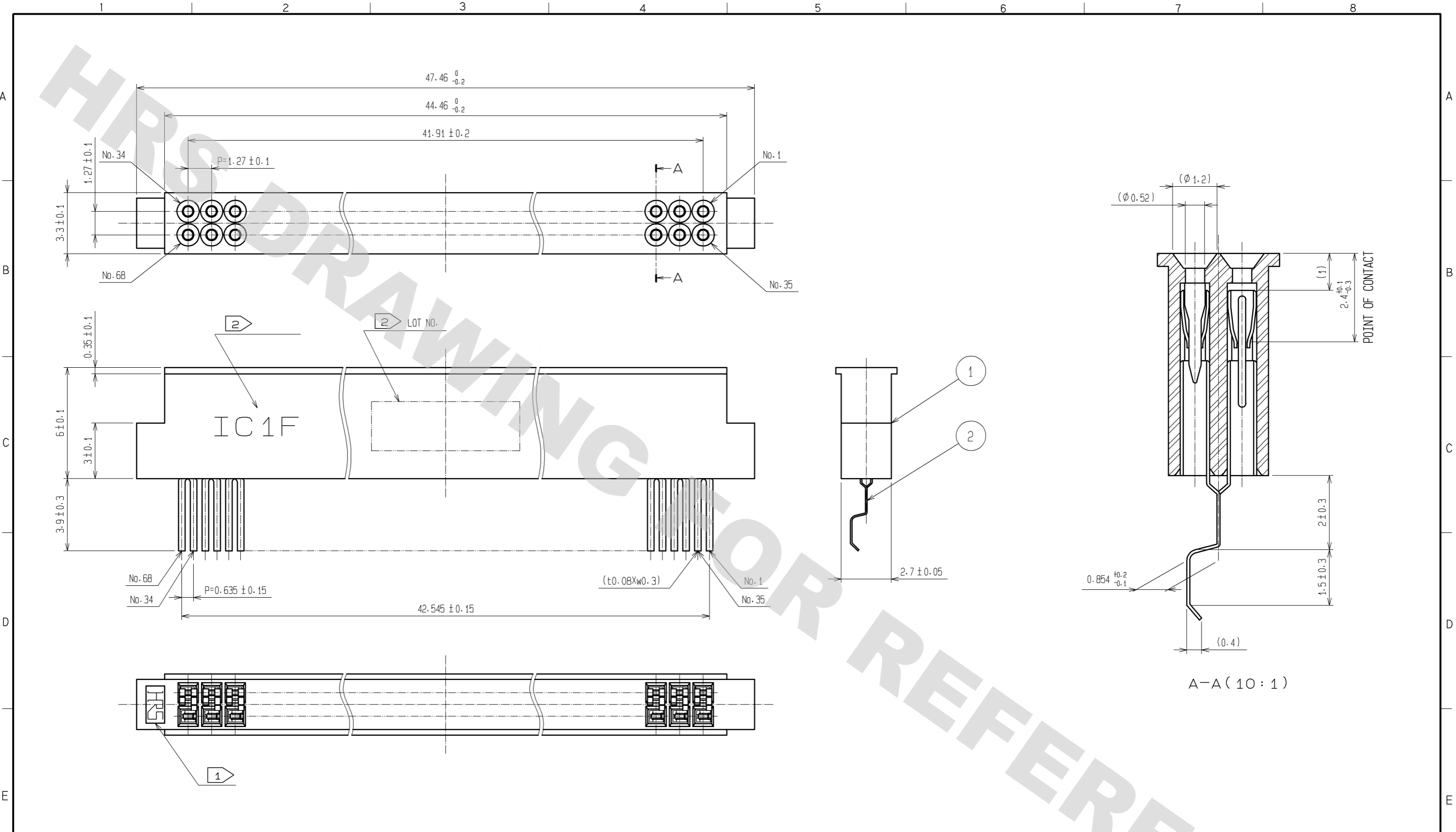


DRAWING FOR REFERENCE: This is subject to change without notice  
08/11/2012



NOTES 1 HRS MARK COULD BE EITHER SIDE, RIGHT OR LEFT.  
2 SERIES NAME & LOT NO. OPTIONAL PRINTED IN WHITE.

1	PPS	BLACK	UL94V-0	3	BERYLLIUM COPPER	CONTACT AREA: Ni1.2µm+Au0.2µm		
NO.	MATERIAL	FINISH	REMARKS	NO.	MATERIAL	TERMINAL AREA: Ni0.6µm+Au0.03µm		
UNITS mm		SCALE FREE	COUNT 	DESCRIPTION OF REVISIONS		DESIGNED	CHECKED	DATE
<b>HRS</b> HIROSE ELECTRIC CO., LTD.		APPROVED : KI. AKIYAMA	08.07.10	DRAWING NO. EDC3-071460-04				
		CHECED : SI. TOMIOKA	08.07.09	PART NO. IC1F-68RD-1.27SFA(52)				
		DESIGNED : NH. SUGITA	08.07.09	CODE NO. CL640-0040-3-52				
		DRAWN : NN. ONDA	08.07.09					

# Mouser Electronics

Authorized Distributor

Click to View Pricing, Inventory, Delivery & Lifecycle Information:

[Hirose Electric:](#)

[IC1F-68RD-1.27SFA\(52\)](#)