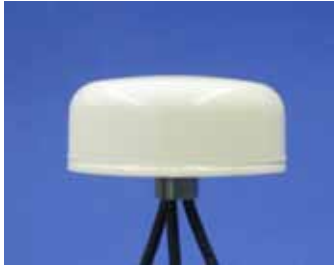


Surface Mount, MIMO Mobile WiFi



3-cables



2-cables

MIMO Low Profile Surface Mount Antennas

- Multiple-Input-Multiple-Output antenna design
- Models with 2 or 3-cables: each cable with identical bandwidth coverage
- Passed Industry and Military shock and vibration standards
- Water ingress rating of IPx7

Many of the newest wireless networks, are moving towards greater use of MIMO (Multiple-Input-Multiple-Output) systems and MIMO Antennas.

MIMO systems, also known as spatial multiplexing, transmit different data on different antenna elements. The net result is greater data throughput and improved bandwidth efficiency.

Mobile Mark's new MIMO Mobile Antenna provides two or three cable feeds, each with identical frequency coverage. Separate antenna elements are housed within a compact rugged radome.

Each element is fed by a different cable; each cable covers the entire bandwidth specified.

This Low Profile Surface Mount Antenna is housed in a rugged, UV Resistant, ASA radome that measures 1.5-inches (38mm) tall x 3.5-inches (89mm) in diameter. Standard configuration is Low Loss RF-195 cable with SMA Plug (Male).

The SMD Antenna will stand up to harsh environments. It has a water ingress rating of IPx7 and has been tested to and passed Industry and Military shock and vibration standards.

Antenna Model Configurator

SMD- example - SMD-W-3C3C3C

Combo Configuration	Cable #1	Cable #2	Cable #3
Code Description	Code Description	Code Description	Code Description
SMD-W	3C RF-195/SMA	3C RF-195/SMA	3C RF-195/SMA
	3A RF-195/TNC	3A RF-195/TNC	3A RF-195/TNC
	3B RF-195/MiniUHF	3B RF-195/MiniUHF	3B RF-195/MiniUHF
	3J RF-195/RevPol SMA	3J RF-195/RevPol SMA	3J RF-195/RevPol SMA
	3K RF-195/RevPol TNC	3K RF-195/RevPol TNC	3K RF-195/RevPol TNC
			Blank - No 3rd Cable

Note: For the 2 cable version, omit the last 2 digits. Example SMD-W-3C3C

Specifications

Frequency: SMD-W	2.4-2.5 & 4.9-6.0 GHz	Weight:	1.0 lbs (.45 kg)
Gain:	4 dBi (peak)	Case Material:	UV resistant ASA
VSWR:	2:1 max over range	Color:	White
Isolation:	>20 dB between elements	Mounting:	Thru-hole, 5/8" wide threaded stud
Impedance:	50 Ohms (nominal)	Mounting Surface:	Up to 1/4" (64 mm) thick metal
Max power:	20 watt	Connectors:	SMA Plug (Male) Standard
Polarization:	Vertical	Operating Temp:	-40 to +85° C
Power:	20 Watts max	Water Ingress:	IPx7 (when properly mounted)
Cables:	RF-195, 15 ft (457 cm)	Shock and Vibration:	EN 61373, IEEE-1478, MIL-810G TIA-329.2-C
Case:	3.5"D x 1.5"H (89 cm x 38 cm)	Water Ingress:	IPx7