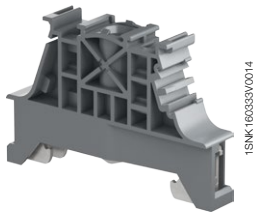


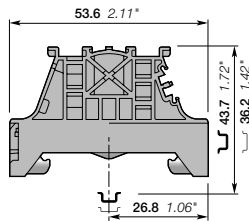
# Screw end stops

## Common terminal block accessories



1SNK160330V0014

**BAM4**



10 mm 0.394 in spacing

### Mounting instructions



## BAM4 screw end stops

### Description

- Give efficient support to the SNK terminal blocks assemblies thanks to the BAM4 double gripping rail contact,
- Ease the assemblies identification with the BAM4 marking location compatible with all SNK markers and labels.

### Ordering details

Description	Color	Type	Order code	Pkg qty	Weight (1 pce) g
10 mm 0.394 in spacing	Dark grey	BAM4	1SNK900001R0000	50	14.00

### Main technical data

Material specifications	Insulating material	Polyamide	Rail		TH 35-7.5, TH 35-15
Flammability	NF F 16 101	I2F2	Tool		Flat screwdriver Ø 5.5 mm Ø 0.217 in
Ambient temperature min/max	Service IEC 60068-2-1	-55 ... +110 °C -67 ... +230 °F	Torque		1.3 Nm ± 0.1 11.4 lb.in ± 0.88
	Storage	-55 ... +110 °C -67 ... +230 °F			
	Installing	-5 ... +40 °C +23 ... +104 °F			

### Mounting instructions

All the main technical data provided are "manufacturer" values

RoHS					
RoHS					

### Accessories

Description	Color	Type	Order code	Pkg qty	Weight (1 pce) g
Terminal block markers compatible with MG3	White	MG-CPM 13 41791	1SNB041791R0612	1680	0.27
Blank card	In polycarbonate	MC812	1SNK160000R0000	22	10.00
	In polyamide	MC812PA	1SNK169999R0000	20	14.00
Label holder	Dark grey	LH	1SNK900605R0000	50	0.60
		LH-R1	1SNK900607R0000	50	1.10
Universal wire markers holder	Grey	UMH	1SNK900611R0000	10	0.20

## BAZH1 screw end stops

### Description

- Give efficient support to the SNK double deck or power terminal blocks assemblies thanks to the BAZH1 double gripping rail contact,
- Ease the assemblies identification with label holders.

### Ordering details

Description	Color	Type	Order code	Pkg qty	Weight (1 pce) g
10 mm 0.394 in spacing	Dark grey	BAZH1	1SNK900102R0000	20	24.00

### Main technical data

Material specifications	Insulating material	Polyamide	Rail		TH 35-7.5
Flammability	NF F 16 101	I2F2	Tool		Flat screwdriver Ø 5.5 mm Ø 0.217 in
Ambient temperature min/max	Service IEC 60068-2-1	-55 ... +110 °C -67 ... +230 °F	Torque		1.3 Nm ± 0.1 11.4 lb.in ± 0.88
	Storage	-55 ... +110 °C -67 ... +230 °F			
	Installing	-5 ... +40 °C +23 ... +104 °F			

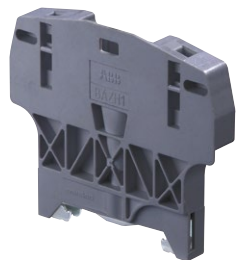
### Mounting instructions

All the main technical data provided are "manufacturer" values

RoHS					
RoHS					

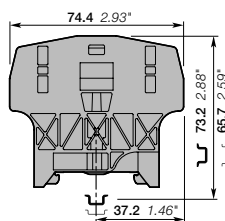
### Accessories

Description	Color	Type	Order code	Pkg qty	Weight (1 pce) g
Label holder	Dark grey	LH	1SNK900605R0000	50	0.60
		LH-R1	1SNK900607R0000	50	1.10



1SNK160094F0014

**BAZH1**



10 mm 0.394 in spacing

All the technical data for UL/CSA standard and dimensions in inches are in italic.  
Technical data valid for copper conductors only.

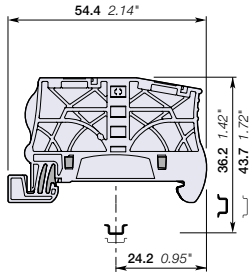
# Screwless end stops

## Common terminal block accessories



1SNK1600160R0014

BAZ1



5.2 mm 0.205 in spacing

### BAZ1 screwless end stops

#### Description

- Reduce the size of your terminal block assemblies with the screwless reduced spacing BAZ1 end stop,
- Ease the assemblies identification with various markers and label holders.

#### Ordering details

Description	Color	Type	Order code	Pkg qty	Weight (1 pce) g
5.2 mm 0.205 in spacing	Dark grey <input checked="" type="checkbox"/>	BAZ1	1SNK900002R0000	50	5.30

#### Main technical data

Material specifications	Insulating material	Polyamide		Rail	TH 35-7.5
	Flammability	V0			
	NF F 16 101	I2F2			
Ambient temperature min/max	Service IEC 60068-2-1	-55 ... +110 °C	-67 ... +230 °F		
	Storage	-55 ... +110 °C	-67 ... +230 °F		
	Installing	-5 ... +40 °C	+23 ... +104 °F		

#### Mounting instructions

All the main technical data provided are "manufacturer" values

RoHS	RoHS	RoHS	RoHS	RoHS	RoHS	RoHS	RoHS	RoHS	RoHS
<input checked="" type="checkbox"/>	<input checked="" type="checkbox"/>	<input checked="" type="checkbox"/>	<input checked="" type="checkbox"/>	<input checked="" type="checkbox"/>	<input checked="" type="checkbox"/>	<input checked="" type="checkbox"/>	<input checked="" type="checkbox"/>	<input checked="" type="checkbox"/>	<input checked="" type="checkbox"/>

#### Accessories

Description	Color	Type	Order code	Pkg qty	Weight (1 pce) g
Terminal block markers compatible with MG3	White <input type="checkbox"/>	MG-CPM 13 41790	1SNB041790R0512	1960	0.23
Blank card compatible with HTP500		MC512	1SNK140000R0000	22	9.00
		MC512PA	1SNK149999R0000	20	10.00
Label holder compatible with AMS600	Dark grey <input checked="" type="checkbox"/>	LH	1SNK900605R0000	50	0.60
		LH-R1	1SNK900607R0000	50	1.10
Universal wire markers holder 5.2 mm 0.205 in spacing	Grey <input type="checkbox"/>	UMH	1SNK900611R0000	10	0.20

All the technical data for UL/CSA standard and dimensions in inches are in italic.  
Technical data valid for copper conductors only.

# Label holder

## Common terminal block accessories



1SNK160334V0014

LH  
10 mm 0.394 in spacing

### LH label holder

#### Description

- Easily identify your terminal blocks assembly with white or yellow labels,
- Adjustable in height for best visibility,
- Compatible with all SNK end stops.

#### Ordering details

Description	Color	Type	Order code	Pkg qty	Weight (1 pce) g
10 mm 0.394 in width	Dark grey <input checked="" type="checkbox"/>	LH	1SNK900605R0000	50	0.60

#### Main technical data

Material specifications	Insulating material	Polyamide			
	Flammability	V0			
	NF F 16 101	I2F2			
Ambient temperature min/max	Service IEC 60068-2-1	-55 ... +110 °C	-67 ... +230 °F		
	Storage	-55 ... +110 °C	-67 ... +230 °F		
	Installing	-5 ... +40 °C	+23 ... +104 °F		

All the main technical data provided are "manufacturer" values

RoHS  
RoHS

#### Accessories

Description	Color	Type	Order code	Pkg qty	Weight (1 pce) g
Self-adhesive precut blank label compatible with HTP500	White <input type="checkbox"/>	MCLH	1SNK900630R0000	25	10.00
Self-adhesive precut blank label compatible with HTP500	White <input type="checkbox"/>	RCPEAD-TT	1SNA235158R0100	25	9.80
	Yellow <input type="checkbox"/>	RCPEAD-TT-YL	1SNA235159R0200	25	12.10
Pre-printed cover marker	Protection for RCPEAD markers: Transparent <input checked="" type="checkbox"/>	EPR2	1SNA399726R0700	10	4.00
Precut blank label compatible with MG3	White <input type="checkbox"/>	MG-TAR 45490	1SNB045490R8530	1650	0.371
		MG-TAR 45194	1SNB045194R1735	900	0.628
Self-adhesive precut blank label compatible with MG3	Yellow <input type="checkbox"/>	MG-TAA 49448	1SNB049448R8530	825	0.55
	White <input type="checkbox"/>	MG-TAA 49498	1SNB049498R8530	825	0.55
Self-adhesive precut blank label compatible with HTP500	Yellow <input type="checkbox"/>	MCLH-YL	1SNK900633R0000	25	10.00



1SNK160335V0014

LH-R1  
19.5 mm 0.768 in spacing

### LH-R1 label holder

#### Description

- Easily identify your terminal blocks assembly with white or yellow labels,
- Adjustable in height for best visibility,
- Compatible with all SNK end stops.

#### Ordering details

Description	Color	Type	Order code	Pkg qty	Weight (1 pce) g
19.5 mm 0.768 in width	Dark grey <input checked="" type="checkbox"/>	LH-R1	1SNK900607R0000	50	1.10

#### Main technical data

Material specifications	Insulating material	Polyamide			
	Flammability	V0			
	NF F 16 101	I2F2			
Ambient temperature min/max	Service IEC 60068-2-1	-55 ... +110 °C	-67 ... +230 °F		
	Storage	-55 ... +110 °C	-67 ... +230 °F		
	Installing	-5 ... +40 °C	+23 ... +104 °F		

All the main technical data provided are "manufacturer" values

RoHS  
RoHS

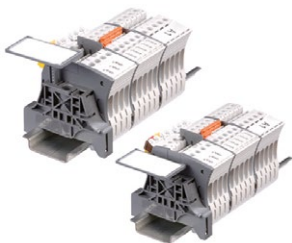
#### Accessories

Description	Color	Type	Order code	Pkg qty	Weight (1 pce) g
Self-adhesive precut blank label compatible with HTP500	White <input type="checkbox"/>	MCLH-R1	1SNK900631R0000	25	10.00
Precut blank label compatible with AMS600	White <input type="checkbox"/>	RCPEB	1SNA178430R0500	1	
	Protection for RCPEB markers: Transparent <input checked="" type="checkbox"/>	EPR1	1SNA178431R2200	1	0.05
Self-adhesive precut blank label compatible with HTP500	White <input type="checkbox"/>	PIB2-TT	1SNA235155R2600	25	9.70
	Yellow <input type="checkbox"/>	PIB2-TT-YL	1SNA235157R2000	25	9.40
Precut blank label compatible with MG3	White <input type="checkbox"/>	MG-TAR 45194	1SNB045194R1735	900	0.62
	Yellow <input type="checkbox"/>	MG-TAA 49148	1SNB049148R1735	450	0.91
Self-adhesive precut blank label	White <input type="checkbox"/>	MG-TAA 49198	1SNB049198R1735	450	0.91
	Yellow <input type="checkbox"/>	MCLH-R1-YL	1SNK900634R0000	25	10.00

All the technical data for UL/CSA standard and dimensions in inches are in *italics*.

Technical data valid for copper conductors only.

### Mounting instructions





# JB5 screwless jumper bars

## Common terminal block accessories



1SNK160143FC014

**JB5**  
5.2 mm 0.205 in spacing

### Description

Facilitate & secure your jumper bar assembly process:

- Screwless mounting,
- Pre-cut poles for alternated jumpering between terminal blocks,
- Insulated,
- Positive locking,
- Perfectly adapted to low level electrical contact (20mA, 50mV).

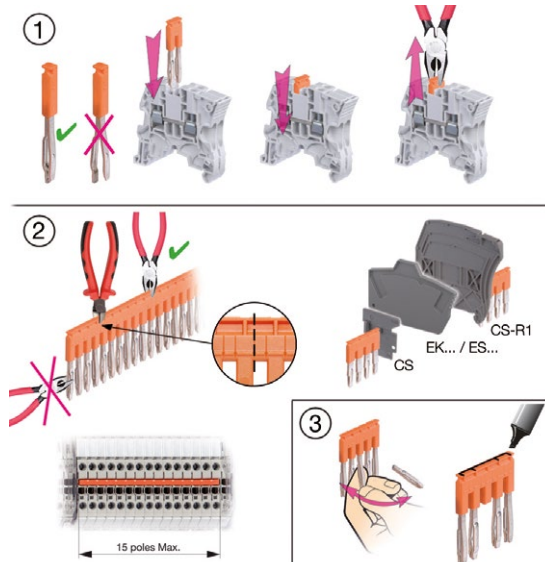
### Ordering details

Description		Color	Type	Order code	Pkg qty	Weight (1 pce) g
5.2 mm 0.205 in spacing	2 poles	Orange	JB5-2	1SNK905302R0000	50	1.30
	3 poles		JB5-3	1SNK905303R0000	50	2.00
	4 poles		JB5-4	1SNK905304R0000	50	2.70
	5 poles		JB5-5	1SNK905305R0000	50	3.50
	10 poles		JB5-10	1SNK905310R0000	30	7.10
	50 poles		JB5-50	1SNK905350R0000	10	36.00

### Main technical data

<b>Material specifications</b>	Insulating material	Polyamide			
	Flammability	V0			
	NF F 16 101	I2F3			
<b>Ambient temperature min/max</b>	Service IEC 60068-2-1	-55 ... +110 °C	-67 ... +230 °F		
	Storage	-55 ... +110 °C	-67 ... +230 °F		
	Installing	-5 ... +40 °C	+23 ... +104 °F		
		<b>IEC</b>	<b>UL - CSA</b>	<b>Ex e</b>	
<b>Rated current</b>		32 A	30 A		
<b>Rated voltage</b>	1 - Standard use	1000 V	600 V	Please consult our dedicated certificates	
	2 - Cut extremities	800 V	300 V		
	3 - Cut poles	400 V	300 V		
<b>Impulse withstand voltage</b>		8000 V			
<b>Protection</b>		IP20	NEMA 1		
All the main technical data provided are "manufacturer" values					
	<b>RoHS</b>				
	RoHS				

### Mounting instructions



#### 1 - Standard use

#### 2 - Cut extremities (for 50 poles jumpers)

For voltage rating > 50 V and Uimp > 2.5 KV, the below accessories must be installed on the cut side of the jumper to guarantee IP20 and voltage rating:

<b>ZS...</b>	Feed-through	CS circuit separator
	Double deck / triple deck	ES... end section
<b>ZK...</b>	All functions	EK... end section

Ensure a good straight cut by positioning the cutting tool on the vertical snicks of the insulated part of the jumper.  
15 poles max. recommended for convenient mounting.

#### 3 - Cut poles

All the technical data for UL/CSA standard and dimensions in inches are in *italics*.  
Technical data valid for copper conductors only.

# JB6 screwless jumper bars

## Common terminal block accessories



1SNK160143F0014

JB6  
6 mm 0.236 in spacing

### Description

Facilitate & secure your jumper bar assembly process:

- Screwless mounting,
- Pre-cut poles for alternated jumpering between terminal blocks,
- Insulated,
- Positive locking,
- Perfectly adapted to low level electrical contact (20mA, 50mV).

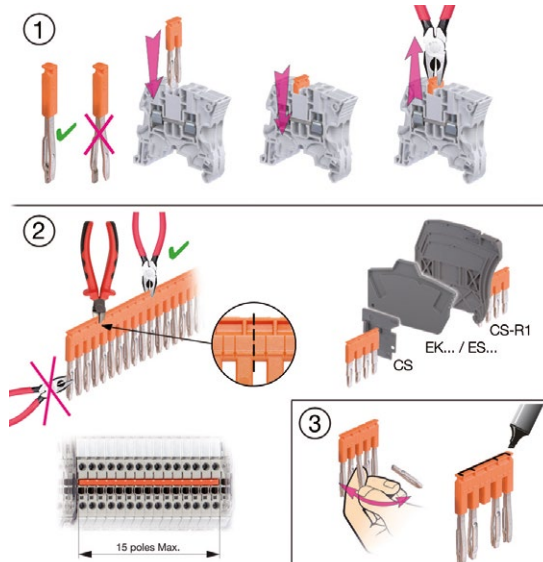
### Ordering details

Description	Color	Type	Order code	Pkg qty	Weight (1 pce) g	
6 mm 0.236 in spacing	Orange	2 poles	JB6-2	1SNK906302R0000	50	1.30
		3 poles	JB6-3	1SNK906303R0000	50	2.10
		4 poles	JB6-4	1SNK906304R0000	50	2.90
		5 poles	JB6-5	1SNK906305R0000	50	3.60
		10 poles	JB6-10	1SNK906310R0000	20	7.40
		50 poles	JB6-50	1SNK906350R0000	10	38.10

### Main technical data

Material specifications	Insulating material	Polyamide		
	Flammability	V0		
Ambient temperature min/max	NF F 16 101	I2F3		
	Service IEC 60068-2-1	-55 ... +110 °C	-67 ... +230 °F	
	Storage	-55 ... +110 °C	-67 ... +230 °F	
	Installing	-5 ... +40 °C	+23 ... +104 °F	
Rated current		IEC	UL - CSA	Ex e
		41 A	30 A	
	Rated voltage	1 - Standard use	1000 V	600 V
	2 - Cut extremities	800 V	300 V	
	3 - Cut poles	400 V	300 V	
Impulse withstand voltage		8000 V		
Protection		IP20	NEMA 1	
All the main technical data provided are "manufacturer" values				
	RoHS			
	RoHS			

### Mounting instructions



#### 1 - Standard use

#### 2 - Cut extremities (for 50 poles jumpers)

For voltage rating > 50 V and Uimp > 2.5 KV, the below accessories must be installed on the cut side of the jumper to guarantee IP20 and voltage rating:

ZS...	Feed-through	CS circuit separator
ZK...	Double deck / triple deck	ES... end section
	All functions	EK... end section

Ensure a good straight cut by positioning the cutting tool on the vertical snicks of the insulated part of the jumper. 15 poles max. recommended for convenient mounting.

#### 3 - Cut poles

All the technical data for UL/CSA standard and dimensions in inches are in italic.  
Technical data valid for copper conductors only.



# JB8 screwless jumper bars

## Common terminal block accessories



1SNK160146P0014

**JB8**  
8 mm 0.315 in spacing

### Description

Facilitate & secure your jumper bar assembly process:

- Screwless mounting,
- Pre-cut poles for alternated jumpering between terminal blocks,
- Insulated,
- Positive locking,
- Perfectly adapted to low level electrical contact (20mA, 50mV).

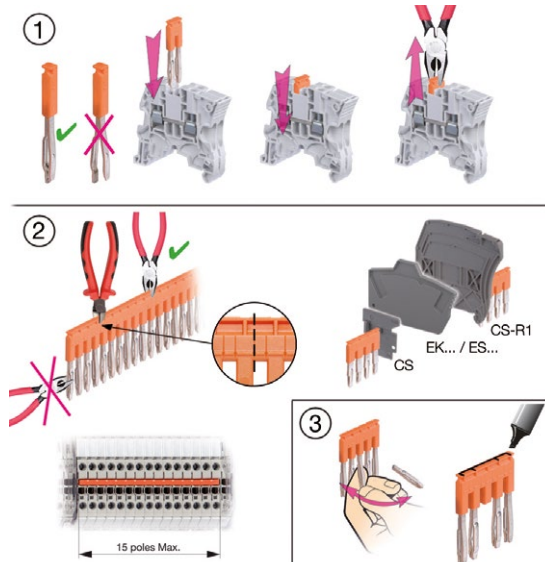
### Ordering details

Description		Color	Type	Order code	Pkg qty	Weight (1 pce) g
8 mm 0.315 in spacing	2 poles	Orange	JB8-2	1SNK908302R0000	50	2.70
	3 poles		JB8-3	1SNK908303R0000	50	4.10
	4 poles		JB8-4	1SNK908304R0000	50	5.60
	5 poles		JB8-5	1SNK908305R0000	40	7.00
	10 poles		JB8-10	1SNK908310R0000	20	14.20

### Main technical data

<b>Material specifications</b>	Insulating material	Polyamide		
	Flammability	V0		
	NF F 16 101	I2F3		
<b>Ambient temperature min/max</b>	Service IEC 60068-2-1	-55 ... +110 °C	-67 ... +230 °F	
	Storage	-55 ... +110 °C	-67 ... +230 °F	
	Installing	-5 ... +40 °C	+23 ... +104 °F	
<b>Rated current</b>		<b>IEC</b> 57 A	<b>UL - CSA</b> 42 A	
<b>Rated voltage</b>	1 - Standard use	1000 V	600 V	Please consult our dedicated certificates
	2 - Cut extremities	800 V	300 V	
	3 - Cut poles	400 V	300 V	
<b>Impulse withstand voltage</b>		6000 V		
<b>Protection</b>		IP20	NEMA 1	
All the main technical data provided are "manufacturer" values				
	RoHS			
	RoHS			

### Mounting instructions



#### 1 - Standard use

#### 2 - Cut extremities (for 50 poles jumpers)

For voltage rating > 50 V and Uimp > 2.5 KV, the below accessories must be installed on the cut side of the jumper to guarantee IP20 and voltage rating:

<b>ZS...</b>	Feed-through	CS circuit separator
	Double deck / triple deck	ES... end section
<b>ZK...</b>	All functions	EK... end section

Ensure a good straight cut by positioning the cutting tool on the vertical snicks of the insulated part of the jumper. 15 poles max. recommended for convenient mounting.

#### 3 - Cut poles

All the technical data for UL/CSA standard and dimensions in inches are in italic.  
Technical data valid for copper conductors only.

# JB10 screwless jumper bars

## Common terminal block accessories



1SNK160146F0014

**JB10**  
10 mm 0.394 in spacing

5

### Description

Facilitate & secure your jumper bar assembly process:

- Screwless mounting,
- Pre-cut poles for alternated jumpering between terminal blocks,
- Insulated,
- Positive locking,
- Perfectly adapted to low level electrical contact (20mA, 50mV).

### Ordering details

Description		Color	Type	Order code	Pkg qty	Weight (1 pce) <b>g</b>
10 mm 0.394 in spacing	2 poles	Orange	JB10-2	1SNK910302R0000	50	4.60
	3 poles		JB10-3	1SNK910303R0000	50	7.10
	4 poles		JB10-4	1SNK910304R0000	40	9.40
	5 poles		JB10-5	1SNK910305R0000	30	12.00
	10 poles		JB10-10	1SNK910310R0000	20	24.00

### Main technical data

<b>Material specifications</b>	Insulating material	Polyamide		
	Flammability	V0		
	NF F 16 101	I2F3		
<b>Ambient temperature min/max</b>	Service IEC 60068-2-1	-55 ... +110 °C	-67 ... +230 °F	
	Storage	-55 ... +110 °C	-67 ... +230 °F	
	Installing	-5 ... +40 °C	+23 ... +104 °F	
<b>Rated current</b>		<b>IEC</b> 76 A	<b>UL - CSA</b> 67 A	<b>Ex e</b>
<b>Rated voltage</b>	1 - Standard use	1000 V	600 V	Please consult our dedicated certificates
	2 - Cut extremities	800 V	300 V	
	3 - Cut poles	400 V	300 V	
<b>Impulse withstand voltage</b>		6000 V		
<b>Protection</b>		IP20	NEMA 1	
All the main technical data provided are "manufacturer" values				
	<b>RoHS</b> RoHS			

### Accessories

Description		Color	Type	Order code	Pkg qty	Weight (1 pce) <b>g</b>
Circuit separators	0 mm 0 in spacing	Dark grey	CS	1SNK900101R0000	20	0.20

### Mounting instructions

**1 - Standard use**

**2 - Cut extremities (for 50 poles jumpers)**

For voltage rating > 50 V and Uimp > 2.5 KV, the below accessories must be installed on the cut side of the jumper to guarantee IP20 and voltage rating:

<b>ZS...</b>	Feed-through	CS circuit separator
	Double deck / triple deck	ES... end section
<b>ZK...</b>	All functions	EK... end section

Ensure a good straight cut by positioning the cutting tool on the vertical snicks of the insulated part of the jumper.  
15 poles max. recommended for convenient mounting.

**3 - Cut poles**

1SNK160031S0201

All the technical data for UL/CSA standard and dimensions in inches are in italic.  
Technical data valid for copper conductors only.



# JB12 screwless jumper bars

## Common terminal block accessories



JB12  
12 mm 0.472 in spacing

### Description

Facilitate & secure your jumper bar assembly process:

- Screwless mounting,
- Pre-cut poles for alternated jumpering between terminal blocks,
- Insulated,
- Positive locking,
- Perfectly adapted to low level electrical contact (20mA, 50mV).

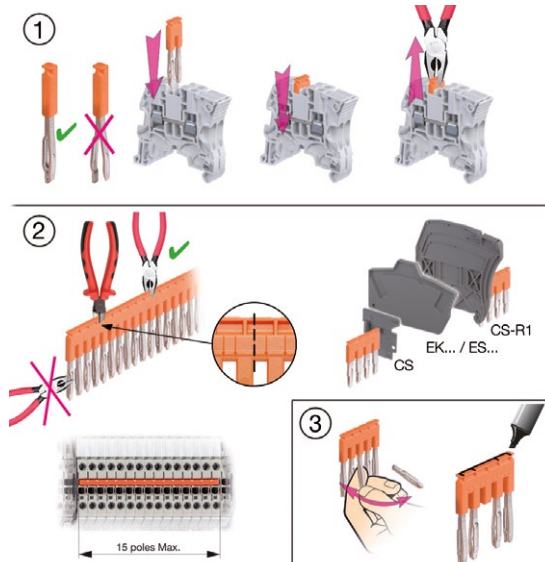
### Ordering details

Description		Color	Type	Order code	Pkg qty	Weight (1 pce) g
12 mm 0.472 in spacing	2 poles	Orange	JB12-2	1SNK912302R0000	50	4.90
	3 poles		JB12-3	1SNK912303R0000	50	7.60
	5 poles		JB12-5	1SNK912305R0000	20	12.90

### Main technical data

Material specifications	Insulating material	Polyamide		
	Flammability	V0		
Ambient temperature min/max	NF F 16 101	I2F2		
	Service IEC 60068-2-1	-55 ... +110 °C	-67 ... +230 °F	
	Storage	-55 ... +110 °C	-67 ... +230 °F	
	Installing	-5 ... +40 °C	+23 ... +104 °F	
		IEC	UL - CSA	Ex e
Rated current		76 A	67 A	
Rated voltage	1 - Standard use	1000 V	600 V	Please consult our dedicated certificates
	2 - Cut extremities	800 V	300 V	
	3 - Cut poles	400 V	300 V	
Impulse withstand voltage		6000 V		
Protection		IP20	NEMA 1	
All the main technical data provided are "manufacturer" values				
	RoHS			
	RoHS			

### Mounting instructions



#### 1 - Standard use

#### 2 - Cut extremities (for 50 poles jumpers)

For voltage rating > 50 V and Uimp > 2.5 KV, the below accessories must be installed on the cut side of the jumper to guarantee IP20 and voltage rating:

ZS...	Feed-through	CS circuit separator
ZK...	Double deck / triple deck	ES... end section
	All functions	EK... end section

Ensure a good straight cut by positioning the cutting tool on the vertical snicks of the insulated part of the jumper.  
15 poles max. recommended for convenient mounting.

#### 3 - Cut poles

All the technical data for UL/CSA standard and dimensions in inches are in italic.  
Technical data valid for copper conductors only.

# JB85-3 cross spacing jumpers

## Common terminal block accessories



1SNK160125F0014

**JB85**  
8 mm 0.315 in spacing

5

### Description

- Allows power distribution between terminal blocks with different spacing,
- JB5-3, JB6-3 and JB8-3 can be used as cross spacing jumpers (see selection table on mounting instructions below).

### Ordering details

Description	Color	Type	Order code	Pkg qty	Weight (1 pce) g
Cross spacing jumpers 3 poles	Orange	JB85-3	1SNK900603R0000	10	2.80

### Main technical data

<b>Material specifications</b>	Insulating material	Polyamide		
	Flammability	V0		
	NF F 16 101	I2F3		
<b>Ambient temperature min/max</b>	Service IEC 60068-2-1	-55 ... +110 °C	-67 ... +230 °F	
	Storage	-55 ... +110 °C	-67 ... +230 °F	
	Installing	-5 ... +40 °C	+23 ... +104 °F	
<b>Rated current</b>		IEC 32 A	UL - CSA 30 A	<b>Ex e</b> Please consult our dedicated certificates
<b>Rated voltage</b>	Standard use	1000 V	600 V	
	Cut extremities	800 V	300 V	
	Cut poles	630 V	300 V	
<b>Impulse withstand voltage</b>		8000 V		
<b>Protection</b>		IP20	NEMA 1	

All the main technical data provided are "manufacturer" values

RoHS

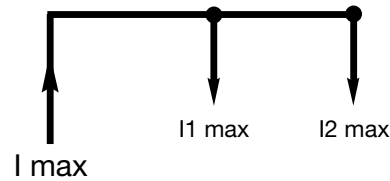
### Mounting instructions

Cross spacing jumper selection between A and B terminal blocks with different spacing.

	B	5.2 mm	6 mm	8 mm
A				
6 mm		JB5.3	-	-
8 mm		JB85.3	JB85.3	-
10 mm		JB85.3	JB85.3	JB8.3
12 mm		JB85.3	JB6.3	-

Yellow cell: for ZS and ZK terminal blocks

Blue cell: for ZS terminal blocks only



$$I1 \text{ max} + I2 \text{ max} \leq I \text{ max}$$

$$I \text{ max} \leq I \text{ rated terminal block}$$

All the technical data for UL/CSA standard and dimensions in inches are in italic.  
Technical data valid for copper conductors only.

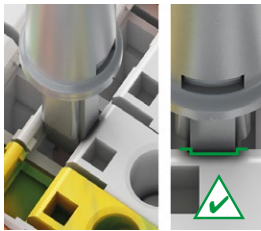
# Test adapters

## Common terminal block accessories



TP  
7.6 mm 0.299 in spacing

### Mounting instructions



## TP2 test adapters

### Description

- Insulated test adapter that enables individual voltage control,
- Direct plug-in solution into the jumpers channels,
- Compatible with standard isolated or non isolated test plugs DIA 2 mm 0.079 in and 2.3 mm 0.090 in,
- Withstand more than 10000 operations according to ABB test standards.

### Ordering details

Description	Color	Type	Order code	Pkg qty	Weight (1 pce)
For test plugs DIA 2 mm 0.079 in	Dark grey ■	TP2	1SNK900203R0000	20	1.70 g

### Main technical data

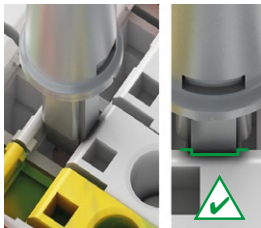
Material specifications	Insulating material	Polyamide		
	Flammability	V0		
	NF F 16 101	I2F2		
Ambient temperature min/max	Service IEC 60068-2-1	-55 ... +110 °C	-67 ... +230 °F	
	Storage	-55 ... +110 °C	-67 ... +230 °F	
	Installing	-5 ... +40 °C	+23 ... +104 °F	
Rated current		IEC 10 A	UL - CSA 600 V	Ex e
Rated voltage	Standard use	1000 V	600 V	Not authorized
Impulse withstand voltage		8000 V		
Protection		IP20	NEMA 1	
All the main technical data provided are "manufacturer" values				
	RoHS			
	RoHS			

5



TP  
7.6 mm 0.299 in spacing

### Mounting instructions



## TP4 test adapters

### Description

- Isolated test adapter that enables individual voltage control,
- Direct plug-in solution into the jumpers channels,
- Compatible with standard isolated or non isolated test plugs DIA 4 mm 0.157 in,
- Withstand more than 10000 operations according to ABB test standards.

### Ordering details

Description	Color	Type	Order code	Pkg qty	Weight (1 pce)
For test plugs DIA 4 mm 0.157 in	Dark grey ■	TP4	1SNK900205R0000	20	2.40 g

### Main technical data

Material specifications	Insulating material	Polyamide		
	Flammability	V0		
	NF F 16 101	I2F2		
Ambient temperature min/max	Service IEC 60068-2-1	-55 ... +110 °C	-67 ... +230 °F	
	Storage	-55 ... +110 °C	-67 ... +230 °F	
	Installing	-5 ... +40 °C	+23 ... +104 °F	
Rated current		IEC 16 A	UL - CSA 600 V	Ex e
Rated voltage	Standard use	1000 V	600 V	Not authorized
Impulse withstand voltage		8000 V		
Protection		IP20	NEMA 1	
All the main technical data provided are "manufacturer" values				
	RoHS			
	RoHS			

All the technical data for UL/CSA standard and dimensions in inches are in italic.  
Technical data valid for copper conductors only.

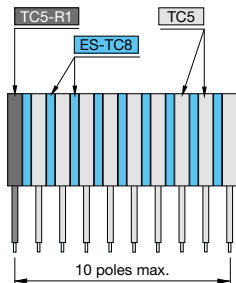
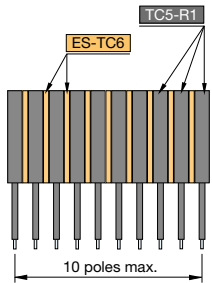
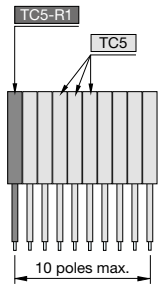
# TC5 test connectors

## Common terminal block accessories



5

5.2 mm 0.205 in spacing



PT-3

### Description

Ease the testing of terminal block assemblies:

- Make your own test connector assembly with our modular solution mixing various spacings,
- Direct plug-in solution into the jumpers channels,
- Withstand more than 10000 operations according to ABB test standards.

### Main technical data

Connecting capacity		IEC	UL - CSA	Mounting instructions			
1 conductor per clamp	Rigid - Solid / Stranded	0.2 ... 1.5 mm <sup>2</sup>		Rail			
	Flexible with non insulated ferrule	0.22 ... 1.5 mm <sup>2</sup>					
	with insulated ferrule	0.22 ... 1.5 mm <sup>2</sup>					
Gauge		A1-B1		Wire stripping length	8 mm 0.314 in		
2 conductors per clamp	Rigid - Solid / Stranded	0.2 ... 0.75 mm <sup>2</sup>				Tool	Flat screwdriver Ø 2.5 mm Ø 0.098 in
	Flexible with twin ferrule	0.22 ... 0.75 mm <sup>2</sup>					
	Rated current / Rated cross section	16 A / 1.5 mm <sup>2</sup>					
Rated short-time withstand current (1s)		180 A		Torque	0.5 Nm ± 0.1 3.43 lb.in ± 0.885		
Rated voltage		1000 V					
Impulse withstand voltage		8000 V					
Protection		IP20	NEMA 1				

The connecting capacity data for one Rigid - Solid / Stranded - Flexible conductor (when applicable) is a mandatory information required by IEC, UL and CSA standards (Copper conductors). All other data are provided as supplementary information only. For more details, please consult our CB, UL or CSA certificates and technical datasheet available on <http://www.ABB.com>

Material specifications	Insulating material	Polyamide	
	Flammability	V0	
	NF F 16 101	I2F2	
Ambient temperature min/max	Service IEC 60068-2-1	-55 ... +110 °C	-67 ... +230 °F
	Storage	-55 ... +110 °C	-67 ... +230 °F
	Installing	-5 ... +40 °C	+23 ... +104 °F

All the main technical data provided are "manufacturer" values

RoHS  
RoHS

### Ordering details

Test connectors for 5.2 mm 0.205 in spacing terminal blocks

Description	Color	Type	Order code	Pkg qty	Weight (1 pce) g
Test connectors 5.2 mm 0.205 in spacing	Dark grey	TC5	1SNK900200R0000	10	5.20
End module, 5.2 mm 0.205 in		TC5-R1	1SNK900201R0000	10	5.20

### Ordering details

Test connectors for 6 mm 0.236 in spacing terminal blocks

Description	Color	Type	Order code	Pkg qty	Weight (1 pce) g
Test connectors End module, 5.2 mm 0.205 in	Dark grey	TC5-R1	1SNK900201R0000	10	5.20
Spacers 0.8 mm 0.031 in spacing		ES-TC6	1SNK900105R0000	10	0.80

### Ordering details

Test connectors for 8 mm 0.315 in spacing terminal blocks

Description	Color	Type	Order code	Pkg qty	Weight (1 pce) g
Test connectors 5.2 mm 0.205 in spacing	Dark grey	TC5	1SNK900200R0000	10	5.20
End module, 5.2 mm 0.205 in		TC5-R1	1SNK900201R0000	10	5.20
Spacers 2.8 mm 0.110 in spacing		ES-TC8	1SNK900104R0000	10	1.40

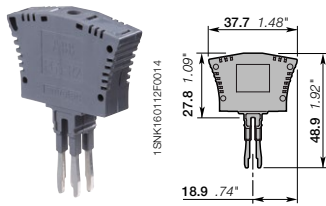
### Accessories

Description	Color	Type	Order code	Pkg qty	Weight (1 pce) g
Cable clamps	Dark grey	PT-3	1SNK900625R0000	20	1.00
Terminal block markers	White	MG-CPM 13 41790	1SNB041790R0512	1960	0.23
		MC512	1SNK140000R0000	22	9.00
		MC512PA	1SNK149999R0000	20	10.00
Universal wire markers holder	Grey	UMH	1SNK900611R0000	10	0.20

All the technical data for UL/CSA standard and dimensions in inches are in italic. Technical data valid for copper conductors only.

# Component plugs

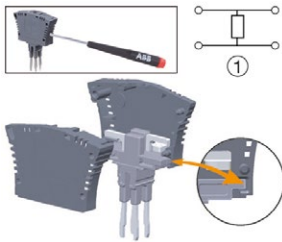
## Common terminal block accessories



PG5

9.95 mm 0.392 in spacing

### Mounting instructions



- Open the PG5-R2 with a flat screwdriver DIA . 3.5 mm 0.138 in,
- Use a soldering iron to fix your component,
- Close the PG5-R2,
- Plug-in in the terminal blocks jumper channels.

## PG5-R2 component plugs

### Description

- Component holder compatible with 5.2 mm 0.205 in spacing ZS4 feed-through terminal blocks,
- Fit components 16 x 16 x 8.5 mm 0.630 x 0.630 x 0.335 in (not supplied with plug) such as resistors, diodes, varistance,
- Direct plug-in into the terminal blocks jumper channels,
- Maximum dissipated power: 2 W.

### Ordering details

Description	Color	Type	Order code	Pkg qty	Weight (1 pce) g
Components insertion between 2 blocks	Dark grey <input checked="" type="checkbox"/>	PG5-R2	1SNK900403R0000	20	8.00

### Main technical data

Material specifications	Insulating material	Polyamide			
	Flammability	V0			
	NF F 16 101	I2F2			
Ambient temperature min/max	Service IEC 60068-2-1	-55 ... +110 °C	-67 ... +230 °F		
	Storage	-55 ... +110 °C	-67 ... +230 °F		
	Installing	-5 ... +40 °C	+23 ... +104 °F		

	IEC	UL - CSA			
Rated current					
Rated voltage	250 V				
Impulse withstand voltage	4000 V				
Protection	IP20	NEMA 1			

All the main technical data provided are "manufacturer" values

RoHS	<input checked="" type="checkbox"/>				
RoHS					

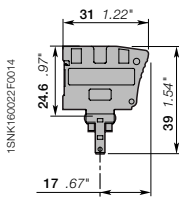
### Accessories

Description	Color	Type	Order code	Pkg qty	Weight (1 pce) g	
Terminal block markers	White <input type="checkbox"/>	MG-CPM 13 41790	1SNB041790R0512	1960	0.23	
Blank card		In polycarbonate	MC512	1SNK140000R0000	22	9.00
		Blank card	MC512PA	1SNK149999R0000	20	10.00
Universal wire markers holder	Grey <input type="checkbox"/>	UMH	1SNK900611R0000	10	0.20	

All the technical data for UL/CSA standard and dimensions in inches are in italic.  
Technical data valid for copper conductors only.

# Component plugs

## Common terminal block accessories



PG5

5.2 mm 0.205 in spacing

### Mounting instructions



- Direct plug-in in disconnect with plug terminal block

## PG5 component plugs

### Description

- Ease the components installation ( components not supplied with plug ) with our quick plug-in mounting system which avoids soldering process,
- Accept 8.8 x 3.2 mm 0.346 x 0.125 in components such as resistors, diodes or subminiature fuses (fully encapsulated),
- Maximum dissipated power: 1 W.

### Ordering details

Description	Color	Type	Order code	Pkg qty	Weight (1 pce)
Components in series with circuit	Dark grey <input checked="" type="checkbox"/>	PG5	1SNK900401R0000	20	3.50

### Main technical data

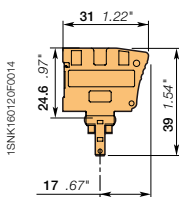
Material specifications	Insulating material	Polyamide	
	Flammability	V0	
	NF F 16 101	I2F2	
Ambient temperature min/max	Service IEC 60068-2-1	-55 ... +110 °C	-67 ... +230 °F
	Storage	-55 ... +110 °C	-67 ... +230 °F
	Installing	-5 ... +40 °C	+23 ... +104 °F
		IEC	UL - CSA
Rated current			
Rated voltage	400 V	150 V	
Impulse withstand voltage	6000 V		
Protection	IP20	NEMA 1	

All the main technical data provided are "manufacturer" values

RoHS

### Accessories

Description	Color	Type	Order code	Pkg qty	Weight (1 pce)
Terminal block markers	White <input type="checkbox"/>	MG-CPM 13 41790	1SNB041790R0512	1960	0.23
Blank card	In polycarbonate	MC512	1SNK140000R0000	22	9.00
		MC512PA	1SNK149999R0000	20	10.00
Universal wire markers holder	Grey <input type="checkbox"/>	UMH	1SNK900611R0000	10	0.20



PG5

5.2 mm 0.205 in spacing

### Mounting instructions



- PG5-R1 totally inserted: closed circuit,
- PG5-R1 inserted in central position: open circuit, plug secured in isolated central position

## PG5-R1 disconnect plugs

### Description

Allow disconnect function when associated with the disconnect with plug terminal blocks.

### Ordering details

Description	Color	Type	Order code	Pkg qty	Weight (1 pce)
Equipped with linking bar	Orange <input checked="" type="checkbox"/>	PG5-R1	1SNK900402R0000	20	3.50

### Main technical data

Material specifications	Insulating material	Polyamide	
	Flammability	V0	
	NF F 16 101	I2F3	
Ambient temperature min/max	Service IEC 60068-2-1	-55 ... +110 °C	-67 ... +230 °F
	Storage	-55 ... +110 °C	-67 ... +230 °F
	Installing	-5 ... +40 °C	+23 ... +104 °F
		IEC	UL - CSA
Rated current	18 A	20 A	
Rated voltage	400 V	150 V	
Impulse withstand voltage	6000 V		
Protection	IP20	NEMA 1	

All the main technical data provided are "manufacturer" values

RoHS

### Accessories

Description	Color	Type	Order code	Pkg qty	Weight (1 pce)	
Blank card	In polycarbonate	White <input type="checkbox"/>	MC512	1SNK140000R0000	22	9.00
			MC512PA	1SNK149999R0000	20	10.00
Universal wire markers holder	Grey <input type="checkbox"/>	UMH	1SNK900611R0000	10	0.20	

All the technical data for UL/CSA standard and dimensions in inches are in italic.  
Technical data valid for copper conductors only.



# Tools

## Common terminal block accessories



TO

1SNK160242F0014

### TO screwdrivers

#### Description

Flat head screwdriver

#### Ordering details

Description	Color	Type	Order code	Pkg qty	Weight (1 pce) g
Insulated screwdriver 1000V IEC dimensions 3.5 x 100 mm 0.138 x 3.94 in		TO3.5-100-INS	1SNK900644R0000	1	37.00
screwdriver 3.5 x 50 mm 0.138 x 1.97 in		TO3.5-50	1SNK900640R0000	12	22.00
screwdriver 3.5 x 50 mm 0.138 x 1.97 in Angled 60°		TO3.5-50-A	1SNK900659R0000	12	21.6
screwdriver 4 x 100 mm 0.157 x 3.94 in		TO4-100	1SNK900641R0000	1	42.00
screwdriver 5.5 x 125 mm 0.216 x 4.92 in		TO5.5-125	1SNK900642R0000	1	75.50
screwdriver 6.5 x 150 mm 0.256 x 5.90 in		TO6.5-150	1SNK900643R0000	1	121.00



PS

1SNK160127F0014

### PS crimping tools

#### Description

- Crimp flexible conductors equipped with ferrules from 0.08 to 10 mm<sup>2</sup> 28 AWG to 7 AWG,
- Semi-automatic crimping tool.

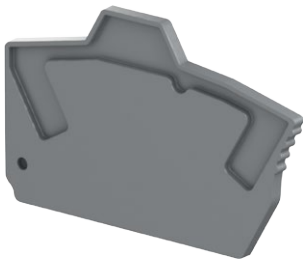
#### Ordering details

Description	Color	Type	Order code	Pkg qty	Weight (1 pce) g
180 mm 7.09 in length		PS-3	1SNK900650R0000	1	380.00

All the technical data for UL/CSA standard and dimensions in inches are in italic.  
Technical data valid for copper conductors only.

# End sections

## PI-Spring terminal block accessories



1SNK160233W0014

EK2.5

### EK2.5 end sections

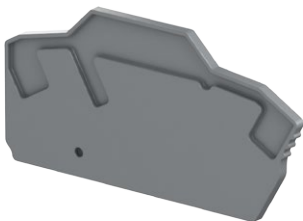
#### Description

- Unique dark grey color that fits all terminal blocks colours and ease the identification of circuits within your terminal block assemblies,
- Compatible with ZK2.5, ZK2.5-PE, ZK4, ZK4-PE, ZK6 and ZK6-PE PI-Spring screwless terminal blocks.

#### Ordering details

Description	Color	Type	Order code	Pkg qty	Weight (1 pce) g
2 mm 0.079 in spacing	Dark grey	EK2.5	1SNK705910R0000	20	1.80

5



1SNK160234W0014

EK2.5-3P

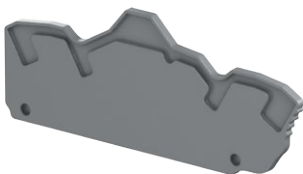
### EK2.5-3P end sections

#### Description

- Unique dark grey color that fits all terminal blocks colours and ease the identification of circuits within your terminal block assemblies,
- Compatible with ZK2.5-3P, ZK2.5-PE-3P, ZK4-3P, ZK4-PE-3P, ZK2.5-S..., ZK2.5-SP and ZK2.5-SF... PI-Spring screwless terminal blocks.

#### Ordering details

Description	Color	Type	Order code	Pkg qty	Weight (1 pce) g
2 mm 0.079 in spacing	Dark grey	EK2.5-3P	1SNK705911R0000	20	2.40



1SNK160235W0014

EK2.5-4P

### EK2.5-4P end sections

#### Description

- Unique dark grey color that fits all terminal blocks colours and ease the identification of circuits within your terminal block assemblies,
- Compatible with ZK2.5-4P, ZK2.5-PE-4P, ZK4-4P and ZK4-PE-4P PI-Spring screwless terminal blocks.

#### Ordering details

Description	Color	Type	Order code	Pkg qty	Weight (1 pce) g
2 mm 0.079 in spacing	Dark grey	EK2.5-4P	1SNK705912R0000	20	2.70

### Main technical data

Material specifications	Insulating material	Polyamide		
	Flammability	V0		
	NF F 16 101	I2F2		
Ambient temperature min/max	Service IEC 60068-2-1	-55 ... +110 °C	-67 ... +230 °F	
	Storage	-55 ... +110 °C	-67 ... +230 °F	
	Installing	-5 ... +40 °C	+23 ... +104 °F	

All the main technical data provided are "manufacturer" values.

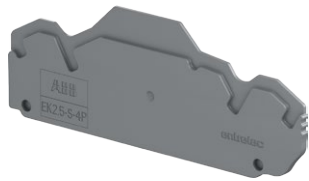
RoHS

All the technical data for UL/CSA standard and dimensions in inches are in italic.  
Technical data valid for copper conductors only.

1SNK160064S0201

# End sections

## PI-Spring terminal block accessories



1SNK16039V0014

EK2.5-S-4P

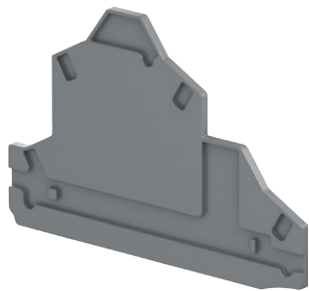
### EK2.5-S-4P end sections

#### Description

- Unique dark grey color that fits all terminal blocks colours and ease the identification of circuits within your terminal block assemblies,
- Compatible with ZK2.5-S-4P, ZK2.5-SP-4P, ZK2.5-CH-4P... PI-Spring screwless terminal blocks.

#### Ordering details

Description	Color	Type	Order code	Pkg qty	Weight (1 pce) g
2 mm 0.079 in spacing	Dark grey	EK2.5-S-4P	1SNK705913R0000	20	2.94



1SNK16023V0014

EK2.5-D2

### EK2.5-D2 end sections

#### Description

- Compatible with ZK2.5-D2, ZK2.5-D2-PE, ZK2.5-D1 and ZK2.5-D1-PE PI-Spring screwless terminal blocks.

#### Ordering details

Description	Color	Type	Order code	Pkg qty	Weight (1 pce) g
2 mm 0.079 in spacing	Dark grey	EK2.5-D2	1SNK705960R0000	20	3.40



1SNK16034B0014

EK2.5-T3

### EK2.5-T3 end sections

#### Description

- Compatible with ZK2.5-T3, ZK2.5-T1, ZK2.5-T1-PE, ZK2.5-L-L-PE and ZK2.5-L-N-PE PI-Spring screwless terminal blocks.

#### Ordering details

Description	Color	Type	Order code	Pkg qty	Weight (1 pce) g
0.8 mm 0.031 in spacing	Dark grey	EK2.5-T3	1SNK705961R0000	20	4.76

### Main technical data

Material specifications	Insulating material	Polyamide			
	Flammability	V0			
	NF F 16 101	I2F2			
Ambient temperature min/max	Service IEC 60068-2-1	-55 ... +110 °C	-67 ... +230 °F		
	Storage	-55 ... +110 °C	-67 ... +230 °F		
	Installing	-5 ... +40 °C	+23 ... +104 °F		

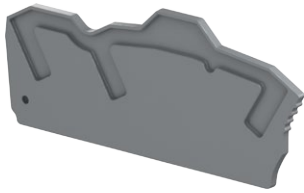
All the main technical data provided are "manufacturer" values.

	RoHS									
	RoHS									

All the technical data for UL/CSA standard and dimensions in inches are in italic.  
 Technical data valid for copper conductors only.

# End sections

## PI-Spring terminal block accessories



1SNK160236V0014

EK6-3P

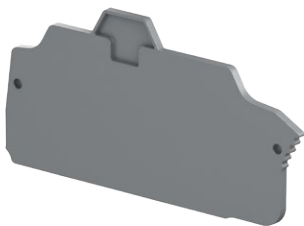
### EK6-3P end sections

#### Description

– Compatible with ZK6-3P and ZK6-PE-3P PI-Spring screwless terminal blocks.

#### Ordering details

Description	Color	Type	Order code	Pkg qty	Weight (1 pce) g
2 mm 0.079 in spacing	Dark grey	EK6-3P	1SNK708911R0000	20	2.80



1SNK160238V0014

EK10

### EK10 end sections

#### Description

– Compatible with ZK10, ZK10-PE, ZK16 and ZK16-PE PI-Spring screwless terminal blocks.

#### Ordering details

Description	Color	Type	Order code	Pkg qty	Weight (1 pce) g
2 mm 0.079 in spacing	Dark grey	EK10	1SNK710910R0000	20	3.30



1SNK160318V0014

EK10-3P

### EK10-3P end sections

#### Description

– Unique dark grey color that fits all terminal blocks colours and ease the identification of circuits within your terminal block assemblies,

– Compatible with ZK10-3P, ZK10-PE-3P, ZK16-3P, ZK16-PE-3P... PI-Spring screwless terminal blocks.

#### Ordering details

Description	Color	Type	Order code	Pkg qty	Weight (1 pce) g
2 mm 0.079 in spacing	Dark grey	EK10-3P	1SNK710911R0000	20	4.5

### Main technical data

Material specifications	Insulating material	Polyamide			
	Flammability	V0			
	NF F 16 101	I2F2			
Ambient temperature min/max	Service IEC 60068-2-1	-55 ... +110 °C	-67 ... +230 °F		
	Storage	-55 ... +110 °C	-67 ... +230 °F		
	Installing	-5 ... +40 °C	+23 ... +104 °F		

All the main technical data provided are "manufacturer" values.

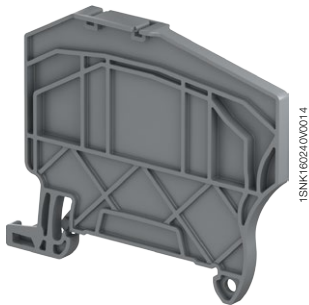
RoHS

All the technical data for UL/CSA standard and dimensions in inches are in italic.  
Technical data valid for copper conductors only.

1SNK160065S0201

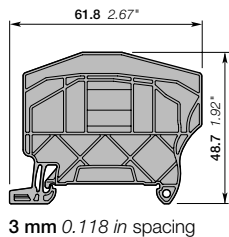
# Circuit separators

## PI-Spring terminal blocks accessories



1SNK1602400014

CS-R2



3 mm 0.118 in spacing

### CS-R2 circuit separators

#### Description

- Compact circuits separator solution (only 3mm spacing) which provides a convenient visual identification of the several circuits within terminal assemblies,
- Unique top marking possibility that can replace the conventional solution of "end stop with label holder" for demanding applications with high space constraints, - Compatible with all PI-spring feed-through and ground terminal blocks up to 8 mm spacing,
- Mounting on DIN3-TH35 rail.

#### Ordering details

Description	Color	Type	Order code	Pkg qty	Weight (1 pce) g
3 mm 0.118 in spacing	Dark grey	CS-R2	1SNK900106R0000	20	3.80

#### Main technical data

Material specifications	Insulating material	Polyamide			
	Flammability	V0			
	NF F 16 101	I2F2			
Ambient temperature min/max	Service IEC 60068-2-1	-55 ... +110 °C	-67 ... +230 °F		
	Storage	-55 ... +110 °C	-67 ... +230 °F		
	Installing	-5 ... +40 °C	+23 ... +104 °F		
All the main technical data provided are "manufacturer" values					
	RoHS	RoHS			

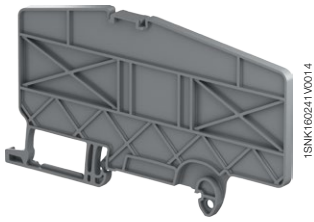
#### Accessories

Description	Color	Type	Order code	Pkg qty	Weight (1 pce) g
Terminal block markers	White	MG-CPM 13 41791	1SNB041791R0612	1680	0.27
Labels	Yellow	MG-VYT 46415	1SNB046415R0615	5250	0.04
Blank card	White	MG-VYT 46915	1SNB046915R0615	5250	0.05
	White	MC612	1SNK150000R0000	22	10.00
Blank card		MC612PA	1SNK159999R0000	20	11.00
Universal wire markers holder 5.2 mm 0.205 in spacing	Grey	UMH	1SNK900611R0000	10	0.20

All the technical data for UL/CSA standard and dimensions in inches are in italic.  
 Technical data valid for copper conductors only.

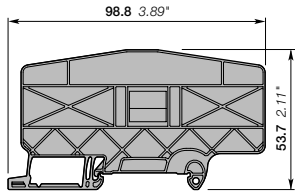
# Circuit separators

## PI-Spring terminal blocks accessories



1SNK160241Y0014

CS-R3



3 mm 0.118 in spacing

### CS-R3 circuit separators

#### Description

- Compact circuits separator solution (only 3mm spacing) which provides a convenient visual identification of the several circuits within terminal assemblies,
- Unique top marking possibility that can replace the conventional solution of "end stop with label holder" for demanding applications with high space constraints,
- Compatible with all single deck PI-spring terminal blocks and ZS10-ST...terminal blocks ,
- Mounting on DIN3-TH35 rail.

#### Ordering details

Description	Color	Type	Order code	Pkg qty	Weight (1 pce) g
3 mm 0.118 in spacing	Dark grey <input checked="" type="checkbox"/>	CS-R3	1SNK900107R0000	20	6.40

#### Main technical data

<b>Material specifications</b>	Insulating material	Polyamide			
	Flammability	V0			
	NF F 16 101	I2F2			
<b>Ambient temperature min/max</b>	Service IEC 60068-2-1	-55 ... +110 °C	-67 ... +230 °F		
	Storage	-55 ... +110 °C	-67 ... +230 °F		
	Installing	-5 ... +40 °C	+23 ... +104 °F		

All the main technical data provided are "manufacturer" values

RoHS   
RoHS

#### Accessories

Description	Color	Type	Order code	Pkg qty	Weight (1 pce) g	
Terminal block markers	White <input type="checkbox"/>	MG-CPM 13 41790	1SNB041790R0512	1960	0.23	
		MG-CPM 13 41791	1SNB041791R0612	1680	0.27	
Labels	Yellow <input checked="" type="checkbox"/>	MG-VYT 46415	1SNB046415R0615	5250	0.04	
	White <input type="checkbox"/>	MG-VYT 46915	1SNB046915R0615	5250	0.05	
Blank card	White <input type="checkbox"/>	In polycarbonate	MC512	1SNK140000R0000	22	9.00
		Blank card	MC512PA	1SNK149999R0000	20	10.00
		In polycarbonate	MC612	1SNK150000R0000	22	10.00
		Blank card	MC612PA	1SNK159999R0000	20	11.00
Universal wire markers holder 5.2 mm 0.205 in spacing	Grey <input type="checkbox"/>	UMH	1SNK900611R0000	10	0.20	

All the technical data for UL/CSA standard and dimensions in inches are in italic.  
Technical data valid for copper conductors only.



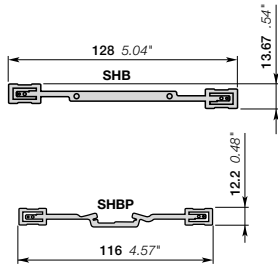
# Shield connectors

## PI-Spring terminal block accessories



SHBP/SHB

1SNK160067R0014



### SHBP/SHB shield connectors for PI-Spring terminal blocks

#### Description

- Ensure the continuity of your shield connection,
- Various connection solutions available: RILS cable ties, soldering, quick-connect.

#### Ordering details

Description	Color	Type	Order code	Pkg qty	Weight (1 pce) g
Compatible with ZK2.5 and ZK2.5-S terminal blocks		SHBP	1SNK900601R0000	20	4.10
Compatible with ZS and ZK double deck terminal blocks		SHB	1SNK900602R0000	20	4.90

#### Main technical data

Material specifications	Insulating material				
	Flammability				
	NF F 16 101				
Ambient temperature min/max	Service IEC 60068-2-1	-55 ... +110 °C	-67 ... +230 °F		
	Storage	-55 ... +110 °C	-67 ... +230 °F		
	Installing	-5 ... +40 °C	+23 ... +104 °F		
SHBP	IEC	UL - CSA	Ex e		
Rated voltage	100 V		50 V		
All the main technical data provided are "manufacturer" values					
	RoHS				
	RoHS				

5

#### Accessories for screw clamp and PI-Spring terminal blocks

Description	Color	Type	Order code	Pkg qty	Weight (1 pce) g
Cable ties		RILS	1SNK900627R0000	10	0.30

#### Mounting instructions



- SHBS is directly fixed on the terminal block,
- SHB is fixed on the ES4-D2 end section,
- SHBP is directly fixed on the terminal block,
- Connect the cable shielding on the shielding connector with:
  - RILS cable ties,
  - quick-connect (the shield connector needs to be prepared),
  - soldering iron.

All the technical data for UL/CSA standard and dimensions in inches are in italic.  
Technical data valid for copper conductors only.

# End sections

## Screw clamp terminal block accessories



1SNK161013F0014

### ES4 end sections

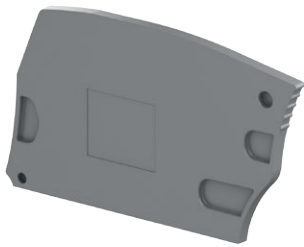
#### Description

- Unique dark grey color that fits all terminal blocks colours and ease the identification of circuits within your terminal block assemblies,
- Compatible with feed-through, ground and disconnect screw clamp terminal blocks.

#### Ordering details

Description	Color	Type	Order code	Pkg qty	Weight (1 pce) g
2.2 mm 0.087 in spacing	Dark grey	ES4	1SNK505910R0000	20	2.20

ES4



1SNK160223V0014

### ES6-3S end sections

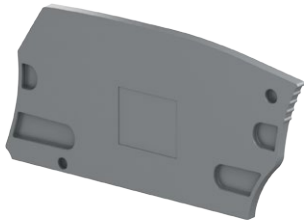
#### Description

- Compatible with ZS6-3S and ZS6-3S-PE terminal blocks.

#### Ordering details

Description	Color	Type	Order code	Pkg qty	Weight (1 pce) g
2.2 mm 0.087 in spacing	Dark grey	ES6-3S	1SNK505912R0000	20	2.50

ES6-3S



1SNK160230V0014

### ES6-4S end sections

#### Description

- Compatible with ZS6-4S, ZS6-4S-PE, ZS6-S-4S-T2 and ZS4-PE-R2 terminal blocks.

#### Ordering details

Description	Color	Type	Order code	Pkg qty	Weight (1 pce) g
2.2 mm 0.087 in spacing	Dark grey	ES6-4S	1SNK505911R0000	20	3.10

ES6-4S



1SNK161012F0014

### ES4-D2 end sections

#### Description

- Unique dark grey color that fits all terminal blocks colours and ease the identification of circuits within your terminal block assemblies,
- Compatible with double deck screw clamp terminal blocks

#### Ordering details

Description	Color	Type	Order code	Pkg qty	Weight (1 pce) g
2.55 mm 0.100 in spacing	Dark grey	ES4-D2	1SNK505960R0000	20	4.10

ES4-D2

### Main technical data

<b>Material specifications</b>	Insulating material	Polyamide			
	Flammability	V0			
	NF F 16 101	I2F2			
<b>Ambient temperature min/max</b>	Service IEC 60068-2-1	-55 ... +110 °C	-67 ... +230 °F		
	Storage	-55 ... +110 °C	-67 ... +230 °F		
	Installing	-5 ... +40 °C	+23 ... +104 °F		

All the main technical data provided are "manufacturer" values.

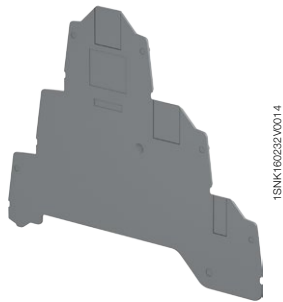
RoHS

All the technical data for UL/CSA standard and dimensions in inches are in italic.  
Technical data valid for copper conductors only.

1SNK160061S0201

# End sections

## Screw clamp terminal block accessories



1SNK160232V0014

ES4-T3

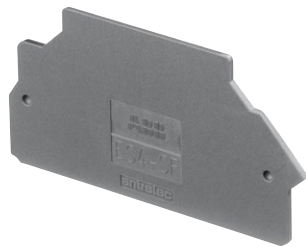
### ES4-T3 end sections

#### Description

- Compatible with ZS4-T3 terminal block.

#### Ordering details

Description	Color	Type	Order code	Pkg qty	Weight (1 pce)
0.8 mm 0.031 in spacing	Dark grey	ES4-T3	1SNK505961R0000	20	4.20



1SNK161026R0014

ES4-SF

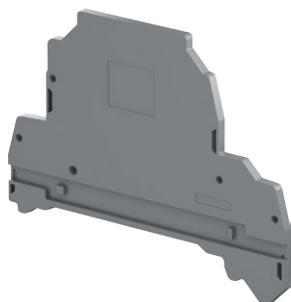
### ES4-SF end sections

#### Description

- Compatible with fuse ZS4-SF1... and disconnect screw clamp terminal blocks ZS4-S-R3.

#### Ordering details

Description	Color	Type	Order code	Pkg qty	Weight (1 pce)
1.5 mm 0.059 in spacing	Dark grey	ES4-SF	1SNK508960R0000	20	1.80



1SNK160231V0014

ES4-D2-SF1

### ES4-D2-SF1 end sections

#### Description

- Compatible with ZS4-D2-SF1 ... terminal blocks.

#### Ordering details

Description	Color	Type	Order code	Pkg qty	Weight (1 pce)
2.5 mm 0.098 in spacing	Dark grey	ES4-D2-SF1	1SNK508911R0000	20	5.00



1SNK161072F0014

ES10-ST

### ES10-ST end sections

#### Description

- Unique dark grey color that fits all test disconnect terminal blocks ZS10-ST... and ease the identification of circuits within your terminal block assemblies,
- Also compatible with ZS10-R1 and ZS10-PE-R1.

#### Ordering details

Description	Color	Type	Order code	Pkg qty	Weight (1 pce)
2 mm 0.079 in spacing	Dark grey	ES10-ST	1SNK508910R0000	20	3.5

#### Accessories

Description	Color	Type	Order code	Pkg qty	Weight (1 pce)
Circuit separators	Dark grey	CS	1SNK900101R0000	20	0.20

#### Main technical data

Material specifications	Insulating material	Polyamide			
	Flammability	V0			
	NF F 16 101	I2F2			
Ambient temperature min/max	Service IEC 60068-2-1	-55 ... +110 °C	-67 ... +230 °F		
	Storage	-55 ... +110 °C	-67 ... +230 °F		
	Installing	-5 ... +40 °C	+23 ... +104 °F		

All the main technical data provided are "manufacturer" values.

RoHS  
RoHS

All the technical data for UL/CSA standard and dimensions in inches are in italic.

Technical data valid for copper conductors only.

# Screw jumper bars

## Screw clamp terminal block accessories



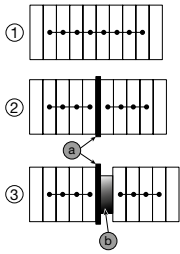
1SNK160212P0014

JB8

8 mm 0.315 in spacing

5

### Mounting instructions



1 - Rated voltage: 160 V (IEC) / Not authorized (UL)

2 - Rated voltage: 320 V (IEC) / Not authorized (UL)

3 - Rated voltage: 1000 V (IEC) / 300 V (UL)

a - End section ES10-ST

b - End stop BAZ1

## JB8 jumper bars

### Description

Insulated jumper bar with screw mounting.

### Ordering details

Description		Color	Type	Order code	Pkg qty	Weight (1 pce)
8 mm 0.315 in spacing	2 poles	Orange	JB8-2-R1	1SNK908902R0000	10	7.6
	3 poles		JB8-3-R1	1SNK908903R0000	10	11.6
	4 poles		JB8-4-R1	1SNK908904R0000	10	15.5
	5 poles		JB8-5-R1	1SNK908905R0000	10	19.4
	10 poles		JB8-10-R1	1SNK908910R0000	10	39.00

### Main technical data

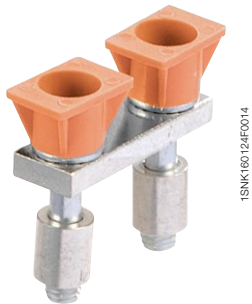
Material specifications	Insulating material	Polyamide		Rail	
	Flammability	V0		Tool	Flat screwdriver Ø 3.5 mm Ø 0.138 in
	NF F 16 101	I2F3			
Ambient temperature min/max	Service IEC 60068-2-1	-55 ... +110 °C	-67 ... +230 °F	Torque	0.7 Nm ± 0.1 6.2 lb.in ± 0.88
	Storage	-55 ... +110 °C	-67 ... +230 °F		
	Installing	-5 ... +40 °C	+23 ... +104 °F		
Rated current		IEC	UL - CSA	Ex e	
Rated voltage	Standard use	50 A		51 A	
		160 V			
Impulse withstand voltage	Alternated poles			Not authorized	
Protection		IP20	NEMA 1		

All the main technical data provided are "manufacturer" values

RoHS  
RoHS

# Screw jumper bars

## Screw clamp terminal block accessories



1SNK160124F0014

**JB16**  
16 mm 0.630 in spacing

### Mounting instructions



- With flat pliers, cut out the partitions on the terminal block insulating body. Be careful to not cut out the jumpered terminal blocks partitions at both ends of the assembly in order to maintain the IP20, Nema1 protection and insulation,
- Install the jumper bar with the recommended tool and torque.

## JB16 jumper bars

### Description

Insulated jumper bar with screw mounting.

### Ordering details

Description		Color	Type	Order code	Pkg qty	Weight (1 pce) g
16 mm 0.630 in spacing	2 poles	Orange	JB16-2	1SNK916302R0000	10	10.00
	3 poles		JB16-3	1SNK916303R0000	10	16.00
	4 poles		JB16-4	1SNK916304R0000	10	22.00
	5 poles		JB16-5	1SNK916305R0000	10	28.00
	10 poles		JB16-10	1SNK916310R0000	10	56.80

### Main technical data

Material specifications	Insulating material	Polyamide		Rail		
	Flammability	V0		Tool		Flat screwdriver Ø 5.5 mm Ø 0.217 in
Ambient temperature min/max	Service IEC 60068-2-1	-55 ... +110 °C	-67 ... +230 °F	Torque		1.2 Nm ± 0.1 10.6 lb.in ± 0.885
	Storage	-55 ... +110 °C	-67 ... +230 °F			
	Installing	-5 ... +40 °C	+23 ... +104 °F			
Rated current		IEC 125 A	UL - CSA 150 A	Ex e		
Rated voltage	Standard use	1000 V	600 V			
		Alternated poles			Not authorized	
Impulse withstand voltage		8000 V				
Protection		IP20	NEMA 1			

All the main technical data provided are "manufacturer" values

	RoHS					
	RoHS					

## JB22 jumper bars

### Description

Screw jumper bars

### Ordering details

Description		Color	Type	Order code	Pkg qty	Weight (1 pce) g
22 mm 0.866 in spacing	2 poles		JB22-2	1SNK922302R0000	5	27.00
	3 poles		JB22-3	1SNK922303R0000	5	43.30
	5 poles		JB22-5	1SNK922305R0000	5	76.10
	10 poles		JB22-10	1SNK922310R0000	5	157.40

### Main technical data

Material specifications	Insulating material	Polyamide		Rail		
	Flammability	V0		Tool		Allen key Ø 4 mm Ø 0.157 in
Ambient temperature min/max	Service IEC 60068-2-1	-55 ... +110 °C	-67 ... +230 °F	Torque		2 Nm ± 0.4 17.7 lb.in ± 3.54
	Storage	-55 ... +110 °C	-67 ... +230 °F			
	Installing	-5 ... +40 °C	+23 ... +104 °F			
Rated current		IEC 192 A	UL - CSA 175 A	Ex e		
Rated voltage	Standard use	1000 V	600 V	630 V		
		Alternated poles			Not authorized	
Impulse withstand voltage		8000 V				
Protection		IP20				

All the main technical data provided are "manufacturer" values

	RoHS					
	RoHS					

All the technical data for UL/CSA standard and dimensions in inches are in *italics*.  
Technical data valid for copper conductors only.

**JB22**  
22 mm 0.866 in spacing

### Mounting instructions



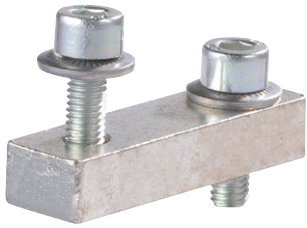
- With flat pliers, cut out the partitions on the terminal block insulating body. Be careful to not cut out the jumpered terminal blocks partitions at both ends of the assembly in order to maintain the IP20, Nema1 protection and insulation,
- Install the jumper bar with the recommended tool and torque.





# Screw jumper bars

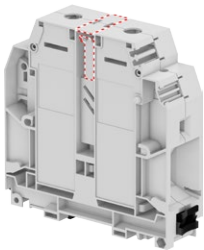
## Screw clamp terminal block accessories



1SNK160100F0014

**BJMI31**  
31 mm 1.22 in spacing

### Mounting instructions



- With flat pliers, cut out the partitions on the terminal block insulating body. Be careful to not cut out the jumpered terminal blocks partitions at both ends of the assembly in order to maintain the IP20, Nema1 protection and insulation,
- Install the jumper bar with the recommended tool and torque.

## BJMI31 jumper bars

### Description

Screw jumper bars

### Ordering details

Description		Color	Type	Order code	Pkg qty	Weight (1 pce) g
31mm 1.220 in spacing	2 poles		BJMI31.2	1SNA206053R0700	1	120.00
	3 poles		BJMI31.3	1SNA206054R0000	1	190.00

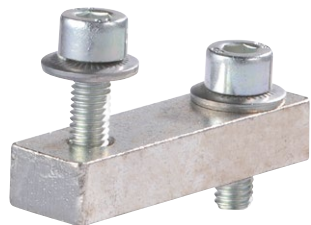
### Main technical data

<b>Material specifications</b>	Insulating material			Rail		
	Flammability			Tool		Allen key Ø 5 mm Ø 0.196 in
	NF F 16 101			Torque		3 Nm ± 0.4 26.55 lb.in ± 3.54
<b>Ambient temperature min/max</b>	Service IEC 60068-2-1	-55 ... +110 °C	-67 ... +230 °F			
	Storage	-55 ... +110 °C	-67 ... +230 °F			
	Installing	-5 ... +40 °C	+23 ... +104 °F			
<b>Rated current</b>		<b>IEC</b> 309 A	<b>UL - CSA</b> 445 A	<b>Ex e</b>		
<b>Rated voltage</b>	Standard use	1000 V	600 V			
		Alternated poles		Not authorized		
<b>Impulse withstand voltage</b>		8000 V				
<b>Protection</b>		IP20				

All the main technical data provided are "manufacturer" values

	RoHS					
	RoHS					

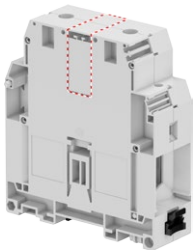
5



1SNK160100F0014

**BJMI36**  
36 mm 1.42 in spacing

### Mounting instructions



- With flat pliers, cut out the partitions on the terminal block insulating body. Be careful to not cut out the jumpered terminal blocks partitions at both ends of the assembly in order to maintain the IP20, Nema1 protection and insulation,
- Install the jumper bar with the recommended tool and torque.

## BJMI36 jumper bars

### Description

Screw jumper bars

### Ordering details

Description		Color	Type	Order code	Pkg qty	Weight (1 pce) g
36mm 1.417 in spacing	2 poles		BJMI36.2	1SNA206126R2500	1	170.00
	3 poles		BJMI36.3	1SNA206223R0600	1	260.00

### Main technical data

<b>Material specifications</b>	Insulating material			Rail		
	Flammability			Tool		Allen key Ø 5 mm Ø 0.196 in
	NF F 16 101			Torque		3 Nm ± 0.4 26.55 lb.in ± 3.54
<b>Ambient temperature min/max</b>	Service IEC 60068-2-1	-55 ... +110 °C	-67 ... +230 °F			
	Storage	-55 ... +110 °C	-67 ... +230 °F			
	Installing	-5 ... +40 °C	+23 ... +104 °F			
<b>Rated current</b>		<b>IEC</b> 415 A	<b>UL - CSA</b> 620 A	<b>Ex e</b>		
<b>Rated voltage</b>	Standard use	1000 V	600 V			
		Alternated poles		Not authorized		
<b>Impulse withstand voltage</b>		8000 V				
<b>Protection</b>		IP20				

All the main technical data provided are "manufacturer" values

	RoHS					
	RoHS					

All the technical data for UL/CSA standard and dimensions in inches are in italic.  
Technical data valid for copper conductors only.

1SNK16009750201

# Lateral jumper bars

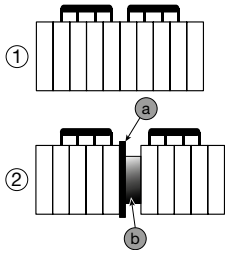
## Screw clamp terminal block accessories



1SNC160112F0014

**PC8**  
8 mm 0.315 in spacing

### Mounting instructions for ZS10-ST...



- 1 - Rated voltage: 630 V (IEC) / 150 V (UL)  
 2 - Rated voltage: 630 V (IEC) / 300 V (UL)  
 a - End section ES10-ST  
 b - End stop BAZ1

## PC8 lateral jumper bars

### Description

IP20 Comb jumper bars,

- direct insertion in the screw clamp before tightening the screws, above the eventual conductor (if conductor used with ferrule, we recommend the use of long ferrule for optimized mounting ergonomony with test disconnect terminal blocks),
- Multiple versions available in pre-cut poles for test disconnect terminal blocks applications.

### Ordering details

Description	Color	Type	Order code	Pkg qty	Weight (1 pce)
<b>Lateral jumper bars</b>					
8 mm 0.315 in spacing	Black ■	2 poles	PC8-2	1SNA116538R1700	3.00
		3 poles	PC8-3	1SNA116539R1000	4.00
		4 poles	PC8-4	1SNA116540R2500	6.00
		10 poles	PC8-10	1SNA163313R2400	14.00

### Lateral jumper bars pre-cut poles

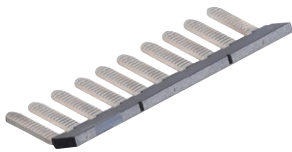
8 mm 0.315 in spacing	Color	Type	Order code	Pkg qty	Weight (1 pce)
8 mm 0.315 in spacing	Black ■	4/6 poles	PC8-R1	1SNA400711R0600	6.60
		4/8 poles	PC8-R2	1SNA400712R0700	7.80
		4/10 poles	PC8-R3	1SNA400713R0000	9.00
		3/4 poles	PC8-R4	1SNA400724R0300	4.50
		4/7 poles	PC8-R5	1SNA400842R0000	6.60
		2/3 poles	PC8-R6	1SNA400843R0000	6.60
		4/6 poles	PC8-R7	1SNA400849R0000	6.60
		4/8 poles	PC8-R8	1SNA400850R0000	7.80

### Main technical data

<b>Material specifications</b>	Insulating material	Polyamide	
	Flammability	V0	
	NF F 16 101	I2F3	
<b>Ambient temperature min/max</b>	Service IEC 60068-2-1	-55 ... +110 °C	-67 ... +230 °F
	Storage	-55 ... +110 °C	-67 ... +230 °F
	Installing	-5 ... +40 °C	+23 ... +104 °F

All the main technical data provided are "manufacturer" values

<b>RoHS</b>	RoHS								
-------------	------	--	--	--	--	--	--	--	--



1SNC160337F0014

**PC81**  
8 mm 0.315 in spacing

## PC81 lateral jumper bars

### Description

Comb-type jumper bar, allows the connection of consecutive blocks or not by one compression clamp connection.

### Ordering details

Description	Color	Type	Order code	Pkg qty	Weight (1 pce)
8 mm 0.315 in spacing	Grey □	PC81-10	1SNA173523R1100	10	5.00

### Main technical data

<b>Material specifications</b>	Insulating material	Brass/polyamide	
	Flammability	V0	
	NF F 16 101	I2F3	
<b>Ambient temperature min/max</b>	Service IEC 60068-2-1	-55 ... +110 °C	-67 ... +230 °F
	Storage	-55 ... +110 °C	-67 ... +230 °F
	Installing	-5 ... +40 °C	-23 ... +104 °F

All the main technical data provided are "manufacturer" values

<b>RoHS</b>	RoHS								
-------------	------	--	--	--	--	--	--	--	--

All the technical data for UL/CSA standard and dimensions in inches are in italic.  
 Technical data valid for copper conductors only.

# Circuit separators

## Screw clamp terminal block accessories



1SNK16002F0014

**CS**  
0 mm *O* in spacing

### Mounting instructions



## CS circuit separators

### Description

- The CS circuit separator avoids the derating of terminal blocks when cut jumper bars JB are used,
- Compatible with feed-through terminal blocks up to 16 mm<sup>2</sup> 4 AWG,
- Without spacing loss.

### Ordering details

Description	Color	Type	Order code	Pkg qty	Weight (1 pce) g
0 mm <i>O</i> in spacing	Dark grey <input checked="" type="checkbox"/>	CS	1SNK900101R0000	20	0.20

### Main technical data

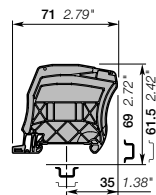
Material specifications	Insulating material	Polyamide			
	Flammability	V0			
	NF F 16 101	I2F2			
Ambient temperature min/max	Service IEC 60068-2-1	-55 ... +110 °C	-67 ... +230 °F		
	Storage	-55 ... +110 °C	-67 ... +230 °F		
	Installing	-5 ... +40 °C	+23 ... +104 °F		
All the main technical data provided are "manufacturer" values					
RoHS <input checked="" type="checkbox"/>					

5



1SNK16003F0014

**CS-R1**



3 mm *O.118* in spacing

## CS-R1 circuit separators

### Description

- Ease the visual identification of the several circuits within your terminal block assemblies,
- Compatible with feed-through terminal blocks up to 35 mm<sup>2</sup> *O* AWG,
- Intermediate cover holder for CO protective cover,
- Mounting on DIN3-TH35 rail.

### Ordering details

Description	Color	Type	Order code	Pkg qty	Weight (1 pce) g
3 mm <i>O.118</i> in spacing	Dark grey <input checked="" type="checkbox"/>	CS-R1	1SNK900103R0000	20	5.20

### Main technical data

Material specifications	Insulating material	Polyamide			
	Flammability	V0			
	NF F 16 101	I2F2			
Ambient temperature min/max	Service IEC 60068-2-1	-55 ... +110 °C	-67 ... +230 °F		
	Storage	-55 ... +110 °C	-67 ... +230 °F		
	Installing	-5 ... +40 °C	+23 ... +104 °F		
All the main technical data provided are "manufacturer" values					
RoHS <input checked="" type="checkbox"/>					

### Accessories

Description	Color	Type	Order code	Pkg qty	Weight (1 pce) g
Terminal block markers	White <input type="checkbox"/>	MG-CPM 13 41790	1SNB041790R0512	1960	0.23
Blank card		MC512	1SNK140000R0000	22	9.00
		MC512PA	1SNK149999R0000	20	10.00
Universal wire markers holder 5.2 mm <i>O.205</i> in spacing	Grey <input type="checkbox"/>	UMH	1SNK900611R0000	10	0.20

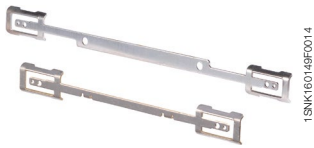
### Mounting instructions



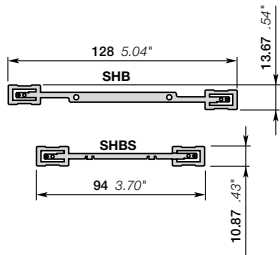
All the technical data for UL/CSA standard and dimensions in inches are in italic.  
Technical data valid for copper conductors only.

# Shield connectors

## Screw clamp terminal block accessories



SHBS/SHB



### SHBS/SHB shield connectors

#### Description

- Ensure the continuity of your shield connection,
- Various connection solutions available: RILS cable ties, soldering, quick-connect.

#### Ordering details

Description	Color	Type	Order code	Pkg qty	Weight (1 pce) g
Compatible with ZS feed-through terminal blocks		SHBS	1SNK900600R0000	20	3.50
Compatible with ZS and ZK double deck terminal blocks		SHB	1SNK900602R0000	20	4.90

#### Main technical data

Material specifications	Insulating material				
	Flammability				
	NF F 16 101				
Ambient temperature min/max	Service IEC 60068-2-1	-55 ... +110 °C	-67 ... +230 °F		
	Storage	-55 ... +110 °C	-67 ... +230 °F		
	Installing	-5 ... +40 °C	+23 ... +104 °F		
SHBS	IEC	UL - CSA	Ex e		
Rated voltage	320 V		125 V		
All the main technical data provided are "manufacturer" values					
RoHS	RoHS				

#### Accessories for screw clamp and PI-Spring terminal blocks

Description	Color	Type	Order code	Pkg qty	Weight (1 pce) g
Cable ties		RILS	1SNK900627R0000	10	0.30

#### Mounting instructions



- SHBS is directly fixed on the terminal block,
- SHB is fixed on the ES4-D2 end section,
- SHBP is directly fixed on the terminal block,
- Connect the cable shielding on the shielding connector with:
- RILS cable ties,
- quick-connect (the shield connector needs to be prepared),
- soldering iron.

All the technical data for UL/CSA standard and dimensions in inches are in italic.  
Technical data valid for copper conductors only.



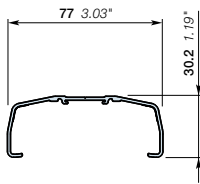
# Protecting covers

## Screw clamp terminal block accessories



1SNK160110CF0014

CO



### CO protecting covers

#### Description

- Restrict access to your assembly with the protecting cover CO installed with KCO mounting kit (2 end stops, 2 sealing accessories),
- Compatible with SNK feed-through terminal blocks up to 35 mm<sup>2</sup> 0 AWG.

#### Ordering details

Description	Color	Type	Order code	Pkg qty	Weight (1 pce) g
1 m 39.4 in length	Transparent <input checked="" type="checkbox"/>	CO	1SNK900604R0000	1	300.00

#### Main technical data

Material specifications	Insulating material	PVC			
	Flammability	V0			
Ambient temperature min/max	NF F 16 101				
	Service IEC 60068-2-1	-55 ... +80 °C	-67 ... +176 °F		
	Storage	-55 ... +80 °C	-67 ... +176 °F		
	Installing	-5 ... +40 °C	+23 ... +104 °F		

All the main technical data provided are \*manufacturer\* values

RoHS  
RoHS

#### Accessories

Description	Color	Type	Order code	Pkg qty	Weight (1 pce) g
Protecting cover kits	Dark grey <input checked="" type="checkbox"/>	KCO	1SNK900624R0000	1	47.80
Label	White <input type="checkbox"/>	PAM43020	1SNA235106R2600	20	27.00

#### Mounting instructions

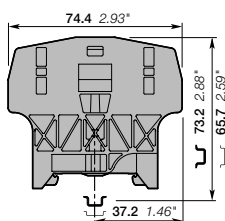


- Restrict access to the circuit by sealing the cover:
- Drill on the CO center line at 5 mm 0.197 in from the extremity with 5 mm 0.197 in diameter drill,
  - Pass the sealing collar through the CO and KCO holes.



1SNK160144F0014

KCO



### KCO protecting cover kits

#### Description

Mount your protecting cover with the KCO versatile mounting kit (2 end stops, 2 sealing accessories):

- Maintain the cover,
- Reliably seal the access to the terminal assembly if needed,
- Use it as well as an end stop.

#### Ordering details

Description	Color	Type	Order code	Pkg qty	Weight (1 pce) g
Mounting kit for cover CO	Dark grey <input checked="" type="checkbox"/>	KCO	1SNK900624R0000	1	47.80

#### Main technical data

Material specifications	Insulating material	Polyamide		Rail	G32, TH 35-7.5,
	Flammability	V0			TH 35-15, TH 15-5.5
Ambient temperature min/max	NF F 16 101			Tool	Flat screwdriver
	Service IEC 60068-2-1	-55 ... +110 °C	-67 ... +230 °F		Ø 4 mm
	Storage	-55 ... +110 °C	-67 ... +230 °F		Ø 0.157 in
	Installing	-5 ... +40 °C	+23 ... +104 °F		

All the main technical data provided are \*manufacturer\* values

RoHS  
RoHS

All the technical data for UL/CSA standard and dimensions in inches are in italic.  
Technical data valid for copper conductors only.

1SNK160045S0201







# End sections

## Pluggable terminal block accessories



1SNK160301V0014

EDK2.5-22

### EDK2.5-22 end sections

#### Description

– Compatible with ZDK2.5-22 and ZDK4-22 pluggable terminal blocks.

#### Ordering details

Description	Color	Type	Order code	Pkg qty	Weight (1 pce) g
2.2 mm 0.087 in spacing	Dark grey ■	EDK2.5-22	1SNK805910R0000	20	3.15



1SNK16032V0014

EDS4-22

### EDS4-22 end sections

#### Description

– Compatible with ZDS4-22 pluggable terminal block.

#### Ordering details

Description	Color	Type	Order code	Pkg qty	Weight (1 pce) g
0.8 mm 0.031 in spacing	Dark grey ■	EDS4-22	1SNK805911R0000	20	1.85

### Main technical data

Material specifications	Insulating material	Polyamide			
	Flammability	V0			
	NF F 16 101	I2F2			
Ambient temperature min/max	Service IEC 60068-2-1	-55 ... +110 °C	-67 ... +230 °F		
	Storage	-55 ... +110 °C	-67 ... +230 °F		
	Installing	-5 ... +40 °C	+23 ... +104 °F		

All the main technical data provided are "manufacturer" values.

RoHS  
RoHS

All the technical data for UL/CSA standard and dimensions in inches are in italic.  
Technical data valid for copper conductors only.

1SNK164010S0201

# Coding pegs - Locking devices

## Pluggable terminal block accessories



1SNK16028R0014

COP

### COP coding pegs

#### Description

– The coding pegs prevent plugs to be inserted into the wrong circuit.

#### Ordering details

Description	Color	Type	Order code	Pkg qty	Weight (1 pce) g
	Dark grey ■	COP-ZD	1SNK900636R0000	10	3.57

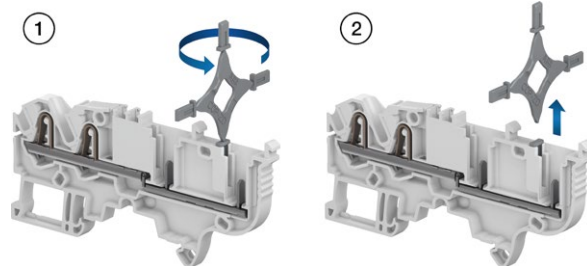
#### Main technical data

Material specifications	Insulating material	Polyamide	
	Flammability	V0	
	NF F 16 101	I2F2	
Ambient temperature min/max	Service IEC 60068-2-1	-55 ... +110 °C	-67 ... +230 °F
	Storage	-55 ... +110 °C	-67 ... +230 °F
	Installing	-5 ... +40 °C	+23 ... +104 °F

All the main technical data provided are "manufacturer" values.

RoHS  
RoHS

#### Mounting instructions



1SNK16031R0014

VR

9.4 mm 0.370 in spacing

### VR locking devices

#### Description

- Automatic locking providing excellent plug withstand in case of accidental pulling,
- Lock safely one or two CDK or CDS plugs on ZDK and ZDS pluggable terminal blocks,
- Install one VR... up to 8 poles plugs assembly and two VR... up to 15 poles assembly.

#### Ordering details

Description	Color	Type	Order code	Pkg qty	Weight (1 pce) g
9.4 mm 0.370 in spacing	Black ■	VR-ZD	1SNK900637R0000	50	6.5

#### Main technical data

Material specifications	Insulating material	Polyacetal	
	Flammability	HB	
	NF F 16 101		
Ambient temperature min/max	Service IEC 60068-2-1	-55 ... +110 °C	-67 ... +230 °F
	Storage	-55 ... +110 °C	-67 ... +230 °F
	Installing	-5 ... +40 °C	+23 ... +104 °F

All the main technical data provided are "manufacturer" values.

RoHS  
RoHS

#### Mounting instructions



All the technical data for UL/CSA standard and dimensions in inches are in italic.  
Technical data valid for copper conductors only.

1SNK164009S0201