

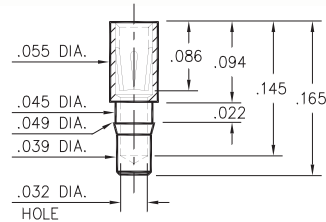
# PIN RECEPTACLES

FOR .015" - .025" DIAMETER PINS

## 0385

0385-0-15-XX-43-XX-10-0

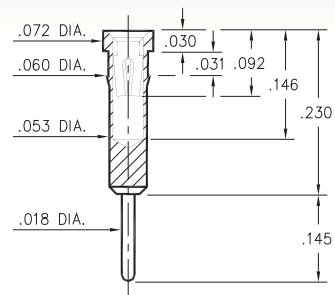
Press-fit in .046 mounting hole



## 4001

4001-0-15-XX-43-XX-04-0

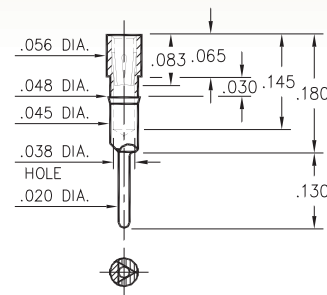
Press-fit in .057 mounting hole



## 1782

1782-0-15-XX-43-XX-04-0

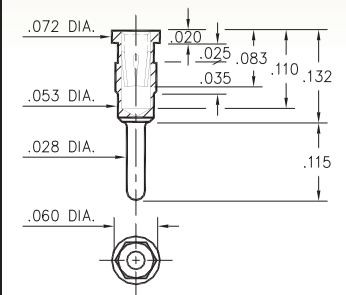
Press-fit in .045 mounting hole



## 5960

5960-0-15-XX-43-XX-04-0

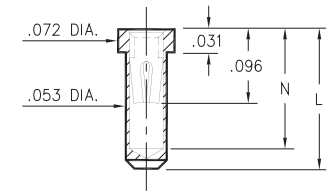
Hex press-fit in .057 plated through-hole



## 1401/3185

XXXX-0-15-XX-30-XX-10-0

Solder mount in .055 min. mounting hole  
Also available on 16mm wide carrier tape:  
1,700 parts per 13" reel  
Order as: XXXX-0-57-XX-30-XX-10-0

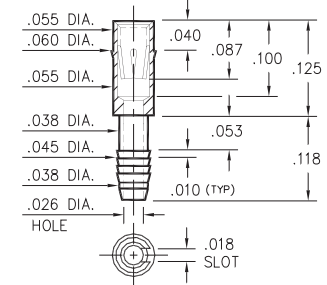


Basic Part Number	Length L	Depth N
1401-0	.165	.145
3185-0	.130	.109

## 4310

4310-0-31-XX-43-XX-04-0

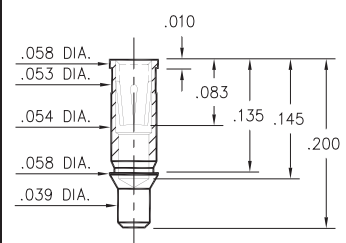
Compliant press-fit in .040 ± .003 plated through-hole. For .090" → .130" thick board



## 1385

1385-0-15-XX-43-XX-10-0

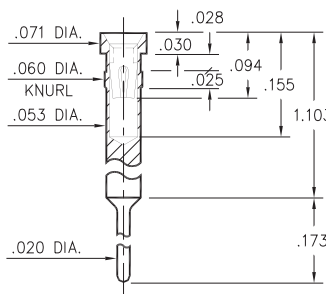
Surface mount



## 3018

3018-0-15-XX-30-XX-04-0

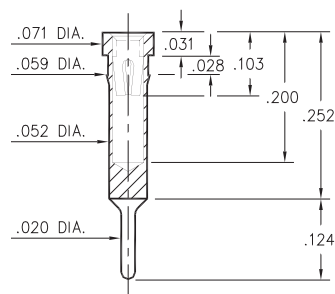
Press-fit in .057 mounting hole



## 8852

8852-0-15-XX-30-XX-04-0

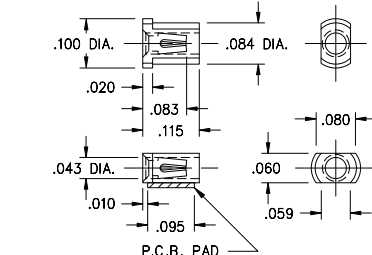
Press-fit in .056 mounting hole



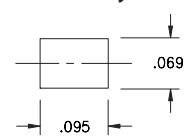
## 3907

3907-0-18-XX-30-XX-10-0

Surface mount  
Also available on 12mm wide carrier tape:  
4,000 parts per 13" reel  
Order as: 3907-0-58-XX-30-XX-10-0



P.C.B. Layout



### SPECIFICATIONS:

Shell Material: Brass Alloy 360, 1/2 Hard

Contact Material: Beryllium Copper Alloy 172, HT

Dimensions: Inches

Tolerances On: Lengths: ±.005

Diameters: ±.002

Angles: ± 2°



ORDER CODE: XXXX - X - XX - XX - XX - XX - XX - 0

BASIC PART #

SPECIFY SHELL FINISH:

- 01 200 μ" TIN/LEAD OVER NICKEL
- ◆ 80 200 μ" TIN OVER NICKEL (RoHS)
- ◆ 15 10 μ" GOLD OVER NICKEL (RoHS)

SPECIFY CONTACT FINISH:

- 02 100 μ" TIN/LEAD OVER NICKEL
- ◆ 84 100 μ" TIN OVER NICKEL (RoHS)
- ◆ 27 30 μ" GOLD OVER NICKEL (RoHS)

SELECT CONTACT:

#30, #35 or #43 CONTACT (DATA ON PAGE 253 & 254)

(For alternate contact choices, see groups B and C on page 248)



Mill-Max Mfg. Corp. • 190 Pine Hollow Road, P.O. Box 300, Oyster Bay, NY 11771 • 516-922-6000 • Fax: 516-922-9253 • www.mill-max.com