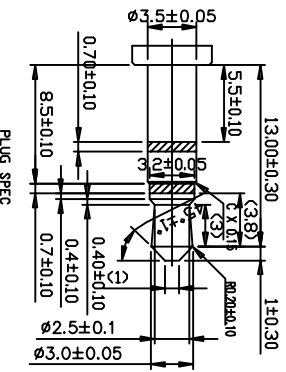
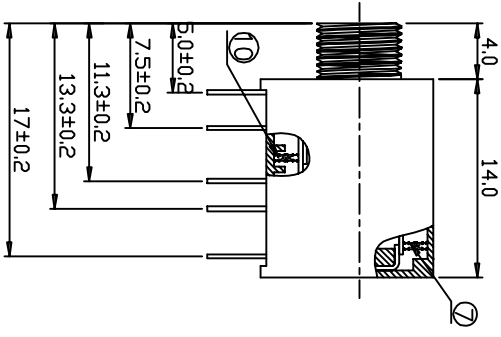
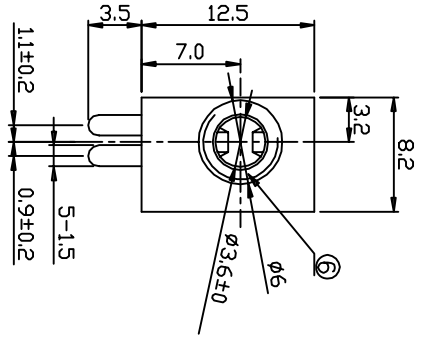


PCB LAYOUT TOP VIEW

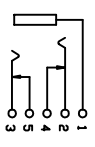


NOTE: ALL DIMS ARE IN mm

THREAD: M6.0-0.5

SCHEMATIC	
THREAD	RSJ-372-NL
NON THREAD	RSJ-372N-NL

CIRCUIT DIAGRAM



ECN#	DATE	SYM	CHANGE THE VIEW AND INSTRUCTIONS	REVISION RECORD	AUTH	BY
12-115	06/26/12	A			MD	TL

PROJECTION	SCALE	TITLE
1st Angle	N/A	3.5mm Jack PC Mount, RoHS Compliant
TOLERANCE	DR.	DATE
EXCEPT AS NOTED	AP/is	11/24/10
DEC. MILLIMETERS	PRE-CK.	MD
X ± 0.5		
X ± 0.3		
X.XX ± 0.15		
ANG. ± 3°		
REF. P/N: RSJ-372-NL	DRAWING NO. 4004	SIZE F
SHEET 1 OF 3	REV. A	



Research Develop Innovate


RDI, Inc. 333 North Bedford Road, Suite 135, Mount Kisco, NY 10549

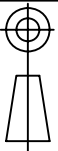
No.	ITEM	QTY	MATERIAL (CHK. COLOR)	REMARK
⑩	SPRING	1	MUSIC WIRE	CuSn-plated
⑨	HOUSING	1	PBT(Black)	
⑧	HOUSING	1	PBT(Black)	
⑦	SPRING	1	MUSIC WIRE	CuSn-plated
⑥	FIX TURN	1	H59(Cu-Allloy)	CuSn-plated
⑤	TERMINAL	1	BRASS t=0.30	Ag-plated
④	TERMINAL	1	BRASS t=0.30	Ag-plated
③	TERMINAL	1	PHOSPHOR BRO NZE t=0.30	Ag-plated
②	TERMINAL	1	BRASS t=0.30	Ag-plated
①	TERMINAL	1	BRASS t=0.30	Ag-plated

RIPTON TITLE : 3.5mm JACK PC MOUNT , ROHS COMPLIANT P/N : RSJ-372-NL		
1. RATING : DC 50V 0.3A		
PRACTICAL TEMPERATURE RANGE -16-65oC In-16 C ~ + 65 C temperature inside and use		
STANDARD ATMOSPHERIC CONDITIONS UNLESS OTHERWISE SPECIFIED THE STANDARD RANGE OF ATMOSPHERIC CONDITIONS FOR MAKING MEASUREMENTS AND TESTS ARE AS FOLLOWS: (1) BETWEEN BODY AND CONDUCTOR: 5oC TO 35°C (2) BETWEEN CONDUCTORS NOT TO BE CONTACT : 45% TO 85% (3) PRESSURE : 86kpa TO 106kpa		
2. MECHANICAL		
ITEM	TEST CONDITIONS	PERFORMANCE
2.1	CONNECTION FORCE MEASUREMENT SHALL BE MADE AFTER CONNECTING AND DISCONNECTING USING STANDARD PLUG GAUGE 3 TIMES.	3-20N
2.2	DISCONNECT ON FORCE MEASUREMENT SHALL BE MADE AFTER CONNECTING AND DISCONNECTING USING STANDARD PLUG GAUGE 3 TIMES.	3-20N
2.2	TERMINAL STRENGTH A STATIC LOAD OF 0.1N/(kgf/cm) SHALL BE APPLIED TO THE TIP OF THE TERMINAL FOR 1MIN IN ANY DIRECTION	THERE SHALL BE NO DAMAGE TO THE TERMINAL SUCH AS CRACKS, LOOSENESS OR PLAY ELECTRICAL AND MECHANICAL CHARACTERISTICS SHALL BE SATISFIED
3. ELECTRICAL		
ITEM	TEST CONDITIONS	PERFORMANCE
3.1	CONTACT RESISTANCE MEASURED AT SMALL CURRENT (< 100mA OR LESS) 1000HZ	≤0.03Ω
3.2	INSULATION RESISTANCE APPLY A VOLTAGE OF 500V DC FOR 1 MIN TO FOLLOWING PORTIONS AFTER WHICH MEASUREMENT SHALL BE MADE: (1) BETWEEN BODY AND CONDUCTOR (2) BETWEEN CONDUCTORS NOT TO BE CONTACT (3) BETWEEN CONDUCTORS NOT TO BE WHEN PLUG IS INSERTED DC 500V 1 MIN	≥100MΩ

3.3	DIELECTRIC STRENGTH TEST CONDITIONS AC 500V (rms/50-60Hz) FOR 1 MIN TRIP CURRENT: 0.5mA (1) BETWEEN BODY AND CONDUCTOR (2) BETWEEN CONDUCTORS NOT TO BE CONTACT (3) BETWEEN CONDUCTORS NOT TO BE WHEN PLUG IS INSERTED DC 500V 1 MIN	PERFORMANCE WITHOUT DAMAGE TO PARTS ARCING OR BREAKDOWN ETC
4. USABILITY		
ITEM	TEST CONDITIONS	PERFORMANCE
4.1	SOLDER ABILITY TEST THE TOP OF THE TERMINALS SHALL BE DIPPED 1mm IN THE SOLDER BATH OF 240±5°C FOR 3±0.5 SECONDS	(1) SOLDER WETTING TIME SHALL BE 3 SEC OR LESS (2) THE AREA OF SOLDERING SHOULD BE OVER 75%
4.2	RESISTANCE TO SOLDERING HEAT TEST SOLDERING IRON METHOD: BIT TEMPERATURE 330±5°C APPLICATION TIME OF SOLDERING IRON 3±0.5 SEC HOWEVER EXCESSIVE PRESSURE SHALL NOT BE APPLIED TO THE TERMINAL	WITHOUT DEFORMATION OF CASE OR EXCESSIVE LOOSENESS OF TERMINALS ELECTRICAL CHARACTERISTICS SHALL BE SATISFIED
4.3	HUMIDITY TEST THE JACK SHALL BE STORED AT A TEMPERATURE OF 40±2°C AND A HUMIDITY OF 90% TO 96% FOR 96 H, THEN THE JACK SHALL BE MAINTAINED AT STANDARD ATMOSPHERIC CONDITION FOR 1 H FOR OTHER PROCEDURES	THERE SHALL BE NO DAMAGE ON APPEARANCE. MECHANICAL AND ELECTRICAL CHARACTERISTICS SHALL BE SATISFIED
4.4	HEAT TEST THE JACK SHALL BE STORED AT A TEMPERATURE OF 70±2°C FOR 96 HOURS, AND THEN IT SHALL BE SUBJECTED TO THE CONTROLLED RECOVERY MBASURBM	MECHANICAL AND ELECTRICAL CHARACTERISTICS SHALL BE SATISFIED
4.5	COLD TEST THE JACK SHALL BE STORED AT A TEMPERATURE OF -25±3°C FOR 96 HOURS AND THEN IT SHALL BE SUBJECTED TO THE CONTROLLED RECOVERY CONDITIONS FOR 1 HOUR AFTER WHICH	MECHANICAL AND ELECTRICAL CHARACTERISTICS SHALL BE SATISFIED

12-115	06/26/12	A	CHANGE THE VIEW AND INSTRUCTIONS
ECN#	DATE	SYM	REVISION RECORD
		MD	
		TL	
		AND.	±3°


RD1 Research Develop Innovate
 RD1, Inc. 333 North Bedford Road, Suite 135, Mount Kisco, NY 10549

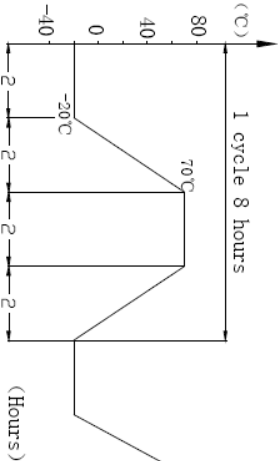
PROJECTION


SCALE: N/A
 TOLERANCE EXCEPT AS NOTED
 DEC. MILLIMETERS
 X.X ± 0.5
 X.XX ± 0.3
 X.XXX ± 0.15
 ANG. ±3°

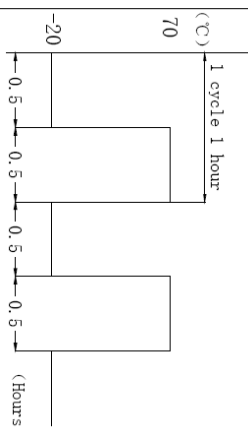
DR.	DATE	REF.	SHEET
AP-15	11/24/10	P/N: RSJ-372-NL	2 OF 3
CK.	PRE-	DRAWING NO. 4004	REV. A
MD	JK	SIZE F	

THIS DOCUMENT IS OWNED BY, AND THE INFORMATION CONTAINED IN IT IS PROPRIETARY TO, RD1. BY RECEIPT HEREOF THE HOLDER AGREES NOT TO USE THE INFORMATION AND NOT TO DISCLOSE IT TO ANY THIRD PARTY. NDR REPRODUCE THIS DOCUMENT WITHOUT THE WRITTEN CONSENT OF RD1, AND AGREES TO RETURN THIS DOCUMENT FORTHWITH UPON REQUEST.

ITEM	TEST CONDITIONS	PERFORMANCE
4.6 LIFE TEST	WITHOUT LOAD CONNECTION AND DISCONNECTION SHALL BE MADE WITH THE MATING PLUGS AND JACKS FOR 5, 000 CYCLES AT A SPEED OF 10 TO 25 CYCLES/MIN LOAD: AT RATING CONDITION (NON-INDUCTIVE LOAD) CONNECTION AND DISCONNECTION SHALL BE MADE 1,000 CYCLES AT A SPEED 10 TO 20 CYCLES / MIN	(1) CONTACT RESISTANCE SHALL BE $\leq 0.1\Omega$ (2) DISCONNECTION FORCE SHALL BE 3 TO 20N (3) MECHANICAL AND ELECTRICAL CHARACTERISTICS SHALL BE SATISFIED
4.7 TEMPERATURE CYCLING TEST	THE JACK SHALL BE SUBJECTED TO 5 CYCLES OF THE FOLLOWING CONDITIONS SHOWN IN THE FIGURE AND THEN SHALL RETURNED ALLOWED TO REMAIN IN ROOM AMBIENT CONDITION FOR 30 MINUTES	THERE SHALL BE NO DEFORMATION OR CRACKS IN MOLDED PART. INSERTION & EXTRACTION FORCE: 3 TO 20N CONTACT RESISTANCE: MAX. 30M Ω INSULATION RESISTANCE: MIN. 100 M Ω DIELECTRIC WITHSTANDING VOLTAGE: 500VAC/MIN (BETWEEN TERMINALS)



ITEM	TEST CONDITIONS	PERFORMANCE
4.8 COLD/HEAT SHOCK TEST	THE JACK SHALL BE SUBJECTED TO 5 CYCLES OF THE FOLLOWING CONDITIONS SHOWN IN THE FIGURE AND THEN SHALL RETURNED AND ALLOWED TO REMAIN IN ROOM AMBIENT CONDITION FOR 30 MINUTES	THERE SHALL BE NO DEFORMATION OR CRACKS IN MOLDED PART. INSERTION & EXTRACTION FORCE: 3 TO 20N CONTACT RESISTANCE: MAX. 30M Ω INSULATION RESISTANCE: MIN. 100 M Ω DIELECTRIC WITHSTANDING VOLTAGE: 500VAC/MIN (BETWEEN TERMINALS)



12-115	06/26/12	A	CHANGE THE VIEW AND INSTRUCTIONS	MD	TL
ECN#	DATE	SYM	REVISION RECORD	AUTH	BY

TITLE: 3.5mm jack PC Mount, RoHS Compliant		Research Develop Innovate	
RD1, Inc. 333 North Bedford Road, Suite 135, Mount Kisco, NY 10549			
SCALE: N/A	DR: AP-15	DATE: 11/24/10	REF: P/N: RSJ-372-NL
TOLERANCE EXCEPT AS NOTED	CK: MD	PRE: JK	DRAWING NO: 4004
DEC. MILLIMETERS	X.X ± 0.5	X.X ± 0.3	SIZE: F
	X.XX ± 0.15	ANG. ± 3°	SHEET 3 OF 3
THIS DOCUMENT IS OWNED BY, AND THE INFORMATION CONTAINED IN IT IS PROPRIETARY TO, RD1. BY RECEIPT HEREOF THE HOLDER AGREES NOT TO USE THE INFORMATION AND NOT TO DISCLOSE IT TO ANY THIRD PARTY. NO REPRODUCTION OF THIS DOCUMENT WITHOUT THE WRITTEN CONSENT OF RD1. AND AGREES TO RETURN THIS DOCUMENT FORTHWITH UPON REQUEST.			REV. A