

## Touch Board<sup>®</sup> Pro Kit

Prototype, paint and create with electronics.

Contours used one of the largest printing screens in the UK to print Electric Paint sensors 1.2m in length.

## Guides, tutorials and resources to help you get started

### 1 Search

The Touch Board Pro Kit is fully supported by tutorials, code examples and digital tools online. The Resource Guide features a list of the essential resources hosted on our website.

You can download it as an interactive PDF at: [bit.ly/ResourceGuide\\_RG](http://bit.ly/ResourceGuide_RG)

Or use the search terms to quickly navigate to the digital version of each resource at: [bareconductive.com/make](http://bareconductive.com/make)

Search

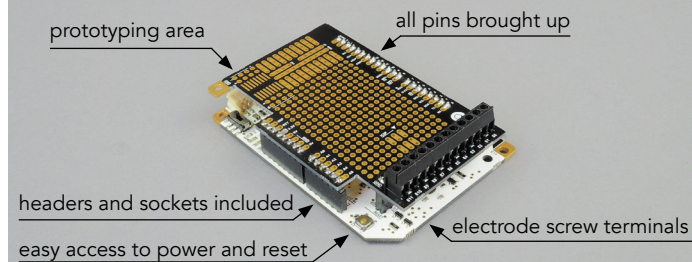
### 2 Make

Take our tools to their limits. Use the Touch Board, Electric Paint and our brand new Proto Shield to create your project.

### 3 Share

Get in touch and share your insights, projects and ideas with the team [@bareconductive](https://twitter.com/bareconductive) #TouchBoard #ElectricPaint.

## NEW Touch Board Proto Shield



### A new way to connect to Electric Paint

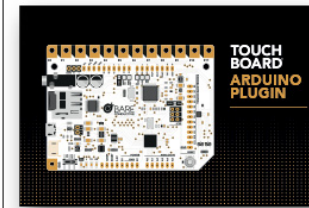
Our brand new Touch Board Proto Shield is debuting in the Touch Board Pro Kit. You asked for a more robust way to connect to your Electric Paint sensors, and the Proto Shield is the answer.

You can find screw terminals for wired connections, a convenient ground plane for using shielded cable, a prototyping area and all pins brought up to the shield for your project.

Solder on the sockets and headers and start your next project with our step-by-step tutorial online. Just search:

Proto Shield

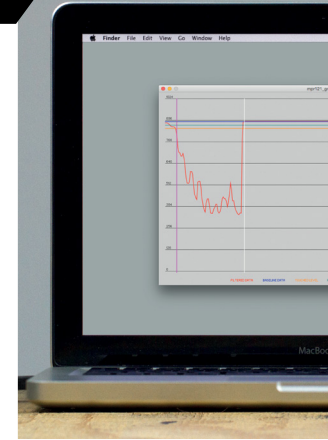
## Software Resources



### Set up the Touch Board + Arduino

The Touch Board is easy to reprogram. You'll find tutorials on how to set up the Arduino IDE, adjust settings on the board and unlock new functions.

Search: [Installer](#)



### Touch Board + Grapher

Visualise the sensitivity and precision of the Touch Board's sensors. Perfect for prototyping a new sensor design, testing a new material or calibrating your project.

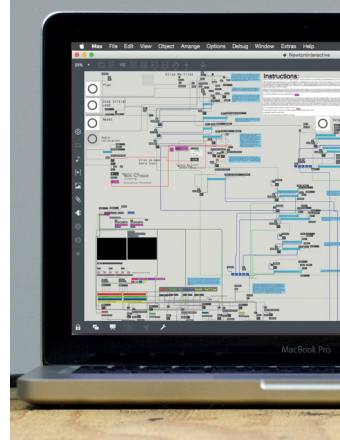
Search: [Grapher](#)



### Touch Board + Ableton Live

The Touch Board works great with Ableton Live. Our tutorial shows you how to get your board set up and gives you a brief introduction to a basic project.

Search: [Ableton Live](#)

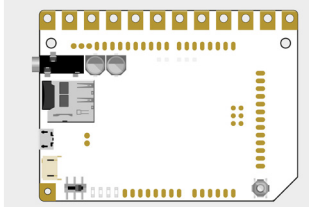


### Touch Board + MaxMSP Live

The Touch Board is easy to use with Max/MSP. Our tutorial explains how to set up your board and takes you on a tour of our Max patch.

Search: [MaxMSP](#)

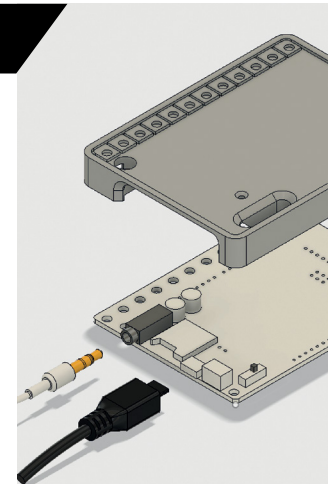
## Digital Tools



### Touch Board Vector Files (Ai)

Get ahead with the digital design of your project. Download the Touch Board vector files and integrate them into your design from the start.

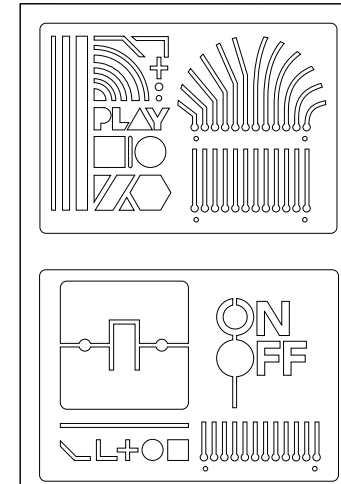
Search: [Vector](#)



### Touch Board Housing (IGES, STL, STEP)

We've put together a basic Touch Board housing to get you started. 3D print as it is or modify our file to suit your project needs.

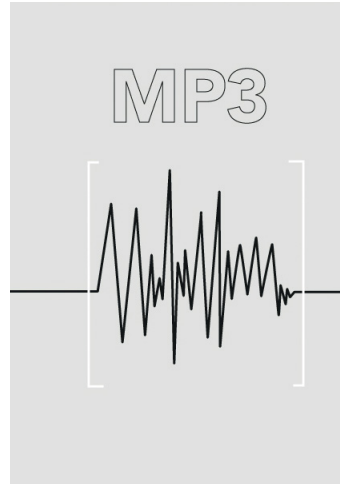
Search: [Housing](#)



### Electrode Pitch Stencil Vector Files (Ai)

Downloadable vector files you can modify, print or cut out. Make stencils or templates to create visual graphics for your project.

Search: [Stencils](#)

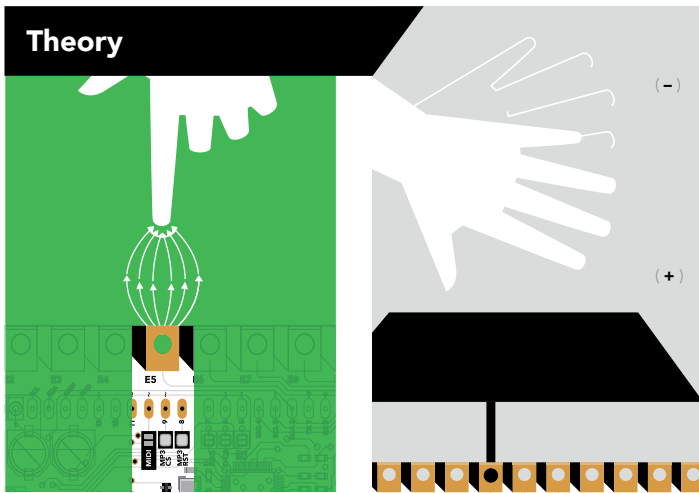


### MP3 Sound Library

A free library of MP3 tracks for you to get started. Download the files and start changing the sounds on your Touch Board immediately.

Search: [Sound Library](#)

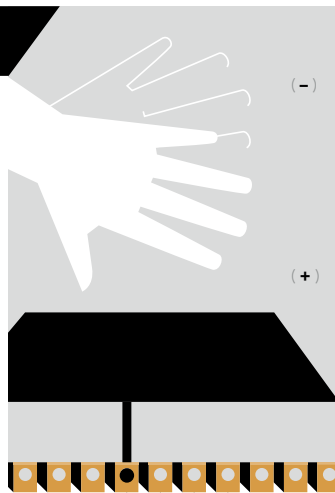




### What is Capacitive Sensing?

The Touch Board has 12 capacitive sensing electrodes, each of which can detect touch and proximity. Learn more about the Touch Board's high resolution sensors.

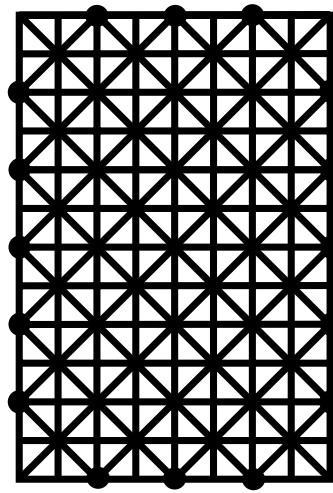
Search: [Capacitive Sensing](#)



### Making Distance Sensors

Set up your Touch Board to trigger it's sensors over a distance. Proximity mode allows you to increase an individual sensor's sensitivity.

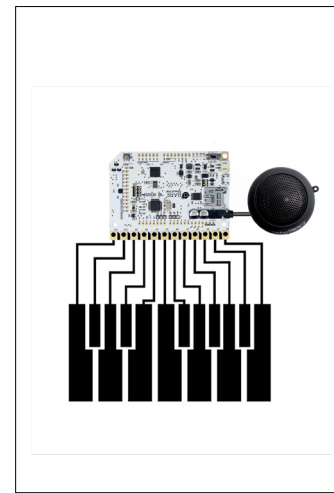
Search: [Proximity](#)



### Sensor Design Rules of Thumb

Learn about how shape, fill pattern and size affect the performance and sensitivity of your Electric Paint sensor.

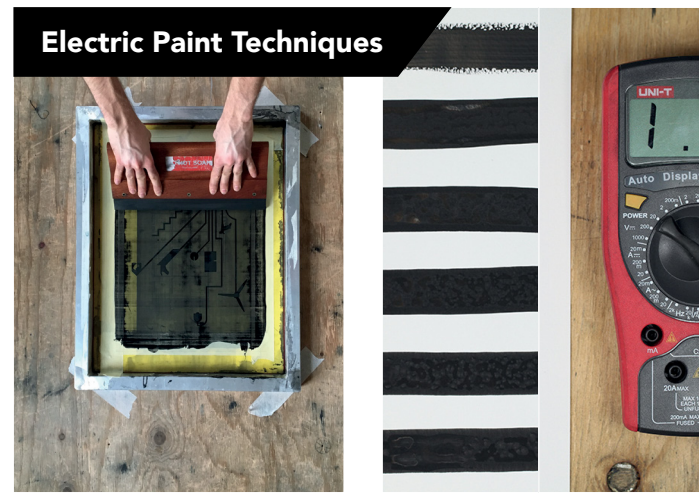
Search: [Sensor Design](#)



### Touch Board MIDI Mode

Turn the Touch Board into a standalone MIDI instrument or program the Touch Board to be a USB MIDI device, connecting it to your favourite audio software.

Search: [MIDI](#)



### Screen Print with Electric Paint

Learn how to screen print Electric Paint onto paper, cardboard, wood and more. Screen printing makes it easy to make precise and repeatable sensor designs.

Search: [Screen Print](#)

### Dilute Electric Paint

Learn how Electric Paint's performance changes when diluted. Follow this tutorial to find out how much water is appropriate.

Search: [Diluting](#)



### Seal Electric Paint

Protect the connections and sensors you've made with different sprays and varnishes. Ensure your painting lasts forever! And don't worry, it will still conduct.

Search: [Seal](#)

Tutorial contributed by Thomas Evans

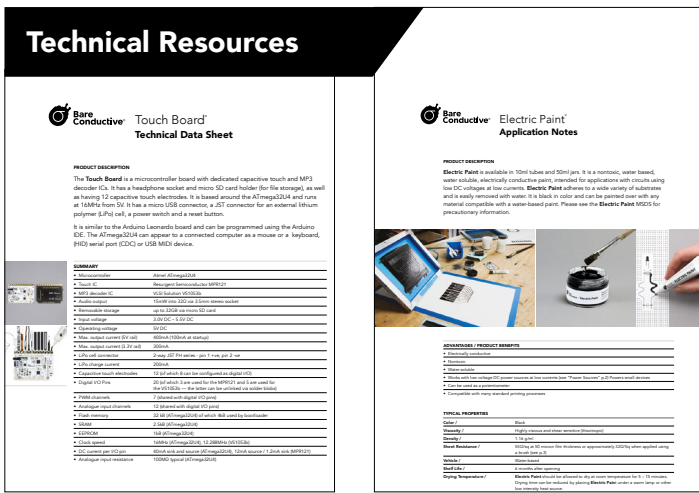


### How to Thin Electric Paint

You can mix Electric Paint with additives and medium solutions. Learn how to thin your Electric Paint to make it go further and use it across larger surfaces.

Search: [Thin](#)

Tutorial contributed by Thomas Evans



### Technical Data Sheet

All the technical details you need to start integrating Electric Paint or the Touch Board into your projects.

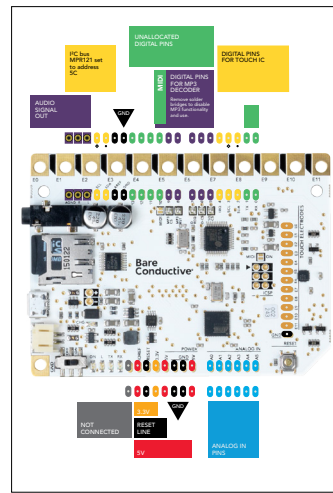
Search: [Spec Sheets](#)



### Application Notes

Refer to this document to learn about Electric Paint's material properties and suggested methods for use.

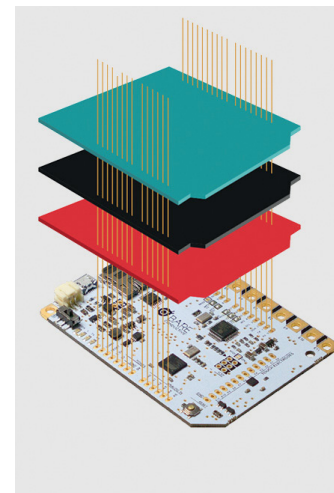
Search: [Spec Sheets](#)



### Pin Map

Find out what each of the pins on your board is for. Simply download the PDF for a close up of the Touch Board and its features.

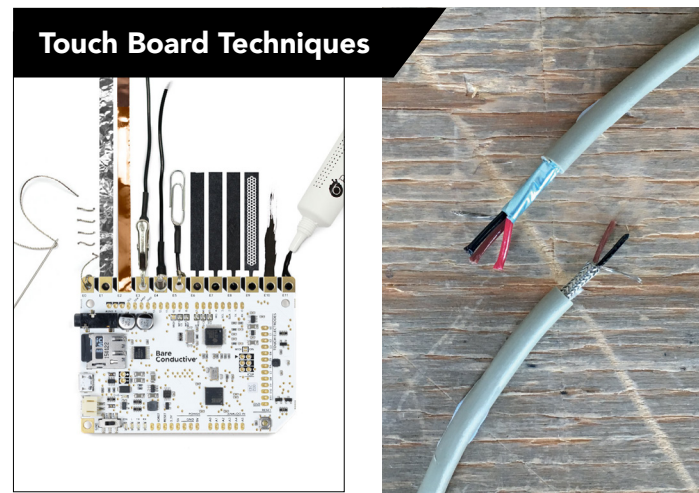
Search: [Pin Map](#)



### Shield Guide

Which shields will suit your Touch Board project the best? Download this PDF to learn about some awesome shields from Arduino, Adafruit and Sparkfun.

Search: [Shield Guide](#)



### Connect to your board's Electrodes

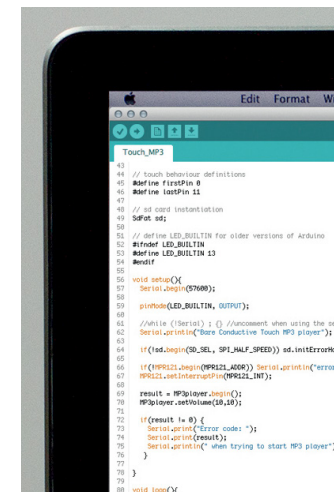
We designed the Touch Board's Electrodes to make them easy to connect to. Explore the ways you can hook your project up to your board.

Search: [Connecting](#)

### How to Use Shielded Cable

Protect your sensors from external interference with shielded cable. Find out what it is, what types there are and how it helps.

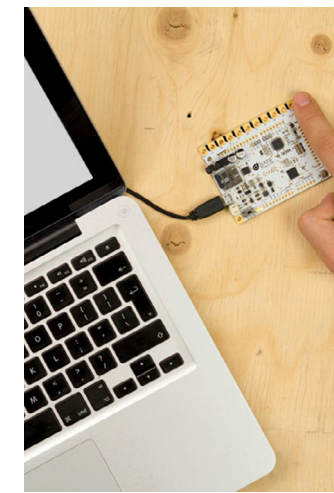
Search: [Shielded Cable](#)



### Change the Touch Board volume

The Touch Board uses an onboard chip to play back MP3 files. You can use this chip to adjust the volume to a level that you are happy with.

Search: [Volume](#)



### The Touch Board as an HID keyboard

Use the Touch Board as an HID input to your computer. Make a game controller, keyboard or interface with any program that requires key presses.

Search: [HID](#)