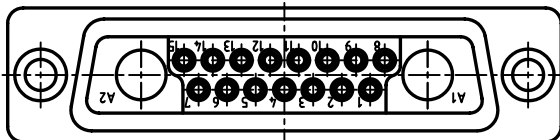
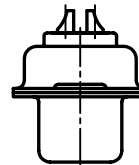
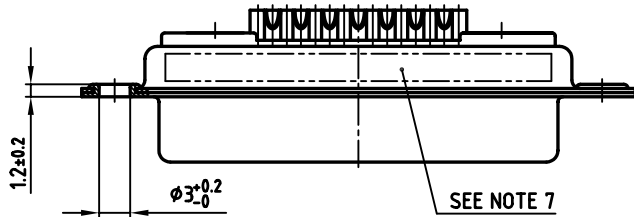
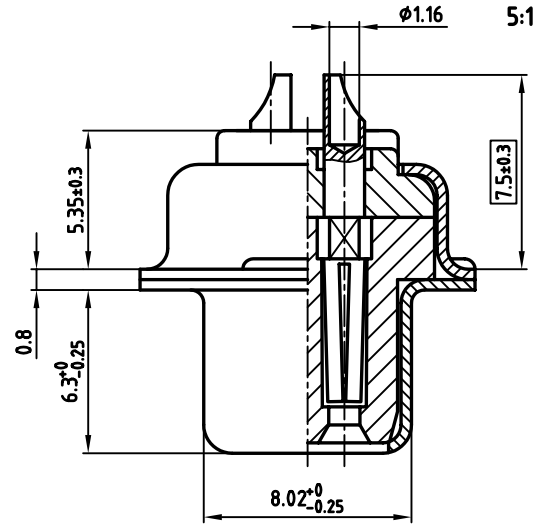
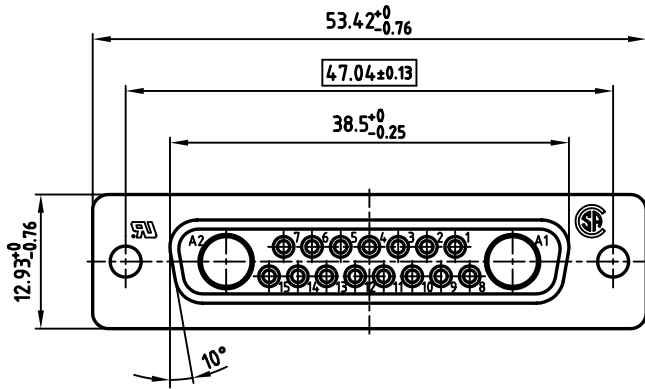


used for: D-SUB COMBINATION



PART-NO.	CFM PART-NO.
3017W2SCM99A10X	CFMP17W2S-K121

NOTES:

- METALSHELLS: STEEL; min. 320µ" TIN
- INSULATORS: PBT GF UL 94 V-0, GREEN
- SIGNAL CONTACTS: COPPER ALLOY
- PLATING: min. 30µ" HARD GOLD OVER min. 50µ" NICKEL
- SOLDER CUP ACCEPTS CABLE AWG 20
- NO CONTACTS ON POS A1 + A2
- CONNECTOR IS PART MARKED: PART NO: CONEC Y/WW
- = CRITICAL DIMENSION: SPC

Directive 2002/95/EC
 „RoHS“
 Compliant

THIS DRAWING MAY NOT BE COPIED OR REPRODUCED IN ANY WAY, AND MAY NOT BE PASSED ON TO A THIRD PARTY, WITHOUT WRITTEN PERMISSION. OWNERSHIP AND COPYRIGHT OF CONEC GmbH DO NOT ALTER CAD DRAWING BY HAND

tolerance		scale: 2:1 (5:1)	
		material: SEE NOTES	
2002	date	name	
drawn	02.08.	Schmidt	
appd.	02.08.	E. Mickenbecker	
norm			
d-old			
rev.	description	date	name



title:		D-SUB COMBINATION FEMALE	
		17W2S SOLDER CUP	
dwg no:		AutoCAD 2000	DIN-A
		13K1A664	3
			sh: 1/1
part no:		SEE TABLE	