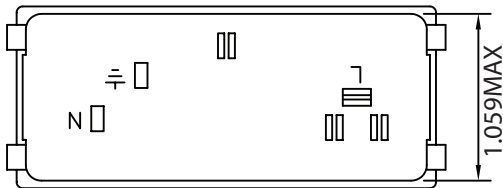
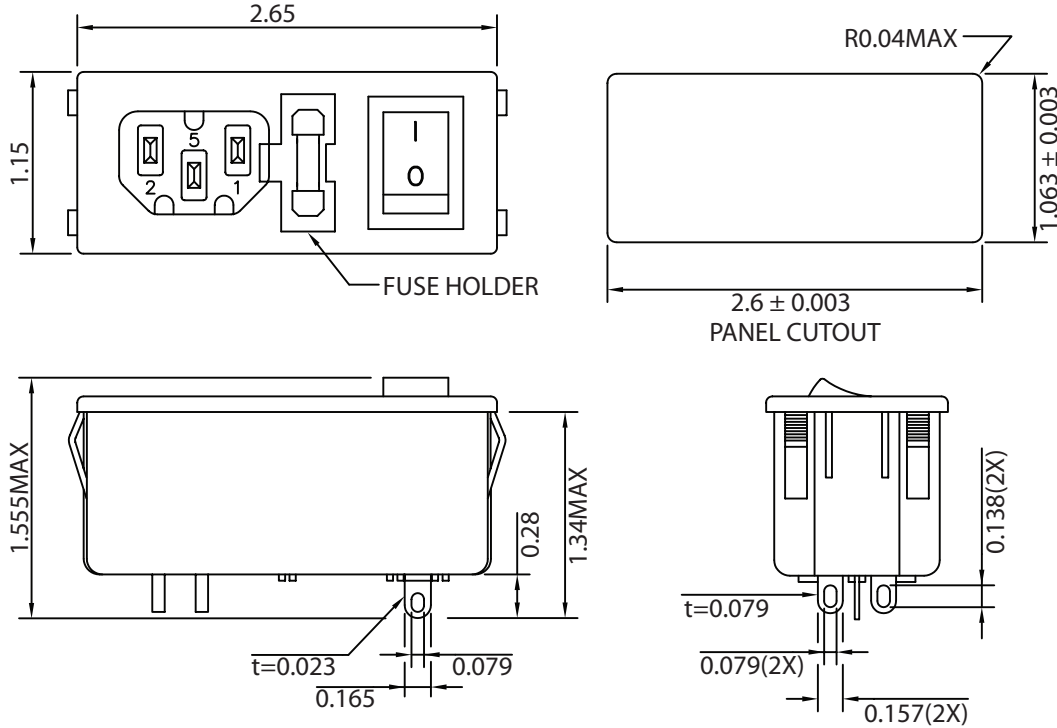


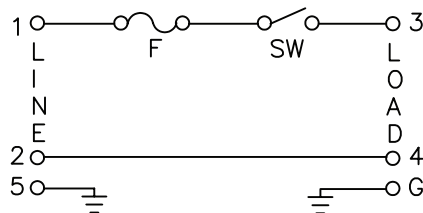
THESE DRAWINGS ARE THE PROPERTY OF QUALTEK ELECTRONICS AND NOT TO BE REPRODUCED FOR OR COMMUNICATED TO A THIRD PARTY WITHOUT THE EXPRESS WRITTEN PERMISSION OF AN OFFICER OF QUALTEK ELECTRONICS.

REVISION			
REV.	DESCRIPTION	DATE	APPROVED
B	RoHS Compliancy	06-01-06	DP
C	Updated Specifications	01-24-08	DP
D	Graphics and Approval Update	10-26-09	LY

MECHANICAL DIMENSIONS:



ELECTRICAL SCHEMATIC:



ELECTRICAL CHARACTERISTICS:

- 1-1. VOLTAGE RATING.....115/250VAC
- 1-2. CURRENT RATING
  - A. @ 115/250VAC (UL, CSA) .....6 A RMS MAX
  - B. @ 250VAC (SEMKO) .....6 A RMS MAX
- 1-3. SPST POWER SWITCH:
  - A. @ 250 VAC (VDE).....6 A RMS MAX
- 1-4. OPERATING FREQUENCY .....48-440Hz
- 1-5. HIPOT RATING (FOR ONE MINUTE)
  - A. LINE TO GROUND .....2000 VDC
  - B. LINE TO LINE .....2000 VDC
- 1-6. MINIMUM INSULATION RESISTANCE: @ 500VDC ONE MINUTE
  - A. LINE & NEUTRAL TO GROUND .....10M OHM
  - B. LINE & NEUTRAL .....10M OHM
- 1-7. SAFETY:
- 1-8. SINGLE 5x20mm FUSEHOLDER
- 1-9. SNAP-IN PANEL THICKNESS: .04IN~.07IN (1.0mm~1.8mm)
- 1-10. RoHS COMPLIANT

**CONTROLLED**

Dim range (mm)	Tolerance +/- (mm)	Qualtek Electronics Corp. PPC DIVISION		
		Part Number: 761-18/003		
0-1	0.15	Description: MULTI-FUNCTION MODULE		
1-6	0.20			
6-18	0.30			
18-50	0.50		UNIT: in	REV. D
50-120	0.70	Drawn / Date	Checked / Date	Approved / Date
120-250	0.90	S.Tsai 05-04-01	05-04-01	JJH / 05-04-01
250-500	1.20			

# Mouser Electronics

Authorized Distributor

Click to View Pricing, Inventory, Delivery & Lifecycle Information:

[Qualtek:](#)

[761-18/003](#)