

# PCB terminal block - SPT-SMD 1,5/ 2-V-3,5 R24 - 1824080

Please be informed that the data shown in this PDF Document is generated from our Online Catalog. Please find the complete data in the user's documentation. Our General Terms of Use for Downloads are valid (<http://phoenixcontact.com/download>)

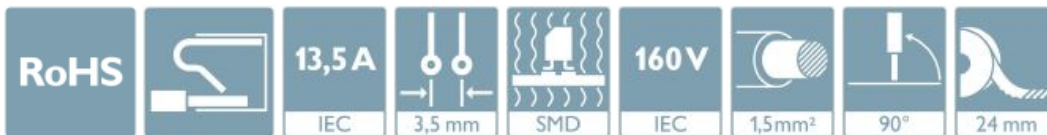


The figure shows the 10-position version

PCB terminal block, nominal current: 13.5 A, rated voltage (III/2): 160 V, nominal cross section: 1.5 mm<sup>2</sup>, Number of potentials: 2, Number of rows: 1, Number of positions per row: 2, product range: SPT 1,5/..-V-SMD, pitch: 3.5 mm, connection method: Push-in spring connection, mounting: SMD soldering, conductor/PCB connection direction: 90 °, color: black, Pin layout: Linear pad geometry, type of packaging: 24 mm wide tape. Sample values available under SAMPLE SPT...

## Your advantages

- ✓ Time saving push-in connection, tools not required
- ✓ Defined contact force ensures that contact remains stable over the long term
- ✓ Intuitive use through colour coded actuation lever
- ✓ Designed for integration into the SMT soldering process
- ✓ Operation and conductor connection from one direction enable integration into front of device
- ✓ Quick and convenient testing using integrated test option
- ✓ Two soldering spots per position reduce the mechanical strain on the soldering spots



## Key Commercial Data

|                                      |   |
|--------------------------------------|---|
| Packing unit                         | 1 pc  |
| Minimum order quantity               | 200 pc  |
| GTIN                                 | <br>4 046356 816182 |
| GTIN                                 | 4046356816182   |
| Weight per Piece (excluding packing) | 3.000 g   |
| Custom tariff number                 | 85369010  |
| Country of origin                    | Poland  |

## Technical data

### Item properties

# PCB terminal block - SPT-SMD 1,5/ 2-V-3,5 R24 - 1824080

## Technical data

### Item properties

|                           |                     |
|---------------------------|---------------------|
| Brief article description | PCB terminal block  |
| Range of articles         | SPT 1,5/..-V-SMD    |
| Pitch                     | 3.5 mm              |
| Number of positions       | 2                   |
| Mounting type             | SMD soldering       |
| Pin layout                | Linear pad geometry |
| Number of levels          | 1                   |
| Number of connections     | 2                   |
| Number of potentials      | 2                   |

### Electrical parameters

|                             |        |
|-----------------------------|--------|
| Nominal current             | 13.5 A |
| Nom. voltage                | 160 V  |
| Rated voltage (III/3)       | 160 V  |
| Rated voltage (III/2)       | 160 V  |
| Rated voltage (II/2)        | 320 V  |
| Rated surge voltage (III/3) | 2.5 kV |
| Rated surge voltage (III/2) | 2.5 kV |
| Rated surge voltage (II/2)  | 2.5 kV |

### Connection capacity

|   |  |
|---|--|
| Connection method   | Push-in spring connection                    |
| Conductor cross section solid   | 0.2 mm <sup>2</sup> ... 1.5 mm <sup>2</sup>  |
| Conductor cross section flexible                                      | 0.2 mm <sup>2</sup> ... 1.5 mm <sup>2</sup>  |
| Conductor cross section AWG / kcmil                                   | 24 ... 16                                    |
| Conductor cross section flexible, with ferrule without plastic sleeve | 0.2 mm <sup>2</sup> ... 1.5 mm <sup>2</sup>  |
| Conductor cross section, flexible, with ferrule, with plastic sleeve  | 0.2 mm <sup>2</sup> ... 0.75 mm <sup>2</sup> |
| Stripping length  | 8 mm   |

### Material data - contact

|  |   |
|--|---|
| Note                                     | WEEE/RoHS-compliant, free of whiskers according to IEC 60068-2-82/ JEDEC JESD 201 |
| Contact material                         | Cu alloy  |
| Surface characteristics                  | hot-dip tin-plated  |
| Metal surface terminal point (top layer) | Tin (4 - 8 µm Sn)   |
| Metal surface soldering area (top layer) | Tin (4 - 8 µm Sn)   |

### Material data - housing

|                     |              |
|---------------------|--------------|
| Housing color       | black (9005) |
| Insulating material | LCP          |

# PCB terminal block - SPT-SMD 1,5/ 2-V-3,5 R24 - 1824080

## Technical data

### Material data - housing

|  |      |
|--|------|
| Insulating material group              | IIIa |
| CTI according to IEC 60112             | 175  |
| Flammability rating according to UL 94 | V0   |

### Dimensions for the product

|                             |  |
|-----------------------------|--|
| Caption                     | Schematische Abbildung - weitere Details siehe Produktfamilienzeichnung im Download Center |
| Length [ l ]                | 7.7 mm   |
| Width [ w ]                 | 7.5 mm   |
| Height [ h ]                | 13.6 mm  |
| Pitch                       | 3.5 mm   |
| Height (without solder pin) | 13.6 mm  |
| Pin spacing                 | 7 mm   |
| Pin dimensions              | 0.7 x 0.3 mm   |

### Dimensions for PCB design

|               |        |
|---------------|--------|
| Hole diameter | 1.1 mm |
| Pin spacing   | 7 mm   |

### Packaging information

|                             |  |
|-----------------------------|--|
| Type of packaging           | 24 mm wide tape                          |
| Pieces per package          | 200                                      |
| Denomination packing units  | Pcs.                                     |
| [W] tape width              | 24 mm                                    |
| [A] coil diameter           | 330 mm                                   |
| [W2] coil overall dimension | 30.4 mm                                  |
| Outer packaging type        | Transparent-Bag                          |
| ESD level                   | (D) electrostatically conductive         |
| Specification               | DIN EN 61340-5-1 (VDE 0300-5-1): 2008-07 |

### General product information

|              |  |
|--------------|--|
| Type of note | Assembly instruction:                                    |
| Note         | This item is not suitable for PCB cleaning with liquids. |

### Processing notes

|   |  |
|---|--|
| Process                                   | Reflow soldering                         |
| Specification                             | Following IPC/JEDEC J-STD-020D.1:2008-03 |
|   | Following IEC 60068-2-58:2005-02         |
| Moisture Sensitive Level                  | MSL 1                                    |
| Classification temperature T <sub>c</sub> | 260 °C                                   |

# PCB terminal block - SPT-SMD 1,5/ 2-V-3,5 R24 - 1824080

## Technical data

### Processing notes

|                             |   |
|-----------------------------|---|
| Solder cycles in the reflow | 3 |
|-----------------------------|---|

### Ambient conditions

|   |   |
|---|---|
| Ambient temperature (storage/transport) | -40 °C ... 70 °C  |
| Ambient temperature (assembly)          | -5 °C ... 100 °C  |
| Ambient temperature (operation)         | -40 °C ... 100 °C (Depending on the current carrying capacity/derating curve) |

### Termination and connection method

|  |                       |
|--|-----------------------|
| Connection test                          | IEC 60998-2-2:2002-12 |
| Test result                              | Test passed           |
| Test for conductor damage and slackening | IEC 60998-2-2:2002-12 |
|  | Test passed           |

### Pull-out test

|  |   |
|--|---|
| Pull-out test  | IEC 60998-2-2:2002-12                   |
| Conductor cross section / conductor type / tensile force | 0.2 mm <sup>2</sup> / solid / > 10 N    |
|  | 0.2 mm <sup>2</sup> / flexible / > 10 N |
|  | 1.5 mm <sup>2</sup> / solid / > 40 N    |
|  | 1.5 mm <sup>2</sup> / flexible / > 40 N |

### Mechanical tests according to standard

|                    |                          |
|--------------------|--------------------------|
| Test specification | IEC 60998-2-2 (in parts) |
|--------------------|--------------------------|

### Electrical tests

|                             |                     |
|-----------------------------|---------------------|
| Rated current               | 13.5 A              |
| Conductor cross section     | 1.5 mm <sup>2</sup> |
| Rated voltage (III/2)       | 160 V               |
| Rated surge voltage (III/2) | 2.5 kV              |

### Air clearances and creepage distances

|   |                     |
|---|---------------------|
| Clearances and creepage distances               | IEC 60664-1:2007-04 |
| Specification                                   | IEC 60664-1:2007-04 |
| Minimum clearance - inhomogeneous field (III/3) | 1.5 mm              |
| Minimum clearance - inhomogeneous field (III/2) | 1.5 mm              |
| Minimum clearance - inhomogeneous field (II/2)  | 1.5 mm              |
| Minimum creepage distance value (III/3)         | 2.5 mm              |
| Minimum creepage distance value (III/2)         | 1.6 mm              |
| Minimum creepage distance value (II/2)          | 3.2 mm              |

### Temperature-rise test

|               |                       |
|---------------|-----------------------|
| Specification | IEC 60998-2-1:2002-12 |
|---------------|-----------------------|

# PCB terminal block - SPT-SMD 1,5/ 2-V-3,5 R24 - 1824080

## Technical data

### Temperature-rise test

|                                   |                                     |
|-----------------------------------|-------------------------------------|
| Requirement temperature-rise test | Increase in temperature $\leq 45$ K |
|-----------------------------------|-------------------------------------|

### Current carrying capacity / derating curves

|         |   |
|---------|---|
| Caption | Type: SPT-SMD 1,5/...-V-3,5(3,81) R..<br>Tested in accordance with DIN EN 60512-5-2:2003-01<br>Reduction factor = 1<br>Number of positions: 5 |
|---------|---|

### Vibration test

|                        |                        |
|------------------------|------------------------|
| Specification          | IEC 60068-2-6:2007-12  |
| Frequency              | 10 - 150 - 10 Hz       |
| Sweep speed            | 1 octave/min           |
| Amplitude              | 0.35 mm (10 - 60.1 Hz) |
| Acceleration           | 5 g (60.1 - 150 Hz)    |
| Test duration per axis | 2.5 h                  |

### Insulation resistance

|  |                     |
|--|---------------------|
| Specification                                | IEC 60998-1:2002-12 |
| Result                                       | Test passed         |
| Insulation resistance, neighboring positions | 1 T $\Omega$        |

### Glow-wire test

|                  |                     |
|------------------|---------------------|
| Specification    | IEC 60998-1:2002-12 |
| Temperature      | 850 °C              |
| Time of exposure | 5 s                 |

### Mechanical strength/tumbling barrel test

|                       |                     |
|-----------------------|---------------------|
| Specification         | IEC 60998-1:2002-12 |
| Number of drop cycles | 50                  |

### Standards and Regulations

|  |        |
|--|--------|
| Connection in acc. with standard       | EN-VDE |
| Flammability rating according to UL 94 | V0     |

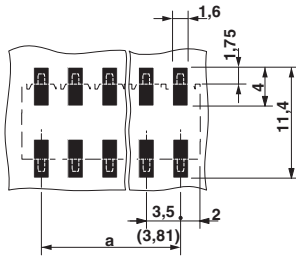
### Environmental Product Compliance

|            |   |
|------------|---|
| China RoHS | Environmentally friendly use period: unlimited = EFUP-e |
|            | No hazardous substances above threshold values          |

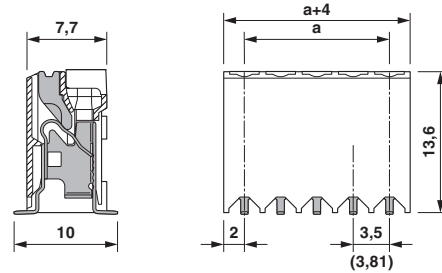
## Drawings

# PCB terminal block - SPT-SMD 1,5/ 2-V-3,5 R24 - 1824080

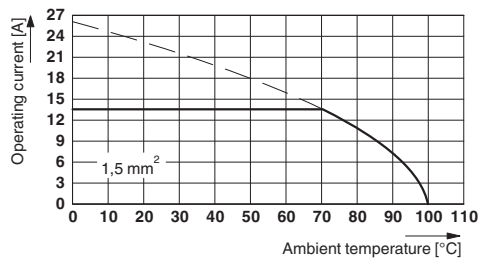
Drilling diagram



Dimensional drawing



Diagram



Type: SPT-SMD 1,5/...-V-3,5(3,81) R..  
 Tested in accordance with DIN EN 60512-5-2:2003-01  
 Reduction factor = 1  
 Number of positions: 5

## Classifications

eCl@ss

|               |          |
|---------------|----------|
| eCl@ss 10.0.1 | 27440401 |
| eCl@ss 11.0   | 27460101 |
| eCl@ss 4.0    | 27141100 |
| eCl@ss 4.1    | 27141100 |
| eCl@ss 5.0    | 27141100 |
| eCl@ss 5.1    | 27261100 |
| eCl@ss 6.0    | 27261100 |
| eCl@ss 7.0    | 27440401 |
| eCl@ss 8.0    | 27440401 |
| eCl@ss 9.0    | 27440401 |

ETIM

|          |          |
|----------|----------|
| ETIM 3.0 | EC001121 |
| ETIM 4.0 | EC002643 |
| ETIM 5.0 | EC002643 |

# PCB terminal block - SPT-SMD 1,5/ 2-V-3,5 R24 - 1824080

## Classifications

### ETIM

|          |          |
|----------|----------|
| ETIM 6.0 | EC002643 |
| ETIM 7.0 | EC002643 |

### UNSPSC

|               |          |
|---------------|----------|
| UNSPSC 6.01   | 30211801 |
| UNSPSC 7.0901 | 39121432 |
| UNSPSC 11     | 39121432 |
| UNSPSC 12.01  | 39121432 |
| UNSPSC 13.2   | 39121432 |
| UNSPSC 18.0   | 39121432 |
| UNSPSC 19.0   | 39121432 |
| UNSPSC 20.0   | 39121432 |
| UNSPSC 21.0   | 39121432 |

## Approvals


### Approvals

#### Approvals

VDE Zeichengenehmigung / IECCE CB Scheme / EAC / cULus Recognized


#### Ex Approvals


### Approval details


|                            |   |   |          |
|----------------------------|---|---|----------|
| VDE Zeichengenehmigung     |  | <a href="http://www2.vde.com/de/Institut/Online-Service/VDE-gepruefteProdukte/Seiten/Online-Suche.aspx">http://www2.vde.com/de/Institut/Online-Service/VDE-gepruefteProdukte/Seiten/Online-Suche.aspx</a> | 40046113 |
| Nominal voltage UN         | 160 V   |   |          |
| Nominal current IN         | 13.5 A  |   |          |
| mm <sup>2</sup> /AWG/kcmil | 0.2-1.5   |   |          |

# PCB terminal block - SPT-SMD 1,5/ 2-V-3,5 R24 - 1824080

## Approvals

|                            |   |   |           |
|----------------------------|---|---|-----------|
| IECEE CB Scheme            |  | <a href="http://www.iecee.org/">http://www.iecee.org/</a> | DE1-60621 |
| Nominal voltage UN         | 160 V   |   |           |
| Nominal current IN         | 13.5 A  |   |           |
| mm <sup>2</sup> /AWG/kcmil | 0.2-1.5   |   |           |

|     |   |         |
|-----|---|---------|
| EAC |  | B.01687 |
|-----|---|---------|

|                            |   |   |                 |
|----------------------------|---|---|-----------------|
| cULus Recognized           |  | <a href="http://database.ul.com/cgi-bin/XYV/template/LISEXT/1FRAME/index.htm">http://database.ul.com/cgi-bin/XYV/template/LISEXT/1FRAME/index.htm</a> | E60425-20061129 |
|                            | B   | D   |                 |
| Nominal voltage UN         | 300 V   | 300 V   |                 |
| Nominal current IN         | 10 A  | 10 A  |                 |
| mm <sup>2</sup> /AWG/kcmil | 24-16   | 24-16   |                 |

## Accessories

### Accessories

#### Cable end sleeve

Ferrule - A 0,5 - 8 - 3202481



Ferrule, length: 8 mm, color: silver

Ferrule - A 0,75- 8 - 3202504



Ferrule, length: 8 mm, color: silver



## PCB terminal block - SPT-SMD 1,5/ 2-V-3,5 R24 - 1824080

### Accessories

Ferrule - A 1 - 8 - 3202517



Ferrule, length: 8 mm, color: silver

---

Ferrule - AI 0,25- 8 YE - 3203037



Ferrule, sleeve length: 8 mm, length: 12.5 mm, color: yellow

---

Ferrule - AI 0,5 - 8 WH - 3200014



Ferrule, sleeve length: 8 mm, length: 14 mm, color: white

---

Ferrule - AI 0,5 - 8 WH -1000 - 3200881



Ferrule, sleeve length: 8 mm, length: 14 mm, color: white

---

Ferrule - AI 0,75- 8 GY - 3200519



Ferrule, sleeve length: 8 mm, length: 14 mm, color: gray

---

## PCB terminal block - SPT-SMD 1,5/ 2-V-3,5 R24 - 1824080

### Accessories

Ferrule - AI 0,75- 8 GY -1000 - 3200894



Ferrule, sleeve length: 8 mm, length: 14 mm, color: gray

---

### Crimping tool

Crimping pliers - CRIMPFOX 6 - 1212034



Crimping pliers, for ferrules without insulating collar according to DIN 46228 Part 1 and ferrules with insulating collar according to DIN 46228 Part 4, 0.25 mm<sup>2</sup> ... 6.0 mm<sup>2</sup>, lateral entry, trapezoidal crimp

---

### Printed circuit board terminal

Sample set - SAMPLE SPT-SMD 1,5/ 2-V-3,5 - 1843414



PCB terminal block, nominal current: 13.5 A, rated voltage (III/2): 160 V, nominal cross section: 1.5 mm<sup>2</sup>, Number of potentials: 2, Number of rows: 1, Number of positions per row: 2, product range: SPT 1,5/..-V-SMD, pitch: 3.5 mm, connection method: Push-in spring connection, mounting: SMD soldering, conductor/PCB connection direction: 90 °, color: black, Pin layout: Linear pad geometry, type of packaging: packed in cardboard. SAMPLE set with 5 items in belt section. When used as part of soldering process, please use items without SAMPLE marking

---

### Screwdriver tools

Screwdriver - SZS 0,4X2,5 VDE - 1205037



Screwdriver, slot-headed, VDE insulated, size: 0.4 x 2.5 x 80 mm, 2-component grip, with non-slip grip

---

### Test plug terminal block

## PCB terminal block - SPT-SMD 1,5/ 2-V-3,5 R24 - 1824080

### Accessories

Accessories - MPS-MT 1-S4-B RD - 1982800



Accessories, number of positions: 1, pitch: 0 mm