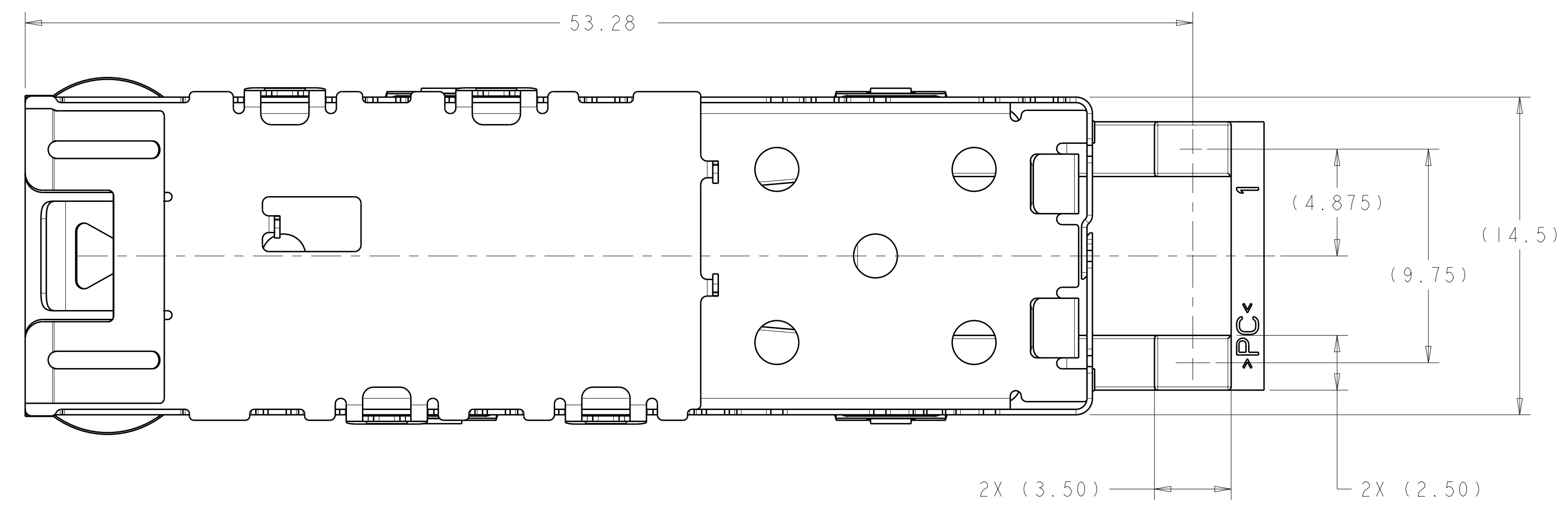
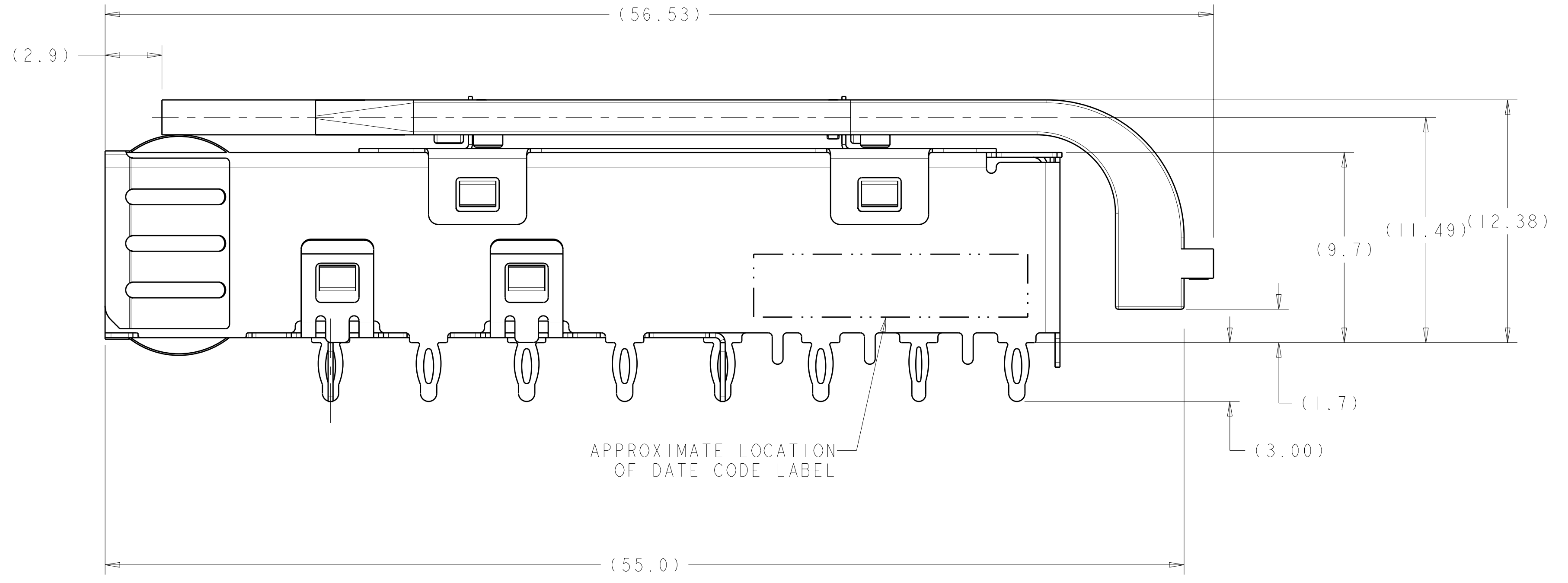
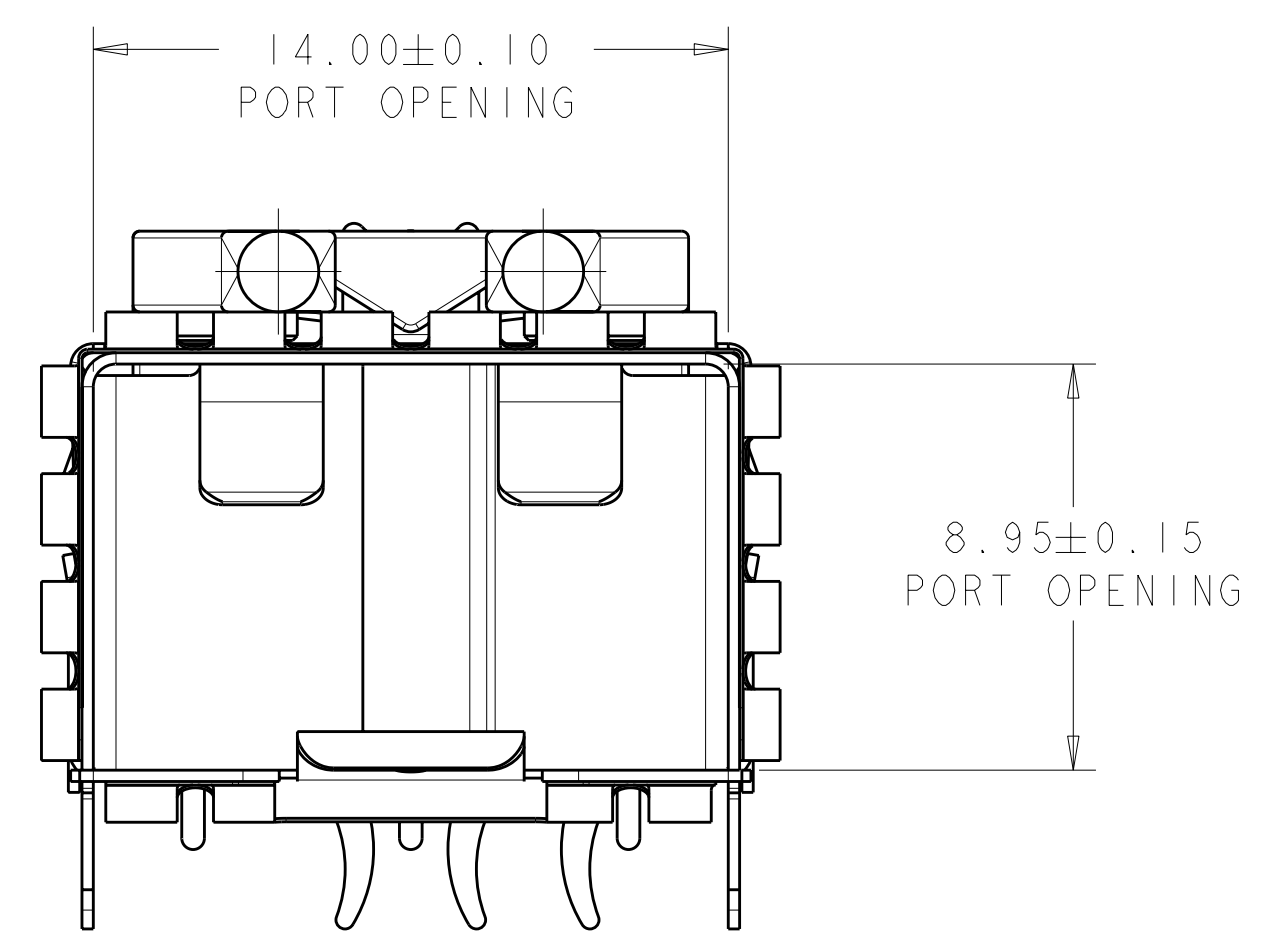
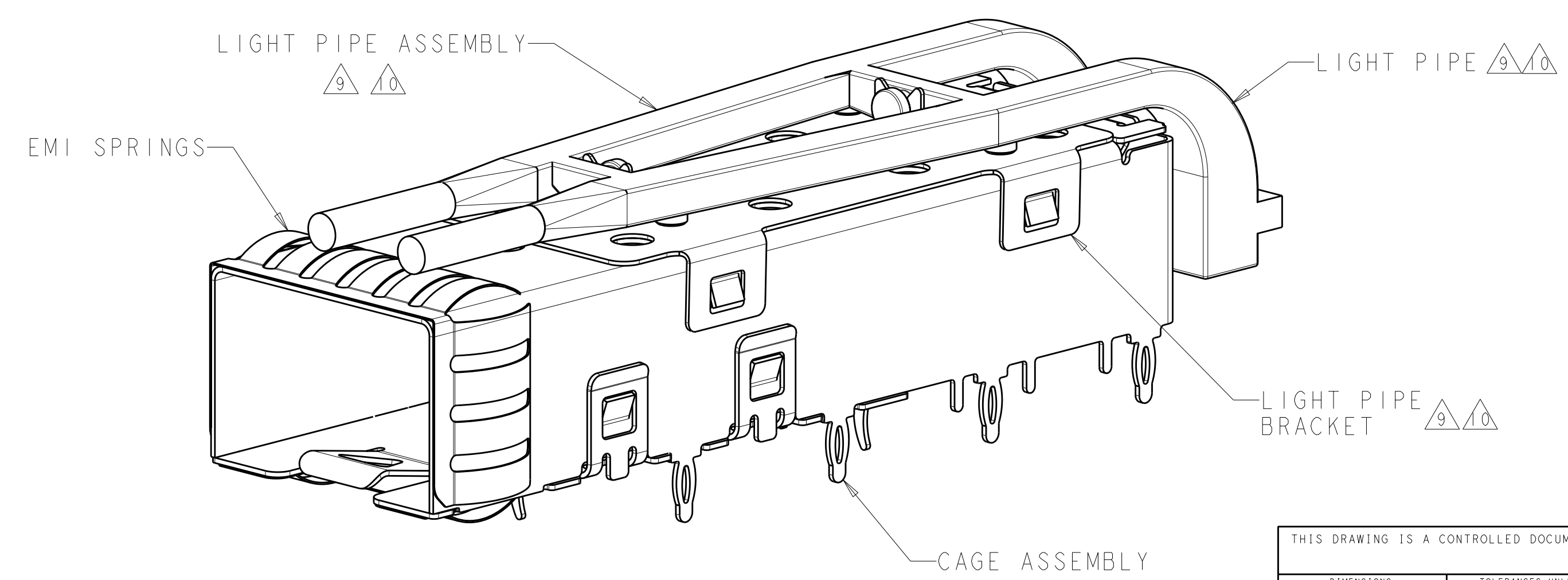


LOC	DIST	REV	DATE	BY	APPD
GP	00	1	18NOV2011	JY	AC
		2	28NOV2011	JY	AC



- 1 MATERIAL:  
 CAGE ASSEMBLY - 0.25 THICK NICKEL-SILVER ALLOY.  
 EMI SPRINGS - COPPER ALLOY.  
 LIGHT PIPE - POLYCARBONATE, CLEAR.  
 LIGHT PIPE BRACKET - STAINLESS STEEL.
- 2 FINISH:  
 EMI SPRINGS - 0.8um MIN MATTE TIN OVER 0.8um MIN NICKEL  
 NON-PLATED EDGES PERMISSIBLE.
- 3. MATES WITH SFP MSA COMPLIANT TRANSCEIVERS.
- 4 PADS AND VIAS CHASSIS GROUND.
- 5 DATUM AND BASIC DIMENSION ESTABLISHED BY CUSTOMER.
- 6. MINIMUM PC BOARD THICKNESS:  
 SINGLE SIDED: 1.50mm  
 DOUBLE SIDED: 3.00mm
- 7 REFERENCE APPLICATION SPEC. 114-13120, HOLE A, FOR  
 RECOMMENDED DRILL HOLE DIAMETER AND PLATING THICKNESS.
- 8 REFERENCE APPLICATION SPEC. 114-13120, HOLE C, FOR  
 RECOMMENDED DRILL HOLE DIAMETER AND PLATING THICKNESS.  
 INTO PCB PRIOR TO ATTACHING THE LIGHTPIPE ASSEMBLY  
 TO THE CAGE.
- 9 LIGHT PIPE ASSEMBLY SHIPPED UNASSEMBLED TO CAGE ASSEMBLY.  
 CAGE ASSEMBLY TO BE PRESSED INTO PCB PRIOR TO ATTACHING  
 THE LIGHT PIPE ASSEMBLY TO THE CAGE.
- 10 LIGHT PIPE AND LIGHT PIPE BRACKET SHIPPED ASSEMBLED.



DESIGN APPROVED THIS PRINT IS  
**PRELIMINARY**  
 TO FIRST PIECE APPROVAL  
 CONTACT PRODUCT ENGINEERING  
 BEFORE USING THIS PRINT

2170193-1  
 PART  
 NUMBER

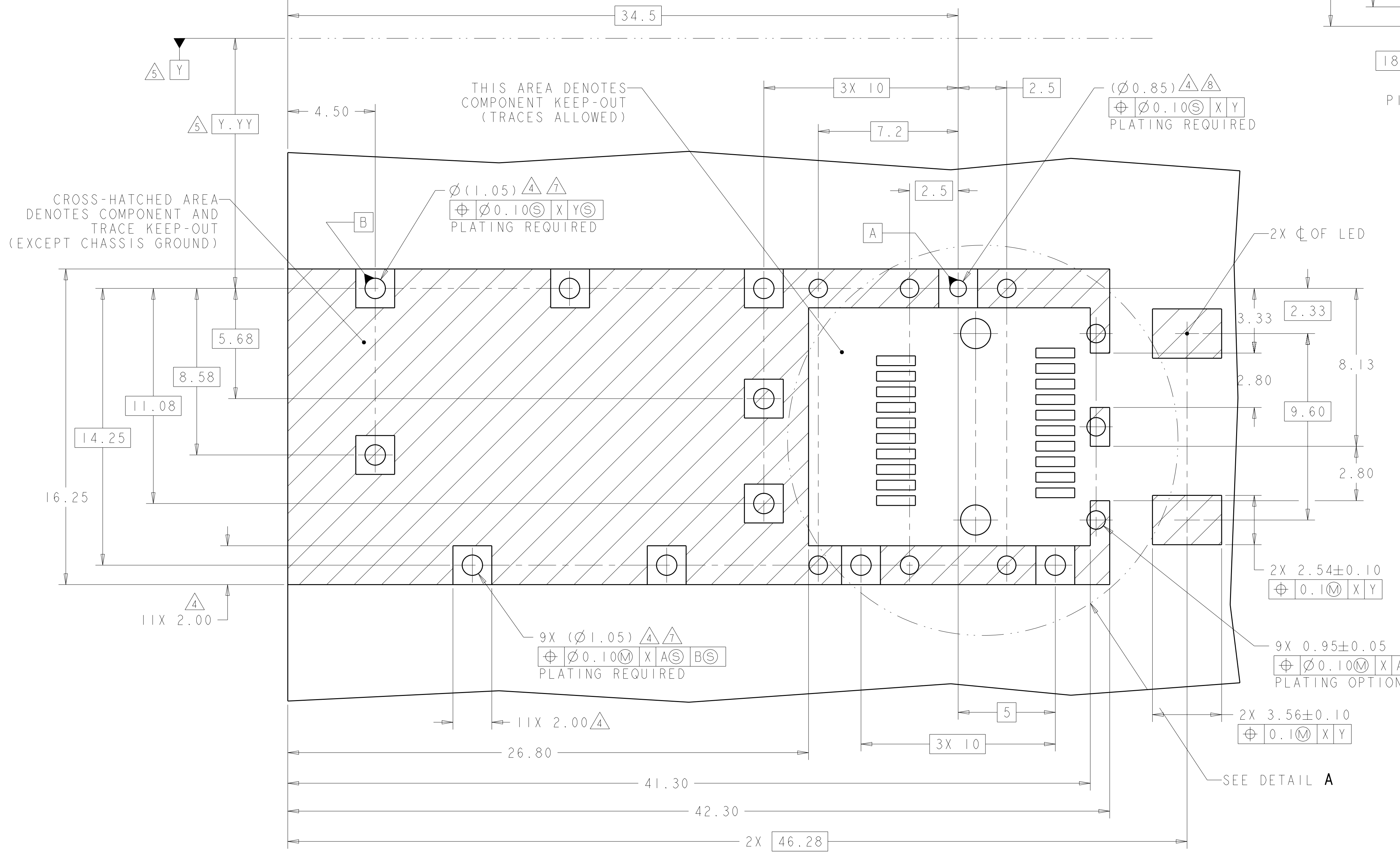
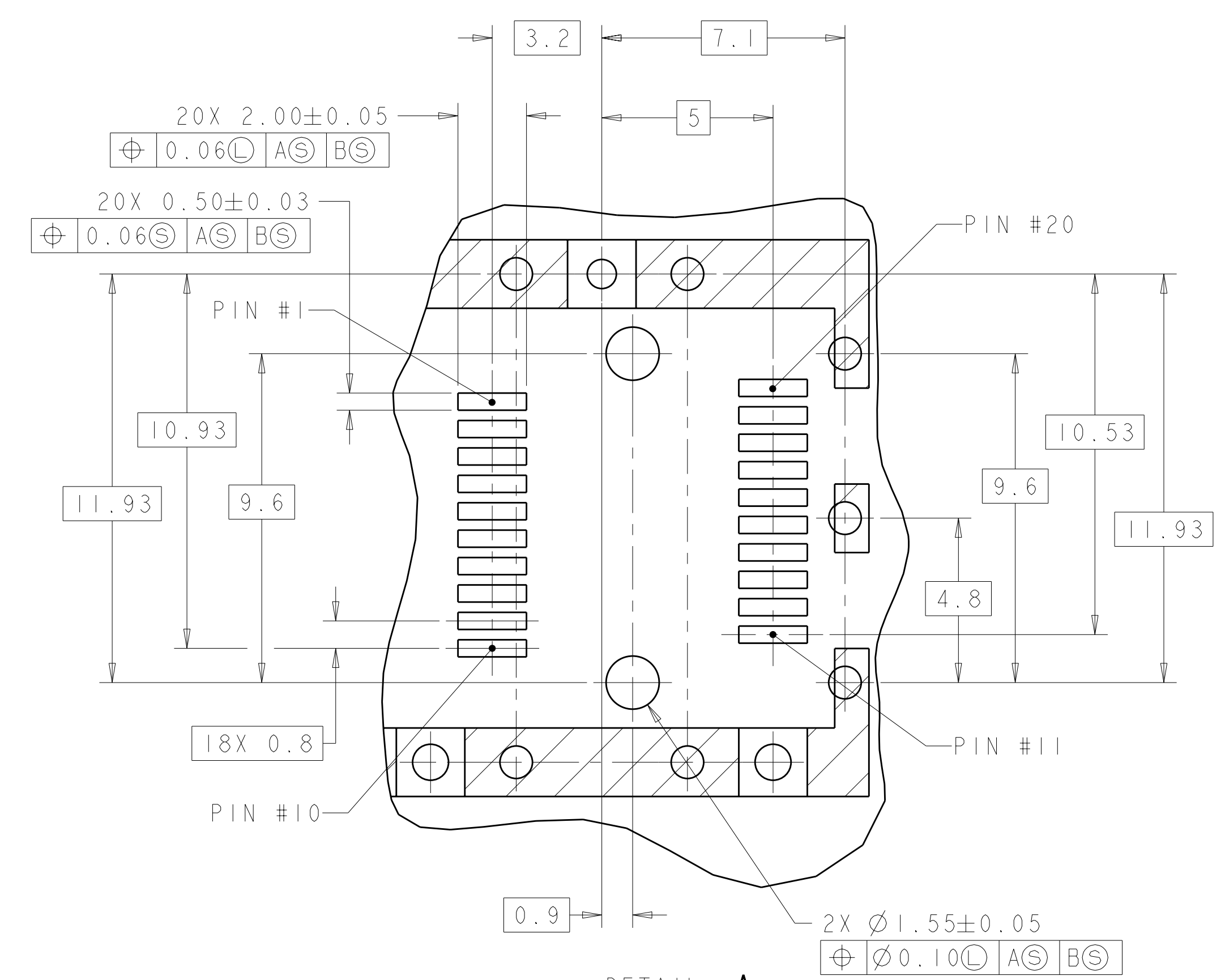
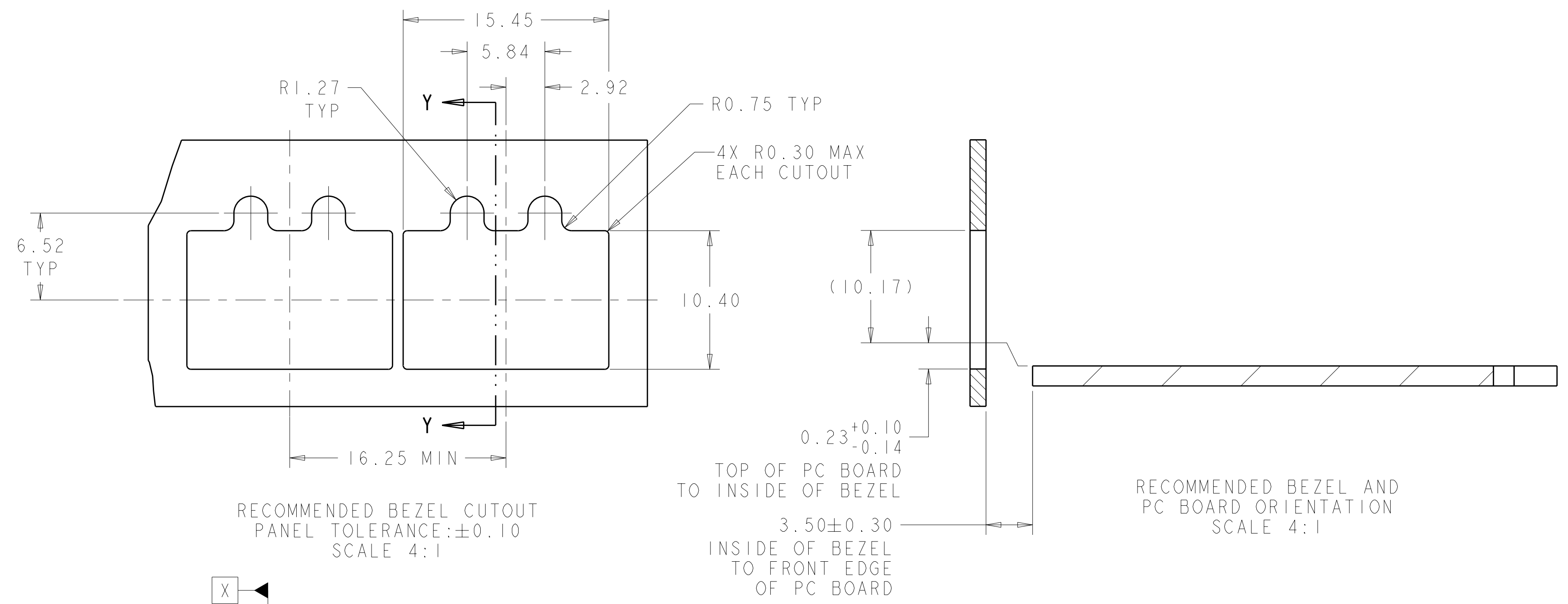
2170193-1  
 SHOWN ASSEMBLED  
 SCALE 5:1

THIS DRAWING IS A CONTROLLED DOCUMENT.		DRN: JASON YANG 18NOV2011	TE Connectivity
DIMENSIONS: mm		CHK: ALEX CAI 18NOV2011	
TOLERANCES UNLESS OTHERWISE SPECIFIED:		APPD: ALEX CAI 18NOV2011	NAME: SFP+ IX1 CAGE ASSEMBLY PRESS-FIT, EXTERNAL EMI SPRINGS, WITH LIGHT PIPES
9 PLC ±0.2	1 PLC ±0.2	PRODUCT SPEC: 108-2364	APPLICATION SPEC: 114-13120
5 PLC ±0.2	4 PLC ±	SIZE: A100779	DRAWING NO: C=2170193
ANGLES ±	FINISH	WEIGHT: -	RESTRICTED TO: -
MATERIAL	FINISH	CUSTOMER DRAWING	SCALE: 3:1 SHEET 1 OF 2 REV 2

LOC	DIST	REV	DATE	BY	APPD
GP	00				

REVISIONS		DATE	BY	APPD
1	SEE SHEET 1			



RECOMMENDED PCB LAYOUT  
PCB TOLERANCE:  $\pm 0.05$   
SCALE 8:1

THIS DRAWING IS A CONTROLLED DOCUMENT.		DWN: JASON YANG 18NOV2011	TE Connectivity
DIMENSIONS: mm		CHK: ALEX CAI 18NOV2011	
TOLERANCES UNLESS OTHERWISE SPECIFIED:		APVD: ALEX CAI 18NOV2011	NAME: SFP+ 1X1 CAGE ASSEMBLY PRESS-FIT, EXTERNAL EMI SPRINGS, WITH LIGHT PIPES
9 PLC $\pm 0.2$		PRODUCT SPEC: 108-2364	SIZE: CAGE CODE DRAWING NO: A100779C=2170193
1 PLC $\pm 0.2$		APPLICATION SPEC: 114-13120	RESTRICTED TO:
5 PLC $\pm 0.2$		WEIGHT: -	SCALE: 3:1 SHEET 2 OF 2 REV 2
4 PLC $\pm$		CUSTOMER DRAWING	
ANGLES $\pm$			
FINISH: -			

# Mouser Electronics

Authorized Distributor

Click to View Pricing, Inventory, Delivery & Lifecycle Information:

[TE Connectivity:](#)

[2170193-1](#)