

**SPECIFICATIONS:**

**MATERIALS:**

SHELL: STEEL, TIN (80u" TIN OVER 40u" COPPER)  
OR NICKEL (80u" NICKEL OVER 40u" COPPER)

INSULATOR: UL 94V-0 RATED BLACK PBT  
+30% FIBER-GLASS

CONTACTS: COPPER ALLOY, GOLD PLATED

**ELECTRICALS:**

CURRENT RATING: 5 AMPS

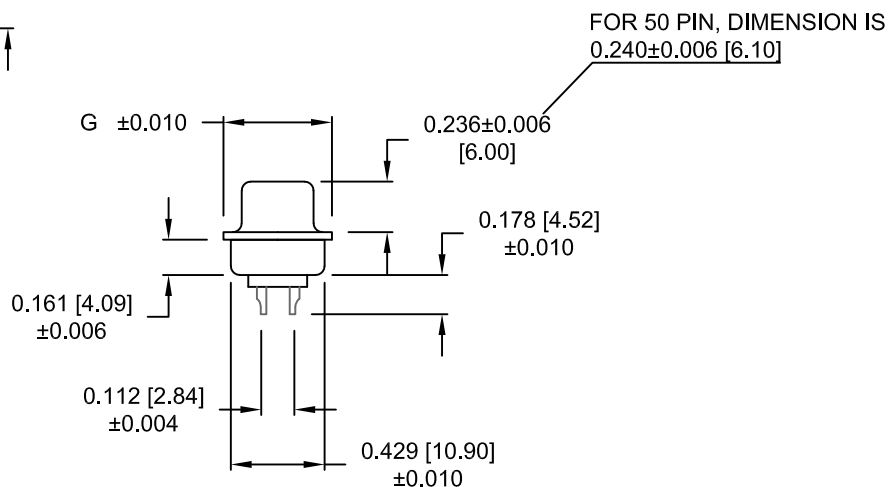
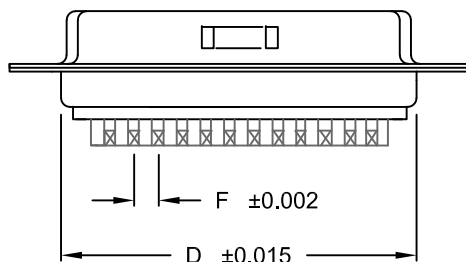
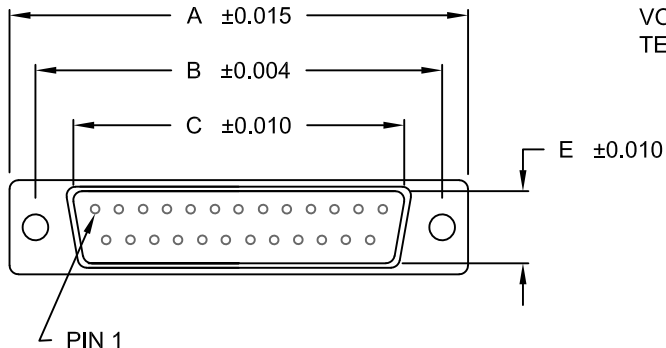
CONTACT RESISTANCE: 15 mOHMS MAX

INSULATOR RESISTANCE: 1000 MOHMS MIN

VOLTAGE: 500V AC FOR 1 MINUTE

TEMPERATURE: -50°C TO +100°C

POS.	A	B	C	D	E	F	G
09	1.213 30.80	0.984 24.99	0.666 16.92	0.756 19.20	0.329 8.36	.109 2.77	0.496 12.60
15	1.541 39.15	1.312 33.32	0.994 25.25	1.091 27.70	0.329 8.36	.109 2.77	0.496 12.60
25	2.087 53.00	1.852 47.04	1.534 38.96	1.618 41.10	0.329 8.36	.109 2.77	0.496 12.60
37	2.732 69.30	2.500 63.50	2.181 55.42	2.256 57.30	0.329 8.36	.109 2.77	0.496 12.60
50	2.638 67.00	2.406 61.00	2.079 52.80	2.169 55.10	.436 11.07	.109 2.77	.602 15.30



171-YYY-10YLYY1

SERIES \_\_\_\_\_

POSITIONS \_\_\_\_\_

009  
015  
025  
037  
050

GENDER \_\_\_\_\_

1 = MALE  
2 = FEMALE

TERMINATION \_\_\_\_\_

0 = SOLDER CUP

SHELL PLATING \_\_\_\_\_

2 = TIN  
3 = NICKEL

HARDWARE OPTIONS \_\_\_\_\_

00 = NO HARDWARE  
01 = .098 4-40 CLINCH NUT BOARD SIDE  
02 = .236 4-40 CLINCH NUT BOARD SIDE  
03 = .236 4-40 CLINCH NUT MATING SIDE  
05 = .237 4-40 BOARD LOCK  
91 = .237 4-40 SPACER/BOARD LOCK

PLATING OPTIONS \_\_\_\_\_

1 = GOLD FLASH  
2 = 30 MICRO-INCH GOLD

WILL ACCEPT 28-20 AWG CONDUCTORS

RoHS COMPLIANT

UNITS = INCHES [MM] DO NOT SCALE FROM DRAWING



THESE DRAWINGS AND SPECIFICATIONS ARE THE PROPERTY OF NorComp AND SHALL NOT BE REPRODUCED, COPIED OR USED AS THE BASIS FOR THE MANUFACTURE OR SALE OF APPARATUS WITHOUT WRITTEN PERMISSION.

DRAWN:

J. KADEL

DATE:

07/24/2018

NorComp

SCALE:

NTS

SHEET

OF

1

2

REV

12

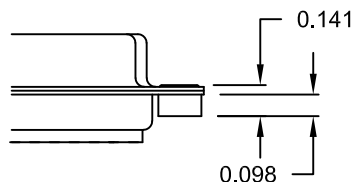
DWG NO.

171-YYY-10YLYY1

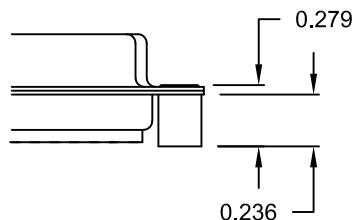
**TOLERANCE:**  
ALL DIMENSIONS ARE ±0.010

**ALL CLINCH-NUTS ARE 4-40 INTERNAL THREADS**

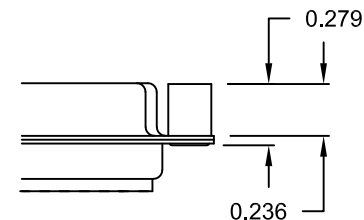
01X ..... 0.098" (BOARD SIDE) - CN1



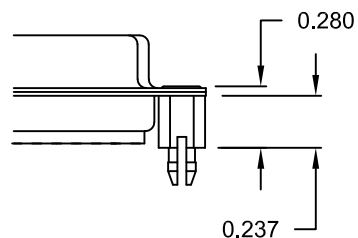
02X ..... 0.236" (BOARD SIDE) - CN2



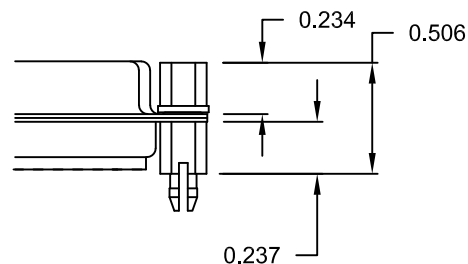
03X..... 0.236" (MATING SIDE) - CN8



05X ..... 0.237" (BOARD SIDE) - CN10



91X ..... 0.237" BOARD SIDE  
0.197" MATING SIDE  
CN10/SFSO4404



NOTE: 4-40 FEMALE SCREW LOCK IS REMOVABLE

**RoHS COMPLIANT**

UNITS = INCHES [MM] **DO NOT SCALE FROM DRAWING**



THESE DRAWINGS AND SPECIFICATIONS ARE THE PROPERTY OF NorComp AND SHALL NOT BE REPRODUCED, COPIED OR USED AS THE BASIS FOR THE MANUFACTURE OR SALE OF APPARATUS WITHOUT WRITTEN PERMISSION.

DRAWN:  
J. KADEL

DATE:  
07/24/2018

**NorComp**

SCALE:  
NTS

SHEET OF  
2 2

REV  
12

DWG NO.

171-YYY-10YLYY1