



Quality Products. Service Excellence.

Type 4X Diecast Aluminum Enclosures 1590Z Series

Watertight, Thick Wall, UL Listed

Key Features



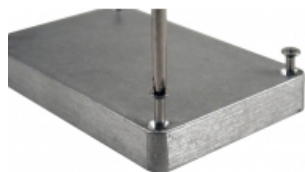
- Rugged, diecast aluminum alloy (tough yet easy to machine), electronic instrument enclosure.
- Two piece "tongue & groove" construction with a one piece silicone rubber gasket provides protection against access of dust and water.
- Ideal for repetitive opening and closing.
- Four recessed stainless steel machine screws secure lid into tapped holes.
- Easy to wall mount using "through box - blind hole" construction, outside of gasket protection.
- Lid screws are self capturing (lid holes are threaded with the first installation of lid screws). (NOTE: Except for **1590Z060**, **1590Z061**, **1590Z062**, and **1590Z063**)
- Designed to meet IP66.
- North American Mark of Safety - cUL & UL listed. Certified to NEMA 4X standards (UL 508A) - File #E65324 (NOTE: Except for **1590Z140**, **1590Z235** & **1590Z164**)
- Painted versions are painted inside and out with a tough powder paint. Choice of satin black or smooth grey (RAL 7001).
- For non-metallic (glass reinforced polyester) versions of these enclosures, see series **1590ZGRP**



Photos

Available unfinished or powder coated in textured black or smooth gray.





Lid screws are self capturing (lid is threaded with first installation of screws)

Lid screws and wall mounting holes are outside the gasket channel.

Accessories

- Pole Mount Kit
- Breather Kit
- Liquid-Tight, Strain Relief Cordgrips
- Pressure Compensation Plug
- Small Rainproof Ventilator

Enclosure

Part Number	Color	Internal Mounting Shelf	cUL & UL Listed	Enclosure			Lid Thickness	Inner Panel	Extra Panel Screws	Replacement Gasket
				Length	Width	Depth (Less Lid)				
1590Z060	Natural	NO	Listed	1.98	1.77	0.95	0.24		SCG060	1590Z060G
1590Z060BK	Black	NO	Listed	1.98	1.77	0.95	0.24		SCG060	1590Z060G
1590Z060GY	Grey	NO	Listed	1.98	1.77	0.95	0.24		SCG060	1590Z060G
1590Z061	Natural	NO	Listed	2.51	2.29	1.03	0.39		SCG060	1590Z061G
1590Z061BK	Black	NO	Listed	2.51	2.29	1.03	0.39		SCG060	1590Z061G
1590Z061GY	Grey	NO	Listed	2.51	2.29	1.03	0.39		SCG060	1590Z061G
1590Z100	Natural	YES	Listed	2.94	3.14	1.57	0.47	1590Z100PL	SCGM4	1590Z100G
1590Z100BK	Black	YES	Listed	2.94	3.14	1.57	0.47	1590Z100PL	SCGM4	1590Z100G
1590Z100GY	Grey	YES	Listed	2.94	3.14	1.57	0.47	1590Z100PL	SCGM4	1590Z100G
1590Z110	Natural	NO	Listed	2.94	3.14	1.57	0.47		SCGM4	1590Z100G
1590Z110BK	Black	NO	Listed	2.94	3.14	1.57	0.47		SCGM4	1590Z100G
1590Z110GY	Grey	NO	Listed	2.94	3.14	1.57	0.47		SCGM4	1590Z100G
1590Z062	Natural	NO	Listed	3.86	2.52	1.03	0.39	1590Z100PL	SCG060	1590Z062G
1590Z062BK	Black	NO	Listed	3.86	2.52	1.03	0.39	1590Z100PL	SCG060	1590Z062G
1590Z062GY	Grey	NO	Listed	3.86	2.52	1.03	0.39	1590Z100PL	SCG060	1590Z062G
1590Z119	Natural	YES	Listed	4.80	4.72	2.36	0.80	1590Z119PL	SCGM6	1590Z119G
1590Z119BK	Black	YES	Listed	4.80	4.72	2.36	0.80	1590Z119PL	SCGM6	1590Z119G
1590Z119GY	Grey	YES	Listed	4.80	4.72	2.36	0.80	1590Z119PL	SCGM6	1590Z119G
1590Z120	Natural	YES	Listed	4.90	3.15	1.75	0.61	1590Z120PL	SCGM4	1590Z120G
1590Z120BK	Black	YES	Listed	4.90	3.15	1.75	0.61	1590Z120PL	SCGM4	1590Z120G
1590Z120GY	Grey	YES	Listed	4.90	3.15	1.75	0.61	1590Z120PL	SCGM4	1590Z120G
1590Z063	Natural	NO	Listed	5.89	2.51	1.03	0.39		SCG060	1590Z063G
1590Z063BK	Black	NO	Listed	5.89	2.51	1.03	0.39		SCG060	1590Z063G
1590Z063GY	Grey	NO	Listed	5.89	2.51	1.03	0.39		SCG060	1590Z063G
1590Z160	Natural	YES	Listed	6.30	6.30	2.76	0.79	1590Z160PL	SCGM6	1590Z160G
1590Z160BK	Black	YES	Listed	6.30	6.30	2.76	0.79	1590Z160PL	SCGM6	1590Z160G
1590Z160GY	Grey	YES	Listed	6.30	6.30	2.76	0.79	1590Z160PL	SCGM6	1590Z160G
1590Z130	Natural	NO	Listed	6.91	3.15	1.65	0.45		SCGM4	1590Z130G
1590Z130BK	Black	NO	Listed	6.91	3.15	1.65	0.45		SCGM4	1590Z130G

Part Number	Color	Internal Mounting Shelf	cUL & UL Listed	Enclosure			Lid Thickness	Inner Panel	Extra Panel Screws	Replacement Gasket
				Length	Width	Depth (Less Lid)				
1590Z130GY	Grey	NO	Listed	6.91	3.15	1.65	0.45		SCGM4	1590Z130G
1590Z135	Natural	NO	Listed	6.91	3.15	1.65	0.79		SCGM4	1590Z130G
1590Z135BK	Black	NO	Listed	6.91	3.15	1.65	0.79		SCGM4	1590Z130G
1590Z135GY	Grey	NO	Listed	6.91	3.15	1.65	0.79		SCGM4	1590Z130G
1590Z150	Natural	YES	Listed	8.70	4.74	2.39	0.79	1590Z150PL	SCGM6	1590Z150G
1590Z150BK	Black	YES	Listed	8.70	4.74	2.39	0.79	1590Z150PL	SCGM6	1590Z150G
1590Z150GY	Grey	YES	Listed	8.70	4.74	2.39	0.79	1590Z150PL	SCGM6	1590Z150G
1590Z155	Natural	YES	Listed	8.70	4.72	3.58	1.18	1590Z150PL	SCGM6	1590Z150G
1590Z155BK	Black	YES	Listed	8.70	4.72	3.58	1.18	1590Z150PL	SCGM6	1590Z150G
1590Z155GY	Grey	YES	Listed	8.70	4.72	3.58	1.18	1590Z150PL	SCGM6	1590Z150G
1590Z231	Natural	YES	Listed	9.06	7.87	3.63	0.80	1590Z231PL	SCGM6	1590Z231G
1590Z231BK	Black	YES	Listed	9.06	7.87	3.63	0.80	1590Z231PL	SCGM6	1590Z231G
1590Z231GY	Grey	YES	Listed	9.06	7.87	3.63	0.80	1590Z231PL	SCGM6	1590Z231G
1590Z140	Natural	YES	NOT Listed (Pending)	9.85	3.13	1.57	0.59	1590Z140PL	SCGM6	1590Z140G
1590Z140BK	Black	YES	NOT Listed (Pending)	9.85	3.13	1.57	0.59	1590Z140PL	SCGM6	1590Z140G
1590Z140GY	Grey	YES	NOT Listed (Pending)	9.85	3.13	1.57	0.59	1590Z140PL	SCGM6	1590Z140G
1590Z162	Natural	YES	Listed	10.24	6.25	2.75	0.79	1590Z162PL	SCGM6	1590Z162G
1590Z162BK	Black	YES	Listed	10.24	6.25	2.75	0.79	1590Z162PL	SCGM6	1590Z162G
1590Z162GY	Grey	YES	Listed	10.24	6.25	2.75	0.79	1590Z162PL	SCGM6	1590Z162G
1590Z235	Natural	YES	NOT Listed (Pending)	13.07	9.13	4.36	0.79	1590Z235PL	SCGM6	1590Z235G
1590Z235BK	Black	YES	NOT Listed (Pending)	13.07	9.13	4.36	0.79	1590Z235PL	SCGM6	1590Z235G
1590Z235GY	Grey	YES	NOT Listed (Pending)	13.07	9.13	4.36	0.79	1590Z235PL	SCGM6	1590Z235G
1590Z166	Natural	YES	Listed	14.17	6.30	2.76	0.79	1590Z166PL	SCGM6	1590Z166G
1590Z166BK	Black	YES	Listed	14.17	6.30	2.76	0.79	1590Z166PL	SCGM6	1590Z166G
1590Z166GY	Grey	YES	Listed	14.17	6.30	2.76	0.79	1590Z166PL	SCGM6	1590Z166G
1590Z164	Natural	YES	NOT Listed (Pending)	14.23	4.72	2.38	0.79	1590Z164PL	SCGM6	1590Z164G
1590Z164BK	Black	YES	NOT Listed (Pending)	14.23	4.72	2.38	0.79	1590Z164PL	SCGM6	1590Z164G
1590Z164GY	Grey	YES	NOT Listed (Pending)	14.23	4.72	2.38	0.79	1590Z164PL	SCGM6	1590Z164G

Data subject to change without notice

© 2017. Hammond Manufacturing Ltd. All rights reserved.