



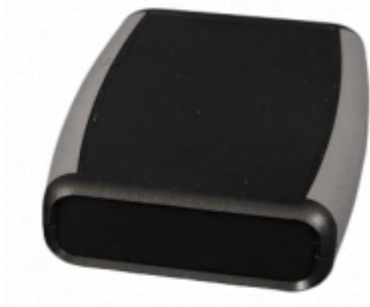
Quality Products. Service Excellence.

ABS Plastic Hand Held Enclosures 1553 Series

Soft Sided, Ergonomic Comfort, Battery Compartments

Key Features:

- Ergonomically designed for hand-held comfort.
- Choice of five sizes and six color combinations.
- Choice of two versions in the three larger sizes (ie...with or without battery door & compartment)
- Molded in general purpose ABS plastic with an overmold, soft plastic grip.
- Top cover is recessed for membrane display or keypad.
- P.C. board standoffs are molded into case (see drawings or photos for more details).
- Includes removable front panel (for easy modifications) and assembly hardware (except for smallest 1553A units).
- Battery door & compartment version includes 4 battery clips (for 2 - AA batteries) and a 9 volt (PP3) battery clip.
- Gray 1553 series enclosures include nickel plated screws. All other color use black screws. Refer to product datasheets for correct part numbers.
- For similar enclosures designed for water-tight applications, try series **1553W**



Ask About
Enclosure
Modification
Services



 **RoHS**

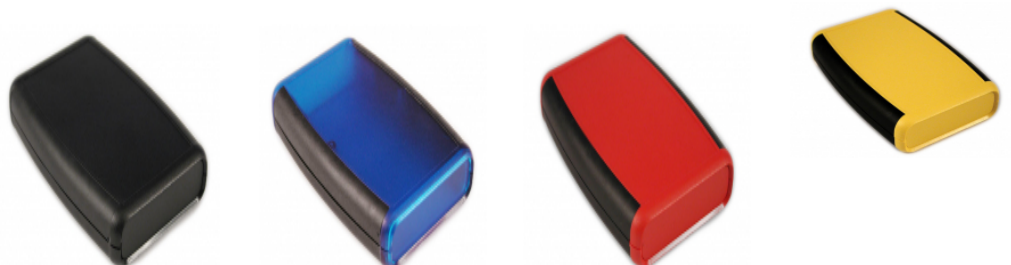
Photo Features:

Perfect for handheld use.

Battery version comes with clips for AA for 9V.



Additional Color Combinations Available



Accessories:



ProtoBoard Printed Circuit Boards:

- High quality FR4 glass epoxy board
- Specifically designed to fit enclosures shown in the table below
- Mounting screws included
- Lead free etched copper PCB with a flux coating for easy soldering
- 0.042" holes drilled on 0.1" centers
- For more information link to the BPS (BusBoard Prototype Systems) website www.busboard.com

1553BPCB - works with 1553 sizes "B" and "C"

1553DBPCB - works with 1553 size "D"

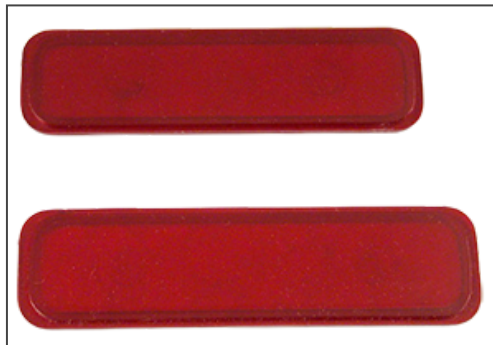


Belt/ Pocket Clip Option:

- Molded from touch nylon
- Includes 2 nylon screws (insulated to avoid interference)
- Mounting Template Included (user drilling required)

1599CLIP (black)

1599CLIPGY (gray)



IR End Panels

- Replaces existing front plastic panel.
- Dark red plastic filter (transparent to IR).

For all 1553 "B" sized enclosures - Part Number **1553BIR-BULK**

For all 1553 "D" sized enclosures - Part Number **1553DIR-BULK**

Without Battery Doors & Compartments

| Part Number | Enclosure Color | Overmold Color | Overall Dimensions | | | Max. P.C. Board | |
|-------------------|-----------------|----------------|--------------------|-------|-------|-----------------|-------|
| | | | Length | Width | Depth | Length | Width |
| 1553AABK | Black | Gray | 2.95 | 1.97 | 0.67 | 2.73 | 1.65 |
| 1553AAGY | Grey | Gray | 2.95 | 1.97 | 0.67 | 2.73 | 1.65 |
| 1553ABK | Black | Gray | 3.94 | 2.41 | 0.67 | 3.73 | 1.90 |
| 1553AGY | Grey | Gray | 3.94 | 2.41 | 0.67 | 3.73 | 1.90 |
| 1553BBK | Black | Gray | 4.62 | 3.11 | 0.95 | 4.30 | 2.40 |
| 1553BGY | Grey | Gray | 4.62 | 3.11 | 0.95 | 4.30 | 2.40 |
| 1553BBKBK | Black | Black | 4.62 | 3.11 | 0.95 | 4.30 | 2.40 |
| 1553BTBUBK | Trans Blue | Black | 4.62 | 3.11 | 0.95 | 4.30 | 2.40 |
| 1553BRDBK | Red | Black | 4.62 | 3.11 | 0.95 | 4.30 | 2.40 |
| 1553BYLBK | Yellow | Black | 4.62 | 3.11 | 0.95 | 4.30 | 2.40 |
| 1553CBK | Black | Gray | 4.62 | 3.11 | 1.30 | 4.30 | 2.40 |

| Part Number | Enclosure | Overmold | Overall Dimensions | | | Max. P.C. Board | |
|-------------|------------|----------|--------------------|-------|-------|-----------------|-------|
| | Color | Color | Length | Width | Depth | Length | Width |
| 1553CGY | Grey | Gray | 4.62 | 3.11 | 1.30 | 4.30 | 2.40 |
| 1553DBK | Black | Gray | 5.80 | 3.50 | 0.98 | 5.48 | 2.65 |
| 1553DGY | Grey | Gray | 5.80 | 3.50 | 0.98 | 5.48 | 2.65 |
| 1553DBKBK | Black | Black | 5.80 | 3.50 | 0.98 | 5.48 | 2.65 |
| 1553DTBUBK | Trans Blue | Black | 5.80 | 3.50 | 0.98 | 5.48 | 2.65 |
| 1553DRDBK | Red | Black | 5.80 | 3.50 | 0.98 | 5.48 | 2.65 |
| 1553DYLBK | Yellow | Black | 5.80 | 3.50 | 0.98 | 5.48 | 2.65 |

With Battery Doors & Compartments

| Part Number | Enclosure | Overmold | Overall Dimensions | | | Max. P.C. Board | |
|---------------|------------|----------|--------------------|-------|-------|-----------------|-------|
| | Color | Color | Length | Width | Depth | Length | Width |
| 1553BBKBAT | Black | Gray | 4.62 | 3.11 | 0.95 | 3.08 | 2.40 |
| 1553BGYBAT | Grey | Gray | 4.62 | 3.11 | 0.95 | 3.08 | 2.40 |
| 1553BBKBKBAT | Black | Black | 4.62 | 3.11 | 0.95 | 4.30 | 2.40 |
| 1553BTBUBKBAT | Trans Blue | Black | 4.62 | 3.11 | 0.95 | 4.30 | 2.40 |
| 1553BRDBKBAT | Red | Black | 4.62 | 3.11 | 0.95 | 4.30 | 2.40 |
| 1553BYLBKBAT | Yellow | Black | 4.62 | 3.11 | 0.95 | 4.30 | 2.40 |
| 1553CBKBAT | Black | Gray | 4.62 | 3.11 | 1.30 | 4.30 | 2.40 |
| 1553CGYBAT | Grey | Gray | 4.62 | 3.11 | 1.30 | 4.30 | 2.40 |
| 1553DBKBAT | Black | Gray | 5.80 | 3.50 | 0.98 | 4.20 | 2.65 |
| 1553DGYBAT | Grey | Gray | 5.80 | 3.50 | 0.98 | 4.20 | 2.65 |
| 1553DBKBKBAT | Black | Black | 5.80 | 3.50 | 0.98 | 4.20 | 2.65 |
| 1553DTBUBKBAT | Trans Blue | Black | 5.80 | 3.50 | 0.98 | 4.20 | 2.65 |
| 1553DRDBKBAT | Red | Black | 5.80 | 3.50 | 0.98 | 4.20 | 2.65 |
| 1553DYLBKBAT | Yellow | Black | 5.80 | 3.50 | 0.98 | 4.20 | 2.65 |

Extra End Panels (10-packs)

| Enclosure Size | Black | Gray | Red | Translucent Blue | Yellow |
|----------------|--------------|--------------|--------------|------------------|--------------|
| 1553B | 1553BPLBK-10 | 1553BPLGY-10 | 1553BPLRD-10 | 1553BPLTBU-10 | 1553BPLYL-10 |
| 1553C | 1553CPLBK-10 | 1553CPLGY-10 | | | |
| 1553D | 1553DPLBK-10 | 1553DPLGY-10 | 1553DPLRD-10 | 1553DPLTBU-10 | 1553DPLYL-10 |

Extra Battery Doors (5-packs)

| Enclosure Size | Black | Gray | Red | Translucent Blue | Yellow |
|-------------------------------|---------------|---------------|---------------|------------------|---------------|
| All 1553's with battery doors | 53BATDOORBK-5 | 53BATDOORGY-5 | 53BATDOORRD-5 | 53BATDOORTBU-5 | 53BATDOORYL-5 |

Data subject to change without notice