

**PLEASE CHECK WWW.MOLEX.COM FOR LATEST PART INFORMATION**

**Part Number:** [1510481401](#)  
**Status:** **Active**  
**Overview:** CP-6.5 Wire-to-Board Connector System  
**Description:** CP-6.5 Header, 6.50mm Pitch, Dual Row, Vertical, Polarized, Positive Lock, Tray Packaging, 4 Circuits, Blue

**Documents:**

[3D Model](#) [Packaging Specification PK-151048-0002 \(PDF\)](#)  
[Drawing \(PDF\)](#) [RoHS Certificate of Compliance \(PDF\)](#)

**Agency Certification**

UL E29179

**General**

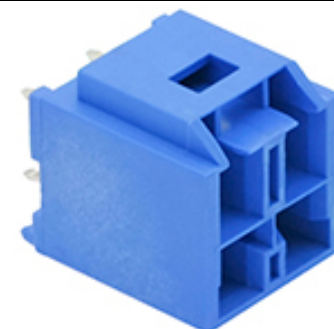
Product Family PCB Headers  
 Series [151048](#)  
 Application Wire-to-Board  
 Comments See Product Specification for maximum current rating by circuit size and wire AWG  
 Overview [CP-6.5 Wire-to-Board Connector System](#)  
 Product Name CP-6.5  
 UPC 889056066716

**Physical**

Breakaway No  
 Circuits (Loaded) 4  
 Circuits (maximum) 4  
 Color - Resin Blue  
 Durability (mating cycles max) 30  
 First Mate / Last Break No  
 Flammability 94V-0  
 Glow-Wire Compliant No  
 Guide to Mating Part No  
 Keying to Mating Part Yes  
 Lock to Mating Part Yes  
 Material - Metal Copper Alloy  
 Material - Plating Mating Matte Tin  
 Material - Plating Termination Matte Tin  
 Material - Resin Polyamide  
 Net Weight 2.884/g  
 Number of Rows 2  
 Orientation Vertical  
 PC Tail Length 3.80mm  
 PCB Locator Yes  
 PCB Retention Yes  
 PCB Thickness - Recommended 1.60mm  
 Packaging Type Tray  
 Pitch - Mating Interface 6.50mm  
 Plating min - Mating 1.270µm  
 Plating min - Termination 1.270µm  
 Polarized to Mating Part Yes  
 Polarized to PCB Yes  
 Temperature Range - Operating -40°C to +105°C  
 Termination Interface: Style Through Hole

**Electrical**

Current - Maximum per Contact 10.0A



*Series image - Reference only*

**EU ELV**

**Not Relevant**

**EU RoHS**

**Compliant**

**China RoHS**

**REACH SVHC**

Not Contained Per -  
 ED/21/2016 (20 June  
 2016)

**Halogen-Free**

**Status**

**Not Low-Halogen**

**Need more information on product  
 environmental compliance?**

Email [productcompliance@molex.com](mailto:productcompliance@molex.com)  
 Please visit the [Contact Us](#) section for any  
 non-product compliance questions.

China ROHS Green Image  
 ELV Not Relevant  
 RoHS Phthalates Not Contained

**Search Parts in this Series**

[151048 Series](#)

**Mates With**

CP-6.5 Receptacle Housing [151049-2401](#)

Voltage - Maximum	600V
<b>Solder Process Data</b>	
Lead-free Process Capability	WAVE
<b>Material Info</b>	
<b>Reference - Drawing Numbers</b>	
Packaging Specification	PK-151048-0002
Sales Drawing	SD-151048-0001

This document was generated on 11/21/2016

**PLEASE CHECK [WWW.MOLEX.COM](http://WWW.MOLEX.COM) FOR LATEST PART INFORMATION**