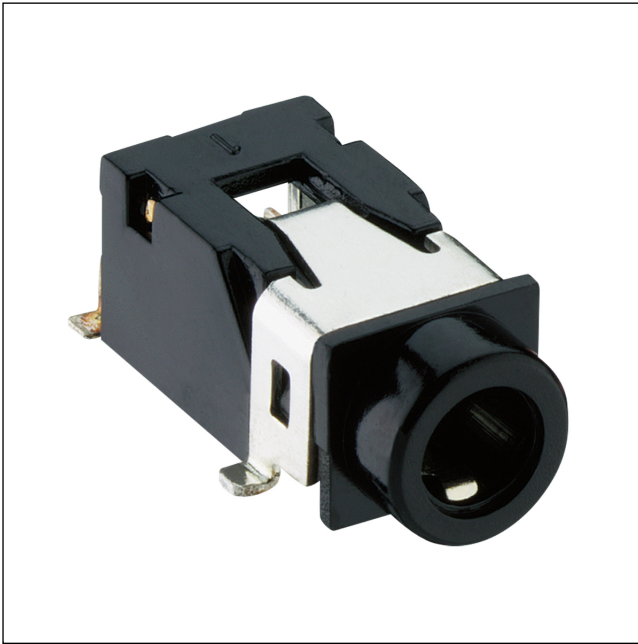


15

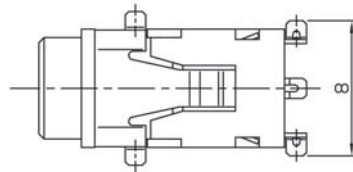
1503 13

Jack connectors



Jack chassis socket according to JEITA RC-5325A JC35J4A,
3.5 mm, 4 poles/stereo, angular version, for printed circuit
boards, surface mount technology (SMT)

State: Active



Environmental conditions

Temperature range -20 °C/+70 °C

Materials

Insulating body PPA GF, V-0 according to UL94
Contact spring Cu alloy, silver-plated

Mechanical data

Mating cycles 5000
Insertion force 4,9–24,5 N¹
Withdrawal force 3,9–14,7 N¹

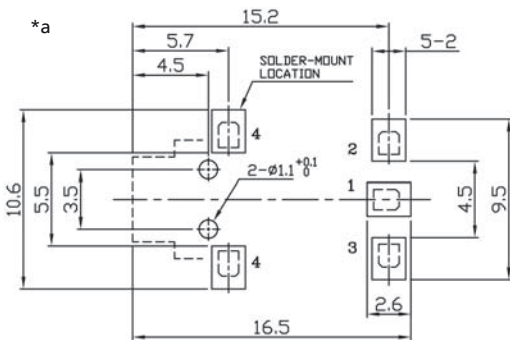
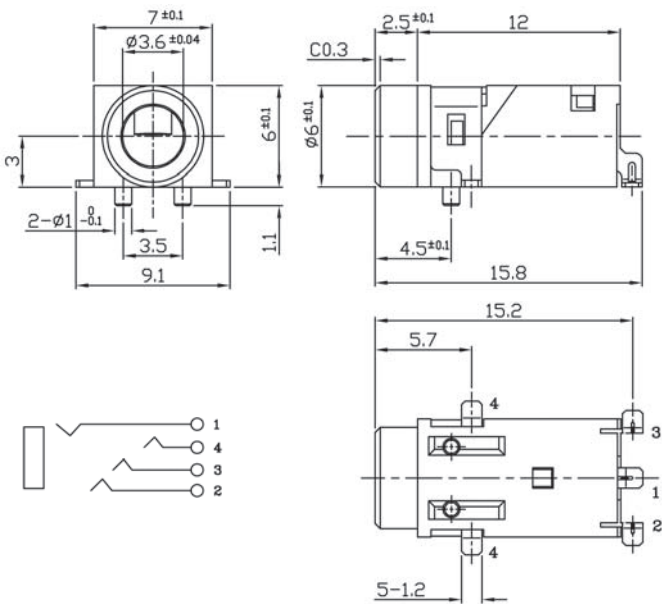
¹ measured with a gauge plug

Electrical data (at T_{amb} 20 °C)

Contact resistance ≤ 30 mΩ
Rated current 1 A
Rated voltage 12 V DC
Rated impulse voltage 500 V/60 s
Insulation resistance ≥ 100 MΩ

Associated products

Counterparts
☞ 1532 02



15

1503 13

*a printed circuit board layout, components side view

15

1503 13

Designation	Pole Number	PU (Pieces)	MDQ (Pieces)
1503 13 VP3	4	500	1000

Packaging:

on reel