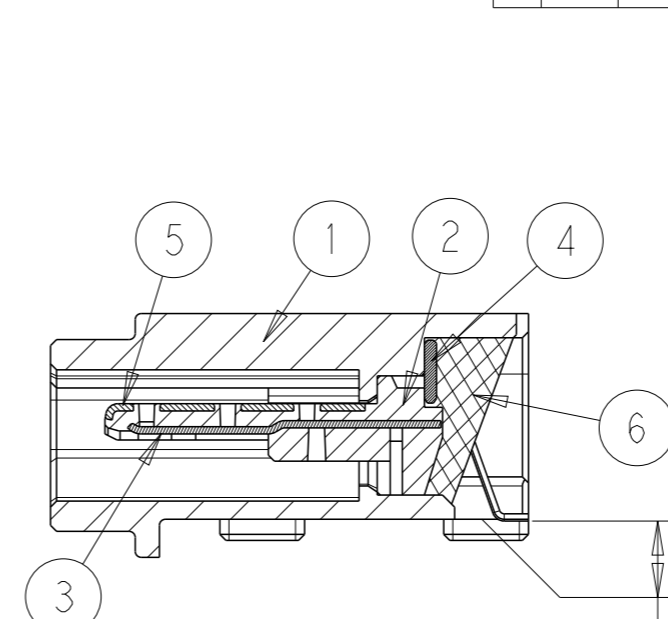
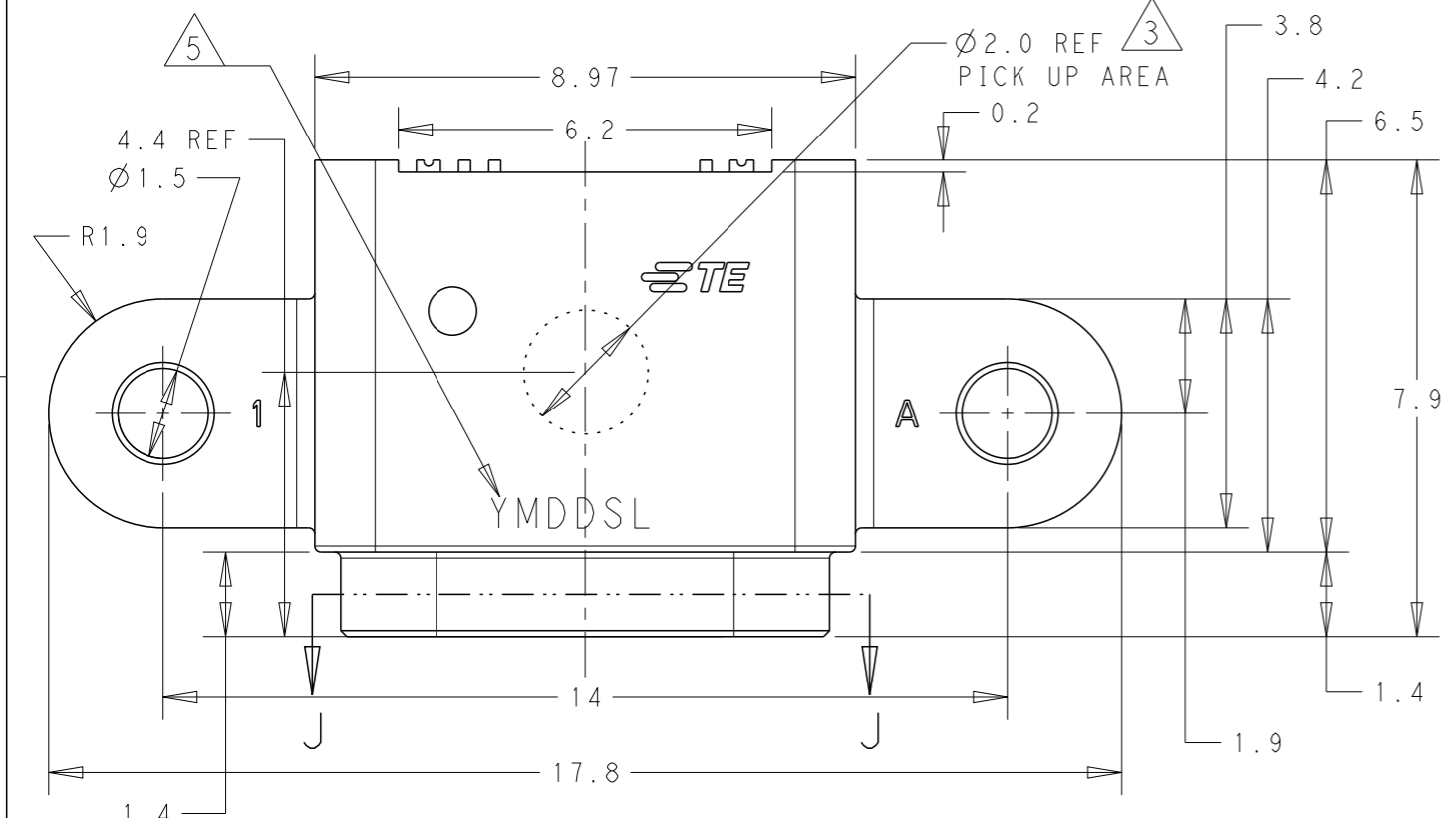
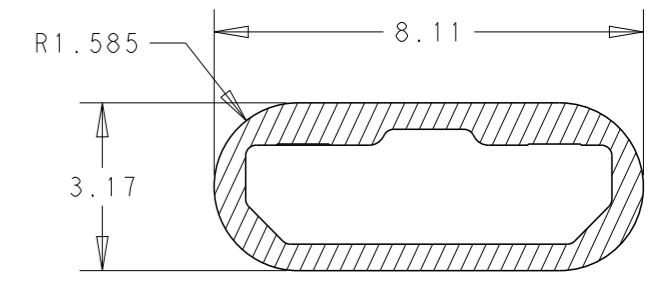
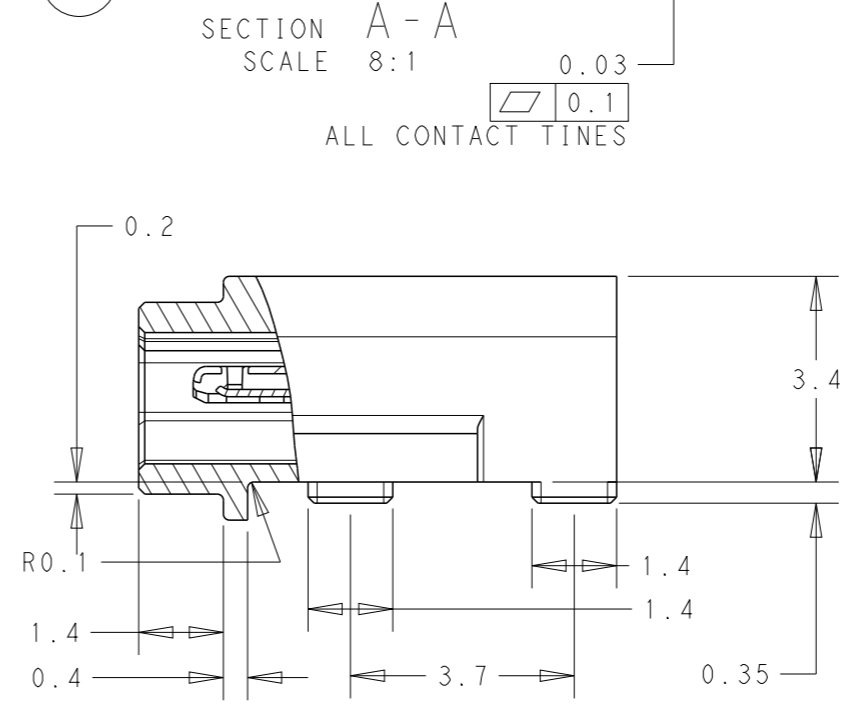
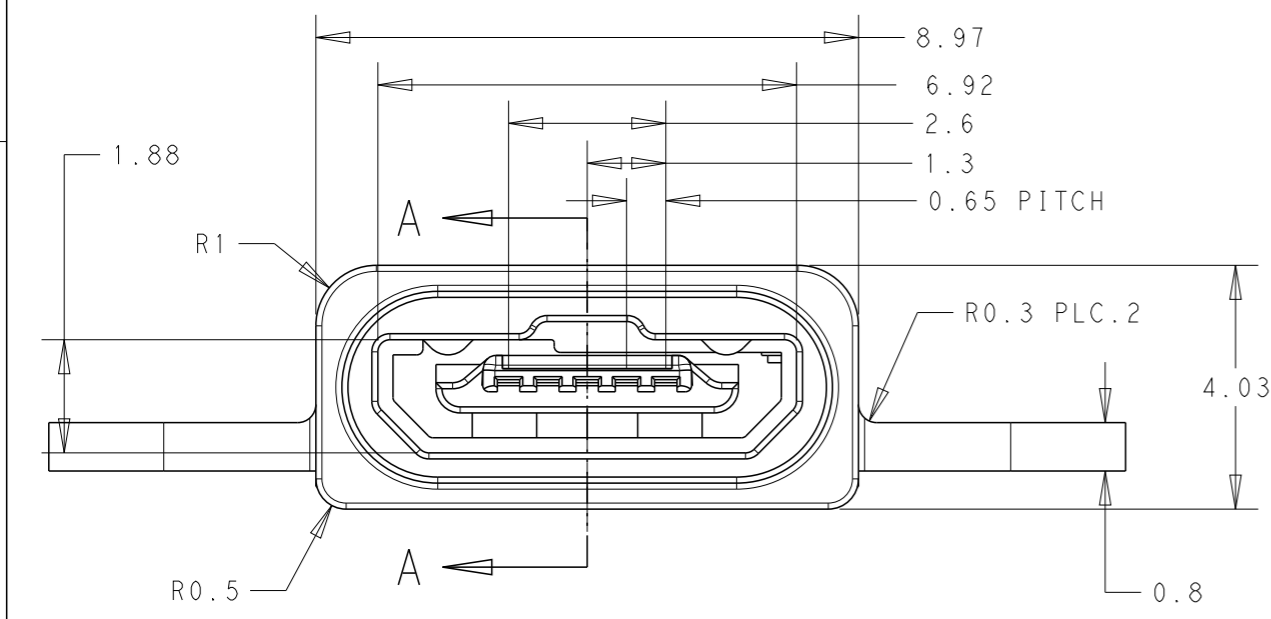


THIS DRAWING IS UNPUBLISHED. RELEASED FOR PUBLICATION 20  
 © COPYRIGHT 20 BY - ALL RIGHTS RESERVED.

| REVISIONS |     |             |           |      |      |
|-----------|-----|-------------|-----------|------|------|
| P         | LTR | DESCRIPTION | DATE      | DWN  | APVD |
| I         |     | RELEASED    | 15JUL2014 | YJ.C | JH.K |
| A         |     | REVISED     | 30SEP2014 | YJ.C | JH.K |
| B         |     | REVISED     | 25NOV2014 | YJ.C | JH.K |



- 1. MATERIAL : SEE TABLE
- 2. FINISH : SEE TABLE
- 3. PICKING AREA
- 4. COPLANARITY : 0.1mm MAX
- 5. DATE CODE : 6 DIGITS(YMDDSL)  
: Y-YEAR, M-MONTH,  
DD-DAY, S-SHIFT, L-LINE.
- 6. PACKING QUANTITY : 1,000 PCS/REEL



SECTION J-J SCALE 7:1  
 <REFER TO ASSEMBLY SEALING>

SHOWN AS : 2108877-1

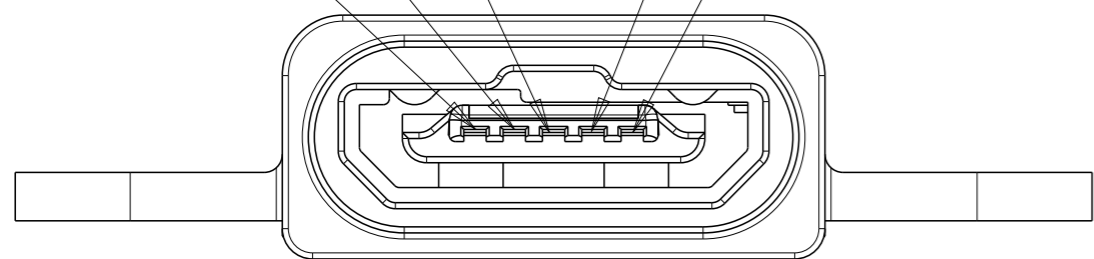
|    |               |                 |   |
|----|---------------|-----------------|---|
| 6  | POTTING       | SILICONE        | BLACK   |
| 5  | REINFORCEMENT | STAINLESS STEEL | DEGREASING  |
| 4  | HOLD PLATE    | STAINLESS STEEL | DEGRESS   |
| 3  | USB-CONTACT   | COPPER ALLOY    | Ni 1.0um~5.0um ALL OVER<br>Au 0.05um MIN. + Ni-Pd 0.75um MIN. AT CONTACT AREA<br>Au 0.05um MIN. AT SOLDERING AREA |
| 2  | INSERT-MOLD   | THERMO PLASTIC  | BLACK   |
| 1  | MIM SHELL     | STAINLESS STEEL | Ni 0.2um~5.0um ALL OVER   |
| NO | DESCRIPTION   | 1 MATERIAL      | 2 FINISH  |

| DIMENSIONS: |  | TOLERANCES UNLESS OTHERWISE SPECIFIED: |     |
|-------------|--|--|-----|
| mm          |  | ±0.2                                   |     |
|             |  | Ø PLC                                  | ±   |
|             |  | 1 PLC                                  | ±   |
|             |  | 2 PLC                                  | ±   |
|             |  | 3 PLC                                  | ±   |
|             |  | 4 PLC                                  | ±   |
|             |  | ANGLES                                 | ±5° |
| MATERIAL    |  | FINISH                                 |     |
| 1           |  | 2                                      |     |

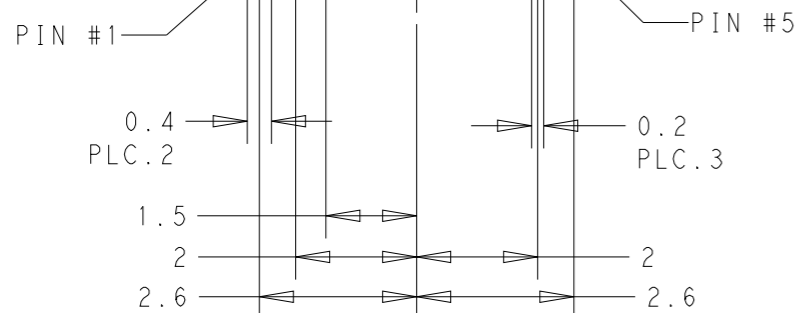
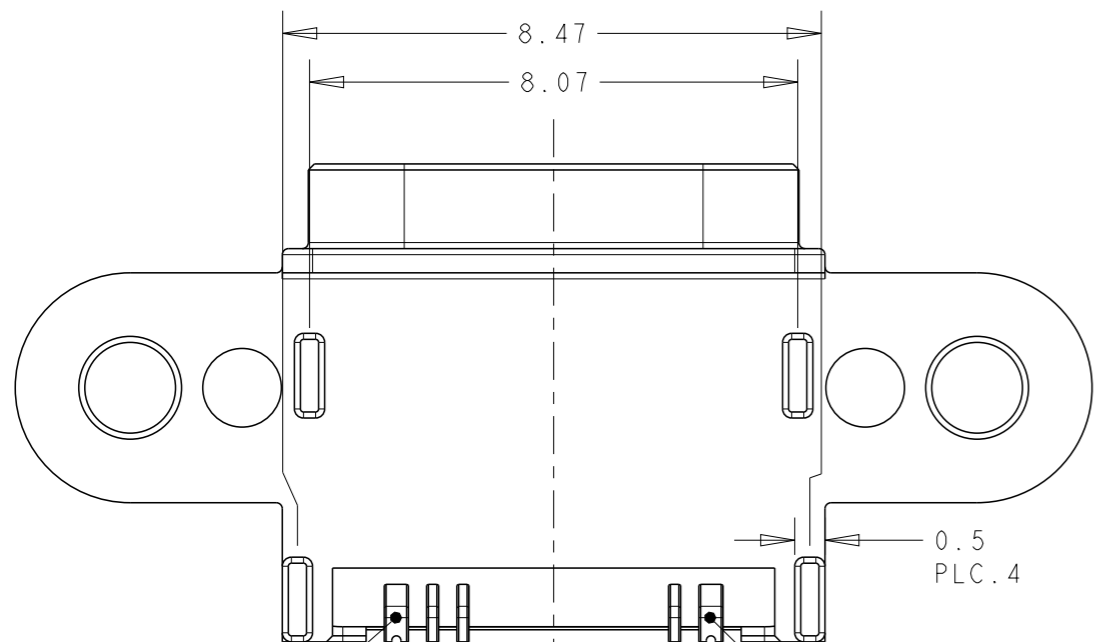
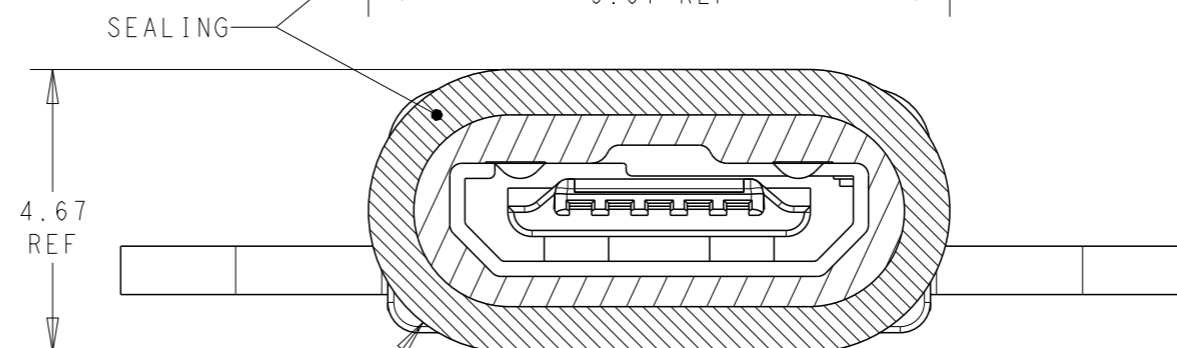
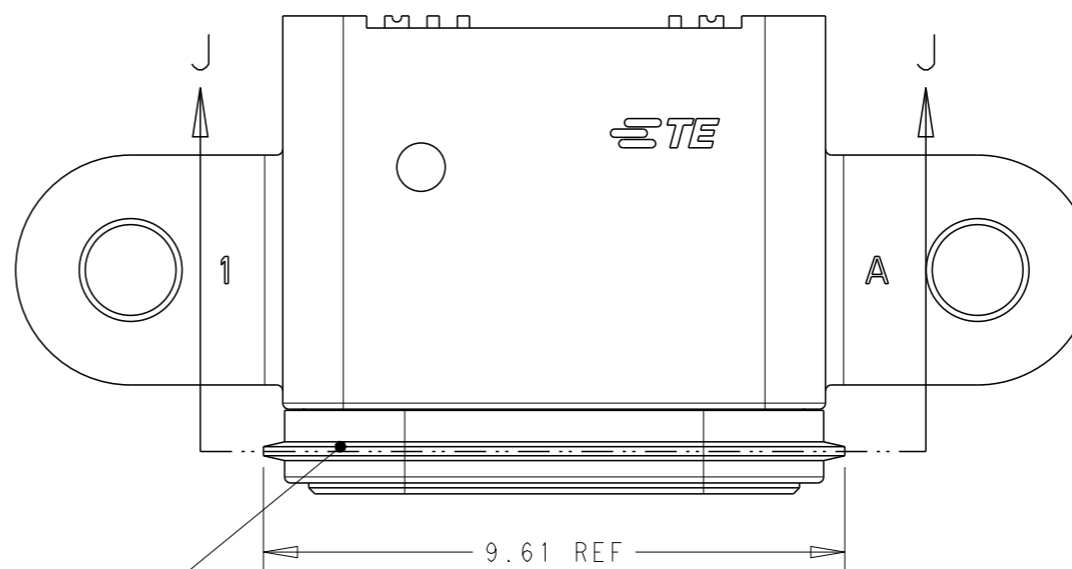
|  |  |      |      |           |                     |                  |        |                             |  |
|--|--|------|------|-----------|---------------------|------------------|--------|-----------------------------|--|
| THIS DRAWING IS A CONTROLLED DOCUMENT. |  | DWN  | YJ.C | 15JUL2014 | <br>TE Connectivity | NAME             |        | Micro USB RECEPTACLE        |  |
|  |  | CHK  | HJ.L | 15JUL2014 |                     | PRODUCT SPEC     |        | 5POSITION STANDARD ON BOARD |  |
|  |  | APVD | JH.K | 15JUL2014 |                     | APPLICATION SPEC |        | WATER PROOF                 |  |
|  |  |      |      |           |                     | 108-61223        |        |                             |  |
|  |  |      |      |           | 114-XXXXX           |                  |        |                             |  |
|  |  |      |      |           | WEIGHT              |                  | -      |                             |  |
|  |  |      |      |           | CUSTOMER DRAWING    |                  |        |                             |  |
|  |  |      |      |           | SCALE               |                  | 8:1    |                             |  |
|  |  |      |      |           | SHEET               |                  | 1 OF 4 |                             |  |
|  |  |      |      |           | REV                 |                  | B      |                             |  |

| P | LTR | DESCRIPTION | DATE | DWN | APVD |
|---|-----|-------------|------|-----|------|
|   |     |             |      |     |      |

PIN #3  
 PIN #2  
 PIN #1  
 PIN #4  
 PIN #5



AFTER ASSEMBLY SEALING



REFERENCE PIN ASSIGNMENT

| 5     | micro USB PIN 5 | GND                      |
|-------|-----------------|--------------------------|
| 4     | micro USB PIN 4 | ID                       |
| 3     | micro USB PIN 3 | D+                       |
| 2     | micro USB PIN 2 | D-                       |
| 1     | micro USB PIN 1 | VBUS                     |
| PIN # | CONTACT NO.     | SIGNAL NAME (ASSIGNMENT) |

THIS DRAWING IS A CONTROLLED DOCUMENT.

DWN YJ.C 15JUL2014

CHK HJ.L 15JUL2014

APVD JH.K 15JUL2014

PRODUCT SPEC 108-61223

APPLICATION SPEC 114-XXXXX

WEIGHT -

CUSTOMER DRAWING

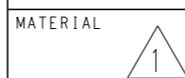


NAME Micro USB RECEPTACLE 5POSITION STANDARD ON BOARD WATER PROOF

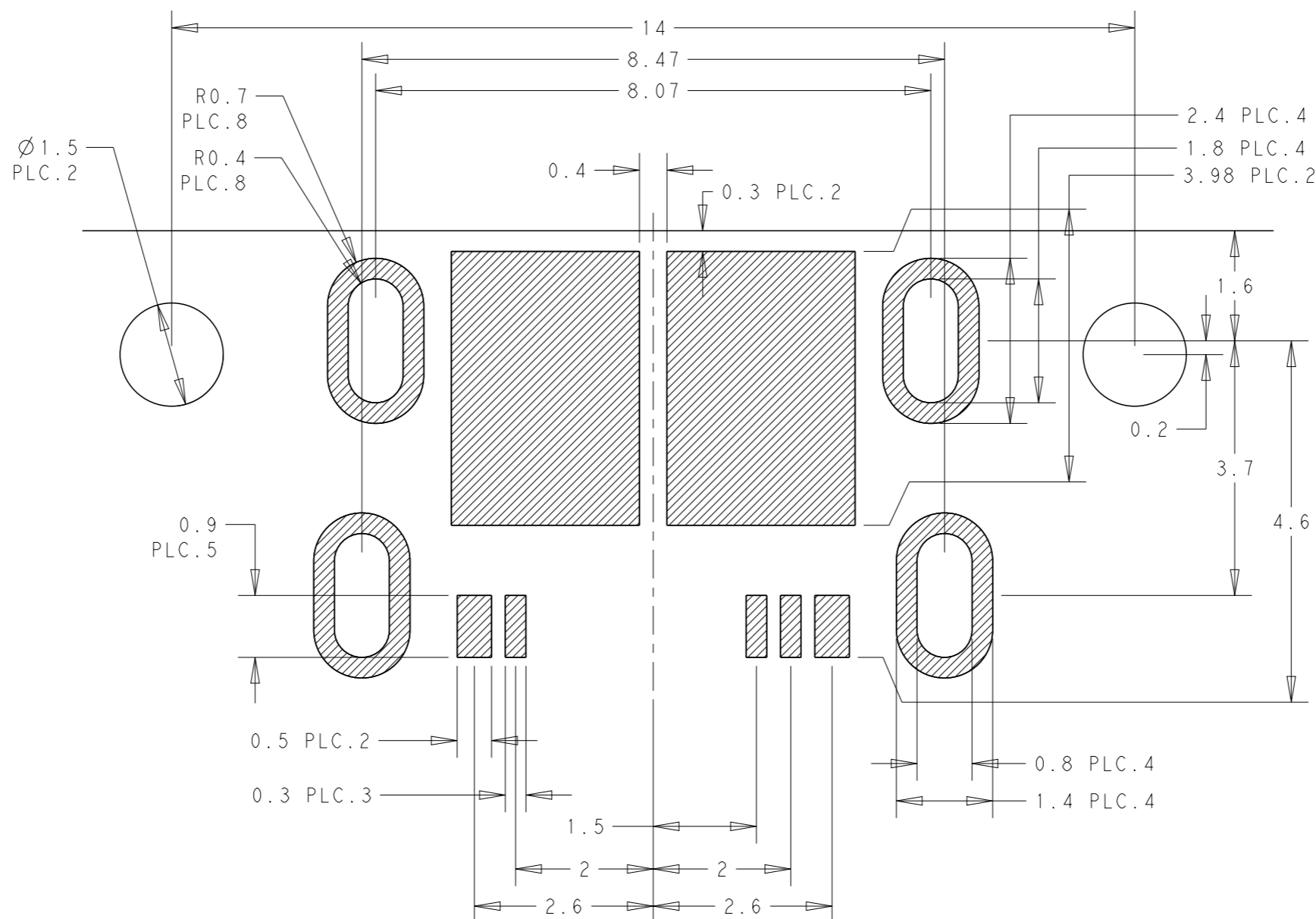
SIZE A3 CAGE CODE 00779 DRAWING NO C-2108877 RESTRICTED TO -

SCALE 8:1 SHEET 2 OF 4 REV B




| DIMENSIONS: | TOLERANCES UNLESS OTHERWISE SPECIFIED: |
|-------------|--|
| mm          | ±0.2                                   |
| Ø PLC       | ±                                      |
| 1 PLC       | ±                                      |
| 2 PLC       | ±                                      |
| 3 PLC       | ±                                      |
| 4 PLC       | ±                                      |
| ANGLES      | ±5°                                    |
| FINISH      | 2                                      |



| P | LTR | DESCRIPTION | DATE | DWN | APVD |
|---|-----|-------------|------|-----|------|
|   |     |             |      |     |      |



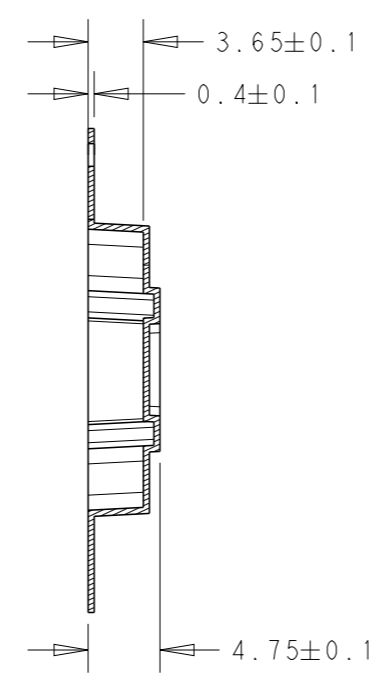
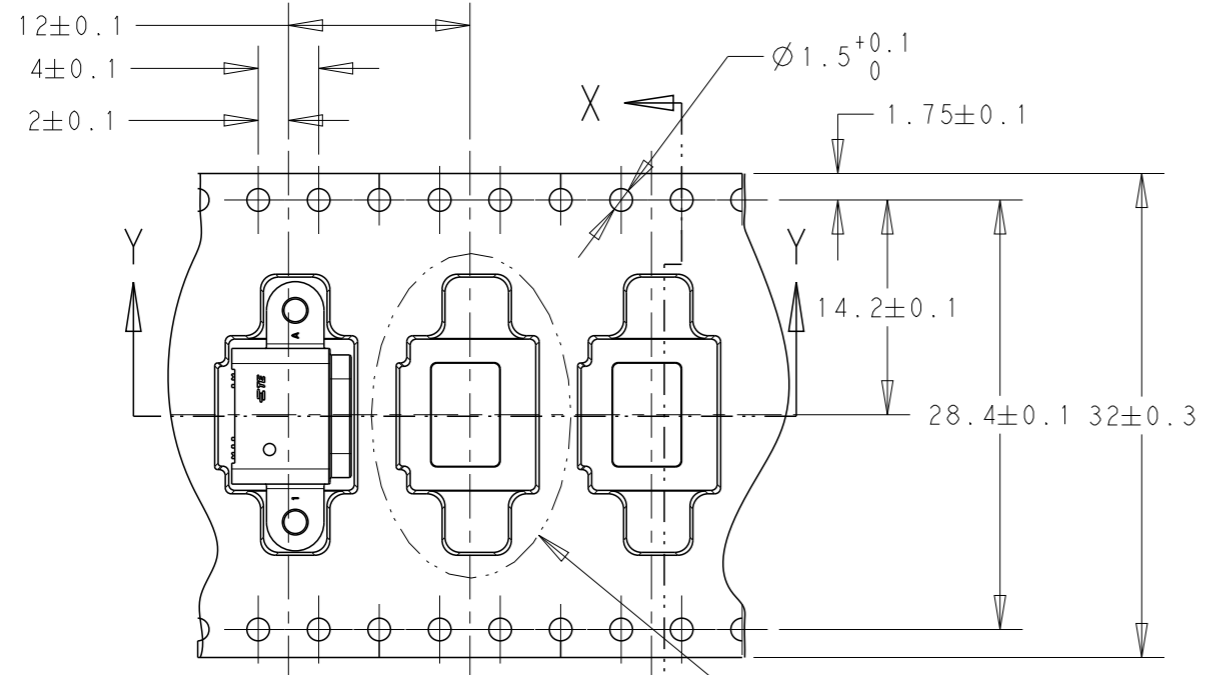
RECOMMENDED PCB LAYOUT  
TOP VIEW  
(GENERAL TOLERANCE : ±0.05)

|   |  |                           |  |   |                    |
|---|--|---------------------------|--|---|--------------------|
| THIS DRAWING IS A CONTROLLED DOCUMENT.  |  | DWN<br>YJ.C               | 15JUL2014  |  TE Connectivity |                    |
| DIMENSIONS:<br>mm   |  | CHK<br>HJ.L               | 15JUL2014  |   |                    |
|  |  | APVD<br>JH.K              | 15JUL2014  |   |                    |
|  |  | PRODUCT SPEC<br>108-61223 | NAME<br>Micro USB RECEPTACLE<br>5POSITION STANDARD ON BOARD<br>WATER PROOF |   |                    |
| MATERIAL<br>1   |  | FINISH<br>2               |  | APPLICATION SPEC<br>114-XXXXX   | RESTRICTED TO<br>- |
|   |  | WEIGHT<br>-               |  | SIZE<br>A3  | CAGE CODE<br>00779 |
|   |  | CUSTOMER DRAWING          |  | DRAWING NO<br>C-2108877   |                    |
|   |  |                           |  | SCALE<br>8:1  | SHEET 3 OF 4       |
|   |  |                           |  |   | REV B              |

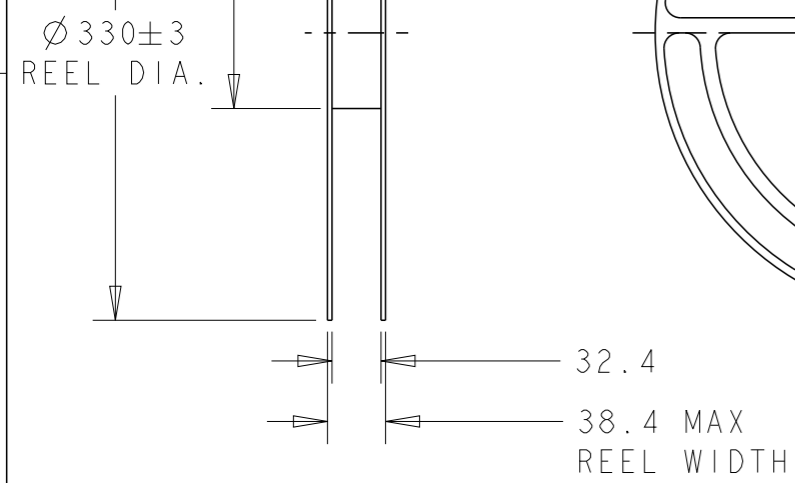
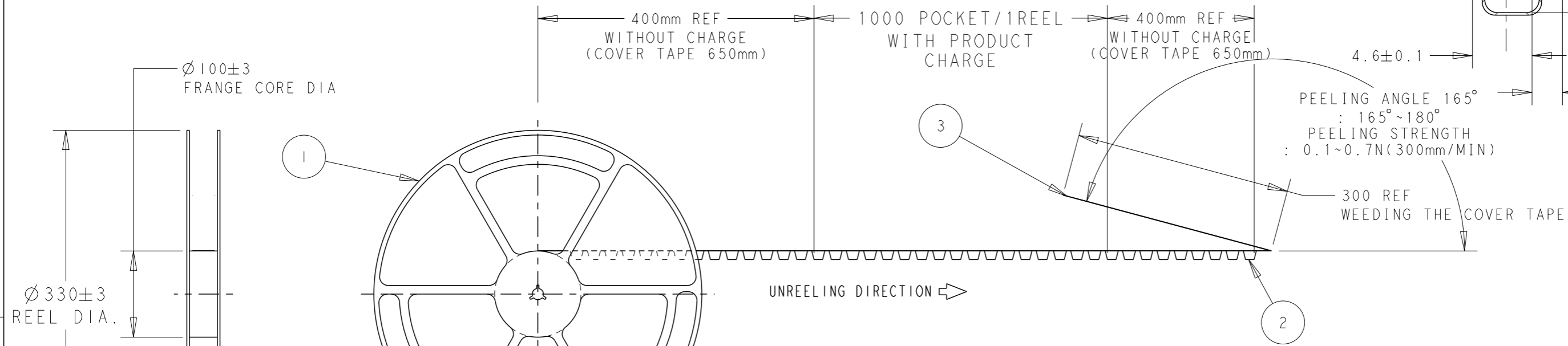
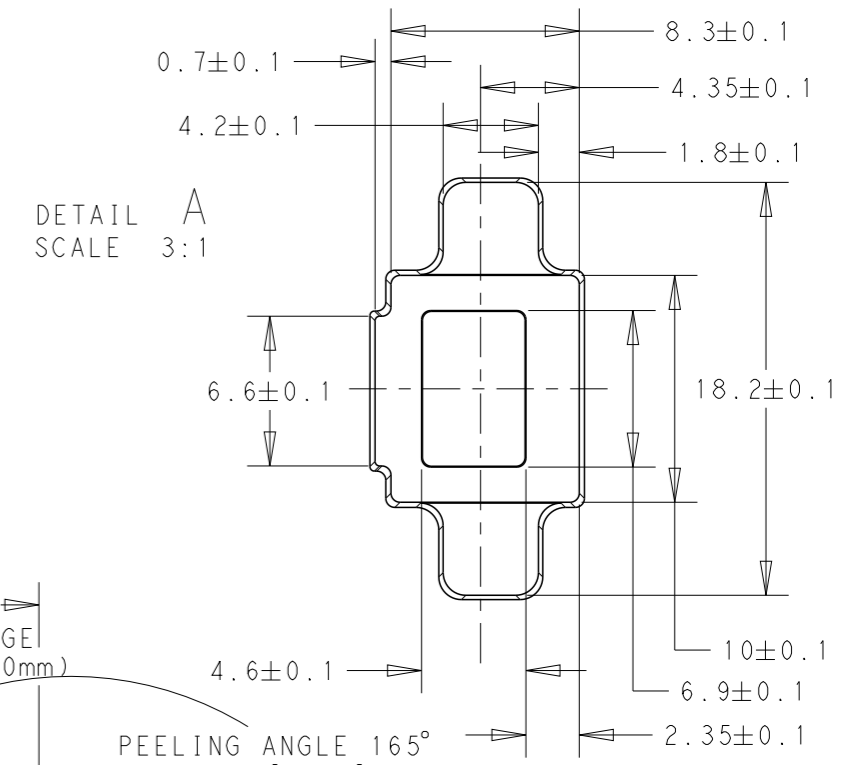
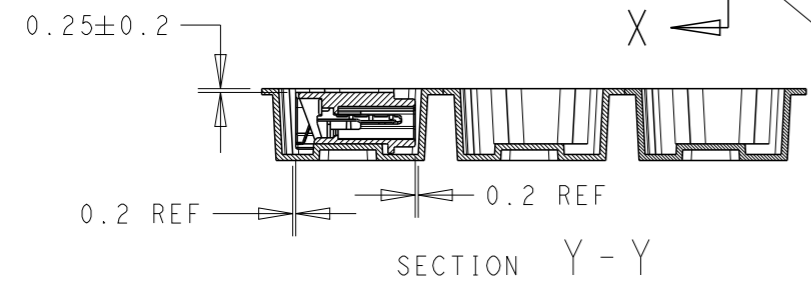
THIS DRAWING IS UNPUBLISHED. RELEASED FOR PUBLICATION 20  
 © COPYRIGHT 20 BY - ALL RIGHTS RESERVED.


| REVISIONS |     |             |      |      |
|-----------|-----|-------------|------|------|
| P         | LTR | DESCRIPTION | DATE | APVD |
|           |     | SEE SHEET 1 |      |      |

PRODUCT USER DIRECTION OF UNREELING →



- MATERIAL ANTI STATIC MATERIAL SHOULD BE USED. PS(NATURAL) REEL SHOULD BE APPLIED.
- MATERIAL/COMPONENTS WHICH CONTAIN PROHIBITION SUBSTANCES WHICH ARE DESCRIBED IN THE TABLE 1 OF 4.2, ENVIRONMENT RELATED SUBSTANCE CONTROL STANDARD ON 14-2.5.0.6, MUST NOT BE USED IN PRODUCT NOR MANUFACTURING PROCESS.
- CADMIUM CONTENT: 5ppm UNDER. (ONLY PLASTIC/RUBBER) : QIP INSPECTION ITEM. (ONLY PLASTIC/RUBBER)
- NO SCRATCH AND STAIN ON SHELL
- COVER TAPE IS THERMO-COMPRESSION SEALING(BONDING)
- ESD OF REEL COVER TAPE IS 100V MAX
- SURFACE RESISTANCE OF REEL COVER TAPE IS 1X10<sup>5</sup> ~ 1X10<sup>12</sup> ohm



|   |  |                            |   |                 |
|---|--|----------------------------|---|-----------------|
| THIS DRAWING IS A CONTROLLED DOCUMENT.                                      |  | DWN Y.J.C 15JUL2014        |  TE Connectivity |                 |
| DIMENSIONS: mm  |  | CHK H.J.L 15JUL2014        |   |                 |
| TOLERANCES UNLESS OTHERWISE SPECIFIED: ±0.2                                 |  | APVD J.H.K 15JUL2014       | NAME  |                 |
| Ø PLC ±<br>1 PLC ±<br>2 PLC ±<br>3 PLC ±<br>4 PLC ±<br>ANGLES ±5°<br>FINISH |  | PRODUCT SPEC 108-61223     | Micro USB RECEPTACLE  |                 |
| MATERIAL 1  |  | APPLICATION SPEC 114-XXXXX | 5POSITION STANDARD ON BOARD   |                 |
|   |  | WEIGHT -                   | WATER PROOF   |                 |
|   |  | CUSTOMER DRAWING           | SIZE A3   | RESTRICTED TO - |
|   |  |                            | CAGE CODE 00779   |                 |
|   |  |                            | DRAWING NO C-2108877  |                 |
|   |  |                            | SCALE 8:1   |                 |
|   |  |                            | SHEET 4 OF 4  |                 |
|   |  |                            | REV B   |                 |

# Mouser Electronics

Authorized Distributor

Click to View Pricing, Inventory, Delivery & Lifecycle Information:

[TE Connectivity:](#)

[2108877-1](#)