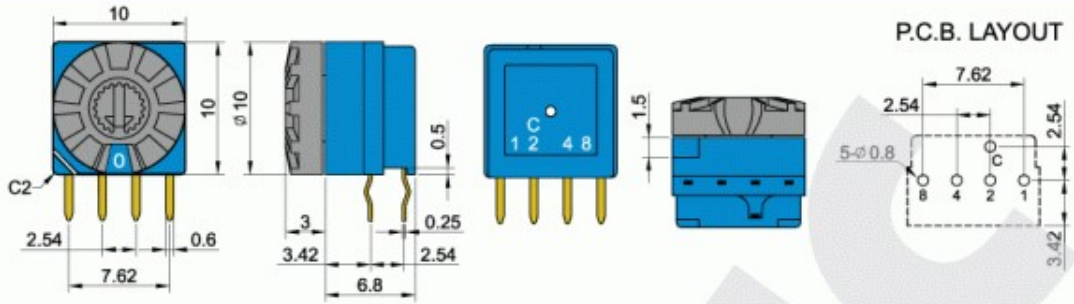


## RI41312

- RI : Horizontal
- 4 : 4+1 Pins
- 13 : Rotor 3mm W/Knob  $\phi 10$
- 12 : 10 positions

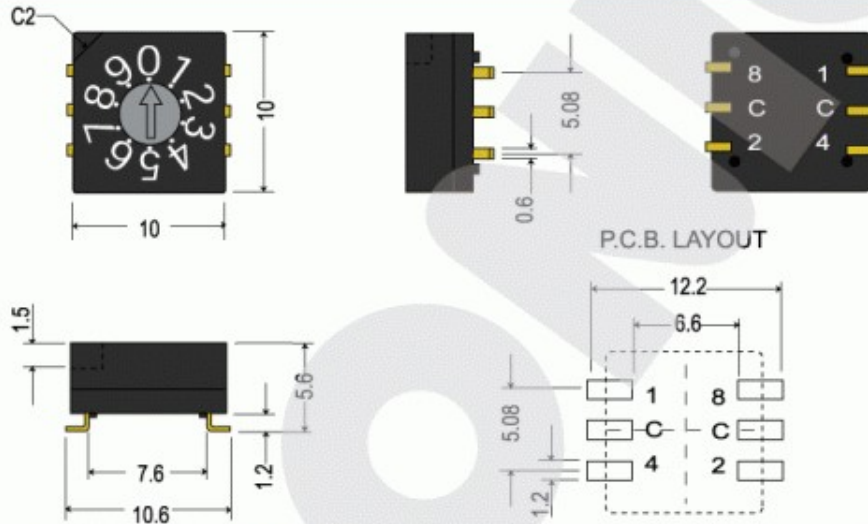


## RM30012

SMD



- RM : SMD, Vertical
- 3 : 3+3 Pins
- 00 : Flat type
- 12 : 10 positions



## CODES

CODE NO: 03  
BCD  
4 POSITIONS

Position	Common Contacted			
	1	2	4	8 C
0			●	●
1	●			●
2			●	●
3	●			●

CODE NO:11  
BCD  
8 POSITIONS

Position	Common Contacted				
	1	2	4	8	C
0					●
1	●				●
2		●			●
3	●	●			●
4			●		●
5	●	●	●		●
6	●	●			●
7	●	●	●		●

CODE NO:12  
BCD  
10 POSITIONS

Position	Common Contacted				
	1	2	4	8	C
0					●
1	●				●
2		●			●
3	●	●			●
4			●		●
5	●	●	●		●
6	●	●			●
7	●	●	●		●
8				●	●
9	●			●	●

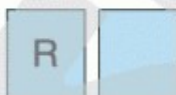
CODE NO:14  
BCD  
16 POSITIONS

Position	Common Contacted				
	1	2	4	8	C
0					●
1	●				●
2		●			●
3	●	●			●
4			●		●
5	●	●	●		●
6	●	●			●
7	●	●	●		●
8				●	●
9	●			●	●
A	●	●			●
B	●	●	●		●
C	●	●			●
D	●	●	●		●
E	●	●			●
F	●	●	●		●

CODE NO:33  
BCD  
COMPLEMENT  
16 POSITIONS

Position	Common Contacted				
	1	2	4	8	C
0	●	●	●	●	●
1					●
2	●	●	●	●	●
3					●
4	●	●	●	●	●
5					●
6	●	●	●	●	●
7					●
8	●	●	●	●	●
9					●
A	●	●	●	●	●
B					●
C	●	●	●	●	●
D					●
E	●	●	●	●	●
F					●

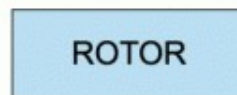
## HOW TO ORDER



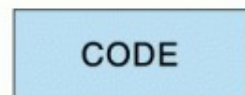
+



+



+



- ※ S : Vertical Dip type
- ※ R : Horizontal Dip type (Right-Angle)(P : 5.08mm)
- ※ M : SMD type
- I : Horizontal Dip type (Right-Angle)(P : 2.54mm)

- 2 : 2+3 pins
- 3 : 3+3 pins
- 4 : 4+1 pins (For RI Series Only)

- 00 : Flat Type
- 13 : L=3mm, W/ Knob  $\phi 10$
- 23 : L=3mm, shaft hole
- 17 : L=7mm, W/ Knob  $\phi 9.5$
- 27 : L=7mm, shaft hole

- 03 : 4 Positions(Real)
- 11 : 8 Positions(Real)
- 12 : 10 Positions(Real)
- 14 : 16 Positions(Real)
- Complement
- 33 : 16 Positions