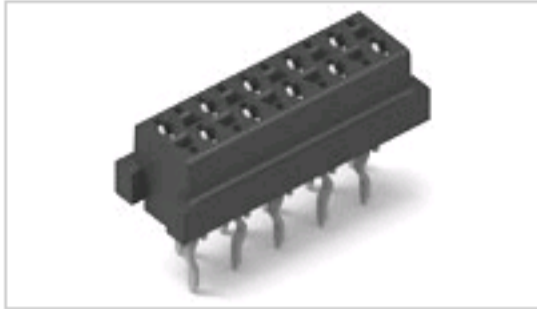




# 1-2178710-6 Product Details

[Share](#) | [Print](#) | [Email](#)


## Micro-MaTch Board-Board & Ribbon-Board Connectors

16P, FOB, THT, MICRO-MATCH VALUE LINE

**1-2178710-6**

TE Internal Number: 1-2178710-6

Active

[View 3D PDF](#)

**Product Highlights** [View All](#)

- Connector
- Type of Connector = Female-On-Board
- 16 Positions
- Applies To Printed Circuit Board
- Vertical Mount Angle

[Pricing & Availability](#)

[Request Sample](#)

[Add to My Part List](#)

[Buy Product through Distributor](#)

Feedback

[Documents](#) | [Features](#) | [Compliance](#)

**Please Note:**

Use the Product Drawing for all design activity

**Product Type Features**

Product Type	Connector
Type of Connector	Female-On-Board
Mount Angle	Vertical
PCB Mount Style	Through Hole

**Body Features**

Locking Latch	Without
---------------	---------

**Contact Features**

Vacuum Tape	Without
Contact Base Material	Copper Alloy
Contact Plating, Mating Area, Material	Tin over Nickel

**Housing Features**

Housing Entry Style	Top
Housing Color	Black
Housing Material	Polyester - GF
Centerline (mm [in])	1.27 [0.050]

**Configuration Features**

Number of Positions	16
---------------------	----

**Industry Standards**

RoHS/ELV Compliance	RoHS compliant, ELV compliant
Lead Free Solder Processes	Wave solder capable to 240°C, Wave solder capable to 260°C, Wave solder capable to 265°C
RoHS/ELV Compliance History	Always was RoHS compliant

**Conditions for Usage**

Applies To	Printed Circuit Board
------------	-----------------------

**Packaging Features**

Packaging Method	Reel
Packaging Quantity	2,500

**Other**

Brand	AMP
-------	-----

**Related Products**

Not quite the product you're looking for?

[Find Similar Products](#)

[View Part in Product Feature Selector](#)

[Check for Tooling](#)

**Corporate Information**

- [About TE](#)
- [Investors](#)
- [News Room](#)
- [Supplier Portal](#)
- [Careers](#)
- [Terms & Conditions](#)
- [Privacy Policy](#)
- [Global Accessibility Statement](#)

**Quick Links**

- [Distributor Inventory](#)
- [Product Cross Reference](#)
- [Documents & Drawings](#)
- [Product Compliance Support Center](#)
- [Site Map](#)

**Customer Support**

- [Email or Chat With Us](#)
- [Find a Phone Number](#)
- [Knowledge Base](#)
- [Manage Your Account](#)

**Keep Me Informed**

