

61083-AA B C D E G W V F F

AA	NO. OF POSITIONS
02	2X10
04	2X20
06	2X30
08	2X40
10	2X50
12	2X60
14	2X70
16	2X80
18	2X90
20	2X100

NOTE 10

G	DATE CODE
/	STANDARD, NOT PRINT D/C
P	PRINT DATE CODE

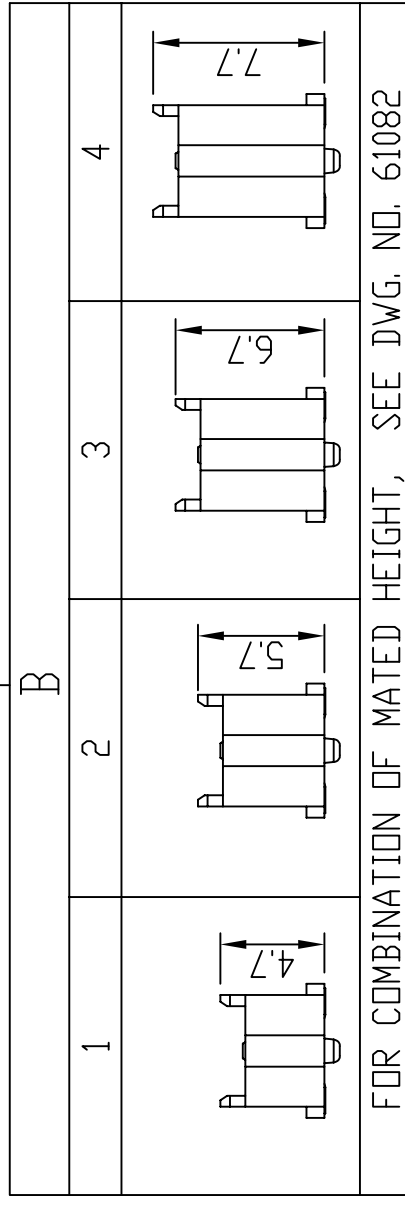
W	TRANSPORT CODE
/	NOT MANDATORY
W	FOR OCEAN SHIPPING

V	MANDATORY CODE
/	STANDARD, NOT MANDATORY P/N
V	ONLY FOR DEDICATED CUSTOMER
H	ONLY FOR DEDICATED CUSTOMER
L	ONLY FOR DEDICATED CUSTOMER

E	PACKAGING
0	TUBE WITHOUT METAL CAP
2	T&R WITH METAL CAP
9	TUBE WITH METAL CAP
6	T&R WITH KAPTON TAPE
7	T&R WITH PLASTIC CAP
Q	T&R WITHOUTL CAP

NOTE 10
NOTE 10
NOTE 11
NOTE 10

D	PEG
0	YES
2	NO



FOR COMBINATION OF MATED HEIGHT, SEE DWG. NO. 61082

NOTE:

- MATERIAL: HOUSING: G.F. LCP, NATURAL, UL94-V0
TERMINAL: BRASS
- PLATING: AS SHOWN IN TABLE NICKEL UNDERPLATE OVERALL 1.27um MIN.
- SEE GS-12-547 FOR PRODUCT SPEC.
- PACKAGING OPTION 2: NOT ALL SIZES ARE AVAILABLE, CHECK WITH FACTORY.
- THIS PRODUCT MEETS THE EUROPEAN UNION DIRECTIVES AND OTHER COUNTRY REGULATIONS AS DESCRIBED IN GS-22-008.
- THE HOUSING WILL WITHSTAND EXPOSURE UP TO 260~ PEAK TEMPERATURE FOR 30 SECONDS IN A CONVECTION, INFRA-RED OR VAPOR PHASE REFLOW OVEN.
- PLATING OPTION "4" IS LEADFREE ALTERNATIVE FOR OPTION "D", AND OPTION "6" IS LEADFREE ALTERNATIVE FOR OPTION "1".
- HIGH PRECISION COPLANARITY IS AVAILABLE FOR 2X80 TO 2X100 POS, ALL HEIGHTS. PLS REFER TO PRINT 10069525.
- THE P/N 61083-***** OR 61083-*****LF NOT PRINT DATE CODE.
THE P/N 61083-*****P OR 61083-*****PLF NEED PRINT DATE CODE.
- POSITION 2X10 TYPE ONLY APPLY TO PLUG 1 AND PLUG 3.
PACKAGING WITH METAL CAP AND PLASTIC CAP DOES NOT APPLY TO 2X10 POSITION.
KAPTON TAPE ONLY APPLY TO POSITION 2X10~2X20.

C	PLATING ON CONTACT AREA / ON SOLDER TAIL AREA	FF
0	GOLD 0.2um MIN ON CONTACT AREA / TIN LEAD 2.5um MIN ON SOLDER TAIL	NONE
1	GOLD FLASH (0.065um MIN) OVER PALLADIUM-NICKEL 0.69um MIN ON CONTACT AREA / TIN LEAD 2.5um MIN ON SOLDER TAIL	NONE
4	GOLD 0.2um MIN ON CONTACT AREA / MATT TIN 2.5um MIN ON SOLDER TAIL	LF
5	GOLD 0.38um MIN ON CONTACT AREA / MATT TIN 2.5um MIN ON SOLDER TAIL	LF
6	GOLD FLASH 0.065um MIN OVER PALLADIUM-NICKEL 0.69um MIN ON CONTACT AREA / MATT TIN 2.5um MIN ON SOLDER TAIL	LF
7	GOLD 0.76um MIN ON CONTACT AREA / MATT TIN 2.5um MIN ON SOLDER TAIL	LF
9	GOLD 0.2um MIN ON CONTACT AREA / GOLD 0.05um MIN ON SOLDER TAIL	LF
B	GOLD 1.27um MIN ON CONTACT AREA / GOLD 0.05~0.25um ON SOLDER TAIL	LF
C	GOLD 1.27um MIN ON CONTACT AREA / MATT TIN 2.5um MIN ON SOLDER TAIL	LF
D	GOLD 0.38um MIN ON CONTACT AREA / GOLD FLASH ON SOLDER TAIL	LF

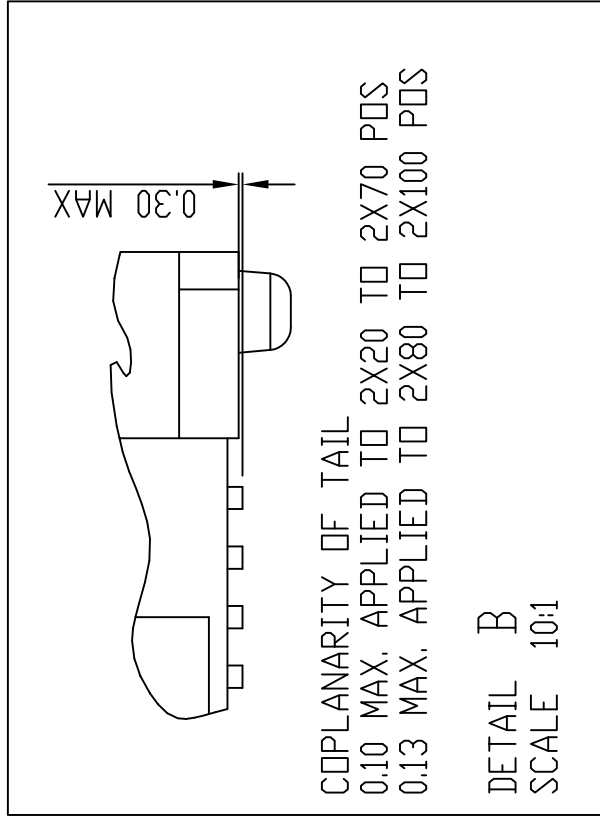
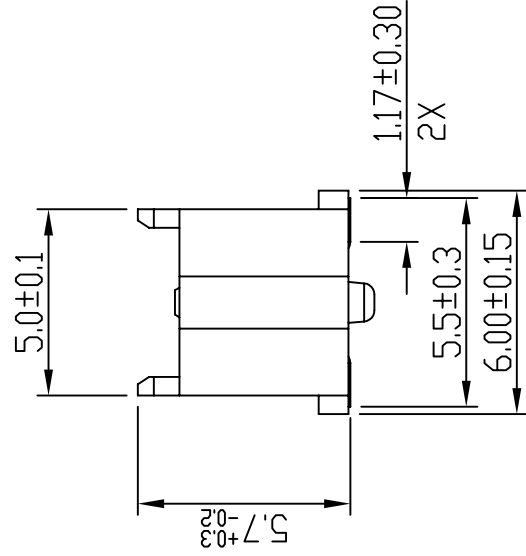
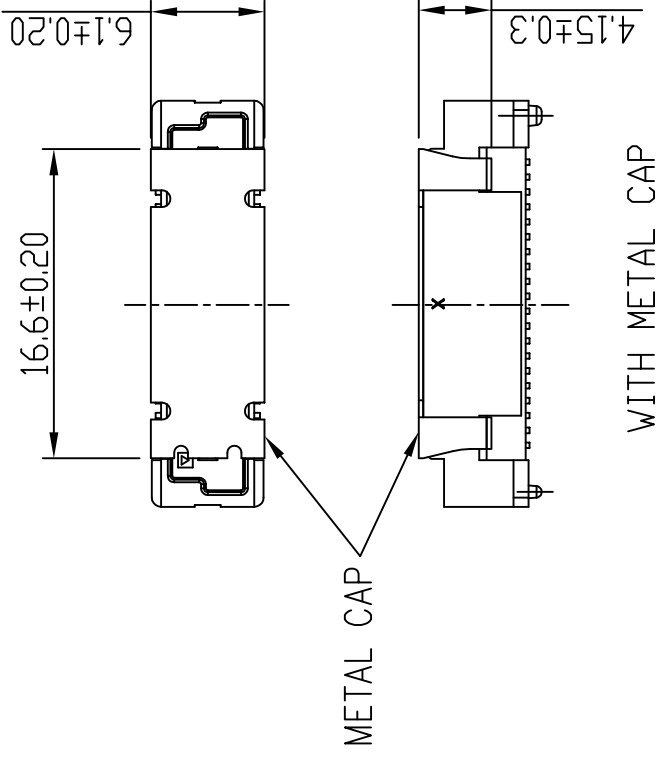
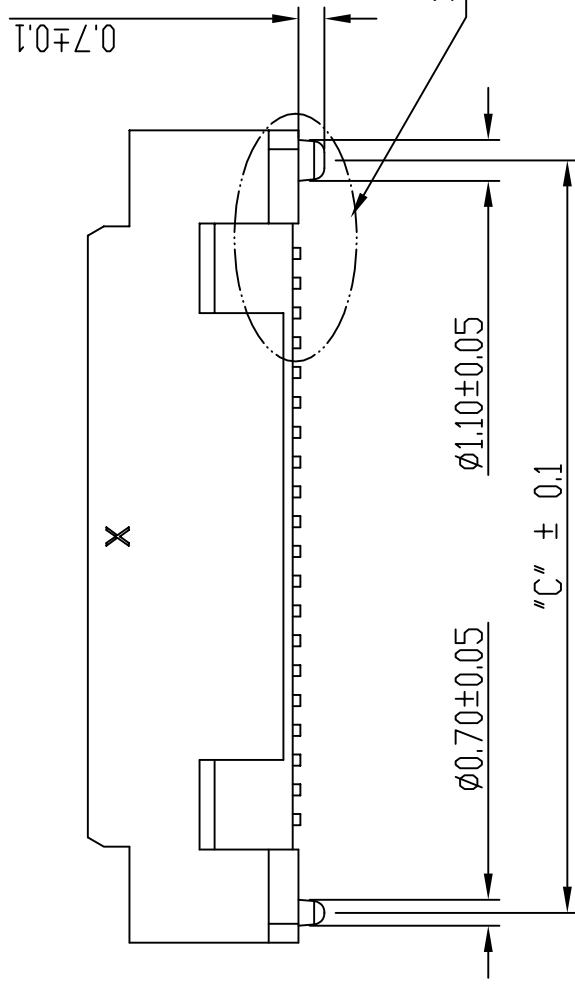
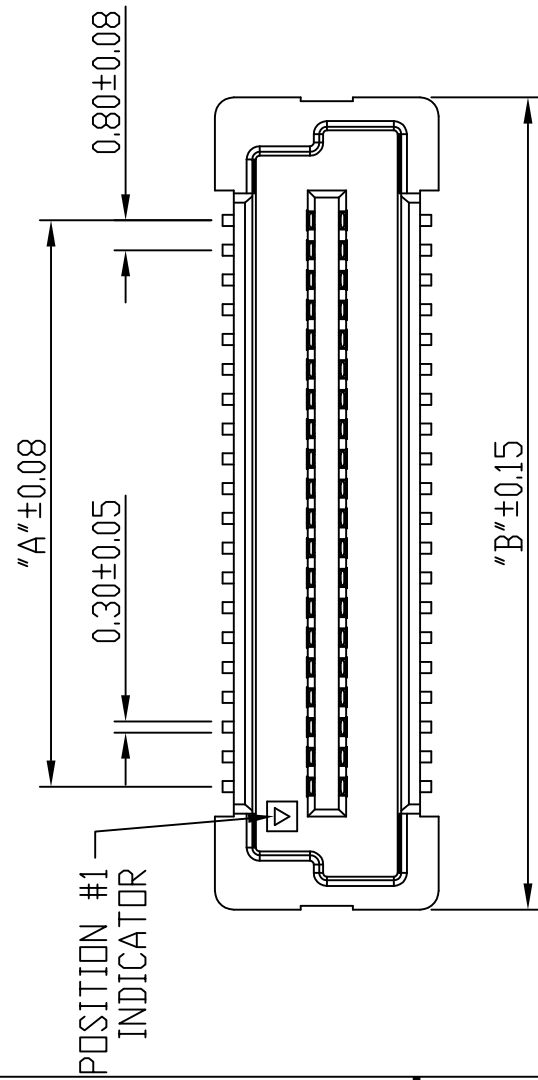
mat'l. code		surface	tolerance	projection	product family
ISO 1302	ISO 406	ISO 1104	ISO 1104	BERGSTAK HPL545	
ecn no	dr	date	tolerances unless otherwise specified	angles	linear
AP ELX-N-33922	Bob	2019-07-05	.0±.2	mm	mm
AR ELX-N-34967	Bob	2019-09-26	.00±.15	scale 1:1	
AS ELX-N-35593	Bob	2020-01-10	.000±.10		
AT ELX-N-37512	Bob	2020-06-28			
	dr	GuoMin Sun	2014-10-21		
	eng	Bob Gu	2020-06-28		
AM ELX-N-30296	Bob	2018-05-28			
AN ELX-N-30741	Bob	2018-11-22			
sheet revision	AL	AM	AN	AR	AS
index	sheet	1~6	1~6	1	1

PLUG ASSY
BERGSTAK 0.8MM

dwg no 61083
sheet 1 of 6 size A3
type Product Customer Drawing

1 | 2 | 3 | 4 | 5 | 6

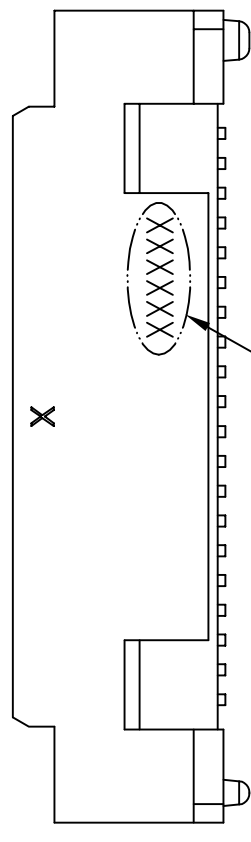
PRODUCT NO.	NO. OF POSITION	DIMENSION		
		A	B	C
61083-042***	2X20	15.2	21.8	20.2
61083-062***	2X30	23.2	29.8	28.2
61083-082***	2X40	31.2	37.8	36.2
61083-102***	2X50	39.2	45.8	44.2
61083-122***	2X60	47.2	53.8	52.2
61083-142***	2X70	55.2	61.8	60.2
61083-162***	2X80	63.2	69.8	68.2
61083-182***	2X90	71.2	77.8	76.2
61083-202***	2X100	79.2	85.8	84.2



DATE CODE: XXXXXX

DAY(01~31)
MONTH(01~12)
YEAR(00~99)

DETAIL BB



mat'l. code		surface	tolerance	projection	product family
itr	ecn no dr	ISO 1302	ISO 406	ISO 1101	BERGSTAK HPL545
AT		tolerances unless otherwise specified			
	date	angles	linear	mm	
		0°±3'	.0±.2	scale 1:1	
	dr	GuoMin Sun	.000±.10		
	eng	Bob Gu	2014-10-21		
	chr	LQ Lei	2020-06-28		
	appd	Tim Yao	2020-06-28		
sheet index	revision				
1	AT				
1	1				

Amphenol FCI

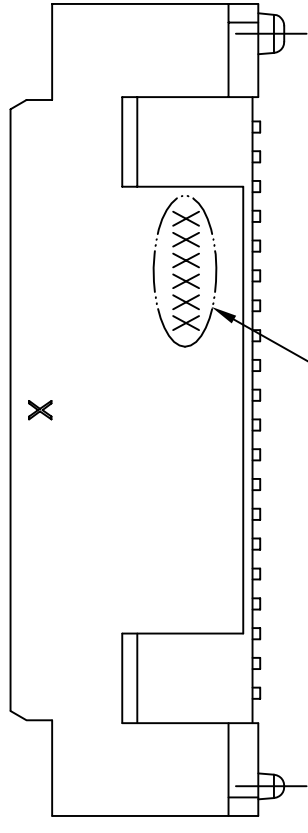
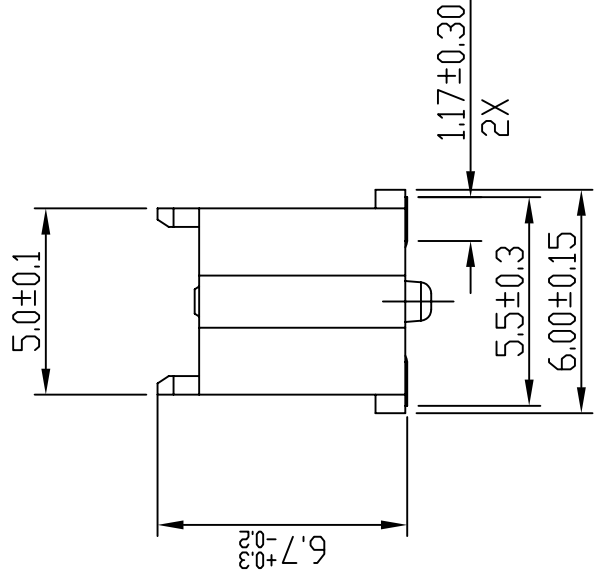
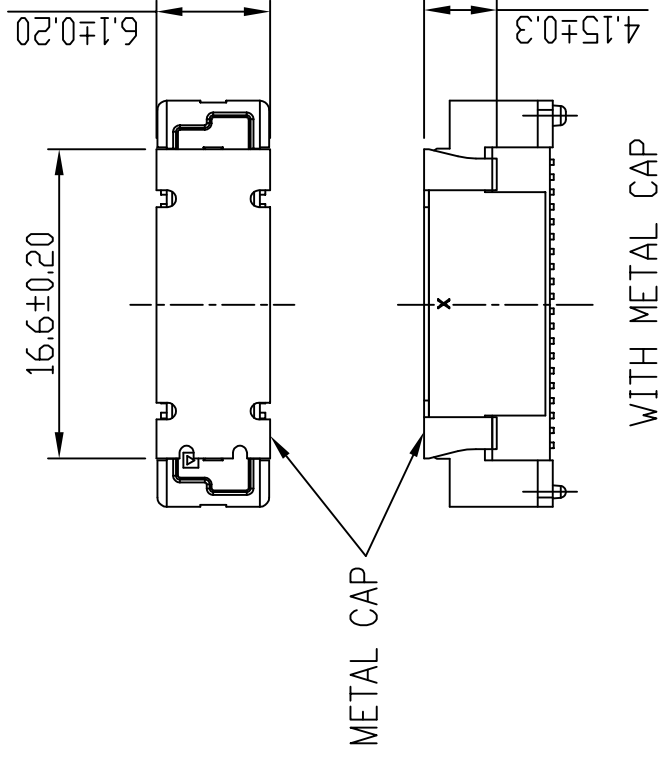
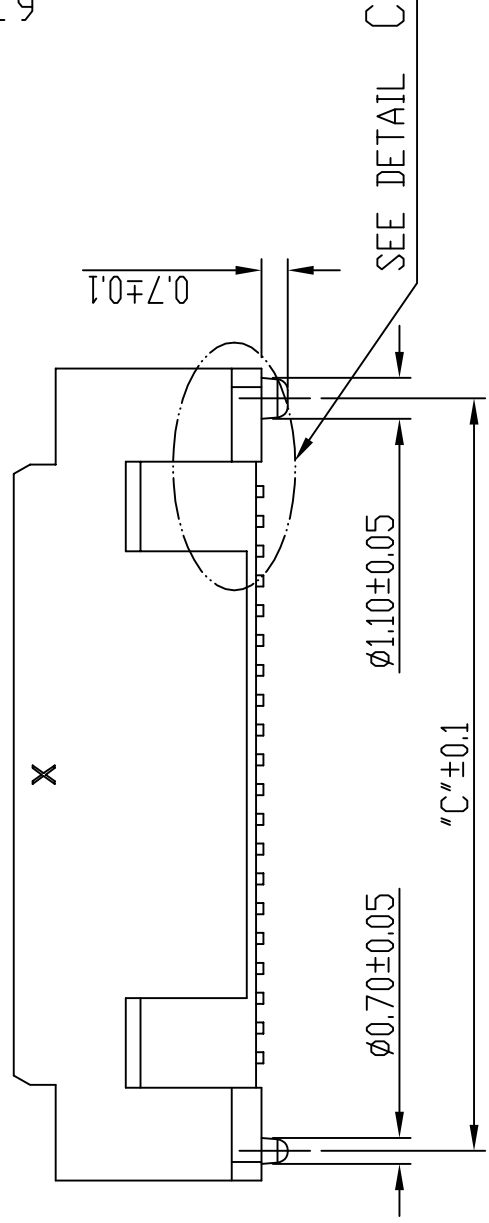
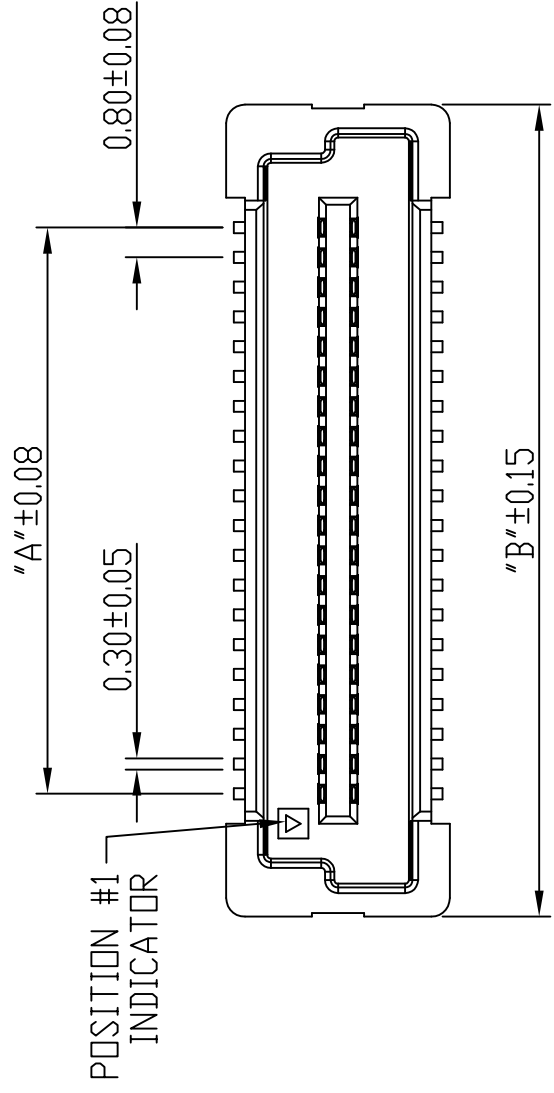
PLUG ASSY
BERGSTAK 0.8MM

dwg no 61083 sheet 3 of 6 size A3

type Product Customer Drawing

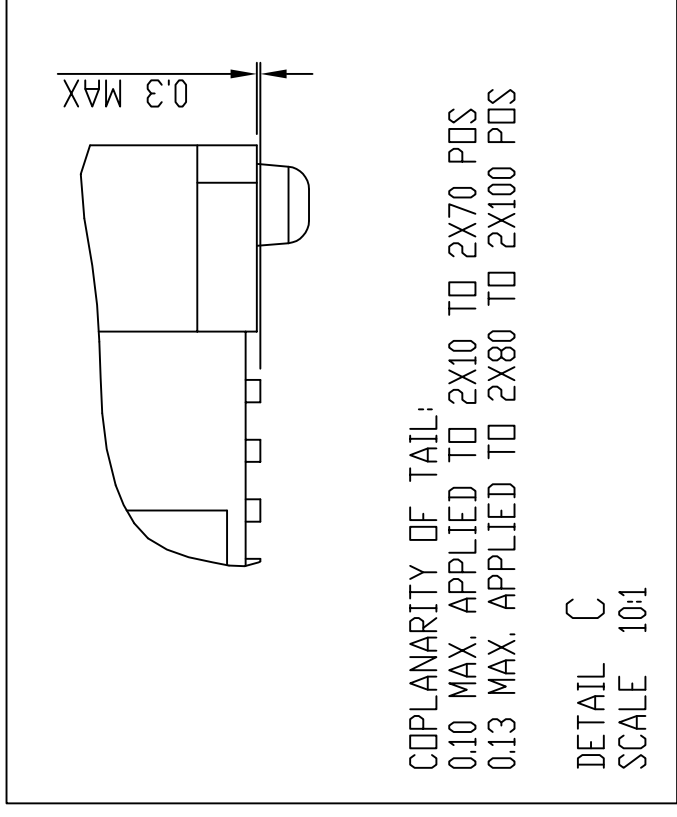
1 | 2 | 3 | 4 | 5 | 6

PRODUCT NO.	NO. OF POSITION	DIMENSION		
		A	B	C
61083-023***	2X10	7.2	13.8	12.2
61083-043***	2X20	15.2	21.8	20.2
61083-063***	2X30	23.2	29.8	28.2
61083-083***	2X40	31.2	37.8	36.2
61083-103***	2X50	39.2	45.8	44.2
61083-123***	2X60	47.2	53.8	52.2
61083-143***	2X70	55.2	61.8	60.2
61083-163***	2X80	63.2	69.8	68.2
61083-183***	2X90	71.2	77.8	76.2
61083-203***	2X100	79.2	85.8	84.2



SEE DETAIL CC

PLUG 3



DATE CODE: XXXXXX

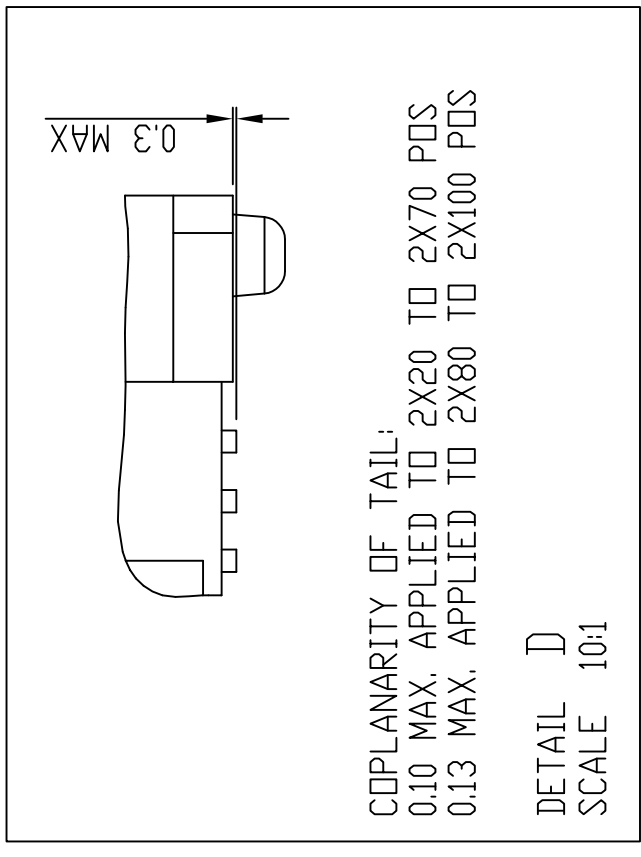
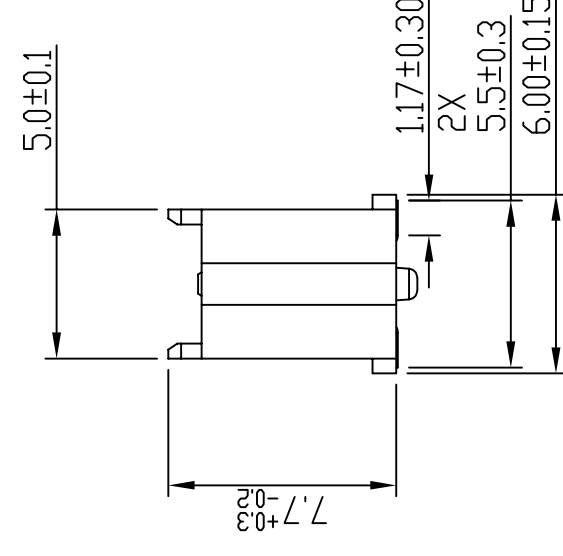
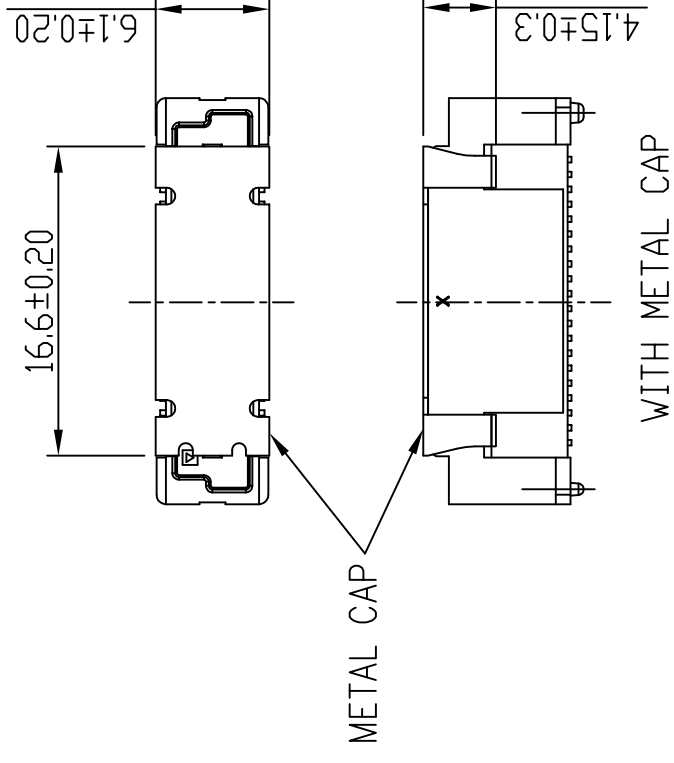
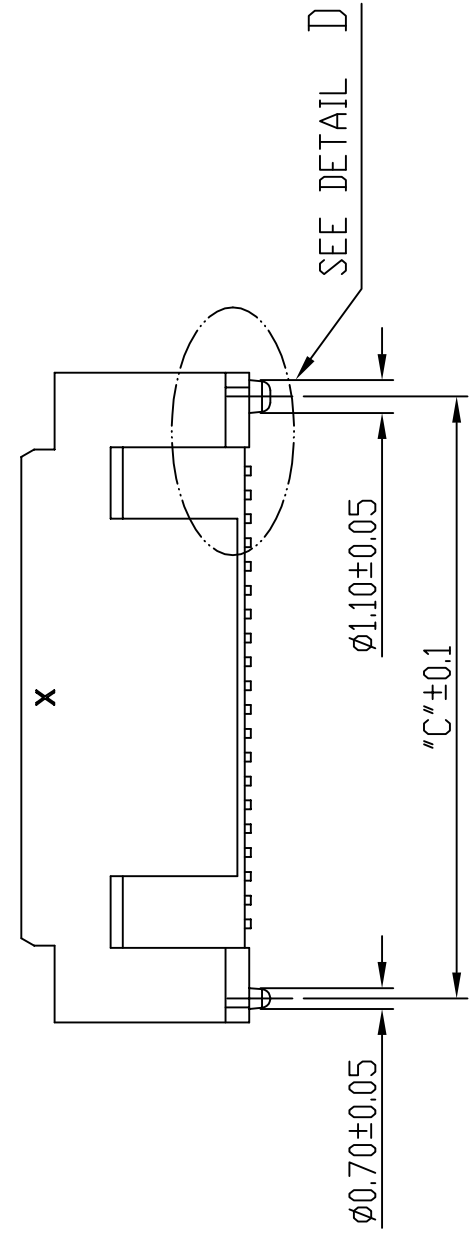
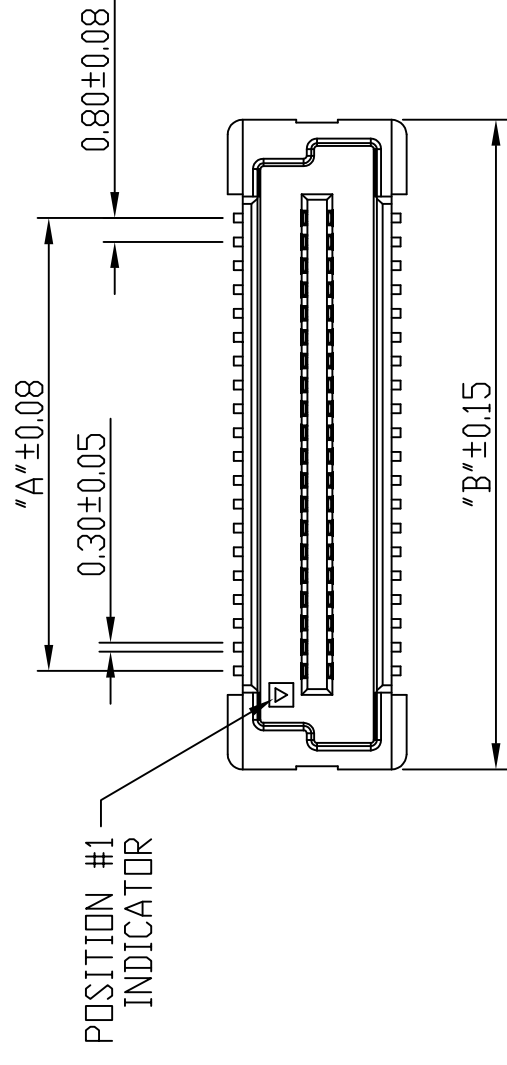
DAY(01~31)
MONTH(01~12)
YEAR(00~99)

DETAIL CC

mat'l. code		surface	tolerance	projection	product family
itr	ecn no	ISO 1302	ISO 406	ISO 1101	BERGSTAK HPL545
AT	dr	tolerances unless otherwise specified	ISO 1101	mm	title
	date	angles	.0±.2	mm	PLUG ASSY
		linear	.00±.15	scale 1:1	BERGSTAK 0.8MM
		0°±3°	.000±.10		dwg no
		dr	GuoMin Sun	2014-10-21	sheet 4 of 6
		eng	Bob Gu	2020-06-28	size
		chr	LQ Lei	2020-06-28	A3
		appd	Tim Yao	2020-06-28	61083
sheet index	revision				type
	AT				Product Customer Drawing
1	1				

1 | 2 | 3 | 4 | 5 | 6

PRODUCT NO.	NO. OF POSITION	DIMENSION		
		A	B	C
61083-044***	2X20	15.2	21.8	20.2
61083-064***	2X30	23.2	29.8	28.2
61083-084***	2X40	31.2	37.8	36.2
61083-104***	2X50	39.2	45.8	44.2
61083-124***	2X60	47.2	53.8	52.2
61083-144***	2X70	55.2	61.8	60.2
61083-164***	2X80	63.2	69.8	68.2
61083-184***	2X90	71.2	77.8	76.2
61083-204***	2X100	79.2	85.8	84.2



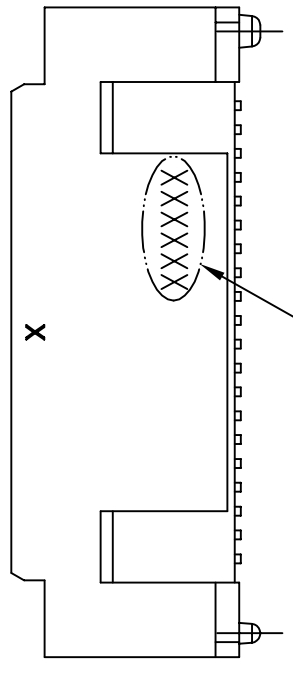
DATE CODE: XXXXXX

DAY(01~31)

MONTH(01~12)

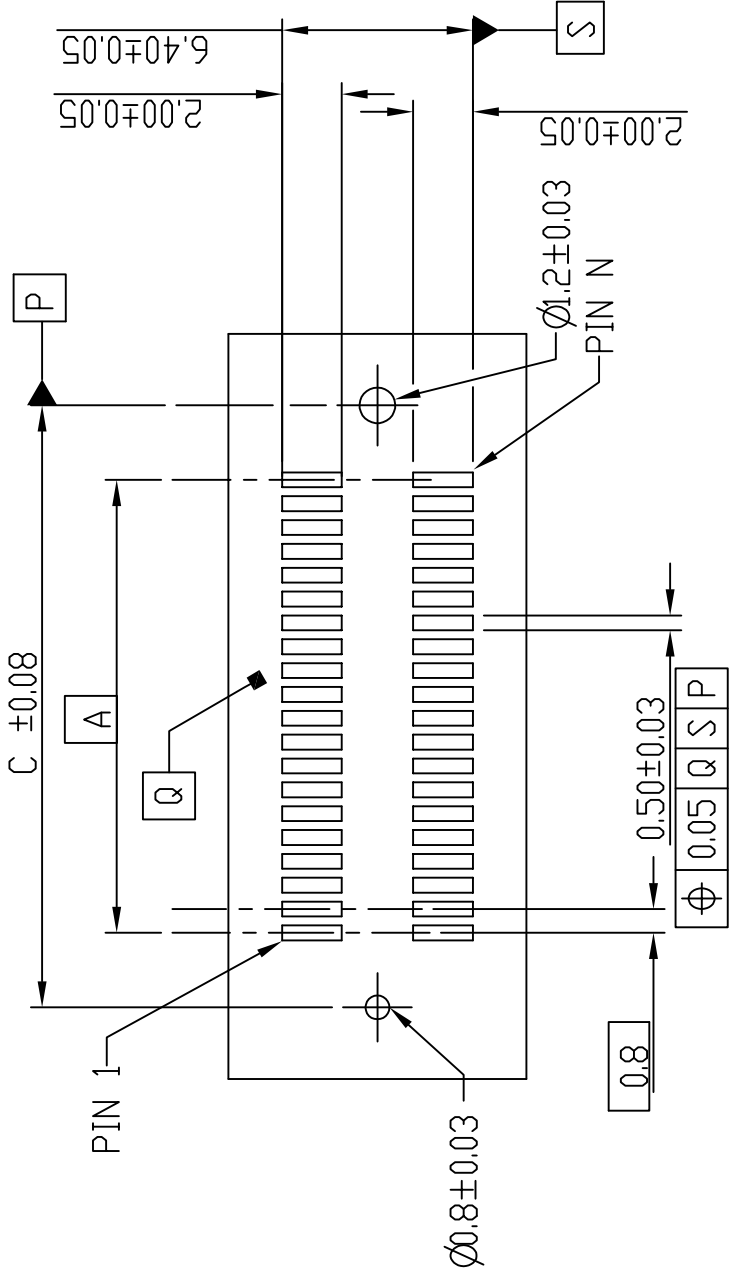
YEAR(00~99)

DETAIL DD

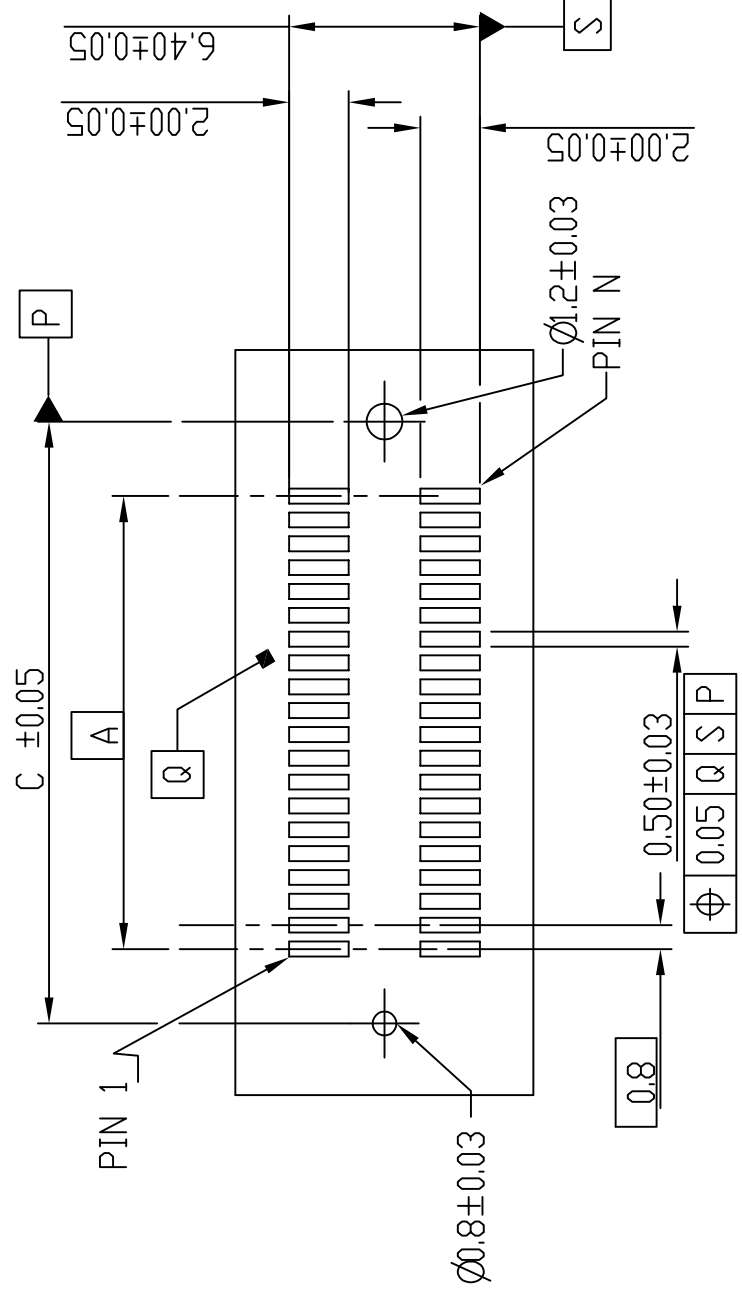


mat'l. code		surface	tolerance	projection	product family
ISO 1302	ISO 406	ISO 1101	ISO 1101	BERGSTAK HPL545	
ecn no	dr	date	tolerances unless otherwise specified	angles	linear
AT			.0±.2	0°±3'	mm
			.00±.15		scale 1:1
			.000±.10		
dr	GuoMin	Sun	2014-10-21	Amphenol	FCI
eng	Bob	Gu	2020-06-28	PLUG ASSY	BERGSTAK 0.8MM
chr	LQ	Lei	2020-06-28		
appd	Tim	Yao	2020-06-28		
sheet index	revision	AT		dwg no	sheet 5 of 6
1	1			61083	A3
				type	Product Customer Drawing

FOR PLUG 1/2/3/4



RECOMMENDED PCB LAYOUT WITHOUT PEG FOR
 NO. OF POS 2X10, 2X20, 2X30, 2X40, 2X50 2X60



RECOMMENDED PCB LAYOUT WITH PEG FOR
 NO. OF POS 2X10, 2X20, 2X30, 2X40, 2X50 2X60