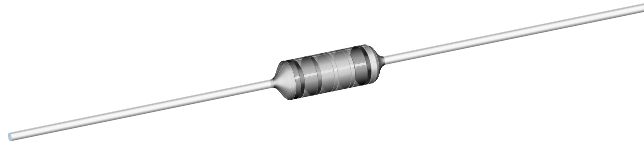


Metal Film Resistors, Industrial Power, Flameproof



FEATURES

- Small size suitable for 1/2, 1 & 2 watt applications
- High power rating, small size
- Flameproof, high temperature coating meets EIA RS-325-A
- Excellent high frequency characteristics
- Low noise
- Low voltage coefficient
- Tape and reel packaging for automatic insertion (52.4 mm inside tape spacing per EIA-296-E)
- Lead (Pb)-free version is RoHS Compliant



RoHS*
COMPLIANT

STANDARD ELECTRICAL SPECIFICATIONS							
GLOBAL MODEL	HISTORICAL MODEL	POWER RATING $P_{70\text{ }^\circ\text{C}}$ W	LIMITING ELEMENT VOLTAGE MAX. $V \cong$	TEMPERATURE COEFFICIENT ppm/°C	TOLERANCE %	RESISTANCE RANGE Ω	E-SERIES
CCF02	CCF-2	2.0	350	100	$\pm 1, \pm 5$	4R99 - 1M	96 for 1 % tolerance 24 for 5 % tolerance

TECHNICAL SPECIFICATIONS		
PARAMETER	UNIT	CCF02
Rated Dissipation at 70 °C	W	2.0
Maximum Working Voltage	$V \cong$	≤ 350
Insulation Voltage (1 min)	V_{eff}	> 500
Dielectric Strength	VAC	900
Insulation Resistance	Ω	$\geq 10^{11}$
Operating Temperature Range	°C	- 65 / + 230
Terminal Strength (pull test)	lb	2
Failure Rate	$10^{-9}/\text{h}$	< 1
Weight (max)	g	0.35

MATERIAL SPECIFICATIONS	
Element:	Proprietary nickel-chrome film
Solderability:	Satisfactory per MIL-STD-202, Method 208.
Core:	Fire-cleaned high purity ceramic
Termination:	Standard lead material is solder-coated copper. Solderable and weldable per MIL-STD-1276, Type C.

MARKING	
-	5 band colorband for $\pm 1\%$
-	4 band colorband for $\pm 5\%$

GLOBAL PART NUMBER INFORMATION

New Global Part Numbering: CCF02301RFKR36 (preferred part numbering format)

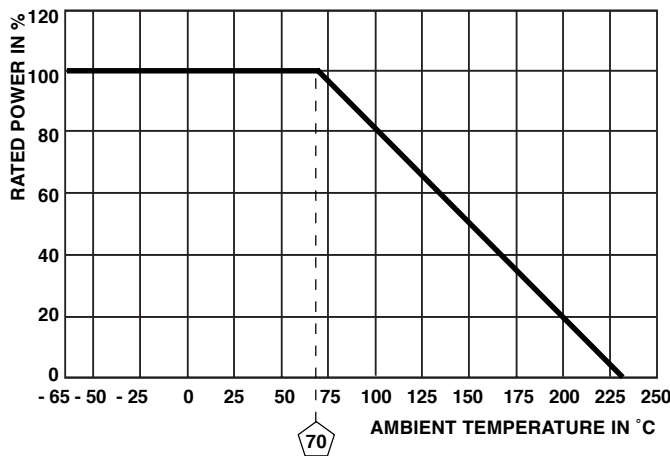
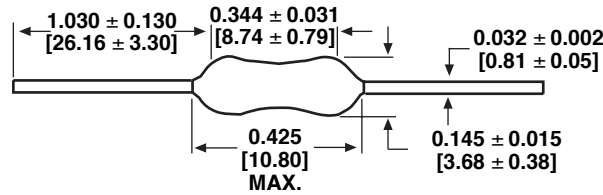
C	C	F	0	2	3	0	1	R	F	K	R	3	6			
GLOBAL MODEL		RESISTANCE VALUE				TOLERANCE CODE		TEMPERATURE COEFFICIENT		PACKAGING			SPECIAL			
CCF02		R = Decimal K = Thousand M = Million 4R99 = 4.99 Ω 680K = 680 k Ω 1M00 = 1.0 M Ω				F = $\pm 1\%$ J = $\pm 5\%$		K = 100 ppm		E36 = Lead Free, T/R (2500 pcs) R36 = Tin/Lead, T/R (2500 pcs)			Blank = Standard (Dash Number) (up to 3 digits) From 1-999 as applicable			

Historical Part Number example: CCF-23010F (will continue to be accepted)

CCF-2	3010	F	R36
HISTORICAL MODEL	RESISTANCE VALUE	TOLERANCE CODE	PACKAGING

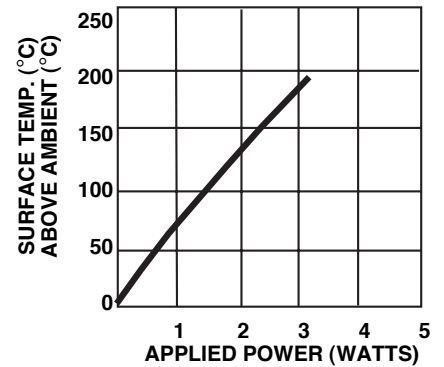
* Pb containing terminations are not RoHS compliant, exemptions may apply

DIMENSIONS in inches [millimeters]



Surface temperatures were taken with an infrared pyrometer in + 25 °C still air.

Resistors were supported by their leads in test clips at a point 0.5" [12.70 mm] out from the resistor body ends.



DERATING

SURFACE TEMPERATURE vs POWER

PERFORMANCE	
TEST	MAX. ΔR (Typical Test Lots)
Thermal Shock	± 1.0 %
Short Time Overload	± 0.5 %
Low Temperature Operation	± 0.5 %
Moisture Resistance	± 1.5 %
Resistance to Soldering Heat	± 0.5 %
Shock	± 0.5 %
Vibration	± 0.5 %
Terminal Strength	± 0.5 %
Dielectric Withstanding Voltage	± 0.5 %
Life	± 2.0 %



Disclaimer

All product specifications and data are subject to change without notice.

Vishay Intertechnology, Inc., its affiliates, agents, and employees, and all persons acting on its or their behalf (collectively, "Vishay"), disclaim any and all liability for any errors, inaccuracies or incompleteness contained herein or in any other disclosure relating to any product.

Vishay disclaims any and all liability arising out of the use or application of any product described herein or of any information provided herein to the maximum extent permitted by law. The product specifications do not expand or otherwise modify Vishay's terms and conditions of purchase, including but not limited to the warranty expressed therein, which apply to these products.

No license, express or implied, by estoppel or otherwise, to any intellectual property rights is granted by this document or by any conduct of Vishay.

The products shown herein are not designed for use in medical, life-saving, or life-sustaining applications unless otherwise expressly indicated. Customers using or selling Vishay products not expressly indicated for use in such applications do so entirely at their own risk and agree to fully indemnify Vishay for any damages arising or resulting from such use or sale. Please contact authorized Vishay personnel to obtain written terms and conditions regarding products designed for such applications.

Product names and markings noted herein may be trademarks of their respective owners.

Mouser Electronics

Authorized Distributor

Click to View Pricing, Inventory, Delivery & Lifecycle Information:

Vishay:

[CCF027K87FKR36](#) [CCF021K50JKR36](#) [CCF026K20JKR36](#) [CCF022K40JKR36](#) [CCF028K45FKR36](#)
[CCF0256K2FKR36](#) [CCF02110RJKR36](#) [CCF0218K2FKR36](#) [CCF024K80FKR36](#) [CCF02180KJKR36](#)
[CCF02511RFR36](#) [CCF0220K0JKR36](#) [CCF0224K0JKR36](#) [CCF023K01FKR36](#) [CCF0233K0FKR36](#)
[CCF0211K0FKR36](#) [CCF0224K0FKR36](#) [CCF0220K0FKR36](#) [CCF0268R0JKR36](#) [CCF0247R0JKR36](#)
[CCF022K40FKR36](#) [CCF024R99FKR36](#) [CCF022K10FKR36](#) [CCF022K37FKR36](#) [CCF0236K0JKR36](#)
[CCF022K70JKR36](#) [CCF022K20JKR36](#) [CCF021K00FKR36](#) [CCF021M00FKR36](#) [CCF02178KFKR36](#)
[CCF02174KFKR36](#) [CCF0268K0JKR36](#) [CCF02100KFKR36](#) [CCF022K49FKR36](#) [CCF025K30FKR36](#)
[CCF0239R2FKR36](#) [CCF02121RFR36](#) [CCF02220KJKR36](#) [CCF02301RFR36](#) [CCF026K65FKR36](#)
[CCF02470RJKR36](#) [CCF023K24FKR36](#) [CCF02120KJKR36](#) [CCF022K00JKR36](#) [CCF02330RJKR36](#)
[CCF02604RFR36](#) [CCF021M00JKR36](#) [CCF023K00JKR36](#) [CCF02740RFR36](#) [CCF0240R2FKR36](#)
[CCF0221K0FKR36](#) [CCF02100KJKR36](#) [CCF2205%TR](#) [CCF29.15%TR](#) [CCF02100KJKE36](#) [CCF025R00FKE36](#)
[CCF02665KFKR36](#) [CCF02510RJKR36](#) [CCF0215K0JKR36](#) [CCF0212K0JKR36](#) [CCF0210K0JKR36](#)
[CCF0233K2FKR36](#) [CCF02681RFR36](#) [CCF021K00JKR36](#) [CCF02470KFKR36](#) [CCF02390RJKR36](#)
[CCF02220KFKR36](#) [CCF0222K0FKR36](#) [CCF0212K6FKR36](#) [CCF02909RFR36](#) [CCF02965RFR36](#)
[CCF0226K1FKR36](#) [CCF02134RFR36](#) [CCF024K70FKR36](#) [CCF026R80JKR36](#) [CCF025R00FKR36](#)
[CCF02240RJKR36](#) [CCF02200RJKR36](#) [CCF02220RJKR36](#) [CCF02480RJKR36](#) [CCF02400RJKR36](#)
[CCF0222K1FKR36](#) [CCF0215R0JKR36](#) [CCF023K00FKR36](#) [CCF0249R9FKR36](#) [CCF0275R0JKR36](#)
[CCF023K30JKR36](#) [CCF023K90JKR36](#) [CCF02100RJKR36](#) [CCF0235R0FKR36](#) [CCF02150RJKR36](#)
[CCF0210R0FKR36](#) [CCF0230R0FKR36](#) [CCF0213R0FKR36](#) [CCF02120RJKR36](#) [CCF0225R0FKR36](#)
[CCF0220R0FKR36](#) [CCF027K50JKR36](#) [CCF0230K0JKR36](#) [CCF0247R5FKR36](#)