

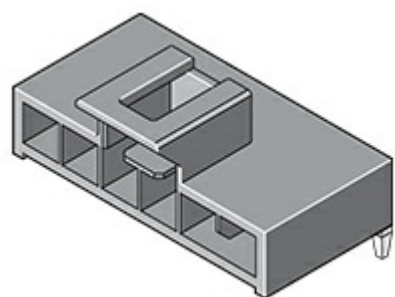
- 
- [Products](#)
- [Industry Solutions](#)
- [CAREERS](#)
- [Resources](#)

- [Find Distributor](#)
- [Contact Molex](#)



## Part Number: 105313-1302

**Nano-Fit™ Right Angle Header, Through Hole, 2.50mm Pitch, Single Row, 2 Circuits, 0.76µm Gold (Au) Plating, Black**



Series image - Reference only

**Status:** Active  
**Series:** [105313](#)  
**Category:** PCB Headers  
**Overview:** [Nano-Fit™ Power Connectors](#)

### Mates With Part(s):

Nano-Fit™ Receptacle Housing [105307](#)

## Product Environmental Compliance

[EU ELV](#):Not Reviewed  
[EU RoHS](#):Not Reviewed  
[China RoHS](#):Not Reviewed  
[REACH SVHC](#):Not Reviewed  
[Low-Halogen Status](#):Not Reviewed

## Part Detail

### General

<b>Status</b>	<b>Active</b>
<b>Category</b>	PCB Headers
<b>Series</b>	<a href="#">105313</a>
<b>Application</b>	Power, Wire-to-Board
<b>Overview</b>	<a href="#">Nano-Fit™ Power Connectors</a>
<b>Product Literature Order No</b>	987651-1223
<b>Product Name</b>	Nano-Fit™
<b>UPC</b>	887191929040

### Physical

<b>Breakaway</b>	No
<b>Circuits (Loaded)</b>	2
<b>Circuits (maximum)</b>	2
<b>Color - Resin</b>	Black
<b>Durability (mating cycles max)</b>	50
<b>Flammability</b>	94V-0
<b>Glow-Wire Compliant</b>	No
<b>Guide to Mating Part</b>	No
<b>Keying to Mating Part</b>	Yes
<b>Lock to Mating Part</b>	Yes
<b>Material - Metal</b>	Brass
<b>Material - Plating Mating</b>	Gold over Nickel
<b>Material - Plating Termination</b>	Tin over Nickel
<b>Material - Resin</b>	Liquid Crystal Polymer
<b>Net Weight</b>	0.300/g
<b>Number of Rows</b>	1
<b>Orientation</b>	Right Angle
<b>PC Tail Length</b>	3.20mm

<b>PCB Locator</b>	Yes
<b>PCB Retention</b>	Yes
<b>PCB Thickness - Recommended</b>	1.60mm, 2.40mm
<b>Packaging Type</b>	Tray
<b>Pitch - Mating Interface</b>	2.50mm
<b>Pitch - Termination Interface</b>	2.50mm
<b>Plating min - Mating</b>	0.762µm
<b>Plating min - Termination</b>	1.524µm
<b>Polarized to Mating Part</b>	Yes
<b>Polarized to PCB</b>	Yes
<b>Shrouded</b>	Yes
<b>Stackable</b>	No
<b>Surface Mount Compatible (SMC)</b>	No
<b>Temperature Range - Operating</b>	-40°C to +115°C
<b>Termination Interface: Style</b>	Through Hole

**Electrical**

---

**(Please review the Product Specification for specific details.)**

<b>Current - Maximum per Contact</b>	6.5A
<b>Voltage - Maximum</b>	300V

**Agency Certification**

Please find UL Certificates by searching the UL Database using the Molex Series Number. [Click here to visit the UL Database](#)

<b>CSA</b>	LR19980
<b>UL</b>	E29179

**Material Info**

**Reference - Drawing Numbers**

<b>Packaging Specification</b>	PK-105309-400
<b>Sales Drawing</b>	SD-105313-100

**Application Tooling**

Tooling specifications and manuals are found by selecting the products below.

Crimp Height Specifications are then contained in the Application Tooling Specification document.

**Previously Available Application Tooling**

[Check our list of old tooling that used to be available for this part](#)

**Products**

- Antennas
- Application Tooling
- Cable Assemblies
- Connected Lighting
- Connectors
- Copper Flex
- Electrical Products
- Industrial Automation
- Membrane Switches
- Optical Solutions
- PCB Assemblies

**Quick Links**

- [Company Information](#)
- [Contact Molex](#)
- [Cross-Reference](#)
- [Koch Industries](#)
- [Industries](#)
- [Literature](#)
- [Press Room / Press Releases](#)
- [Product Index](#)
- [Sitemap](#)

**Resources**

- [California Supply Chains Act](#)
- [Compliance](#)
- [ecocare](#)
- [Feedback | Help](#)
- [Jobs](#)
- [Legal | Trademarks](#)
- [Mobile Site](#)
- [Supplier Portal](#)
- [Privacy Policy](#)
- [Tradeshows](#)

**Stay Connected**

