

Euromas ABS / PC / F05

Enclosure, polycarbonate



M 227

Order no.: 02227000

* = Available on request.

Characteristics

Colour of enclosure group

Light grey

Protection class

IP 65

Enclosure Material

ABS, PC (UV stabilised) and selected sizes in PC UL 94 V0
(additional UL 94 V0 versions on request), seal made of CR;

V215: Vestamid, CR seal; for details see Technical Information

Scope of delivery

Lid and base, lid screws made of V2A, self-tapping screws for
mounting bosses

Note

G = Design with crystal-clear lid.

IP = Ingress protection acc. to DIN EN 60529

Important!

To compensate for pressure when temperatures change and cause moisture in the enclosure, we recommend that you use a pressure compensation element.

» Additional information

Technical documentation / Downloads

Technical drawings

3D product data in STEP format: Registration necessary

Product information

Euromas ABS PC GB.pdf (337.6 KB)

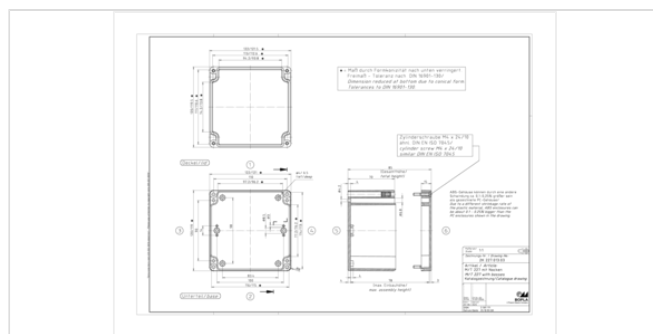
20.09.2019

Dimensions

Dimensions

122 x 120 x 85 mm

Product drawing



Product drawing in PDF format: 02227000 M-227.pdf (89.8 KB)
Product drawing in DXF format: 02227000 M-227.dxf (676.1 KB)
Drawing for mechanical processing: 02227000 M-227-G.dxf (359.1 KB)

Milling contours are shown here as a DXF file. (Sub D, USB, HDMI, cable glands, ...)

Works Test Certificates

670 WPZ-Euomas-PC DE.pdf (197.3 KB)
670 WPZ-Euomas-PC EN.pdf (191.1 KB)

Matching accessories



Mounting plates, laminated paper (Pertinax), galvanised steel for version 260

22000500 M For EM/ET 217, EM/ET 227, M/T 217, M/T 227-228



Knurled screws

22003100 RD For M/T 210-215, M/T 217, M/T 220-227, M/T 231



Rubber feet, plug-in

22003300 F For M/T 208-260



Wall brackets on rear, screw-on, polycarbonate

22004900 WL For M/T 210-243, M/T 246-253



DIN rails DIN EN 60715 TH 15, galvanised steel

22001900 TS 15 For M/T 215-217, M/T 226-230



DIN rails DIN EN 60715 TH 35, galvanised steel

22001910 TS 35 For M/T 215-217, M/T 226-230



Screws (SHR) and distance bolts (DIBLZ) for mounting bosses in plastic enclosures

59006101 SHR Z B4,5x7,8 SD = 4.5 / ND = 4.0 / KD = 7.5



Threaded inserts, brass, for mounting bosses in plastic enclosures

59002810	DODGE M3x6,5	ND = 4.0 x 6.5
59002820	DODGE M4x9,5	ND = 5.4 x 9.5