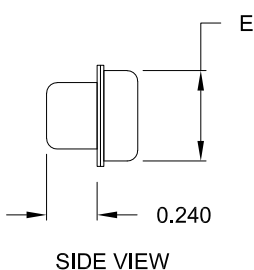
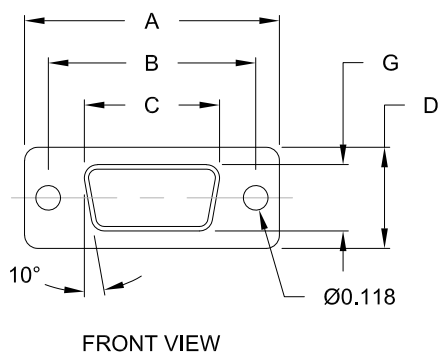
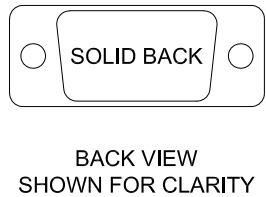


MATERIAL:
SHELL: TIN PLATED STEEL



No. OF PINS	DIMENSIONS (IN.)						
	A	B	C	D	E	F	G
9	1.205	0.984	0.642	0.480	0.429	0.760	0.315
15	1.535	1.311	0.969	0.480	0.429	1.083	0.315
25	2.079	1.850	1.512	0.480	0.429	1.630	0.315
37	2.724	2.500	2.157	0.480	0.429	2.278	0.315
50	2.622	2.406	2.059	0.598	0.535	2.182	0.433



CFYYS


SERIES _____
POSITIONS _____
09
15
25
37
50
GENDER _____
S = FEMALE

****NOTE: COVER IS USED TO MATE/COVER MALE CONNECTORS**

RoHS COMPLIANT

UNITS = inch

DO NOT SCALE FROM DRAWING

 THESE DRAWINGS AND SPECIFICATIONS ARE THE PROPERTY OF NorComp AND SHALL NOT BE REPRODUCED, COPIED OR USED AS THE BASIS FOR THE MANUFACTURE OR SALE OF APPARATUS WITHOUT WRITTEN PERMISSION.

DRAWN:
C. SMITH
DATE:
01/17/2008

NorComp

SCALE: NTS	SHEET 1	OF 1	REV 3
DWG NO. CFYYS			

Mouser Electronics

Authorized Distributor

Click to View Pricing, Inventory, Delivery & Lifecycle Information:

[NorComp:](#)

[CF09S](#) [CF15S](#) [CF25S](#) [CF37S](#) [CF50S](#)