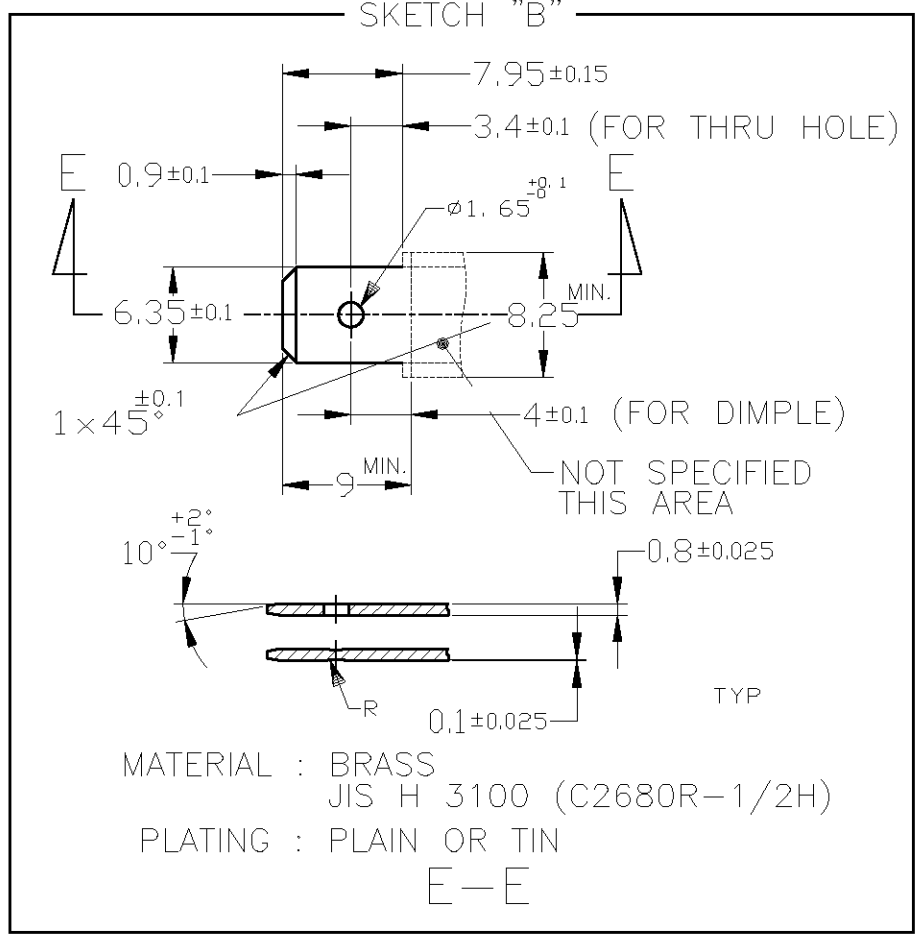
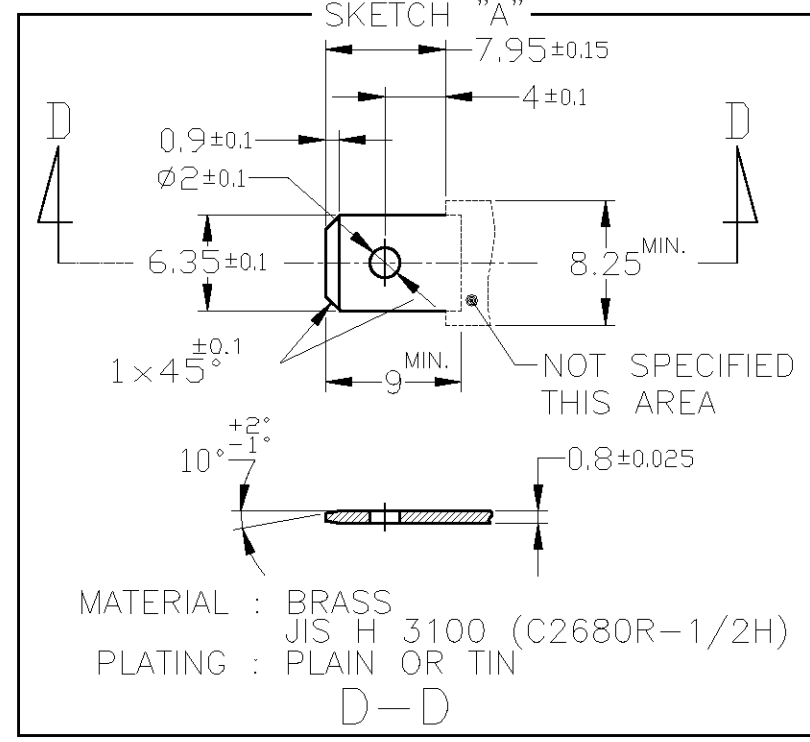
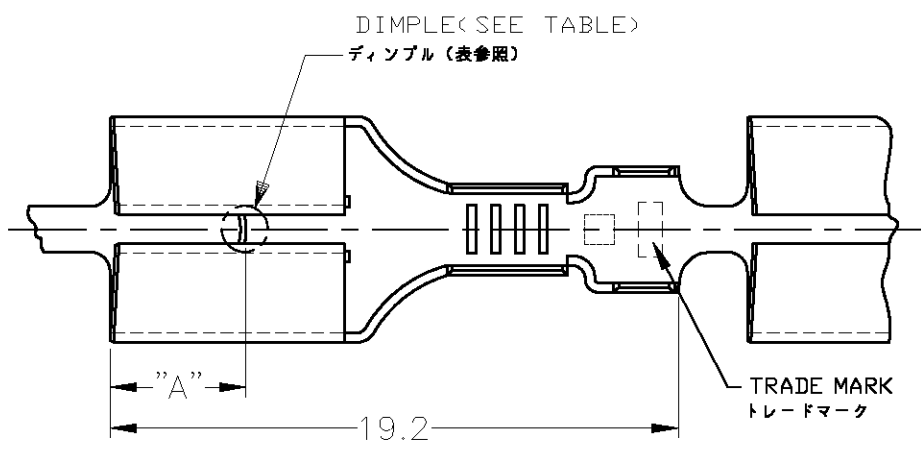


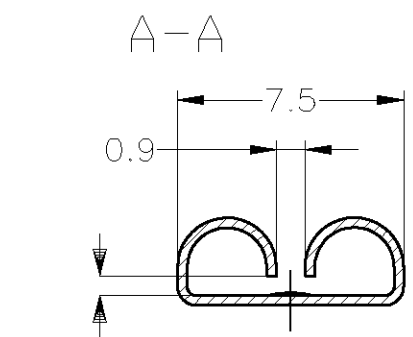
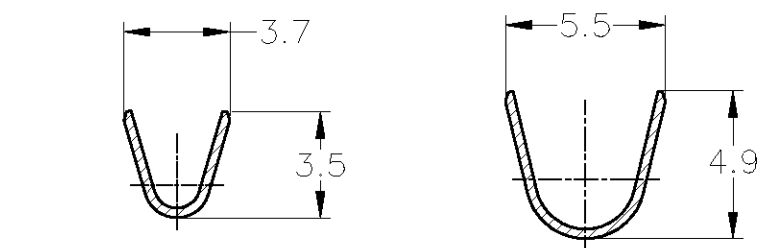
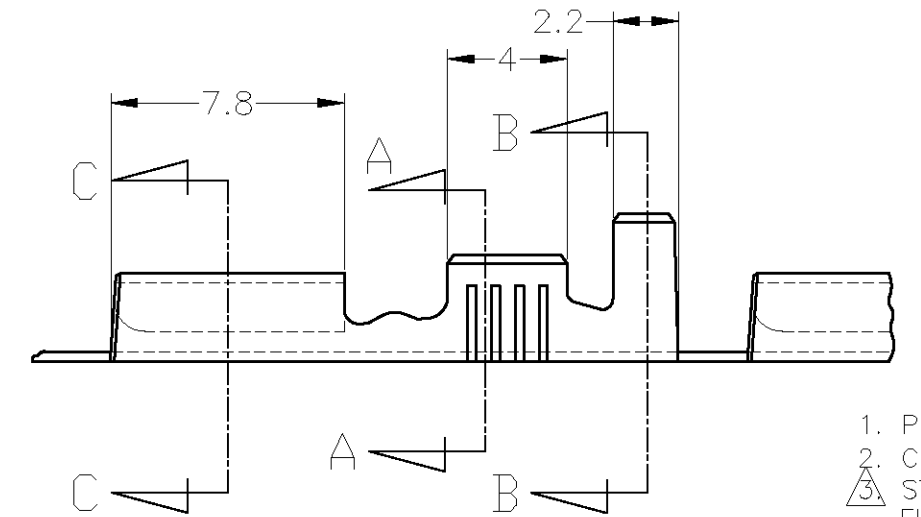
LOG	DIST	REVISIONS					
J	-	P	LTR	DESCRIPTION	DATE	DWN	APVD
		U		REVISED	ECR-08-029624	21NOV'08	J.S N.Y

推奨タブ図

RECOMMENDED TAB DIMENSIONS



1. PRODUCT SPEC : 108-5153, 108-5169
2. CRIMP SPEC : 114-5052
3. STRESS RELIEVING FINISH IS SUBJECT TO CHANGE BY THE TYPE OF STRESS RELIVING PROCESS  
INERT GAS FURNACE - - - -MATTE  
ATOMOSPHERIC FURNACE FOLLOWED BY ACID PICKLE - - - -BRIGHT
4. ELIMINATION STRESS RELIVING PROCESS
5. PRODUCT SPECIFICATION: 108-5147
6. QUALIFICATION TEST REPORT: 501-5050



OBSOLETE	AMP AUSTRALIAN PRODUCT	170030-1	W/O DIMPLE	△	BRASS	-/-	-/-	6-170032-2
	OR EQUIVALENT TO 170030	170030-3	W/O DIMPLE	TIN PLATING	ZKLF-5 #4	-/-	-/-	170032-6
	OR EQUIVALENT TO 170030	170256-3	W/O DIMPLE	TIN PLATING	BRASS	-/-	179461-5	170032-5
	OR EQUIVALENT TO 170256	SKETCH, "A"	WITH DIMPLE	TIN PLATING	BRASS	4.5	-/-	170032-4
	OR EQUIVALENT TO 170256	SKETCH, "A" OR "B"	WITH DIMPLE	-/-	BRASS	3.8	-/-	170032-3
	OR EQUIVALENT TO 170030	170030-1	W/O DIMPLE	-/-	BRASS	-/-	-/-	170032-2
	OR EQUIVALENT TO 170030	SKETCH, "A"	WITH DIMPLE	-/-	BRASS	4.5	-/-	170032-1
		MATING TAB	DIMPLE	FINISH	MATERIAL	"A"	LOOSE PIECE NUMBER	PART NUMBER

1. 製品規格 : 108-5153, 108-5169
2. 取付適用規格 : 114-5052
3. ストレス除去処理  
処理方法により外観が変わります。  
不活性ガス加熱方式 - - - 無光沢  
大気加熱方式 - - - 光沢
4. ストレス除去処理をしない。
5. 製品規格 : 108-5147
6. 認定試験報告書 : 501-5050

THIS DRAWING IS A CONTROLLED DOCUMENT.

DWN A.YAMAGUCHI 23JUN04  
CHK K.BETSUI 23JUN04  
APVD K.BETSUI 23JUN04

**Tyco Electronics** Tyco Electronics AMP K.K. Kawasaki, Japan

NAME 250 SERIES RECEPTACLE WITHOUT LATCH

PRODUCT SPEC 製品規格 SEE NOTE  
APPLICATION SPEC 取付適用規格 -

SIZE A3 CAGE CODE 00779 DRAWING NO. 番号 170032 RESTRICTED TO -

WEIGHT -

CUSTOMER DRAWING SCALE 4:1 SHEET 1 OF 1 REV U

WIRE RANGE 0.5-2.27mm<sup>2</sup>(AWG20-14)  
INSULATION DIA. 2.16~3.43mmφ

MATERIAL 0.32 THK  
FINISH 仕上 SEE TABLE △

DIMENSIONS: 単位: 耗 mm  
TOLERANCES UNLESS OTHERWISE SPECIFIED: 一般公差 ±0.4

0-PLC ±  
1-PLC ±  
2-PLC ±  
3-PLC ±  
4-PLC ±  
ANGLES ±3°