

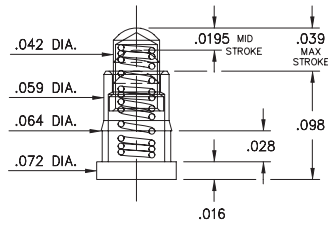
SPRING-LOADED PINS

DISCRETE SPRING-LOADED CONTACTS • SURFACE MOUNT

0900-0

0900-0-15-20-76-14-11-0

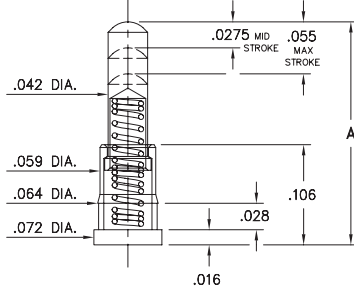
"Legacy P/N 0900-0-00-00-00-00-11-0"
Short stroke, Surface mount



0900-1 ⇨ 4,8

0900-X-15-20-75-14-11-0

"Legacy P/N 0900-X-00-00-00-00-11-0"
Standard stroke, Surface mount



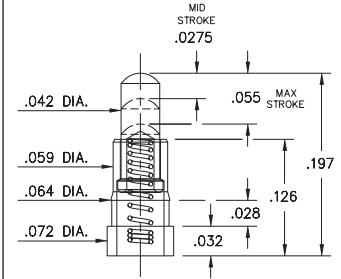
| Basic Part Number | Length A |
|-------------------|----------|
| 0900-1 | .177 |
| 0900-2 | .197 |
| 0900-3 | .217 |
| 0900-4 | .236 |
| * 0900-8 | .155 |

* 0900-8 has a .0195 Mid Stroke & .039 Max. Stroke
Order as:
0900-8-15-20-76-14-11-0

0934

0934-0-15-20-74-14-26-0

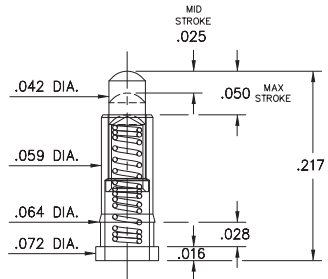
Standard stroke, Surface mount



0936

0936-0-15-20-75-14-11-0

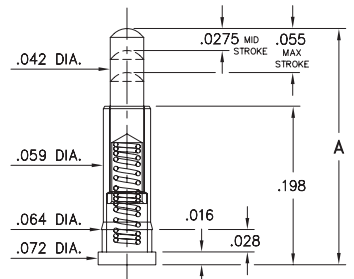
Standard stroke, Surface mount



0907-0 ⇨ 9

0907-X-15-20-75-14-11-0

Standard stroke, Surface mount, Mid profile
Also available with insulated sleeve, see page 19.4

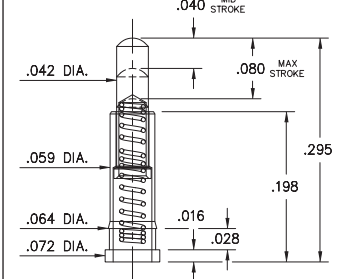


| Basic Part Number | Length A |
|-------------------|----------|
| 0907-0 | .255 |
| 0907-1 | .275 |
| 0907-2 | .295 |
| 0907-3 | .315 |
| 0907-4 | .335 |
| 0907-5 | .350 |
| 0907-6 | .370 |
| 0907-7 | .390 |
| 0907-8 | .410 |
| 0907-9 | .430 |

0928

0928-0-15-20-77-14-11-0

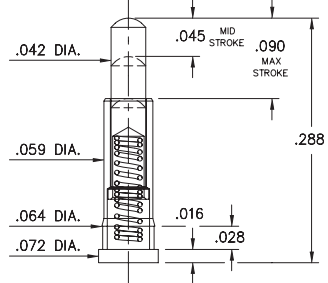
Long stroke, Surface mount



0913

0913-0-15-20-77-14-11-0

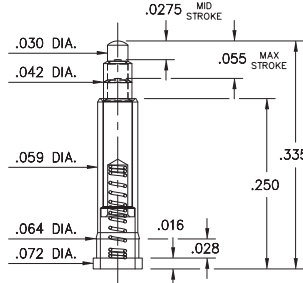
Long stroke, Surface mount, Mid profile



0925

0925-0-15-20-73-14-26-0

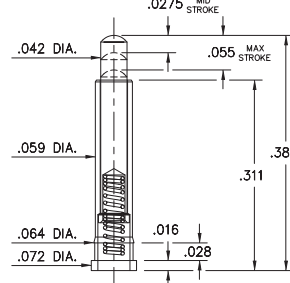
Standard stroke, Surface mount
Reduced plunger



0927

0927-0-15-20-75-14-11-0

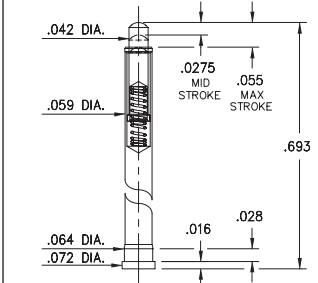
Standard stroke, Surface mount, Mid profile



0905

0905-0-15-20-75-14-11-0

"Legacy P/N 0905-0-00-00-00-00-11-0"
Standard stroke, Surface mount, High profile



Material Specifications:

Sleeve & Plunger Material: Copper Alloy
Spring Material: Beryllium Copper
Sleeve & Plunger Finish: 20 μ" Gold over Nickel
Spring Finish: 10 μ" Gold over Nickel
Dimensions: Inches
Tolerances On: Lengths: ± .006
 Diameters: ± .002
 Angles: ± 2°



Mechanical & Electrical Specifications:

Durability: 1,000,000 cycles
Current Rating: 2A continuous, 3A peak
Contact Resistance: 20 mΩ max.
Environmental Specifications:
Operating temperature range: -55/+125°C
73, 74, 75, 76, 77 Springs are not interchangeable

Order Code: 09XX - X - 15 - 20 - 7X - 14 - XX - 0

Spring Number

| Spring Number | Mid. Stroke | Max. Stroke | Force @ Mid. Stroke | Initial Force (Pre-Load) |
|---------------|-------------|-------------|---------------------|--------------------------|
| 73 | .0275 | .055 | 60 g | 25 g |
| 74 | .0275 | .055 | 50 g | 15 g |
| 75 | .0275 | .055 | 60 g | 25 g |
| 76 | .0195 | .039 | 60 g | 25 g |
| 77 | .045 | .090 | 60 g | 25 g |



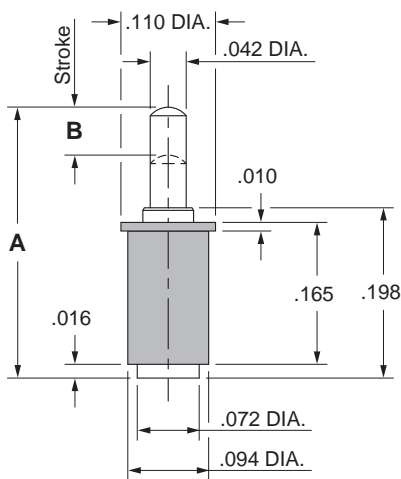
SPRING-LOADED CONNECTORS

SERIES 0907 • DISCRETE INSULATED SPRING-LOADED PINS • SURFACE MOUNT

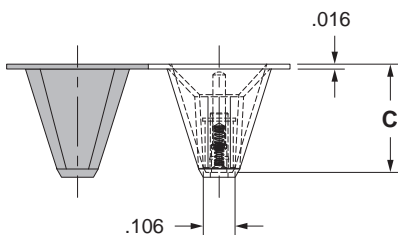


- Discrete insulated spring-loaded pins; available in ten heights from .255" to .430", with working travel of .0275"
- Precision-machined piston / base and gold-plated components assure a 1,000,000 cycle life durability
- Low resistance contacts are rated at 2 amps continuous, 3 amps peak
- High temperature thermoplastic insulators are suitable for SMT soldering processes
- 0907 series, contact styles 0 through 9, are available in bulk or on 16mm wide carrier tape for automated pick and place assembly. Tape and Reel packaging per EIA-481. See below for ordering information

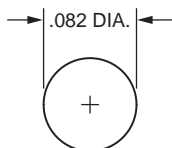
Series 0907 (Contact Style 0-9)



Series 0907 (Tape Pocket Depth)



Series 0907 (Suggested footprint layout)



ORDERING INFORMATION

Series 0907 (Bulk Packaged)

0907-X-53-20-75-14-11-0

Specify contact style 0-9

Series 0907 (Tape & Reel Packaged)

0907-X-63-20-75-14-11-0

Specify contact style 0-9

| Contact Style | Initial Height (A) | Working Travel | Full Stroke Range (B) | Tape Depth (C) | Quantity per Reel |
|---------------|--------------------|----------------|-----------------------|----------------|-------------------|
| 0 | .255 | .0275 | .045-.055 | .285 | 750 |
| 1 | .275 | .0275 | .045-.055 | .285 | 750 |
| 2 | .295 | .0275 | .045-.055 | .326 | 600 |
| 3 | .315 | .0275 | .045-.055 | .326 | 600 |
| 4 | .335 | .0275 | .045-.055 | .361 | 550 |
| 5 | .350 | .0275 | .045-.055 | .361 | 550 |
| 6 | .370 | .0275 | .045-.055 | .401 | 475 |
| 7 | .390 | .0275 | .045-.055 | .401 | 475 |
| 8 | .410 | .0275 | .045-.055 | .441 | 430 |
| 9 | .430 | .0275 | .045-.055 | .441 | 430 |

Technical Specifications

Materials:

Contact piston & base: Machined copper alloy plated 20 μ " gold over 100 μ " nickel
 Spring (Contact style 0-9): Beryllium copper-plated 10 μ " gold
 Insulator: High temperature thermoplastic, rated UL94 V-0

Mechanical:

Spring force @ initial height (A) (Contact style 0-9): 25 grams
 Spring force @ mid stroke (B/2) (Contact style 0-9): 60 grams
 Durability: 1,000,000 cycles

Electrical:

Current rating: 2A (continuous), 3A (peak) per contact
 Contact resistance: 20m Ω max.
 Insulation resistance: 10,000M Ω min.
 Dielectric strength: 700Vrms min.

RoHS-2
2011/65/EU

