

**Accessories**  
**MOFU 35/LO/1 SW**

**Weidmüller Interface GmbH & Co. KG**  
Klingenbergstraße 26  
D-32758 Detmold  
Germany  
Fon: +49 5231 14-0  
Fax: +49 5231 14-292083  
www.weidmueller.com

**Product image****Shielding and earthing**

Our protective earth conductor and shielding terminals featuring different connection technologies allow you to effectively protect both people and equipment from interference, such as electrical or magnetic fields. A comprehensive range of accessories rounds off our range.

**General ordering data**

Type	MOFU 35/LO/1 SW
Order No.	<a href="#">0646210000</a>
Version	Accessories, Mounting foot, Polyamide 66
GTIN (EAN)	4008 19026 1887
Qty.	20 pc(s).

**Accessories**  
**MOFU 35/LO/1 SW**

**Weidmüller Interface GmbH & Co. KG**  
 Klingenbergstraße 26  
 D-32758 Detmold  
 Germany  
 Fon: +49 5231 14-0  
 Fax: +49 5231 14-292083  
 www.weidmueller.com

**Technical data**
**Dimensions and weights**

Width	18 mm	Width (inches)	0.709 inch
Height	58 mm	Height (inches)	2.283 inch
Depth	18.35 mm	Depth (inches)	0.722 inch
Net weight	5.6 g		

**Temperatures**

Continuous operating temp., min.	-50 °C	Continuous operating temp., max.	100 °C
----------------------------------	--------	----------------------------------	--------

**Material data**

Material	Polyamide 66	Insulating material	Wemid
Colour	black	UL 94 flammability rating	V-2

**System specifications**

Version	Mounting foot	End cover plate required	No
Rail	TS 35		

**Additional technical data**

Explosion-tested version	No	Open sides	right
Type of fixing	Snap-on	Type of mounting	Snap-on

**Conductors for clamping (rated connection)**

Connection direction	top	Type of connection	Tension-clamp connection
----------------------	-----	--------------------	--------------------------

**Dimensions**

Pitch in mm (P)	18 mm
-----------------	-------

**Classifications**

ETIM 6.0	EC002848	ETIM 7.0	EC002848
eClass 9.0	27-14-11-92	eClass 9.1	27-14-11-92
eClass 10.0	27-14-11-92	UNSPSC	30-21-18-11

**Approvals**

ROHS	Conform
------	---------

**Downloads**

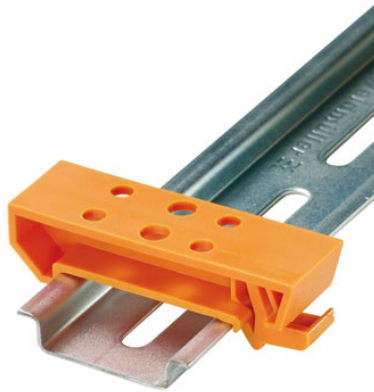
Brochure/Catalogue	<a href="#">CAT 1 TERM 16/17 EN</a> <a href="#">CAT 2 PORTFOLIOWGUIDE EN</a>
Engineering Data	<a href="#">WSCAD, EPLAN</a>
Engineering Data	<a href="#">STEP</a>
User Documentation	<a href="#">StorageConditionsTerminalBlocks</a>

**Accessories**  
**MOFU 35/LO/1 SW**

**Weidmüller Interface GmbH & Co. KG**  
Klingenbergstraße 26  
D-32758 Detmold  
Germany  
Fon: +49 5231 14-0  
Fax: +49 5231 14-292083  
[www.weidmueller.com](http://www.weidmueller.com)

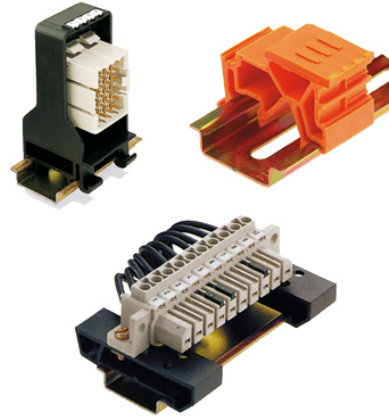
**Drawings**

**Product image**



Similar to illustration

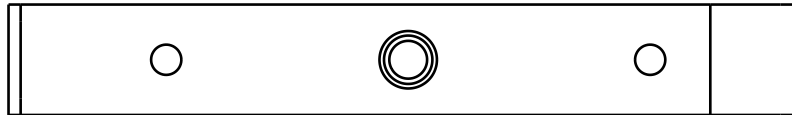
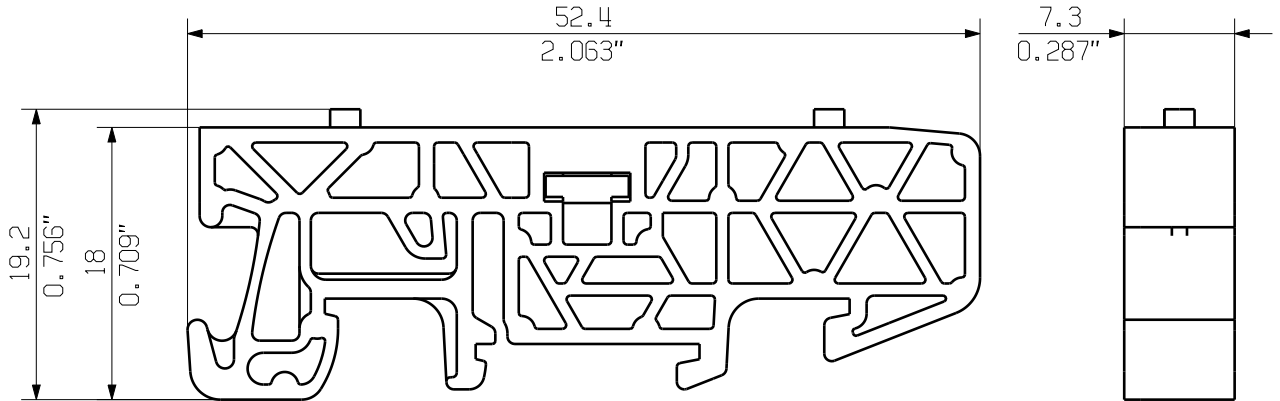
**Example of use**



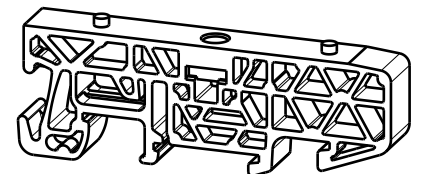
MASSE OHNE TOLERANZ SIND KEINE PRUEFFMASSE  
DIMS. WITHOUT TOLERANCE ARE NOT CONTROL DIMS.

DIE DEUTSCHE VERSION IST VERBINDLICH  
THE GERMAN VERSION IS BINDING

ALLGEMEINGUELTIGE KUNDENZEICHNUNG, AKTUELLER STAND NUR AUF ANFRAGE  
GENERAL CUSTOMER DRAWING, TOPICAL VERSION ONLY IF REQUIRED



M 1/1



WEITERGABE SOWIE Vervielfaeltigung dieses Dokuments, Verwertung und Mitteilung seines Inhalts sind verboten, soweit nicht Ausdruecklich gestattet. ZUWIDERHANDLUNGEN VERPFLICHTEN ZU SCHADENERSATZ. ALLE RECHTE FUER DEN FALL DER PATENT-, GEBRAUCHSMUSTER- ODER GESCHMACKSMUSTEREINTRAGUNG VORBEHALTEN. THE REPRODUCTION, DISTRIBUTION AND UTILIZATION OF THIS DOCUMENT AS WELL AS THE COMMUNICATION OF ITS CONTENTS TO OTHERS WITHOUT EXPLICIT AUTHORIZATION IS PROHIBITED. OFFENDERS WILL BE HELD LIABLE FOR THE PAYMENT OF DAMAGES. WEIDMUELLER EXCLUSIVELY RESERVES THE RIGHT TO FILE FOR PATENTS, UTILITY MODELS OR DESIGNS. © WEIDMUELLER INTERFACE GmbH & Co.KG

GENERAL TOLERANCE:  
DIN ISO 2768-mK



MAX. NRN./NOS.

84373/5 01  
29.09.15  
GUETZLAFF\_T  
MODIFICATION

**Weidmüller**

CAT.NO.: 193760000  
**4 42839 02**  
DRAWING NO. ISSUE NO.  
SHEET 01 OF 01 SHEETS



	DATE	NAME
DRAWN	24.02.2006	NEUMANN_G
RESPONSIBLE		KRUG_M
CHECKED	02.10.2015	LANG_T
APPROVED		LANG_T

**BV/SV 7.62HP MOFU GR**  
MONTAGEFUSS  
SNAP ON FOOT

SCALE: 2/1

SUPERSEDES: .

PRODUCT FILE: SV/BV 7.62 HP

7340