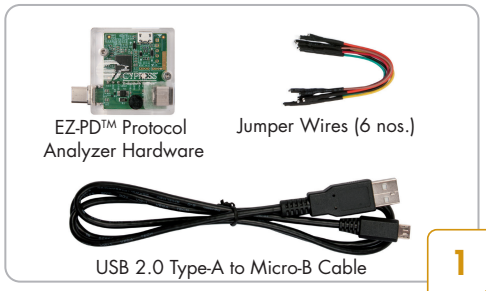
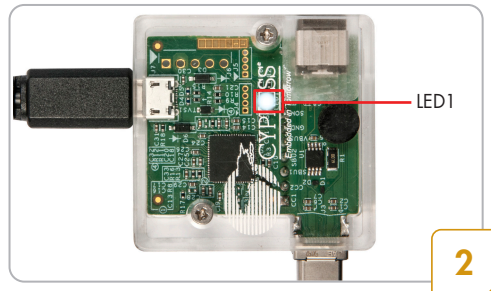


CY4500 EZ-PD™ PROTOCOL ANALYZER

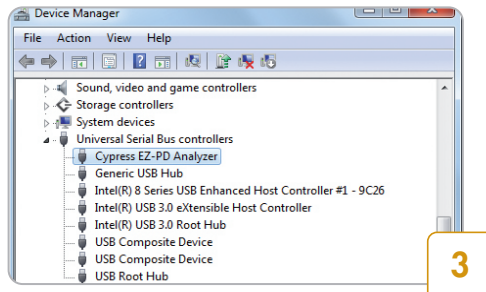


- Review the Analyzer Contents
- Download and install the latest Analyzer Setup CY4500 Setup.exe from www.cypress.com/CY4500

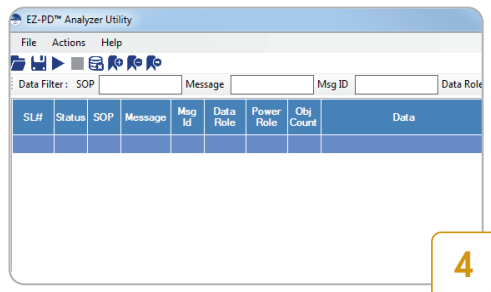
Note: The solder mask color of the analyzer hardware may vary from the image shown in step 1



- Connect the CY4500 EZ-PD™ Protocol Analyzer to your PC via the USB2.0 Type-A to Micro-B Cable provided with the Analyzer. Observe LED1 (white color) blink continuously



- The driver for this Analyzer is installed automatically. The board enumerates as **Cypress EZ-PD Analyzer** under **Universal Serial Bus Controllers** in **Windows Device Manager**
- If the driver is not automatically installed, follow the note given on the next page to perform a manual installation

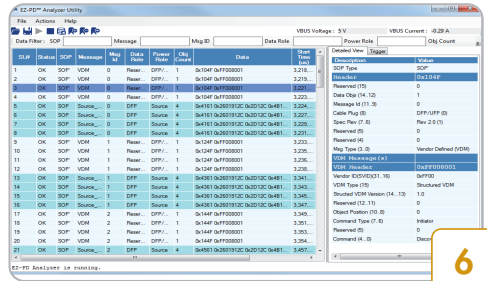
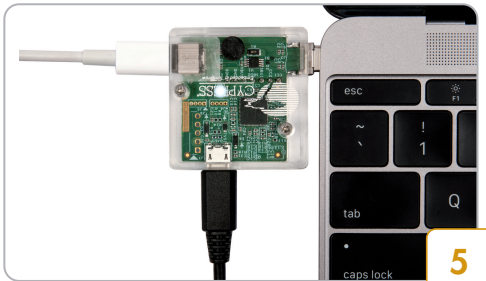


- Launch the EZ-PD™ Analyzer Utility from **Start > All Programs > Cypress > EZ-PD Analyzer Utility**
- Click the **Start Capturing** icon. Alternatively, you can start capturing data by clicking on **Actions > Start Capturing** from the menu bar

Note : Turn over for steps 5 and 6

Upgrade the EZ-PD™ Protocol Analyzer firmware to the latest version before using the analyzer hardware. For more details, click **Help > User Manual** in the EZ-PD™ Analyzer Utility and refer to **Upgrade Firmware** section

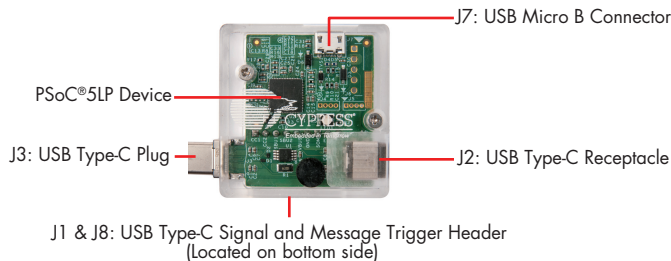
CY4500 EZ-PD™ PROTOCOL ANALYZER



- Connect the CY4500 EZ-PD™ Protocol Analyzer's Type-C plug to the receptacle of a Type-C host device (Notebook shown as an example)
- Connect a USB Type-C power adapter or other device (not provided with the Analyzer) to the Type-C receptacle of the CY4500 EZ-PD™ Protocol Analyzer

- The GUI captures the Power Delivery Packets sent on the CC lines and displays them on the screen. Your display will look similar to the one shown here
- Click on each message in the main panel for its detailed description on the side panel of the GUI
- Refer to the EZ-PD™ Analyzer Utility User Guide for additional details by clicking **Help > User Manual**

CY4500 EZ-PD™ Protocol Analyzer Board Details (Top View)



Note:

- To manually install the driver, in Windows Device Manager, locate the **EZ-PD Protocol Analyzer** under **Other devices** or **Unknown devices**. Right-click the device and select **Update Driver Software**. Choose **Browse my computer for driver software**
- Browse to the location **<Install Directory>\CY4500 EZ-PD Protocol Analyzer\1.0\EZ-PD Analyzer Utility\drivers\bin**. Select a driver based on the OS and click on **Next**. E.g. the driver for Win7 64-bit OS is available at **<Install Directory>\CY4500 EZ-PD Protocol Analyzer\1.0\EZ-PD Analyzer Utility\drivers\bin\Win7\x64**. The default **<Install Directory>** is **C:\Program Files\Cypress** for a 32-bit operating system (OS) and **C:\Program Files (x86)\Cypress** for a 64-bit OS

For the latest information about the Analyzer, visit www.cypress.com/CY4500