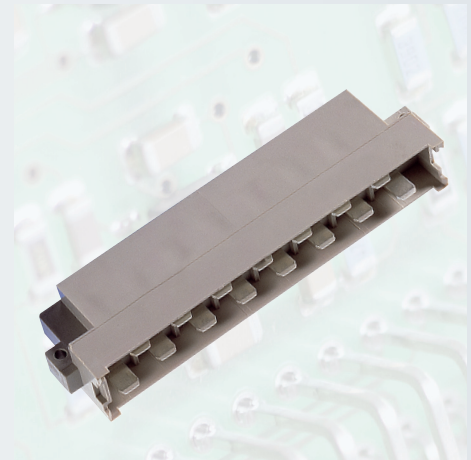


| No. of contacts | Pre-mating contact at position | Contact arrangement | Solder technology – Performance level II |
|-----------------|--------------------------------|---------------------|--|
| | | | Termination length |
| | | | |
| | | | Part number |
| 15 | Z 32 | | 113-40060 |
| 15 | Z 4 and Z 32 | | 113-40160 |
| 15 | – | | 113-40061 |



| | |
|---|--|
| Options – Board lock (see page 159) | On request – Special contact arrangement |
|---|--|