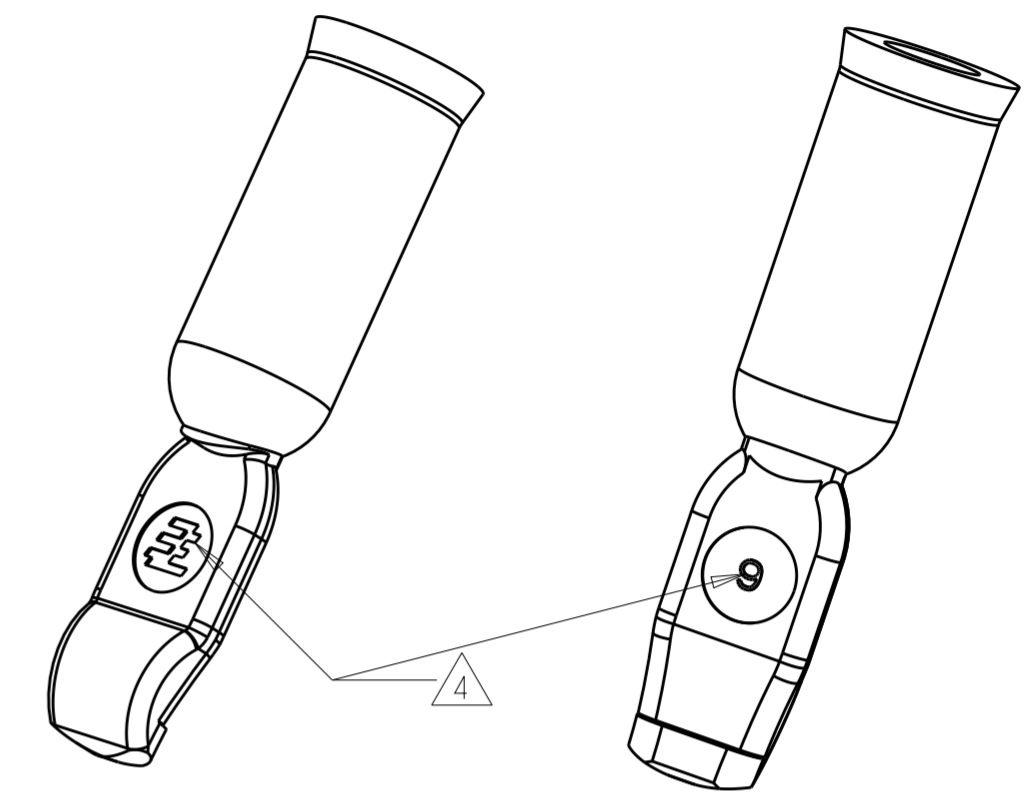
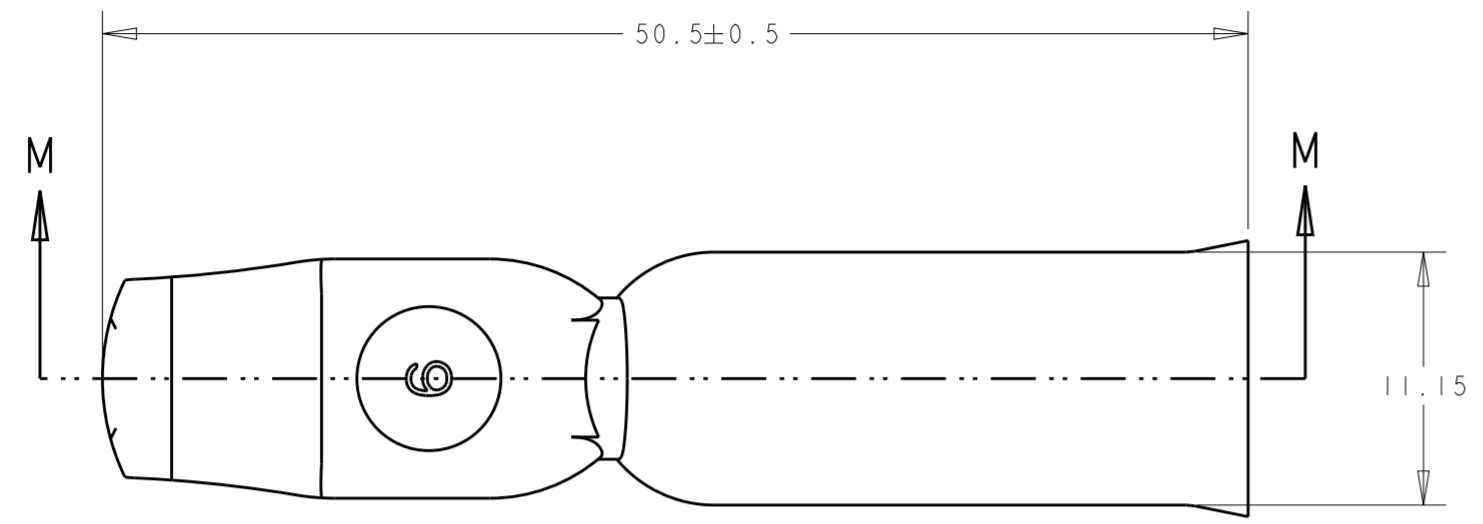
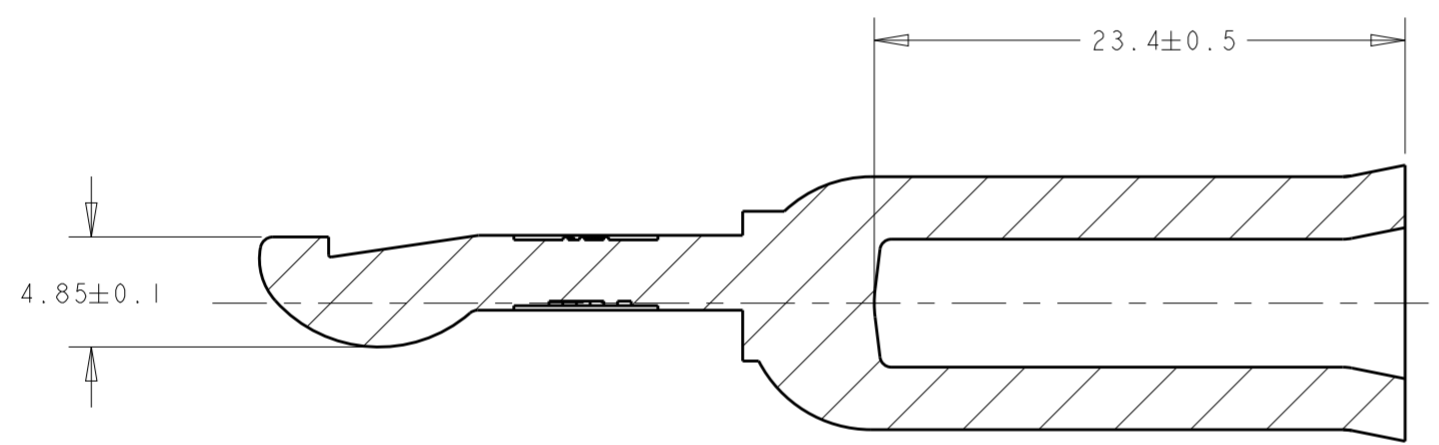


THIS DRAWING IS UNPUBLISHED. RELEASED FOR PUBLICATION 20
 © COPYRIGHT 20 BY TYCO ELECTRONICS CORPORATION. ALL RIGHTS RESERVED.

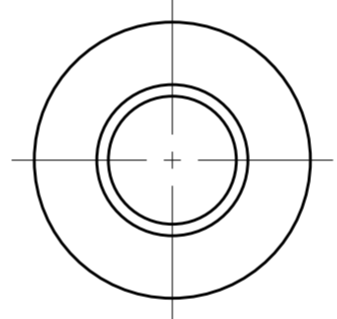
LOC		DIST		REVISIONS			
P	LTR	DESCRIPTION	DATE	DWN	APVD		
	A	REV PER ECR 10-006756	31MAR10	JR	SM		
	B	REV PER ECR-18-000415	18JAN2018	RS	SZ		



SCALE 2:1



SECTION M-M



- 1. MATERIAL: SOFT ANNEALED COPPER.
- 2. PLATING: SILVER PLATE.
- 3. PART HAS PASSED AGENCY APPROVALS BUT HAS NOT COMPLETED THE QUALIFICATION TESTING.

4. STAMP MARK MAY BE ROTATED

1446997-1
PART NUMBER

<small>THIS DRAWING IS A CONTROLLED DOCUMENT FOR TYCO ELECTRONICS CORPORATION. IT IS SUBJECT TO CHANGE AND THE CONTROLLING ENGINEERING ORGANIZATION SHOULD BE CONTACTED FOR THE LATEST REVISION.</small>		DWN 07AUG2009 S. SCHLEGEL CHK 07AUG2009 STRECKEWALD APVD 07AUG2009 STRECKEWALD	Tyco Electronics Harrisburg, PA 17105-3608
DIMENSIONS: mm	TOLERANCES UNLESS OTHERWISE SPECIFIED: 0 PLC ± 1 PLC ±0.5 2 PLC ±0.2 3 PLC ± 4 PLC ± ANGLES ±1° FINISH	PRODUCT SPEC APPLICATION SPEC WEIGHT	NAME CONTACT, AMP POWER SERIES 120, 6 AWG SIZE CAGE CODE DRAWING NO RESTRICTED TO A200779 C-1445997 -
MATERIAL		CUSTOMER DRAWING	SCALE 3:1 SHEET 1 OF 1 REV B

Mouser Electronics

Authorized Distributor

Click to View Pricing, Inventory, Delivery & Lifecycle Information:

[TE Connectivity:](#)

[1445997-1](#)