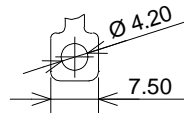


CIRCUIT



TERMINAL DETAIL(3:1)

- NOTE
1. Mounting screw thread length is chassis thickness+3mm max.
 2. Within 30mm from B included knob's height.

TOLERANCES UNLESS OTHERWISE SPEC	
BASIC DIMENSIONS	TOLERANCES
UP TO 10	±0.3
ABOVE 10 TO 100	±0.5
ABOVE 100	±0.8
ANGULAR DIMENSION	±50