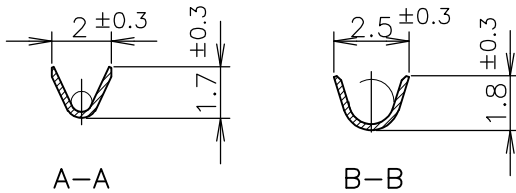
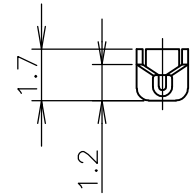
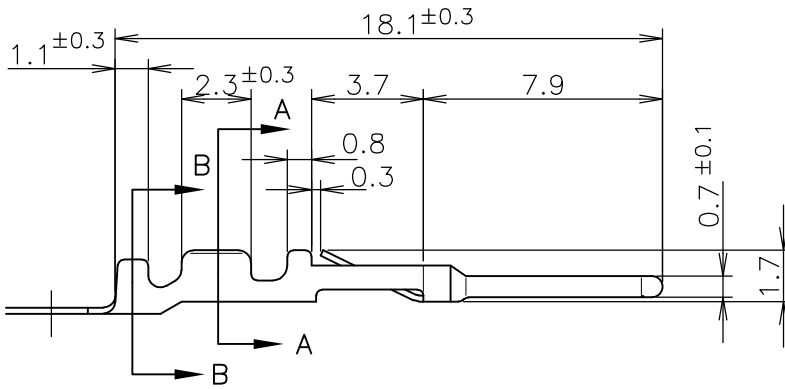
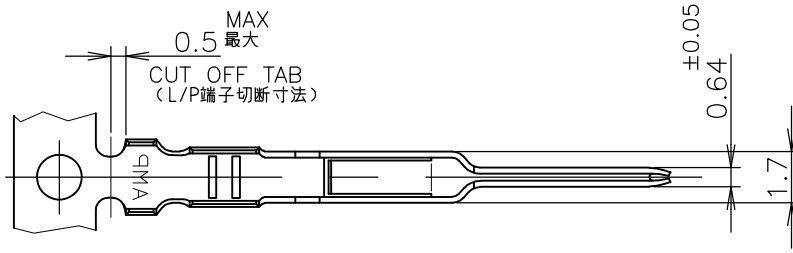


|          |           |                 |     |                           |         |     |      |
|----------|-----------|-----------------|-----|---------------------------|---------|-----|------|
| LOC<br>J | DIST<br>/ | REVISIONS<br>変更 |     |                           | DATE    | DWN | APVD |
|          |           | P               | LTR | DESCRIPTION               |         |     |      |
|          |           |                 | C2  | REVISED PER ECO-11-005030 | 11MAR11 | RK  | HMR  |



- |   |  |
|---|--|
| <p>1 使用ハウジング<br/>172213-*: パネル取付型<br/>172211-*: 宙吊り型</p> <p>2 適用規格<br/>製品規格: 108-5118<br/>取付適用規格: 114-5035</p> <p>3 バラ状端子用手工工具 724685-1</p> <p>④ めっき仕様: ニッケル下地、<br/>接触ピン部のみ金めっき 0.38μ以上</p> | <p>1 APPLICABLE HOUSINGS<br/>172213-*: PANEL MOUNT TYPE<br/>172211-*: FREE HANGING TYPE</p> <p>2 SPECIFICATIONS<br/>PRODUCT SPEC.: 108-5118<br/>APPLICATION SPEC.: 114-5035</p> <p>3 HAND TOOL: 724685-1</p> <p>④ FINISH: 0.00038 MIN GOLD PLT AT PIN AREA<br/>OVER Ni PLT</p> |
|---|--|

|                      |              |                             |            |
|----------------------|--------------|-----------------------------|------------|
| ↑ -3                 | 磷青銅0.2厚 ④    | PHOS-BZ 0.2t ④              | ↑ -3       |
| -2                   | 錫めっき済磷青銅0.2厚 | PRE-TIN PLT<br>PHOS-BZ 0.2t | -2         |
| 170429-1             | 錫めっき済黄銅0.2厚  | PRE-TIN PLT<br>BRASS 0.2THK | 170376-1   |
| バラ状端子<br>LOOSE PIECE | 材質・仕上        | MATERIAL & FINISH           | 型番 PART NO |

|                       |   |                        |            |
|-----------------------|---|------------------------|------------|
| WIRE RANGE<br>包含電線断面積 | (AWG#20-#26)<br>0.14~0.52 mm <sup>2</sup> | INSULATION DIA<br>被覆外径 | 1.1~1.9 mm |
|-----------------------|---|------------------------|------------|

GENERAL TOLERANCE  
一般公差

10 ≥ : ±0.2  
30 ≥ > 10: ±0.25  
100 ≥ > 30: ±0.3  
ANGLES: ±3°

DIMENSIONS:  
単位: 耗  
mm

DWN TSUKAKOSHI 26MAY1980

MATERIAL 材料 表参照 SEE TABLE

FINISH 仕上 表参照 SEE TABLE

CHK N.ONOUE 30MAY1980

APVD 30MAY1980



TE Connectivity

PRODUCT SPEC 製品規格

NAME 名称 EI シリーズ コネクタ ピンコンタクト (AWG#20-#26)  
PIN CONTACT, AWG 20-26

APPLICATION SPEC 取付適用規格

EI SERIES CONNECTOR

WEIGHT

|      |           |                  |               |
|------|-----------|------------------|---------------|
| SIZE | CAGE CODE | DRAWING NO<br>番号 | RESTRICTED TO |
| A4   | 00779     | 170376           |               |

CUSTOMER DRAWING

SCALE 尺度 4:1 SHEET 1 OF 1 REV C2

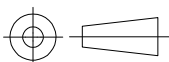
RELEASED FOR PUBLICATION MAY 1, 1980.

THIS DRAWING IS UNPUBLISHED.

ALL RIGHTS RESERVED.

© COPYRIGHT 1980 By -

|        |     |
|--------|-----|
| 0 PLC  | ± - |
| 1 PLC  | ± - |
| 2 PLC  | ± - |
| 3 PLC  | ± - |
| 4 PLC  | ± - |
| ANGLES | ± - |



# Mouser Electronics

Authorized Distributor

Click to View Pricing, Inventory, Delivery & Lifecycle Information:

[TE Connectivity:](#)

[170376-1](#)